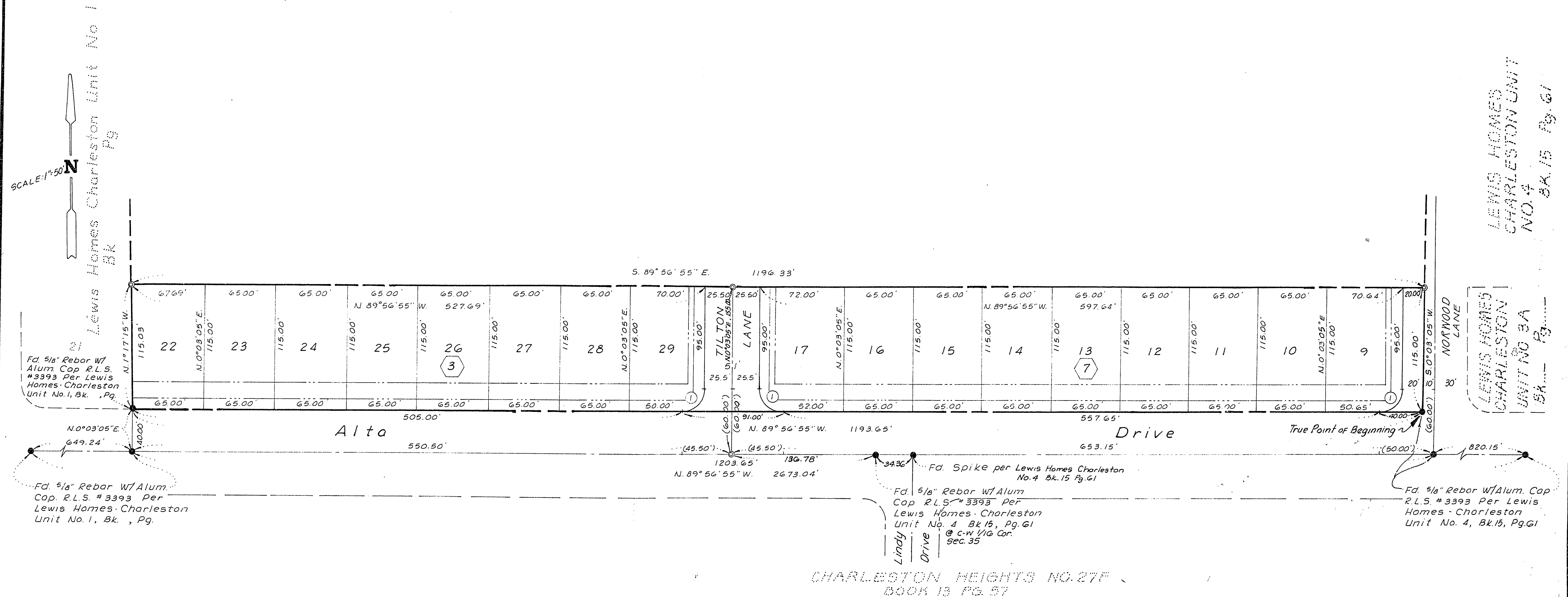


LEWIS HOMES – CHARLESTON UNIT NO. 3

BEING A SUBDIVISION WITHIN A PORTION OF
THE N.W. 1/4 OF SEC. 35, T.20S., R.60E., M.D.M.
CITY OF LAS VEGAS, CLARK COUNTY, NEVADA



Fd. 5/8" Rebar w/ Alum. Cap. R.L.S. #3393 Per Lewis Homes - Charleston Unit No. 1, Bk. , Pg.

Fd. 5/8" Rebar w/ Alum. Cap. R.L.S. #3393 Per Lewis Homes - Charleston Unit No. 1, Bk. , Pg.

Fd. Spike per Lewis Homes Charleston No. 4 Bk. 15 Pg. 61

Fd. 5/8" Rebar w/ Alum. Cap. R.L.S. #3393 Per Lewis Homes - Charleston Unit No. 4, Bk. 15, Pg. 61 @ c-w 1/16 Cor. Sec. 35

Fd. 5/8" Rebar w/ Alum. Cap. R.L.S. #3393 Per Lewis Homes - Charleston Unit No. 4, Bk. 15, Pg. 61

Curve Data					
No.	Δ	R	T	C	L
①	90°00'00"	20.00'	20.00'	28.28'	31.42'

Legend

- Point Found As Shown
- ⊙ Set 5/8" Rebar w/ Alum. Cap. Stamped R.L.S. #3393
- 7 Lot Number
- (NB) Block Number
- Bldg. Setback Line
25' Front Yard, 15' Side Yard
Abutting R/W
- 5' Utility Easement In Back Of
And Abutting All R/W Lines (SHOWN NOT TO SCALE)
- ① Curve Data Number

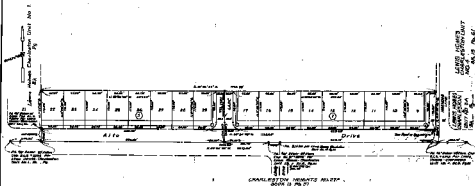
Note

3' Utility Easement On Each Side Of Each Side Lot Line Not Abutting R/W.

FOR REFERENCE ONLY

LEWIS HOMES - CHARLESTON UNIT NO. 3

BEING A SUBDIVISION WITHIN A PORTION OF
THE N.W. 1/4 OF SEC. 36, T.20S., R.60E., N.D.M.
CITY OF LAS VEGAS, CLARK COUNTY, NEVADA



Cement Date					
1	2	3	4	5	6
10/10/57	10/10/57	10/10/57	10/10/57	10/10/57	10/10/57

Legend

1. Point of view of Street
2. Lot No. Point of view of Street
3. Lot Number
4. Area Under
5. Area of view of Street
6. Point of view of Street
7. Point of view of Street
8. Point of view of Street
9. Point of view of Street
10. Point of view of Street

Notes

1. Utility easement to Lot 22 of
Map No. 100-100-100-100-100