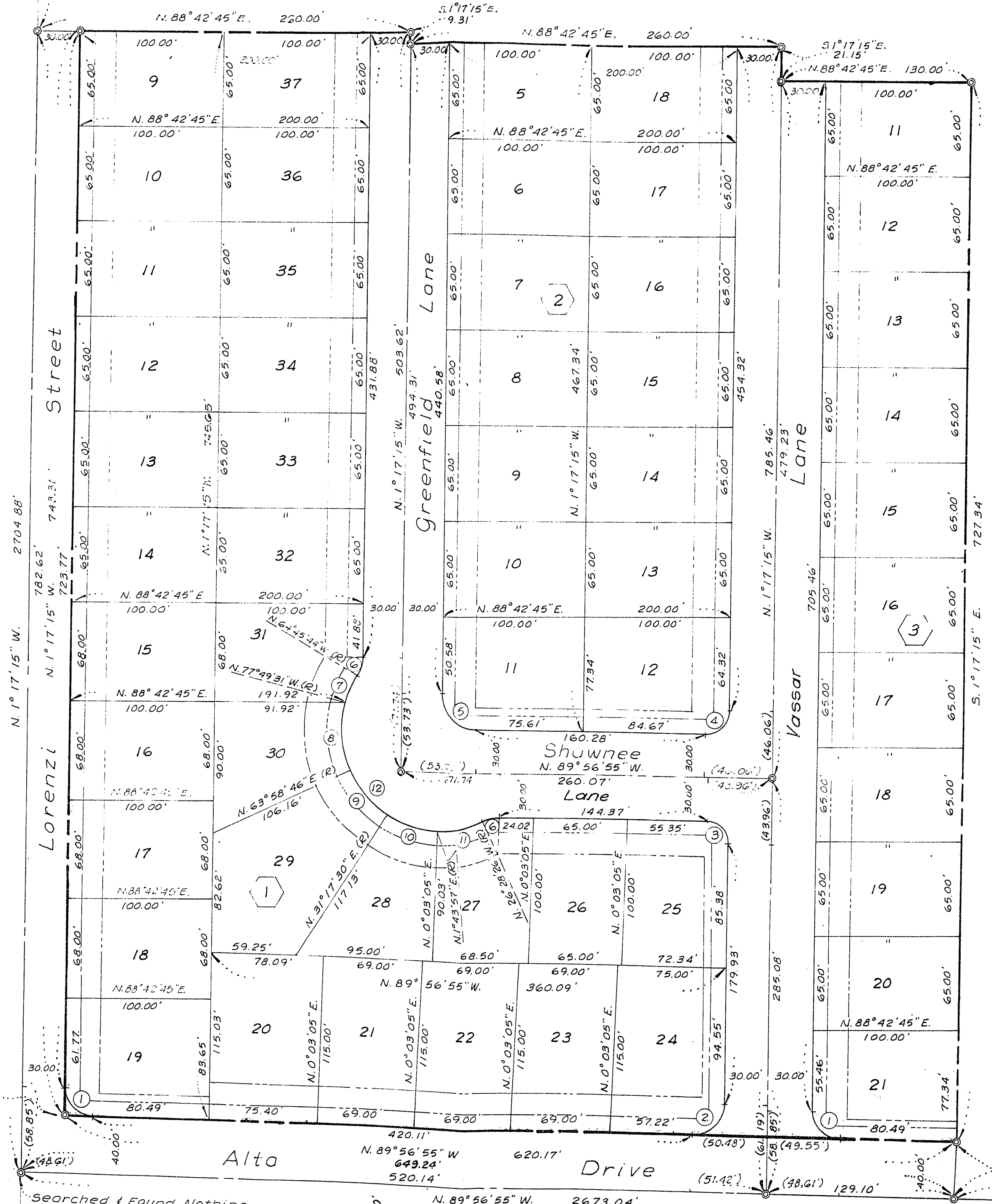
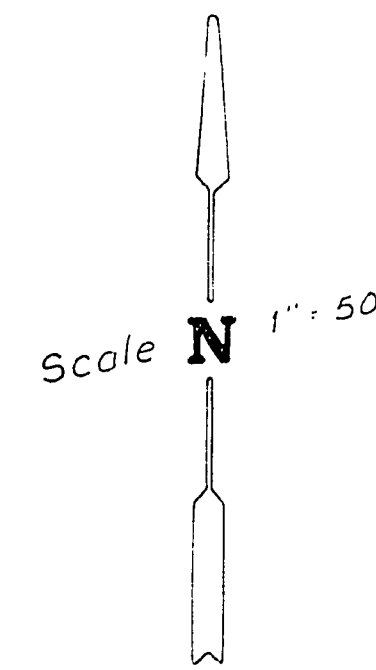


LEWIS HOMES - CHARLESTON UNIT NO. 1

BEING A SUBDIVISION WITHIN A PORTION OF
THE N.W. 1/4 OF SEC. 35, T.20S., R.60E., M.D.M.
CITY OF LAS VEGAS, CLARK COUNTY, NEVADA

Set 5/8" Rebar w/ Alum. Cap. @
1/4 Cor. Sec. 35, from
C.L.V. & State Hwy. ties



Curve Data					
No.	Δ	R	T	C	L
①	88°39'40"	20.00'	19.54'	27.95'	30.95'
②	91°20'20"	20.00'	20.47'	28.61'	31.88'
③	88°39'40"	15.00'	14.65'	20.96'	23.21'
④	91°20'20"	15.00'	15.35'	21.46'	23.91'
⑤	88°39'40"	25.00'	24.42'	34.94'	38.69'
⑥	26°31'31"	25.00'	5.89'	11.47'	11.57'
⑦	13°03'47"	70.00'	8.01'	15.93'	15.96'
⑧	38°11'43"	70.00'	24.24'	45.81'	46.66'
⑨	32°41'16"	70.00'	20.53'	39.40'	39.94'
⑩	29°33'33"	70.00'	18.47'	35.71'	36.11'
⑪	28°12'23"	70.00'	17.59'	34.11'	34.46'
⑫	141°42'42"	70.00'	201.65'	132.26'	173.13'

Legend

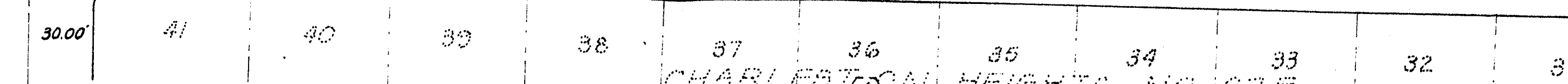
- Point Found As Shown
- ⊙ Set 5/8" Rebar w/ Alum. Cap Stamped R.L.S. 3393
- 5 Lot Number
- ② Block Number
- Bldg Setback Line
- 25' Front Yard, 15' Side Yard Abutting R/W
- 10' Utility Easement In Back Of And Abutting All R/W Lines
- Ⓢ Curve Data Number

Notes

3' Utility Easement On Each Side Of Each Side Lot Line Not Abutting R/W.

Searched & Found Nothing. Set 5/8" Rebar w/ Alum. Cap. @ 1/4 Cor. Sec. 35, R.L.S. 3393 by intersection and ties checked

Found Nail & Mutilated Tag @ C 1/4 Cor. Sec. 35, Set 5/8" Rebar w/ Alum. Cap. R.L.S. 3393, and ties checked



CHARLESTON HEIGHTS NO. 127F BK 13 PG 57

FOR REFERENCE ONLY

02/07/2021

