

JADE PARK UNIT NO. 6

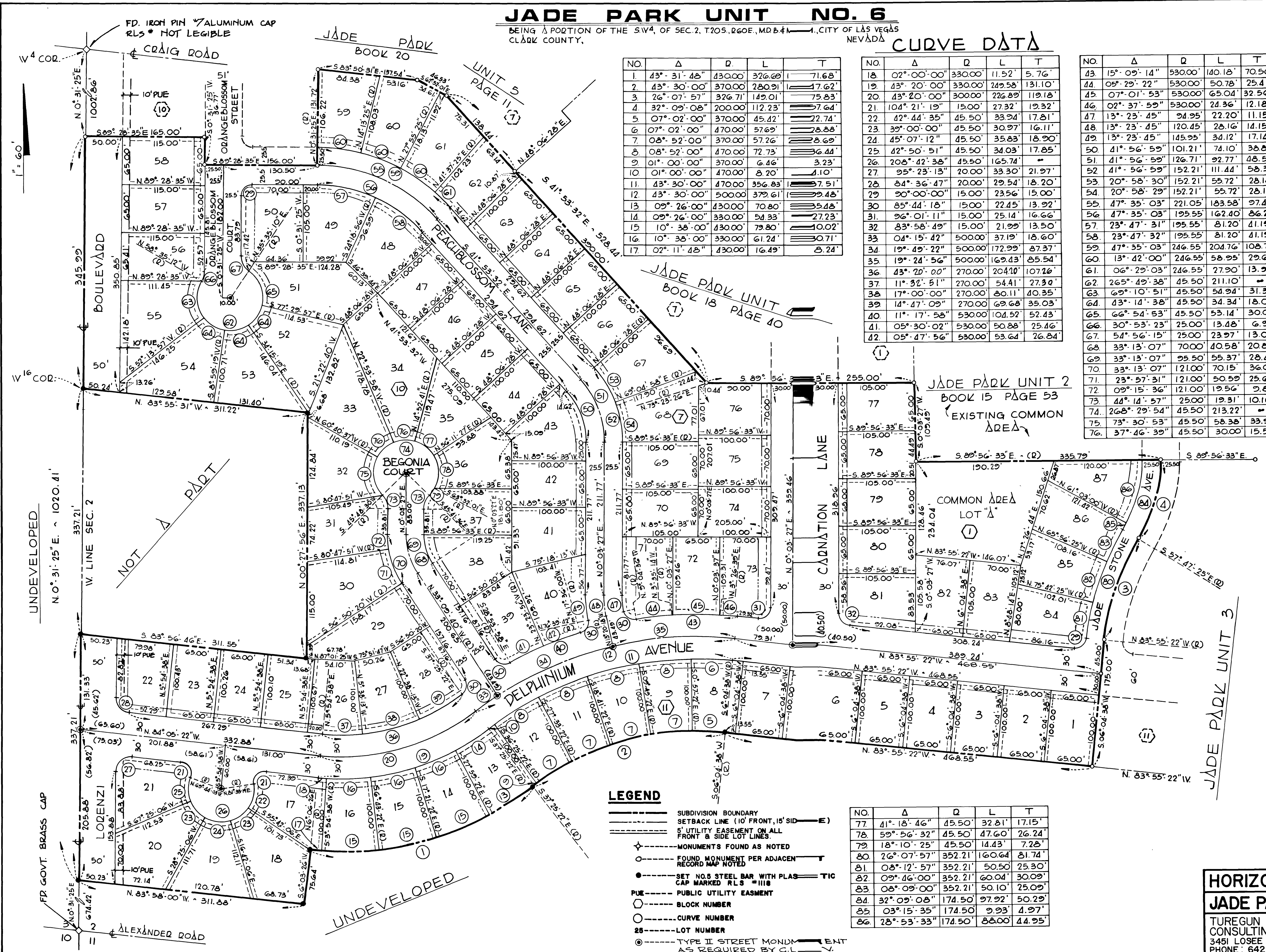
BEING A PORTION OF THE SW4, OF SEC. 2, T20S, R60E, MDB41, CITY OF LAS VEGAS, CLARK COUNTY, NEVADA

CURVE DATA

NO.	Δ	R	L	T
1	43° 31' 48"	430.00	326.68	71.68'
2	43° 30' 00"	370.00	280.91	47.62'
3	26° 07' 57"	376.71	149.01	75.83'
4	32° 09' 08"	200.00	112.23	7.64'
5	07° 02' 00"	370.00	45.42	22.74'
6	07° 02' 00"	470.00	57.69	28.88'
7	08° 52' 00"	370.00	57.26	8.69'
8	08° 52' 00"	470.00	72.73	36.44'
9	01° 00' 00"	370.00	6.46	3.23'
10	01° 00' 00"	470.00	8.20	4.10'
11	43° 30' 00"	470.00	356.83	71.51'
12	43° 30' 00"	500.00	379.61	99.48'
13	09° 26' 00"	430.00	70.80	5.48'
14	09° 26' 00"	330.00	54.33	27.23'
15	10° 38' 00"	430.00	79.80	10.02'
16	10° 38' 00"	330.00	61.24	30.71'
17	02° 11' 48"	430.00	16.49	8.24'

NO.	Δ	R	L	T
18	02° 00' 00"	330.00	11.52	5.76'
19	43° 20' 00"	330.00	249.58	131.10'
20	43° 20' 00"	300.00	226.89	119.18'
21	104° 21' 19"	15.00	27.32	19.32'
22	42° 44' 35"	45.50	33.94	17.81'
23	39° 00' 00"	45.50	30.97	16.11'
24	45° 07' 12"	45.50	35.83	18.90'
25	42° 50' 51"	45.50	34.03	17.85'
26	208° 42' 38"	45.50	165.74	-
27	95° 23' 13"	20.00	33.30	21.97'
28	84° 36' 47"	20.00	29.54	18.20'
29	20° 00' 00"	15.00	23.56	15.00'
30	85° 44' 18"	15.00	22.45	13.92'
31	96° 01' 11"	15.00	25.14	16.66'
32	83° 58' 49"	15.00	21.99	13.50'
33	04° 15' 42"	500.00	37.19	18.60'
34	19° 49' 22"	500.00	172.99	87.37'
35	19° 24' 56"	500.00	169.43	85.54'
36	43° 20' 00"	270.00	204.10	107.26'
37	11° 32' 51"	270.00	54.41	27.30'
38	17° 00' 00"	270.00	80.11	40.35'
39	14° 47' 09"	270.00	69.68	35.03'
40	11° 17' 58"	530.00	104.92	52.43'
41	05° 30' 02"	530.00	50.88	25.46'
42	05° 47' 56"	530.00	53.64	26.84'

NO.	Δ	R	L	T
43	15° 09' 14"	530.00	140.18	70.50'
44	08° 29' 22"	530.00	50.78	25.41'
45	07° 01' 53"	530.00	65.04	32.56'
46	02° 37' 59"	530.00	24.36	12.18'
47	13° 23' 45"	94.95	22.20	11.15'
48	13° 23' 45"	120.45	28.16	14.15'
49	13° 23' 45"	145.95	34.12	17.14'
50	41° 56' 59"	101.21	74.10	38.80'
51	41° 56' 59"	126.71	92.77	48.58'
52	41° 56' 59"	152.21	111.44	58.35'
53	20° 58' 30"	152.21	55.72	28.18'
54	20° 58' 29"	152.21	55.72	28.18'
55	47° 35' 03"	221.05	183.58	97.46'
56	47° 35' 03"	195.55	162.40	86.21'
57	23° 47' 31"	195.55	81.20	41.19'
58	23° 47' 32"	195.55	81.20	41.19'
59	47° 35' 03"	246.55	204.76	108.70'
60	13° 42' 00"	246.55	58.95	29.62'
61	06° 29' 03"	246.55	27.90	13.97'
62	265° 49' 38"	45.50	211.10	-
63	69° 10' 51"	45.50	54.94	31.38'
64	43° 14' 38"	45.50	34.34	18.03'
65	66° 54' 53"	45.50	53.14	30.06'
66	30° 53' 23"	25.00	13.48	6.91'
67	54° 56' 15"	25.00	23.97	13.00'
68	33° 13' 07"	70.00	40.58	20.88'
69	33° 13' 07"	95.50	55.37	28.49'
70	33° 13' 07"	121.00	70.15	36.09'
71	23° 57' 31"	121.00	50.59	25.67'
72	09° 15' 36"	121.00	19.56	9.60'
73	44° 14' 57"	25.00	19.31	10.16'
74	268° 29' 54"	45.50	213.22	-
75	73° 30' 53"	45.50	58.38	33.99'
76	37° 46' 39"	45.50	30.00	15.57'



- LEGEND**
- SUBDIVISION BOUNDARY
 - SETBACK LINE (10' FRONT, 15' SID)
 - 5' UTILITY EASEMENT ON ALL FRONT & SIDE LOT LINES
 - MONUMENTS FOUND AS NOTED
 - FOUND MONUMENT PER ADJACENT RECORD MAP NOTED
 - SET NO. 8 STEEL BAR WITH PLAS. TIC CAP MARKED RL 8 #118
 - PUBLIC UTILITY EASEMENT
 - BLOCK NUMBER
 - CURVE NUMBER
 - 25 --- LOT NUMBER
 - TYPE II STREET MONUMENT AS REQUIRED BY C.I.L.

NO.	Δ	R	L	T
77	41° 18' 46"	45.50	32.81	17.15'
78	59° 56' 32"	45.50	47.60	26.24'
79	18° 10' 25"	45.50	14.43	7.28'
80	26° 07' 57"	352.21	160.64	81.74'
81	08° 12' 57"	352.21	50.50	25.30'
82	09° 46' 00"	352.21	60.04	30.09'
83	08° 09' 00"	352.21	50.10	25.09'
84	32° 09' 08"	174.50	97.92	50.29'
85	03° 15' 35"	174.50	9.93	4.97'
86	28° 53' 33"	174.50	88.00	44.95'

HORIZONTAL CONTROL
JADE PARK UNIT NO. 6
 TUREGUN & ASSOCIATES
 CONSULTING ENGINEERS
 3451 LOSEE ROAD, NORTH LAS VEGAS,
 NEVADA 89030
 PHONE: 642-2676

SHEET
3/12

4195

16-7-31

107Y-1861-6

