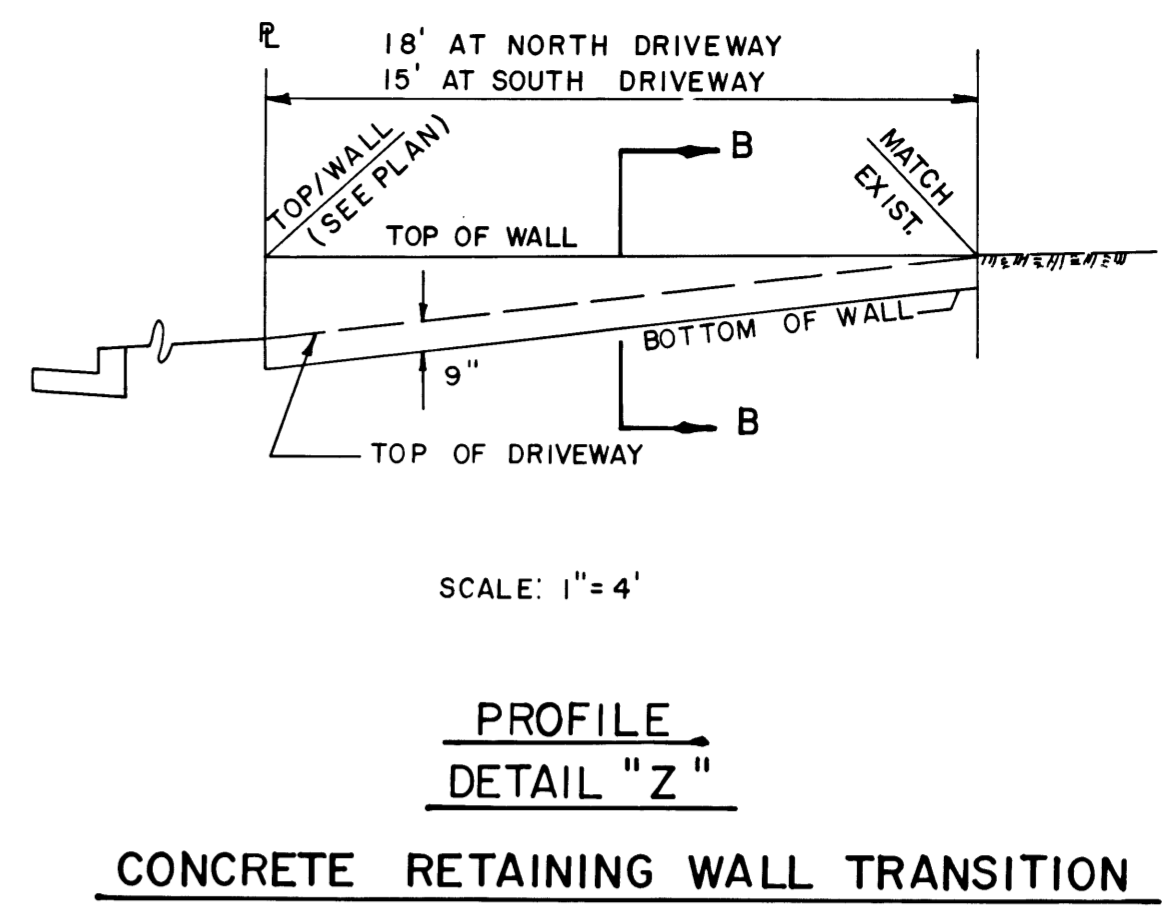
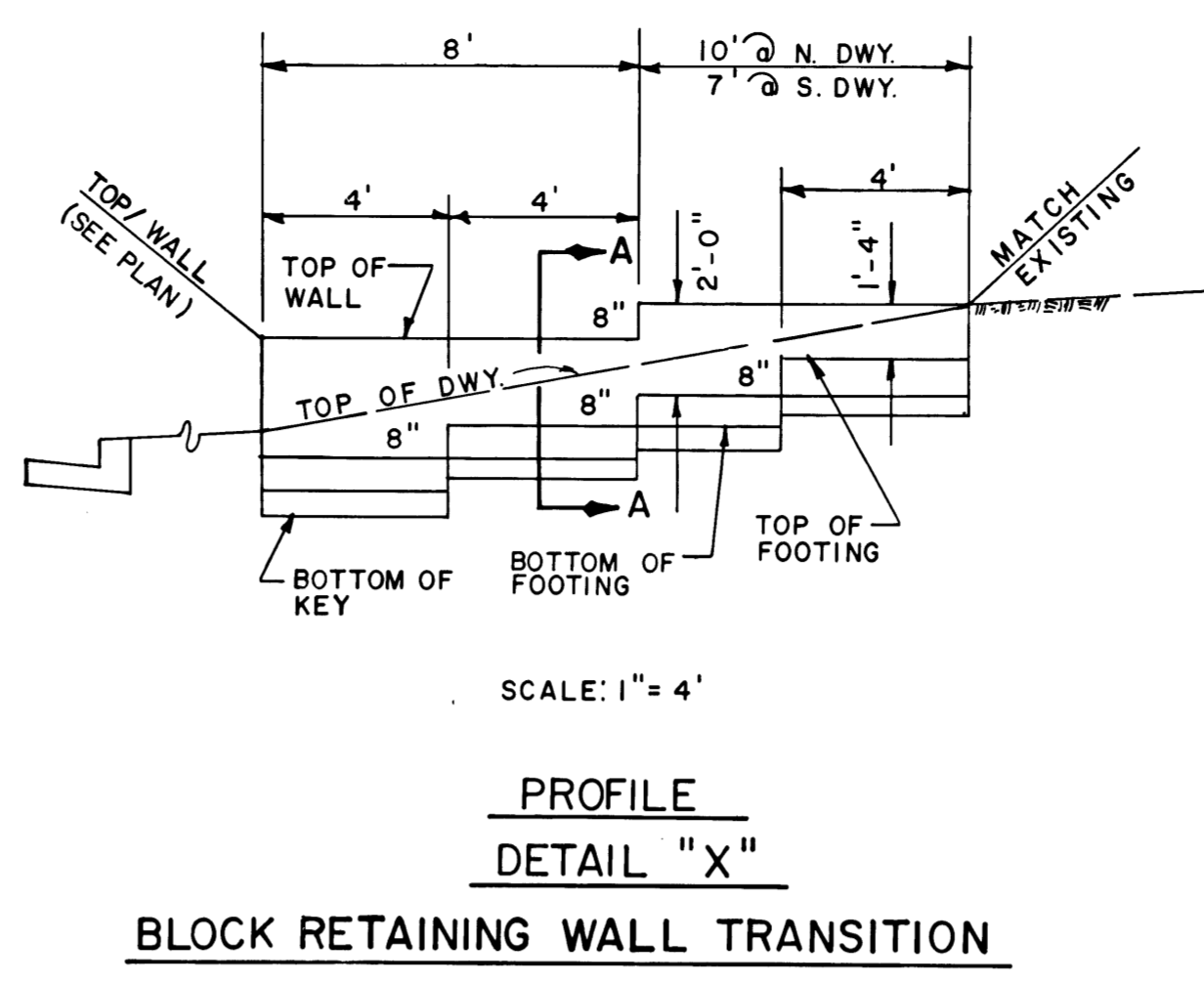
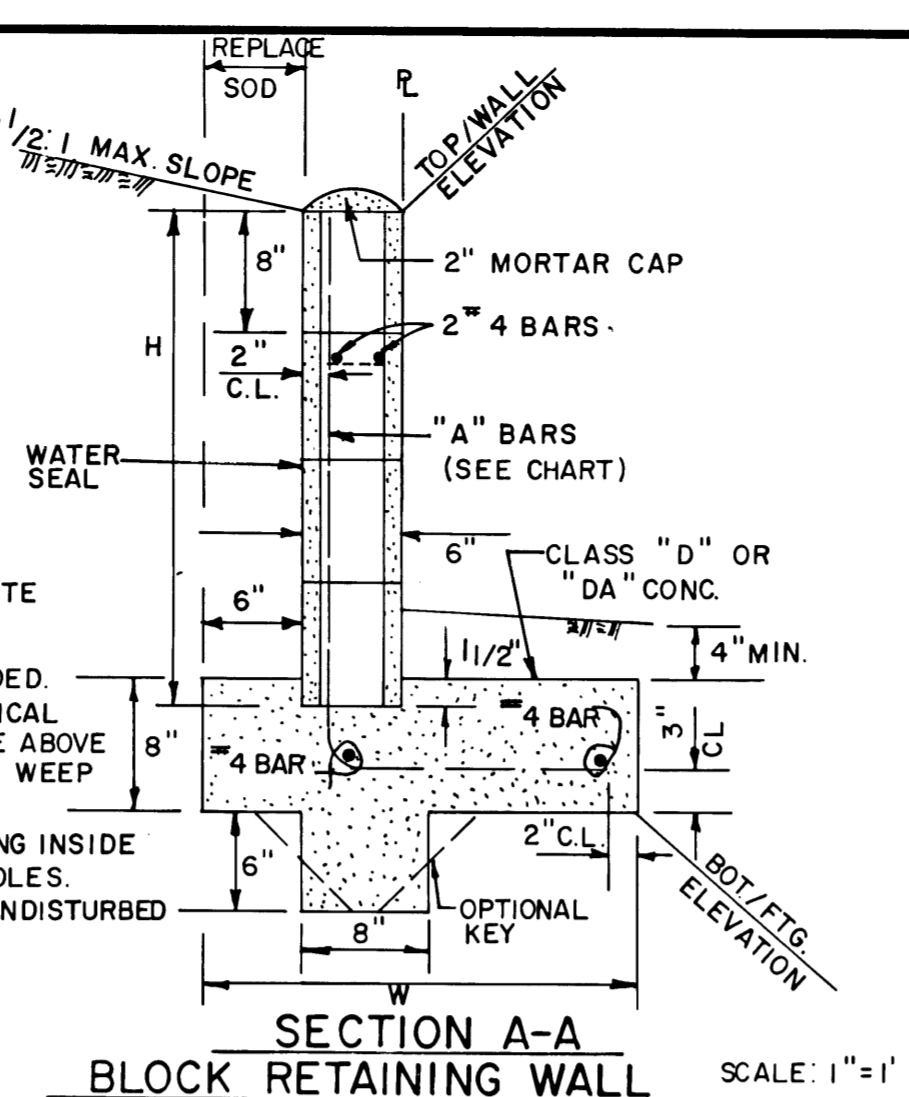


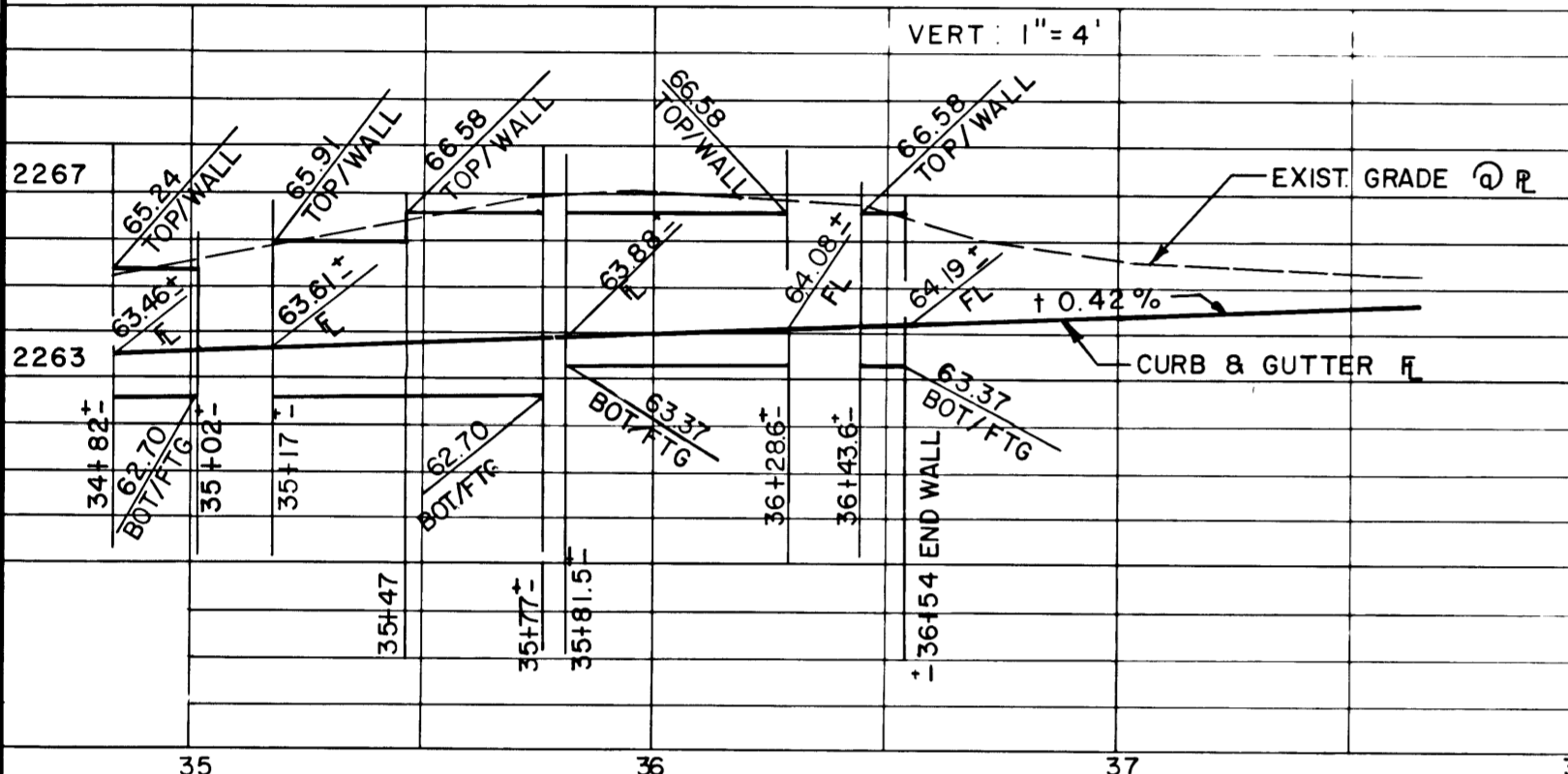
WALL DATA		
H	W	"A" BARS
1'-4"	12"	
2'-0"	1'-6"	3 @ 24"
2'-8"	2'-3"	3 @ 24"
3'-4"	2'-8"	3 @ 24"

- NOTES:
- 1) USE 6" X 8" X 16" CONCRETE BLOCKS
  - 2) ALL CELLS TO BE FILLED SOLID WITH GROUT & RODDED.
  - 3) OMIT MORTAR FROM VERTICAL JOINTS IN FIRST COURSE ABOVE F.G. ON 32" CENTERS FOR WEEP HOLES.
  - 4) PLACE WATER SEAL ALONG INSIDE FACE EXCEPT @ WEEP HOLES.
  - 5) POUR FOOTING AGAINST UNDISTURBED NATURAL SOIL.



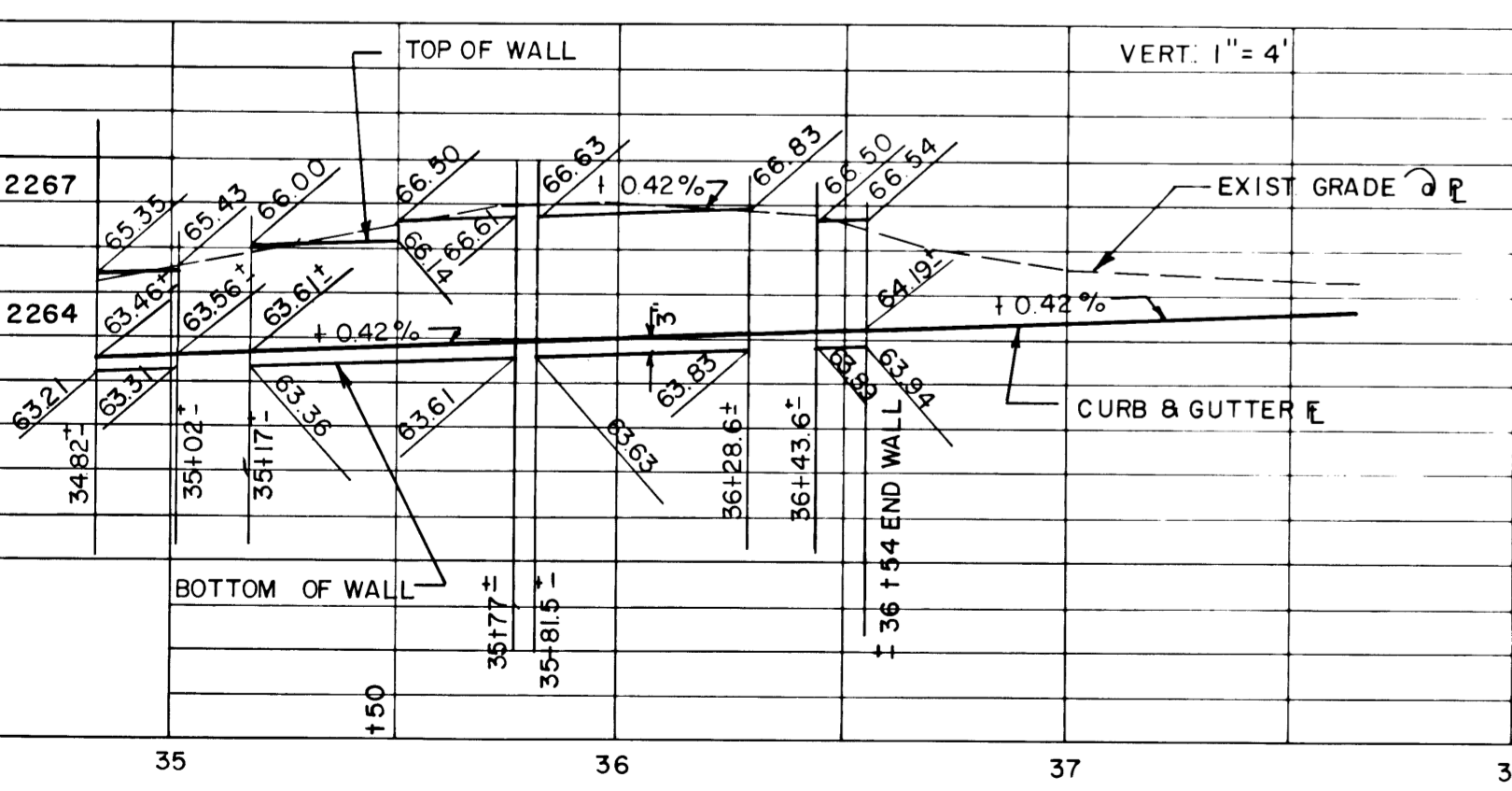
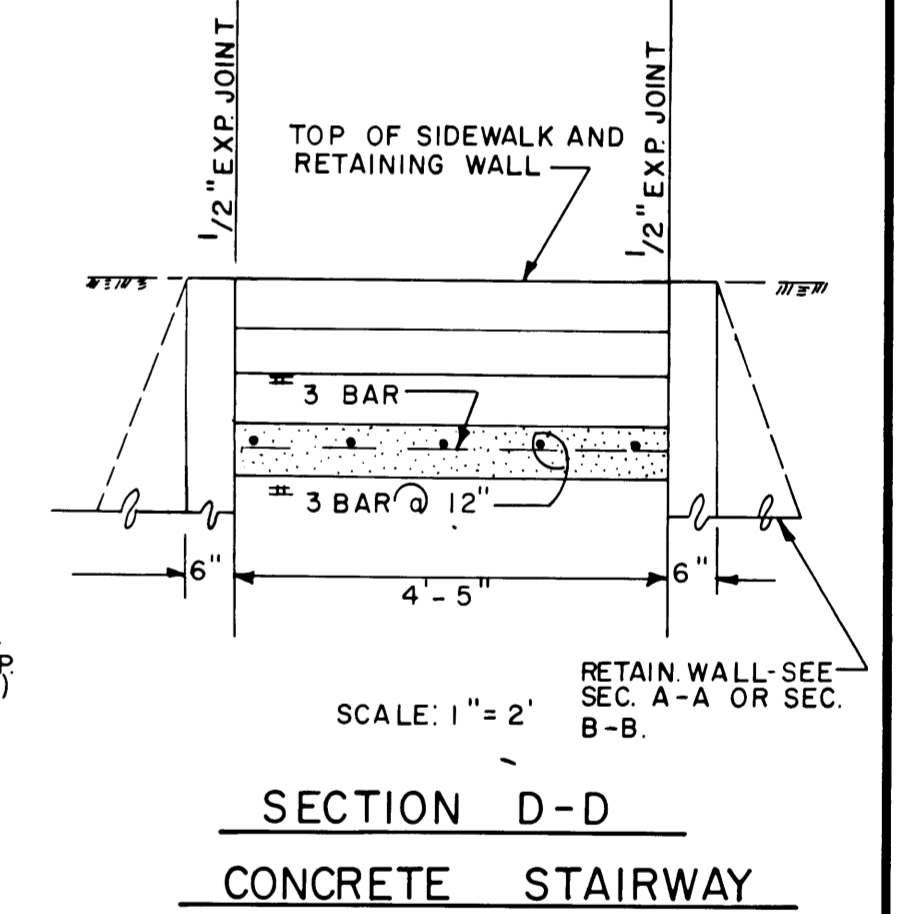
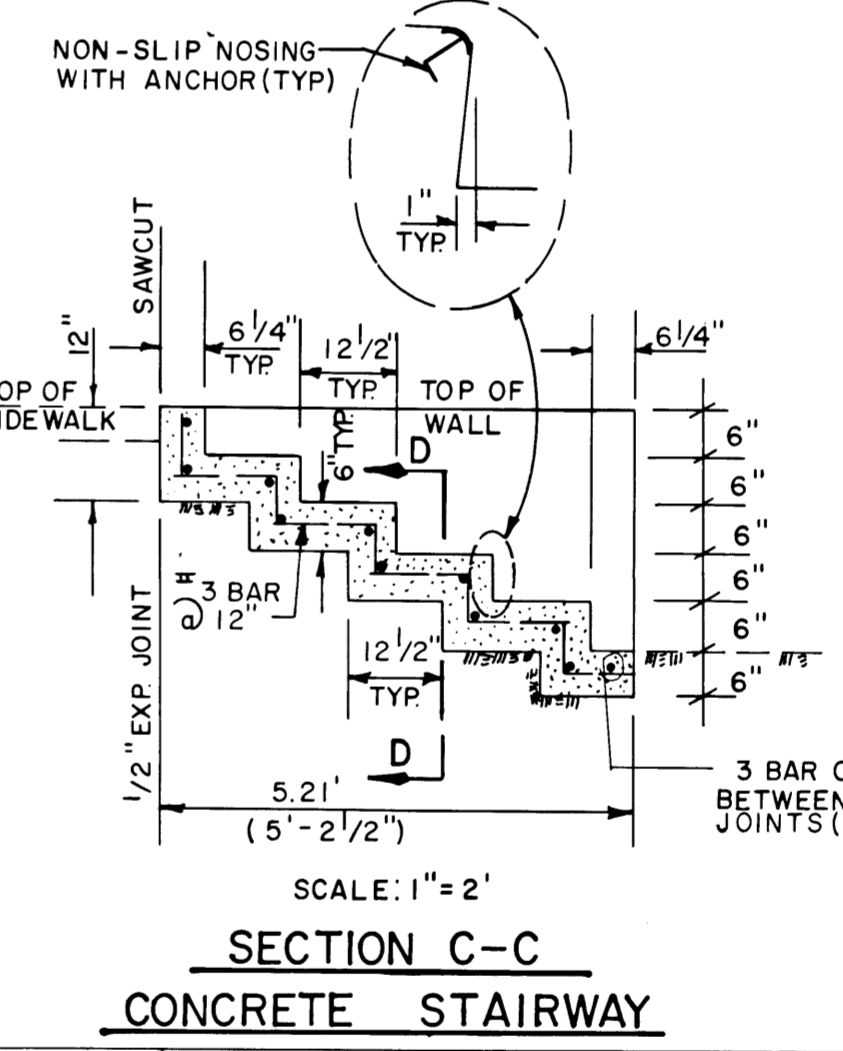
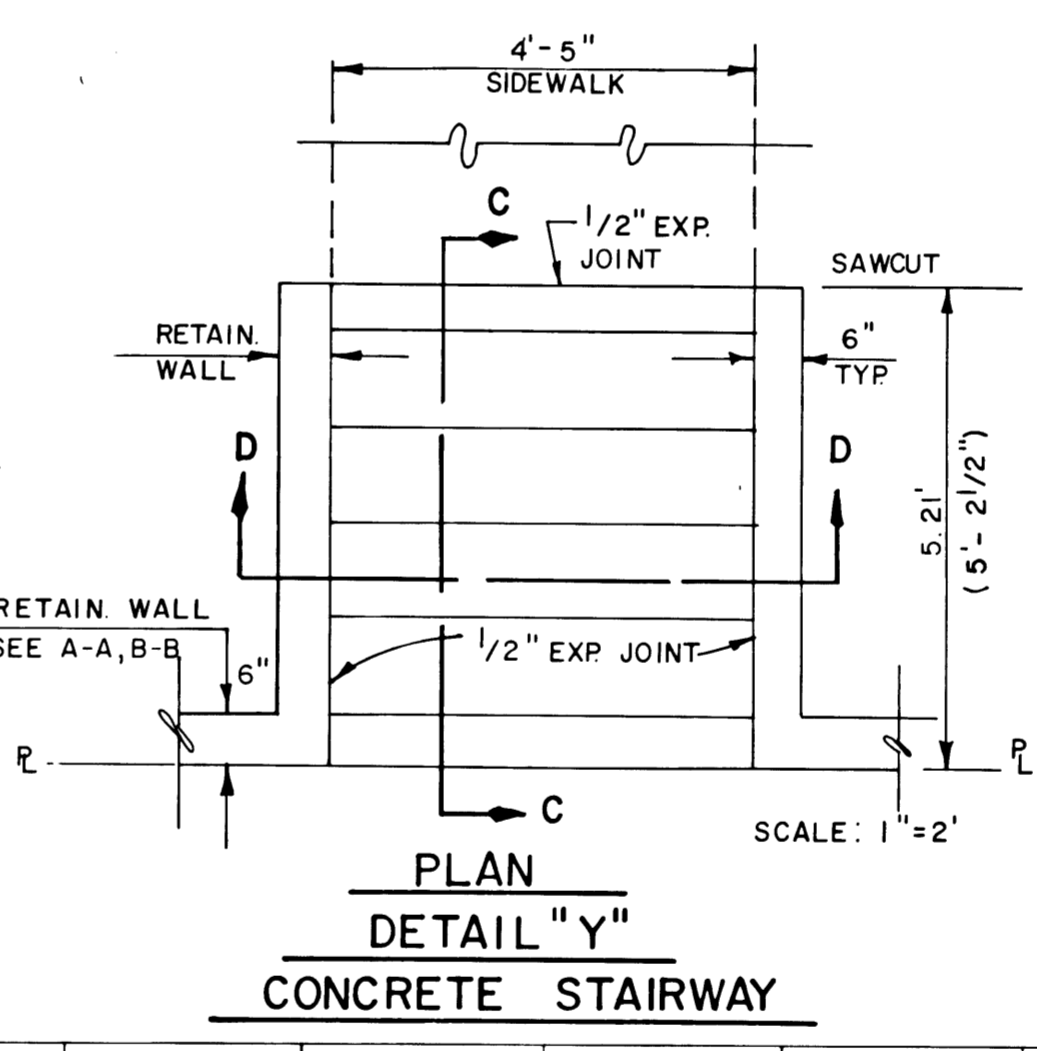
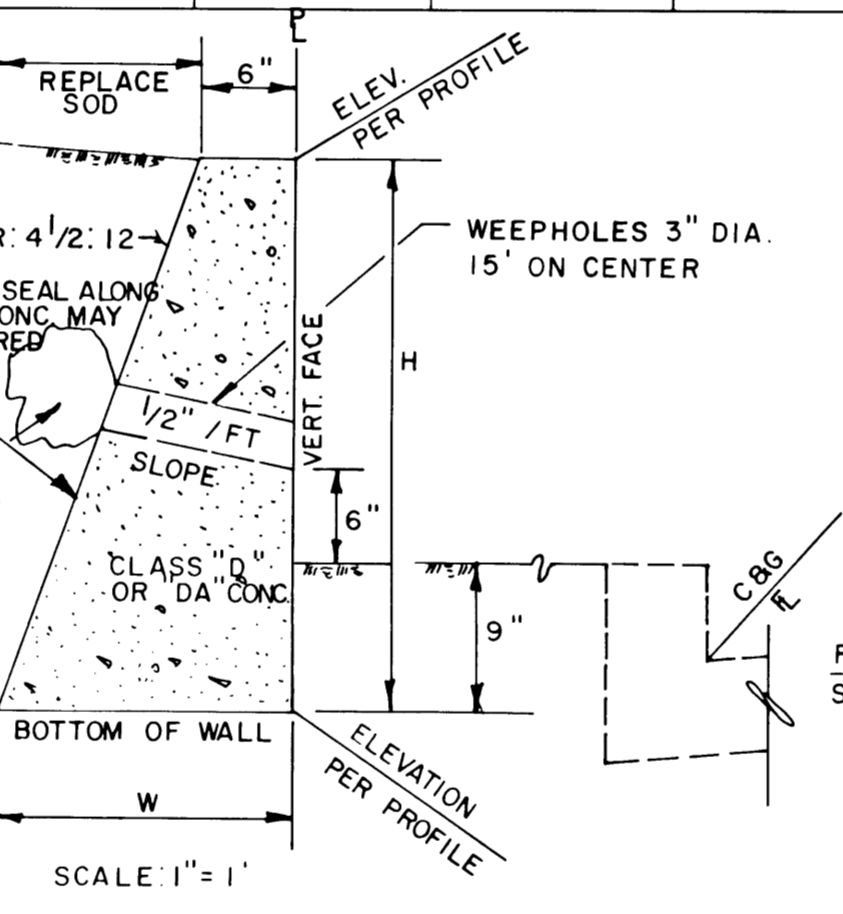
LEGEND

- OLEANDERS
- MULBERRY
- OLIVE
- PINE
- ASH
- ROSE
- HEDGE
- CYPRESS
- SPRINKLER



DATA	
H	W
0.75	0.78
1.0	0.88
1.5	1.06
2.0	1.25
2.14	1.30
2.60	1.48
2.64	1.49
3.0	1.63

- NOTE: PLACE 1/2" PERVIOUS BACKFILL MATERIAL IN A BURLAP SACK SECURELY TIED



REV. NO.	DATE	DESCRIPTION	APPROVED

DESIGNED BY: R MENDENHALL  
 DRAWN BY: S LILLY  
 CHECKED BY: D CEDERBURG

CLARK COUNTY NEVADA  
 DEPARTMENT OF PUBLIC WORKS

JONES BOULEVARD  
 CARTIER AVE. TO RANCHO DR.  
 RETAINING WALL DETAILS

SCALE	HORIZ: AS SHOWN	DRAWING NO.
	VERT: AS SHOWN	L-1215
PROJECT NO.	B810302	
FIELD BOOK		
SHT.	33A OF 53	

27-4-35

