

14-12-142

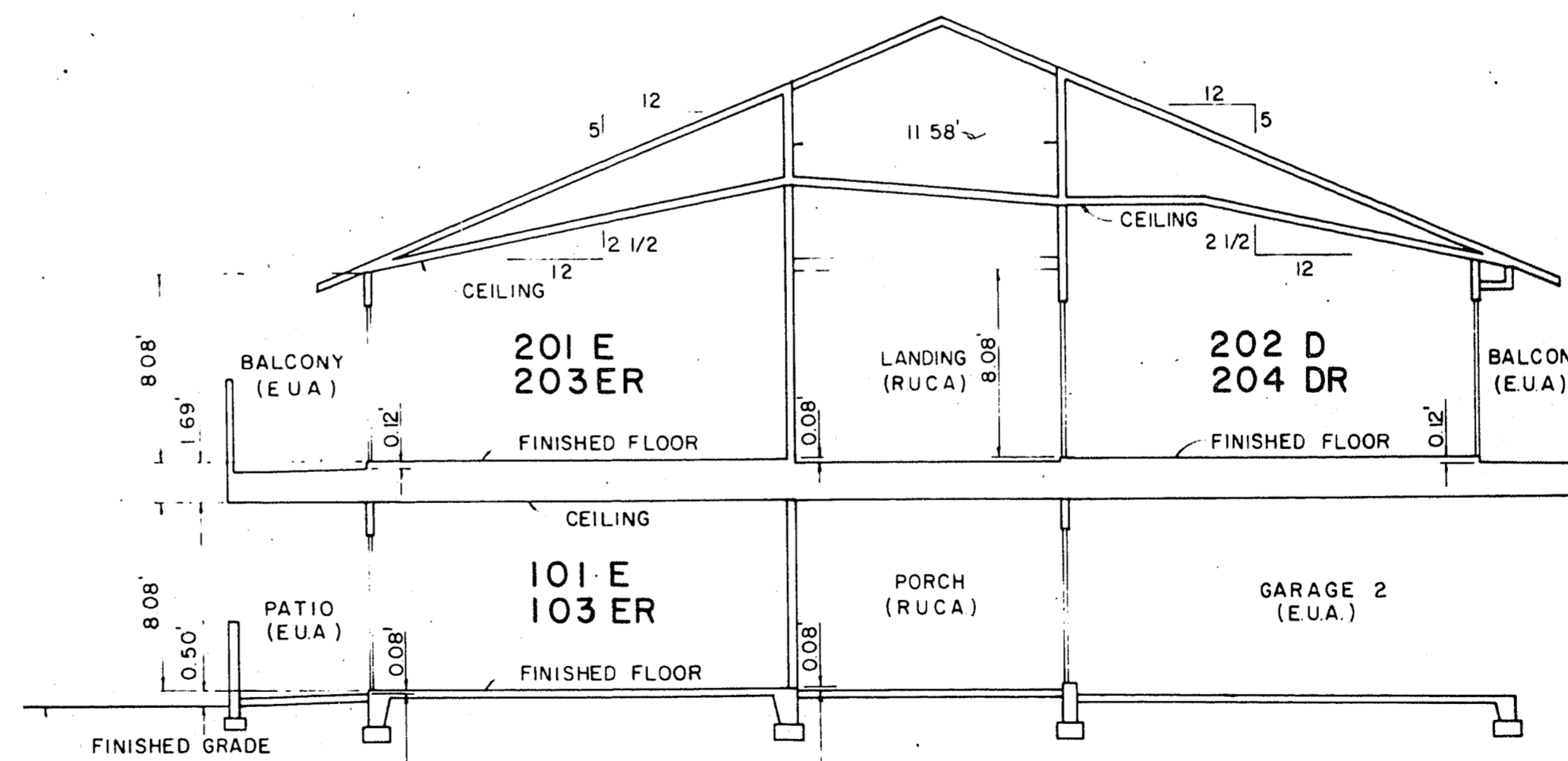
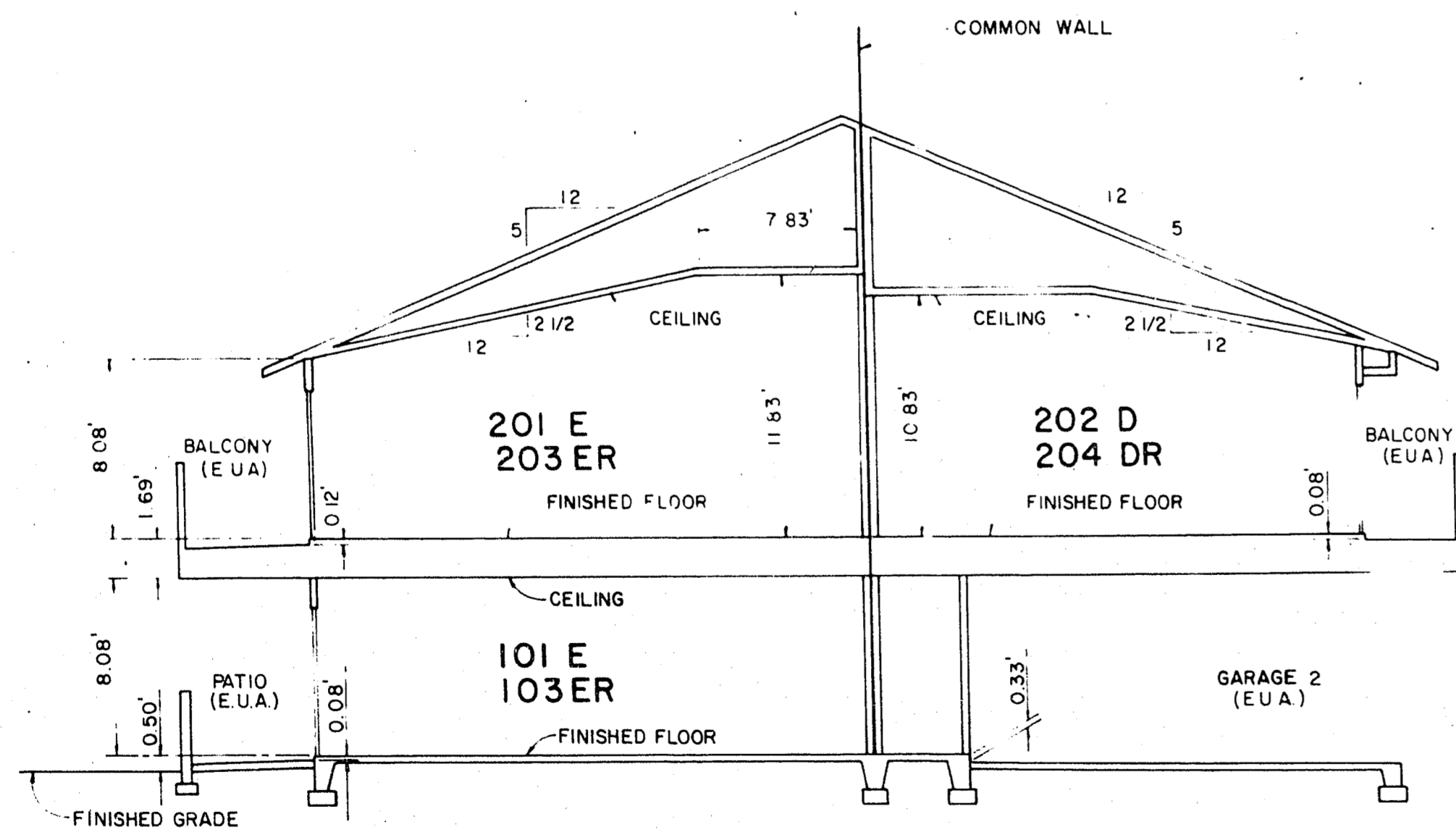
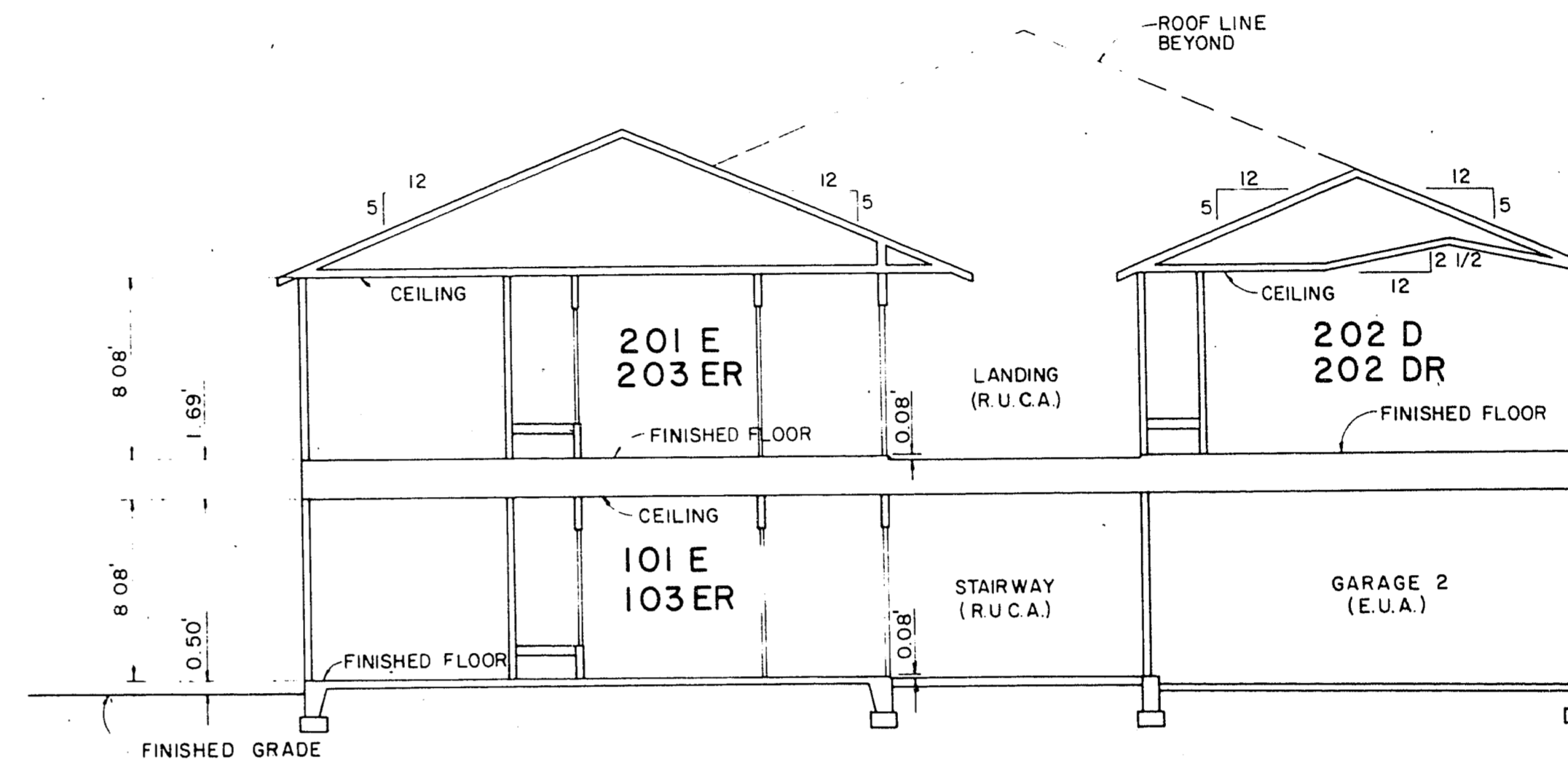
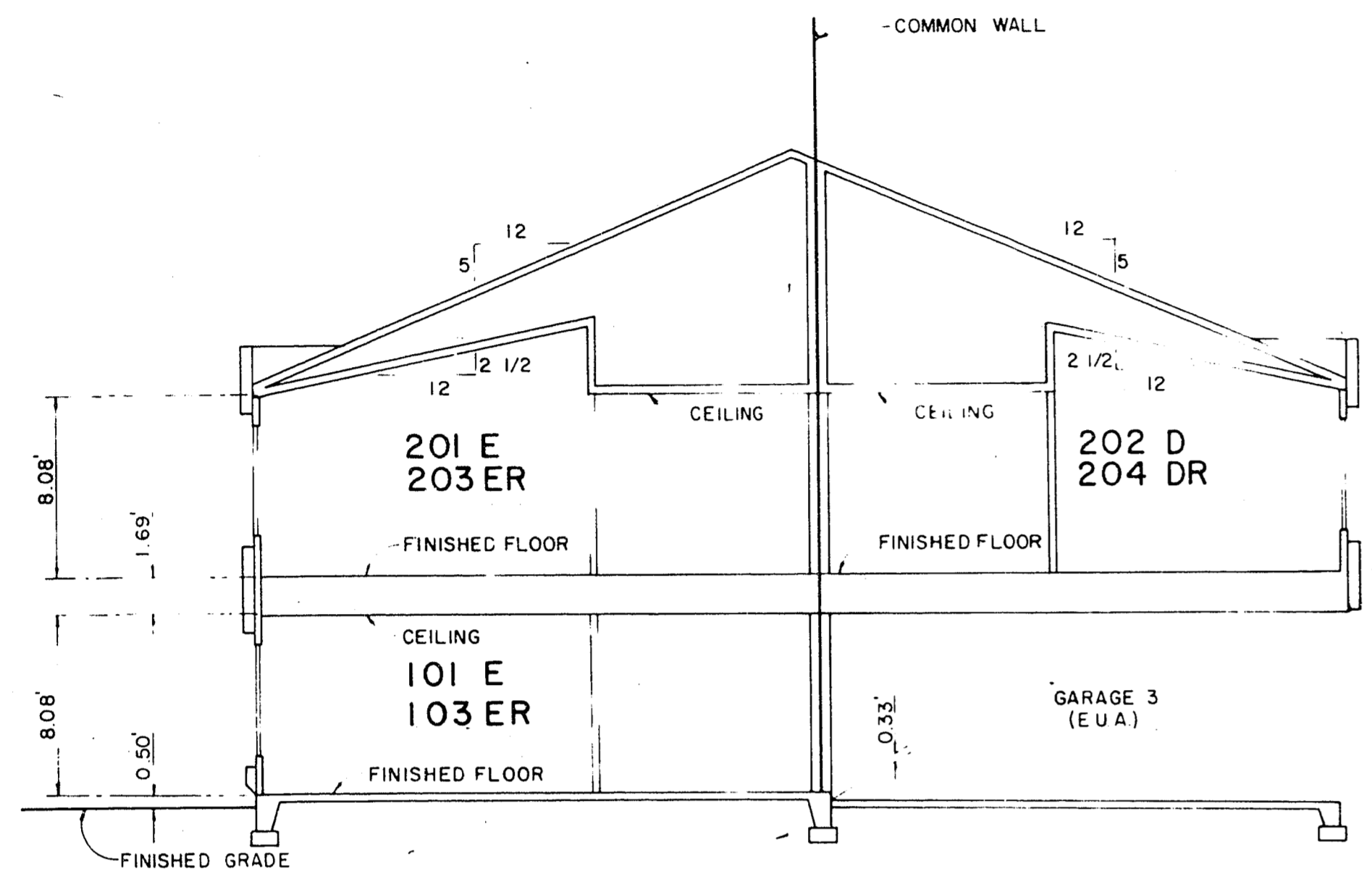
Book 890630

# LAKESIDE CONDOMINIUMS NO. 2

00832

A RESIDENTIAL PLANNED DEVELOPMENT FOR CONDOMINIUM PURPOSES

Situated in the Southwest Quarter (SW 1/4) of Section 8, T.21S., R.60E., M.D.M., City of Las Vegas, Clark County, Nevada  
BEING A SUBDIVISION OF A PORTION OF LOT 1 AS SHOWN BY MAP THEREOF ON FILE IN FILE 47, PAGE 79 OF  
PARCEL MAPS IN THE OFFICE OF THE COUNTY RECORDER, CLARK COUNTY NEVADA.



TYPICAL SECTIONS  
FLOOR PLANS D & E

A-3