

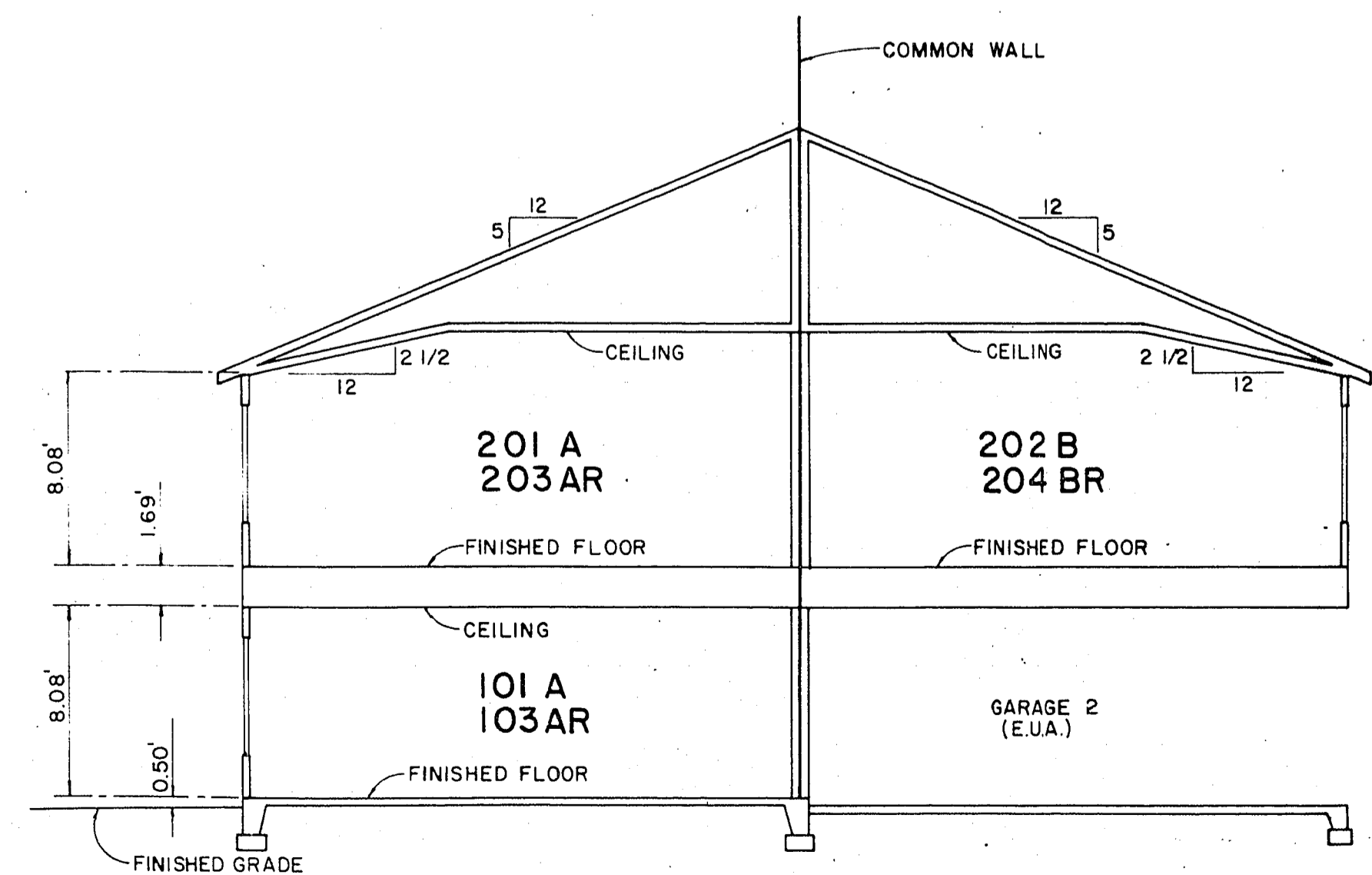
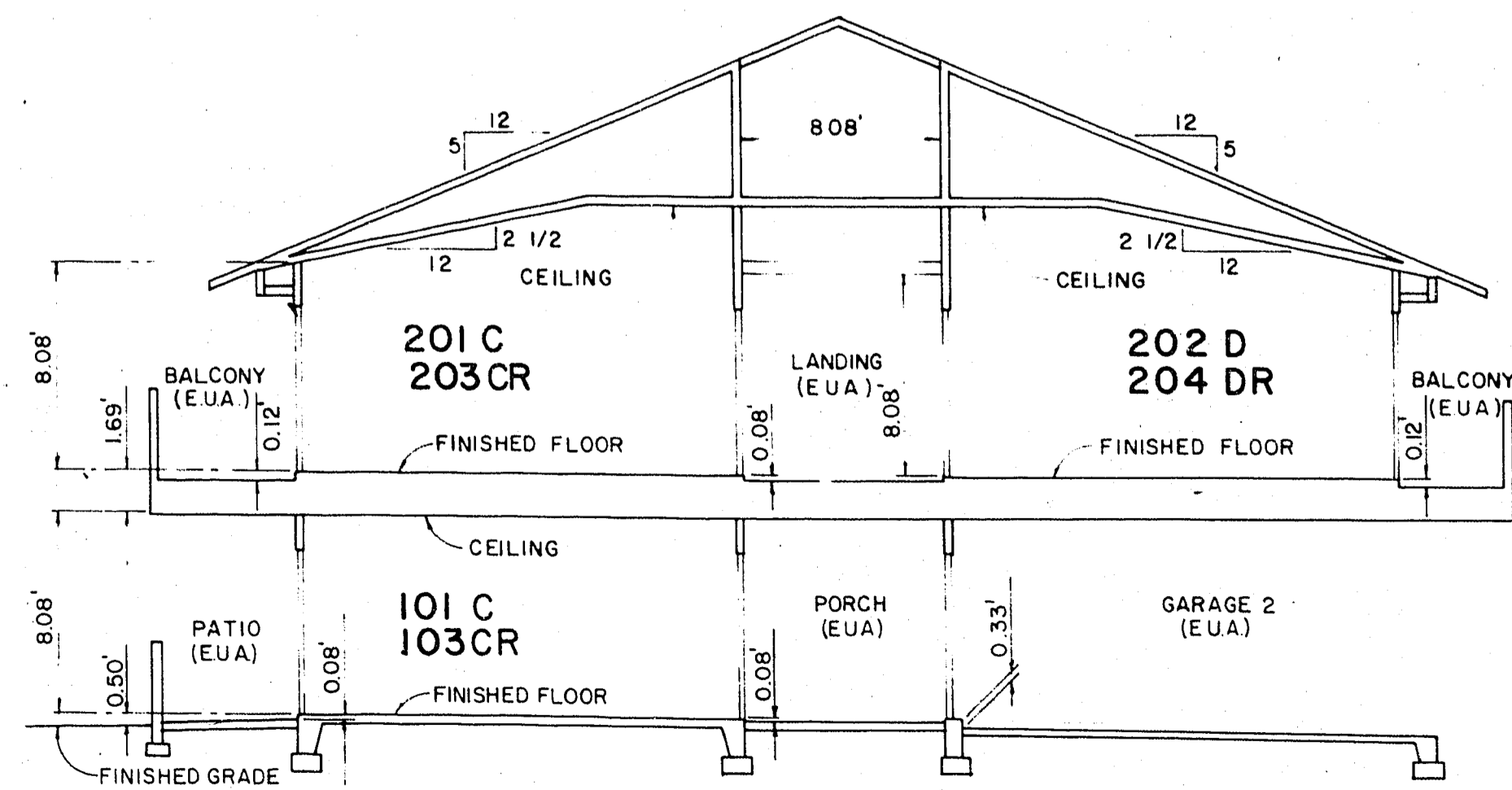
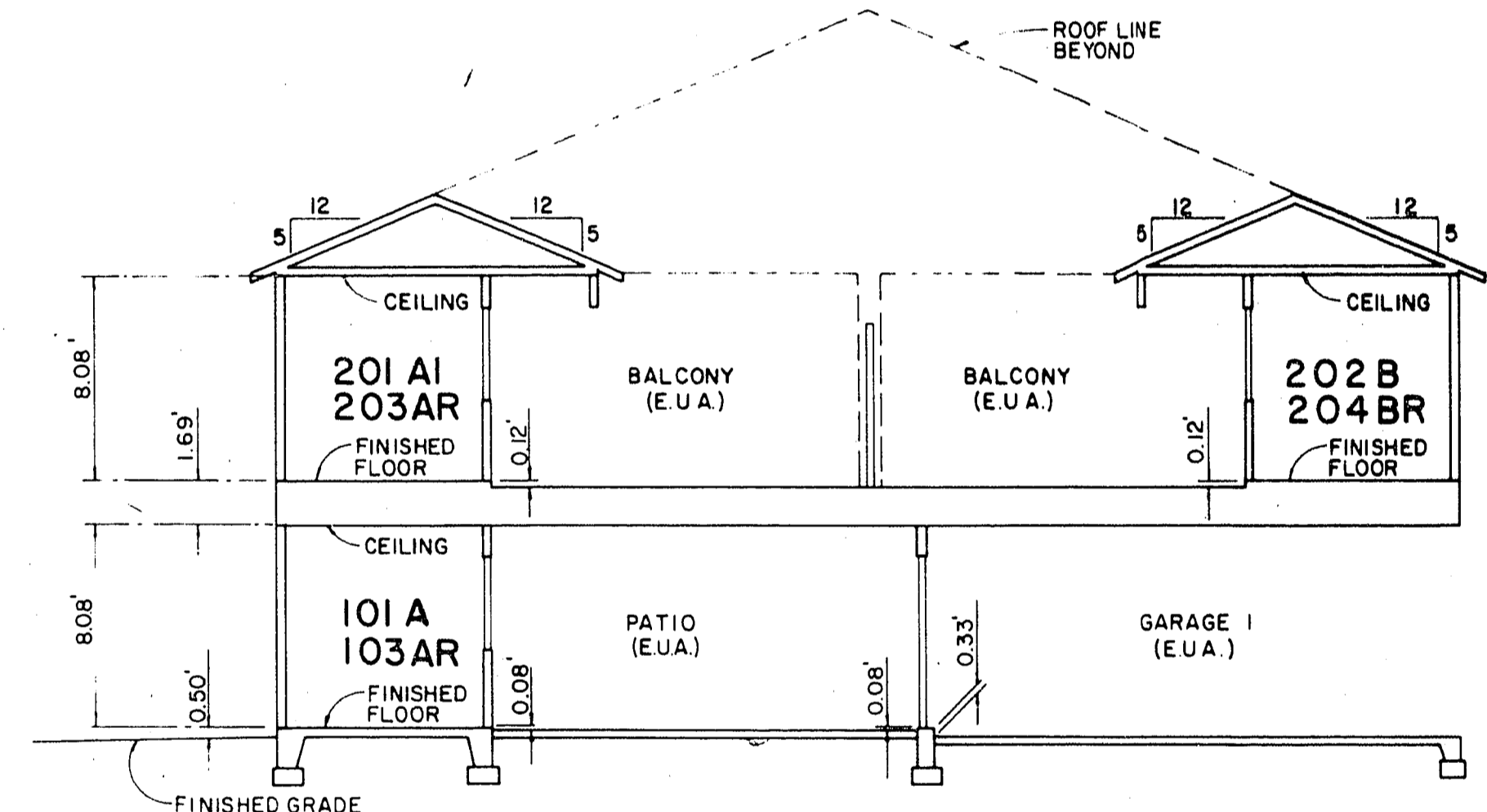
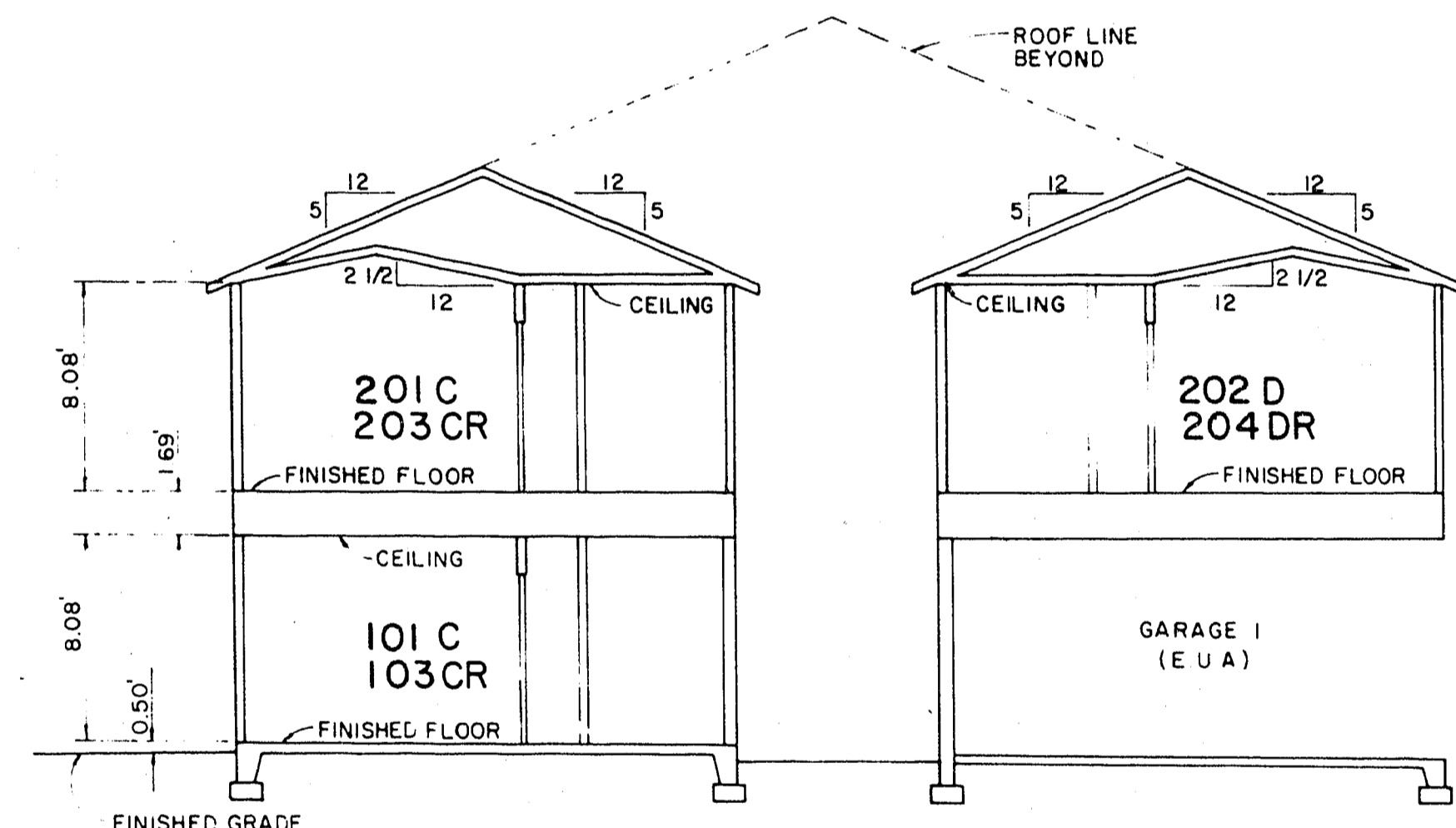
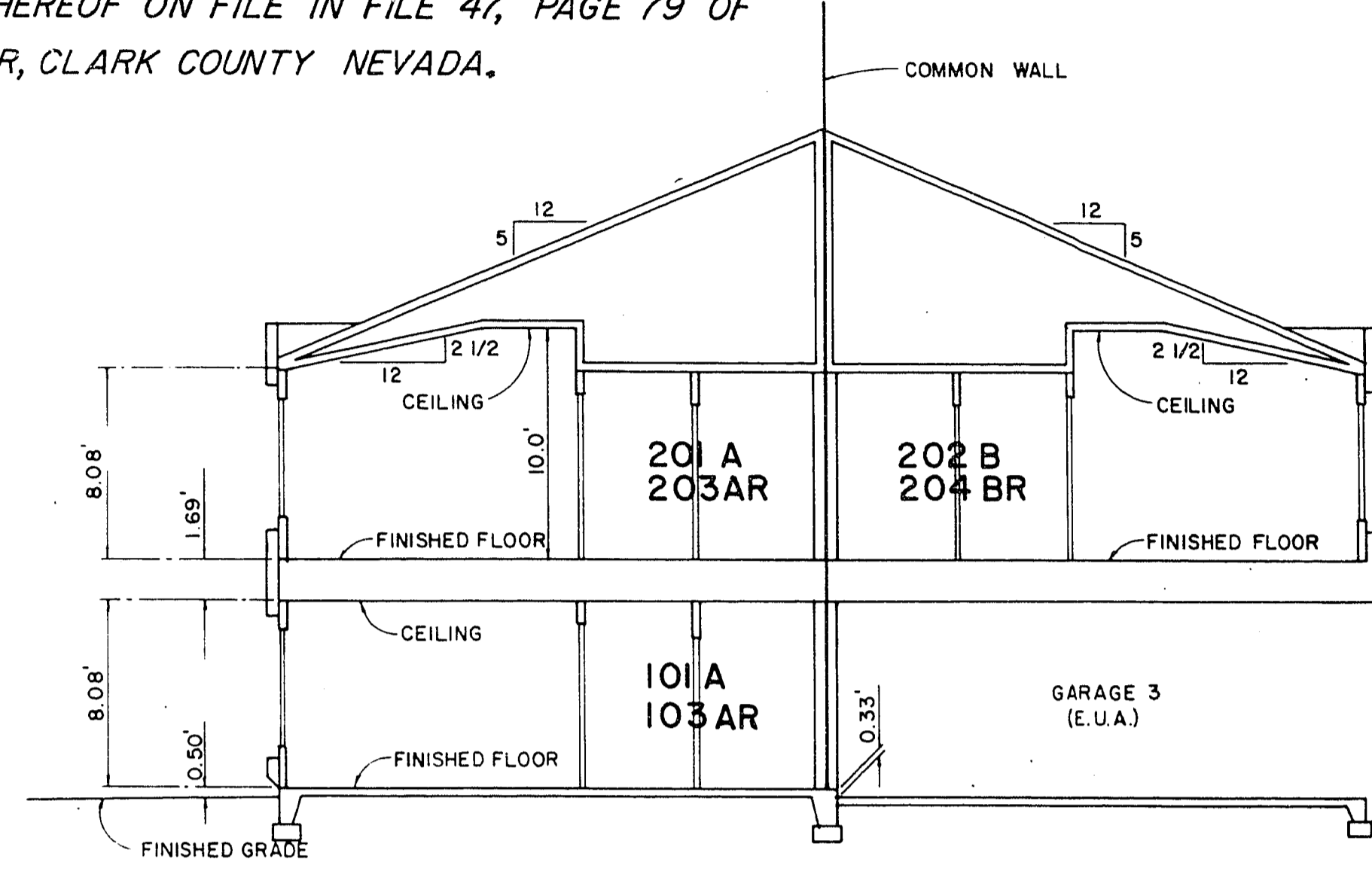
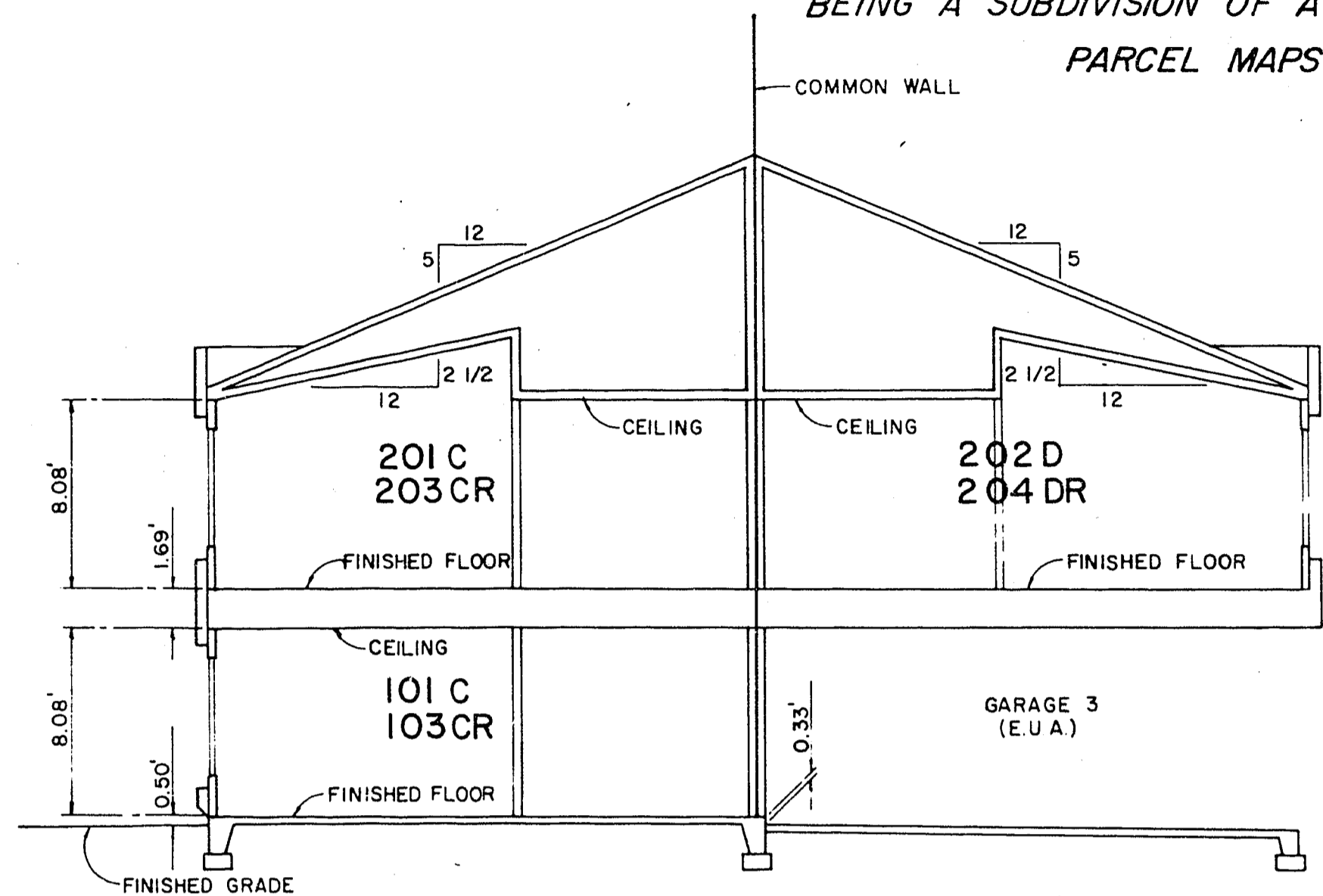
Book 890630

LAKESIDE CONDOMINIUMS NO. 2

00832

A RESIDENTIAL PLANNED DEVELOPMENT FOR CONDOMINIUM PURPOSES

Situated in the Southwest Quarter (SW 1/4) of Section 8, T.21S.,R.60E.,M.D.M., City of Las Vegas, Clark County, Nevada
BEING A SUBDIVISION OF A PORTION OF LOT 1 AS SHOWN BY MAP THEREOF ON FILE IN FILE 47, PAGE 79 OF
PARCEL MAPS IN THE OFFICE OF THE COUNTY RECORDER, CLARK COUNTY NEVADA.



TYPICAL SECTIONS
FLOOR PLANS C, D & E

B-2

TYPICAL SECTIONS
FLOOR PLANS A & B

A-1