

Book 890630

LAKESIDE CONDOMINIUMS NO. 2

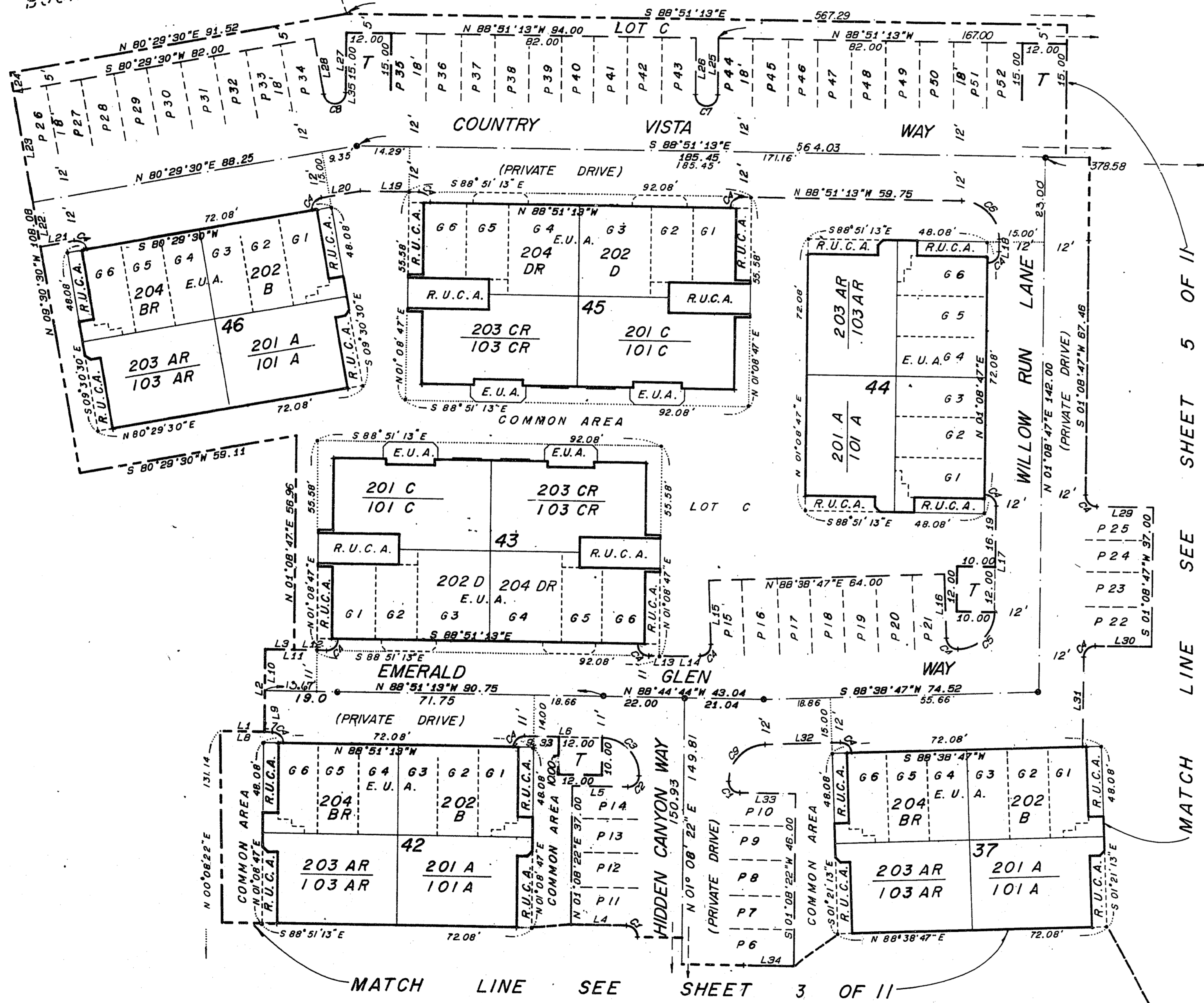
00832

A RESIDENTIAL PLANNED DEVELOPMENT FOR CONDOMINIUM PURPOSES

Situated in the Southwest Quarter (SW 1/4) of Section 8, T.21S., R.60E., M.D.M., City of Las Vegas, Clark County, Nevada
BEING A SUBDIVISION OF A PORTION OF LOT 1 AS SHOWN BY MAP THEREOF ON FILE IN FILE 47, PAGE 79 OF
PARCEL MAPS IN THE OFFICE OF THE COUNTY RECORDER, CLARK COUNTY NEVADA.

CARMEL POINT NO. 4
BY LEWIS HOMES
BOOK 37 PAGE 79

CARMEL POINT NO. 3 BY LEWIS HOMES
BOOK 36 PAGE 9



LINE	BEARING	DISTANCE
1	S 88°51'13"E	11.90
2	N 01°08'47"E	22.00
3	S 88°51'13"E	7.66
4	N 88°51'38"W	15.00
5	S 88°51'38"W	15.00
6	N 88°51'13"W	21.33
7	N 88°51'13"W	2.01
8	S 88°51'13"E	13.91
9	N 01°08'47"E	11.00
10	N 01°08'47"E	11.00
11	S 88°51'13"E	18.33
12	N 88°51'13"W	8.67
13	S 88°51'13"E	9.41
14	N 88°38'47"E	4.26
15	N 01°21'13"W	17.00
16	S 01°21'13"E	17.00
17	N 01°08'47"E	28.19
18	N 01°08'47"E	3.33
19	N 88°51'13"W	15.83
20	S 80°29'30"W	10.57
21	S 80°29'30"W	9.15
22	N 09°30'30"W	12.00
23	N 09°30'30"W	30.00
24	N 09°30'30"W	5.00
25	S 01°08'47"W	15.00
26	N 01°08'47"E	15.00
27	S 01°08'47"W	15.88
28	N 09°30'30"W	15.00
29	S 88°51'13"E	15.00
30	N 88°51'13"W	15.00
31	S 01°08'47"W	24.03
32	S 88°38'47"W	21.19
33	S 88°51'38"E	15.00
34	N 88°51'38"W	13.50
35	N 01°08'47"E	0.86

CURVE	DELTA	RADIUS	LENGTH	TANGENT
1	90°00'00"	3.00	4.71	3.00
2	90°00'00"	3.00	4.71	3.00
3	88°59'35"	10.00	15.71	10.00
4	90°00'00"	3.00	4.71	3.00
5	87°30'00"	10.00	15.27	9.57
6	90°00'00"	10.00	15.71	10.00
7	180°00'00"	3.00	9.42	
8	169°20'43"	3.00	8.87	32.17
9	87°30'25"	10.00	15.27	9.57

