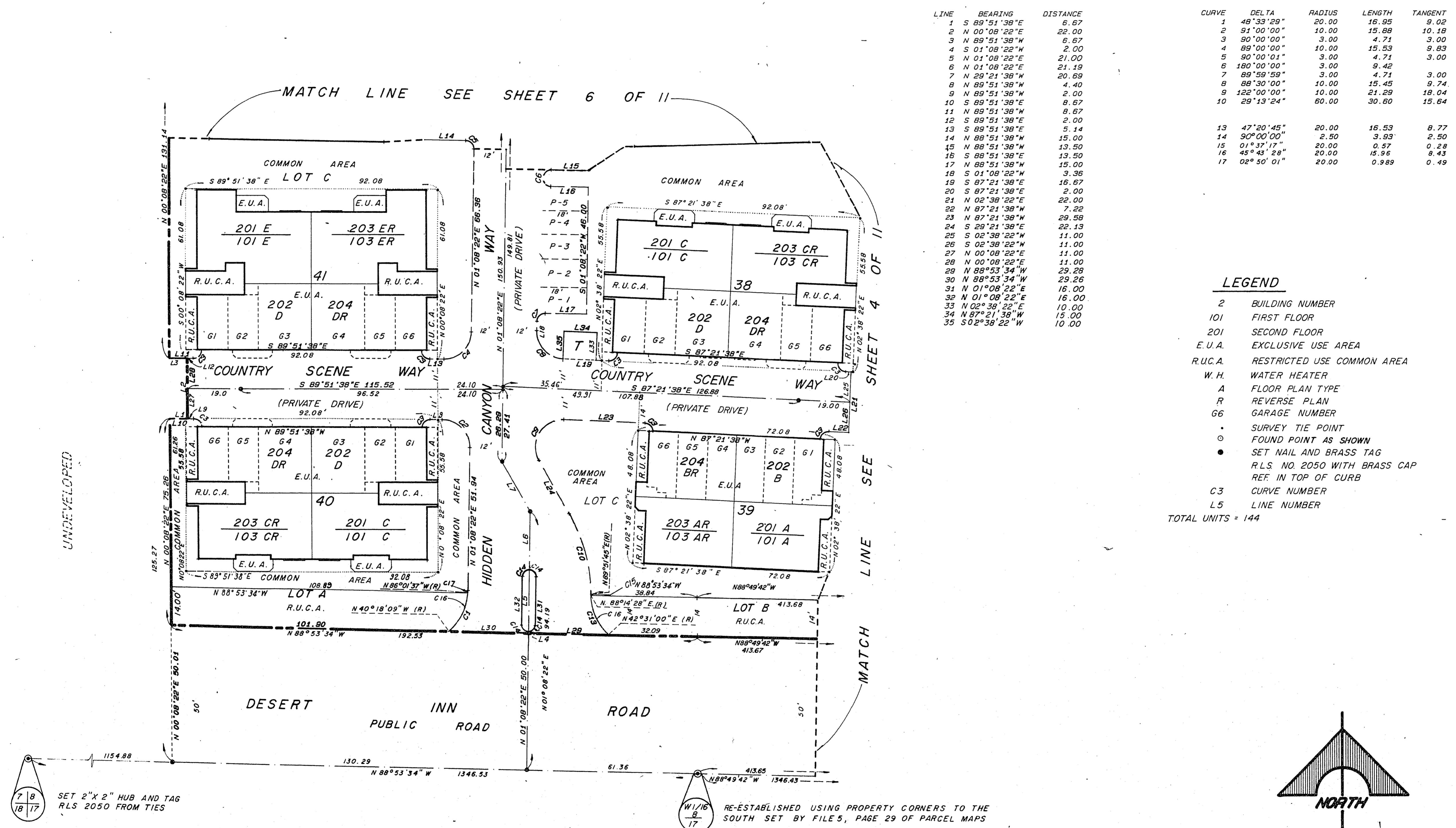


LAKE SIDE CONDOMINIUMS NO. 2

A RESIDENTIAL PLANNED DEVELOPMENT FOR CONDOMINIUM PURPOSES

Situated in the Southwest Quarter (SW 1/4) of Section 8, T.21S., R.60E., M.D.M., City of Las Vegas, Clark County, Nevada
BEING A SUBDIVISION OF A PORTION OF LOT 1 AS SHOWN BY MAP THEREOF ON FILE IN FILE 47, PAGE 79 OF
PARCEL MAPS IN THE OFFICE OF THE COUNTY RECORDER, CLARK COUNTY NEVADA.



LINE	BEARING	DISTANCE
1	S 89°51'38"E	6.67
2	N 00°08'22"E	22.00
3	N 89°51'38"W	6.67
4	S 01°08'22"W	2.00
5	N 01°08'22"E	21.00
6	N 01°08'22"E	21.19
7	N 29°21'38"W	20.69
8	N 89°51'38"W	4.40
9	N 89°51'38"W	2.00
10	S 89°51'38"E	8.67
11	N 89°51'38"W	8.67
12	S 89°51'38"E	2.00
13	S 89°51'38"E	5.14
14	N 88°51'38"W	15.00
15	N 88°51'38"W	13.50
16	S 88°51'38"E	13.50
17	N 88°51'38"W	15.00
18	S 01°08'22"W	3.36
19	S 87°21'38"E	16.67
20	S 87°21'38"E	2.00
21	N 02°38'22"E	22.00
22	N 87°21'38"W	7.22
23	N 87°21'38"W	29.58
24	S 29°21'38"E	22.13
25	S 02°38'22"W	11.00
26	S 02°38'22"W	11.00
27	N 00°08'22"E	11.00
28	N 00°08'22"E	11.00
29	N 88°53'34"W	29.28
30	N 88°53'34"W	29.28
31	N 01°08'22"E	16.00
32	N 01°08'22"E	16.00
33	N 02°38'22"E	10.00
34	N 87°21'38"W	15.00
35	S 02°38'22"W	10.00

CURVE	DELTA	RADIUS	LENGTH	TANGENT
1	49°33'29"	20.00	16.95	9.02
2	91°00'00"	10.00	15.88	10.18
3	90°00'00"	3.00	4.71	3.00
4	89°00'00"	10.00	15.53	9.83
5	90°00'01"	3.00	4.71	3.00
6	180°00'00"	3.00	9.42	3.00
7	89°59'59"	3.00	4.71	3.00
8	88°30'00"	10.00	15.45	9.74
9	122°00'00"	10.00	21.29	18.04
10	29°13'24"	60.00	30.60	15.64
13	47°20'45"	20.00	16.53	8.77
14	90°00'00"	2.50	3.93	2.50
15	01°37'17"	20.00	0.57	0.28
16	45°43'28"	20.00	15.96	8.43
17	02°50'01"	20.00	0.989	0.49

LEGEND

- 2 BUILDING NUMBER
 - 101 FIRST FLOOR
 - 201 SECOND FLOOR
 - E.U.A. EXCLUSIVE USE AREA
 - R.U.C.A. RESTRICTED USE COMMON AREA
 - W.H. WATER HEATER
 - A FLOOR PLAN TYPE
 - R REVERSE PLAN
 - G6 GARAGE NUMBER
 - SURVEY TIE POINT
 - FOUND POINT AS SHOWN
 - SET NAIL AND BRASS TAG
 - RLS NO. 2050 WITH BRASS CAP
 - REF IN TOP OF CURB
 - C3 CURVE NUMBER
 - L5 LINE NUMBER
- TOTAL UNITS = 144

7 8
18 17
SET 2" X 2" HUB AND TAG
RLS 2050 FROM TIES

W 1/16
B
17
RE-ESTABLISHED USING PROPERTY CORNERS TO THE
SOUTH SET BY FILE 5, PAGE 29 OF PARCEL MAPS

