

# JADE PARK UNIT NO. 6

BEING A PORTION OF THE SW 1/4, OF SEC. 2, T20S, R60E, MDB & M, CITY OF LAS VEGAS CLARK COUNTY, NEVADA

779991

BOOK 820

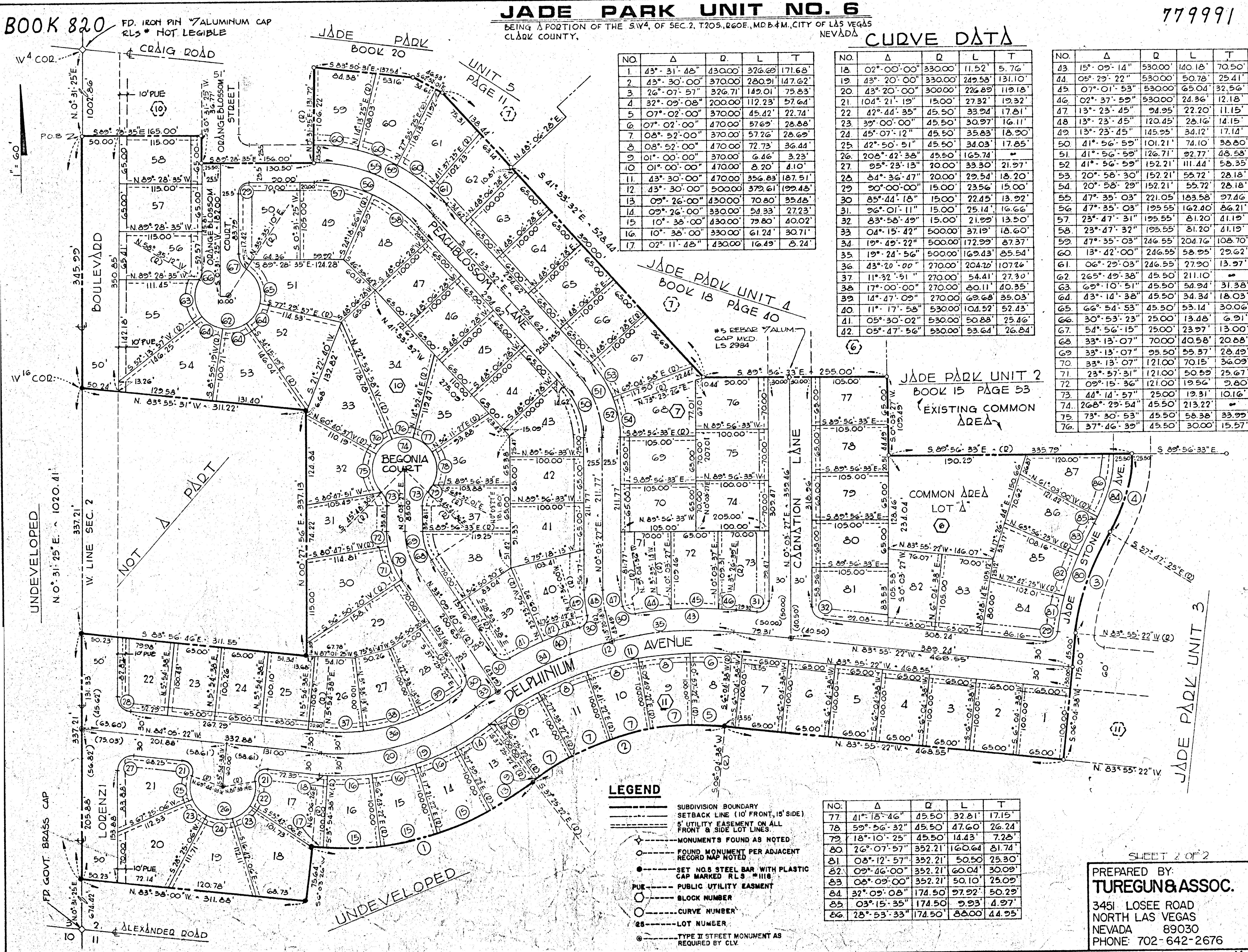
FD. IRON PIN 7/16 ALUMINUM CAP  
RLS \* NOT LEGIBLE

## CURVE DATA

NO.	Δ	R	L	T
1	43°-31'-48"	430.00	376.69	171.68'
2	43°-30'-00"	370.00	280.91	147.62'
3	26°-07'-57"	326.71	149.01	75.83'
4	32°-09'-08"	200.00	112.23	57.64'
5	07°-02'-00"	370.00	45.42	22.74'
6	07°-02'-00"	470.00	57.69	28.88'
7	08°-52'-00"	370.00	57.26	28.69'
8	08°-52'-00"	470.00	72.73	36.44'
9	01°-00'-00"	370.00	6.46	3.23'
10	01°-00'-00"	470.00	8.20	4.10'
11	43°-30'-00"	470.00	356.83	187.51'
12	43°-30'-00"	500.00	379.61	199.48'
13	09°-26'-00"	430.00	70.80	35.48'
14	09°-26'-00"	330.00	54.33	27.23'
15	10°-38'-00"	430.00	79.80	40.02'
16	10°-38'-00"	330.00	61.24	30.71'
17	02°-11'-48"	430.00	16.49	8.24'

NO.	Δ	R	L	T
18	02°-00'-00"	330.00	11.52	5.76'
19	43°-20'-00"	330.00	249.58	131.10'
20	43°-20'-00"	300.00	226.89	119.18'
21	104°-21'-19"	15.00	27.32	13.32'
22	42°-44'-35"	45.50	33.94	17.81'
23	39°-00'-00"	45.50	30.97	16.11'
24	45°-07'-12"	45.50	35.83	18.90'
25	42°-50'-51"	45.50	34.03	17.85'
26	208°-42'-38"	45.50	165.74	86.88'
27	95°-23'-13"	20.00	33.30	21.97'
28	84°-36'-47"	20.00	29.54	18.20'
29	90°-00'-00"	15.00	23.56	15.00'
30	85°-44'-18"	15.00	22.45	13.92'
31	96°-01'-11"	15.00	25.14	16.66'
32	83°-58'-49"	15.00	21.99	13.50'
33	04°-15'-42"	500.00	37.19	18.60'
34	19°-45'-22"	500.00	172.99	87.37'
35	19°-24'-56"	500.00	169.43	85.54'
36	43°-20'-00"	270.00	204.76	107.76'
37	11°-32'-51"	270.00	54.41	27.30'
38	17°-00'-00"	270.00	80.11	40.35'
39	14°-47'-09"	270.00	69.68	35.03'
40	11°-17'-58"	530.00	104.59	52.43'
41	05°-30'-02"	530.00	50.88	25.46'
42	05°-47'-56"	530.00	53.64	26.84'

NO.	Δ	R	L	T
43	15°-09'-14"	530.00	140.18	70.50'
44	05°-29'-22"	530.00	50.78	25.41'
45	07°-01'-53"	530.00	65.04	32.56'
46	02°-37'-59"	530.00	24.36	12.18'
47	13°-23'-45"	94.95	22.20	11.15'
48	13°-23'-45"	120.45	28.16	14.15'
49	13°-23'-45"	145.95	34.12	17.14'
50	41°-56'-59"	101.21	74.10	38.80'
51	41°-56'-59"	126.71	92.77	48.58'
52	41°-56'-59"	152.21	111.44	58.35'
53	20°-58'-30"	152.21	55.72	28.18'
54	20°-58'-30"	152.21	55.72	28.18'
55	47°-35'-03"	221.05	183.58	97.46'
56	47°-35'-03"	195.55	162.40	86.21'
57	23°-47'-31"	195.55	81.20	41.19'
58	23°-47'-31"	195.55	81.20	41.19'
59	47°-35'-03"	246.55	204.76	108.70'
60	13°-42'-00"	246.55	58.95	29.62'
61	06°-29'-03"	246.55	27.90	13.97'
62	265°-49'-38"	45.50	211.10	108.55'
63	69°-10'-51"	45.50	54.94	31.38'
64	43°-14'-38"	45.50	34.34	18.03'
65	66°-54'-53"	45.50	53.14	30.06'
66	30°-53'-23"	25.00	13.48	6.91'
67	54°-56'-15"	25.00	23.97	13.00'
68	33°-13'-07"	70.00	40.58	20.88'
69	33°-13'-07"	95.50	55.37	28.49'
70	33°-13'-07"	121.00	70.15	36.09'
71	23°-57'-31"	121.00	50.59	25.67'
72	09°-15'-36"	121.00	19.56	9.80'
73	44°-14'-57"	25.00	13.31	10.16'
74	268°-29'-54"	45.50	213.22	108.61'
75	73°-30'-53"	45.50	58.38	33.99'
76	37°-46'-39"	45.50	30.00	15.57'



### LEGEND

- SUBDIVISION BOUNDARY
- SETBACK LINE (10' FRONT, 15' SIDE)
- 5' UTILITY EASEMENT ON ALL FRONT & SIDE LOT LINES
- ◆ MONUMENTS FOUND AS NOTED
- FOUND MONUMENT PER ADJACENT RECORD MAP NOTED
- SET NO. 5 STEEL BAR WITH PLASTIC CAP MARKED RLS #1118
- PUBLIC UTILITY EASEMENT
- BLOCK NUMBER
- CURVE NUMBER
- LOT NUMBER
- TYPE II STREET MONUMENT AS REQUIRED BY CLV

NO.	Δ	R	L	T
77	41°-18'-46"	45.50	32.81	17.15'
78	59°-56'-32"	45.50	47.60	26.24'
79	18°-10'-25"	45.50	14.43	7.28'
80	26°-07'-57"	352.21	160.64	81.74'
81	08°-12'-57"	352.21	50.50	25.30'
82	09°-46'-00"	352.21	60.04	30.09'
83	08°-09'-00"	352.21	50.10	25.09'
84	32°-09'-08"	174.50	97.92	50.29'
85	03°-15'-35"	174.50	9.93	4.97'
86	28°-53'-33"	174.50	88.00	44.95'

SHEET 2 OF 2

PREPARED BY:  
**TUREGUN & ASSOC.**  
3451 LOSEE ROAD  
NORTH LAS VEGAS  
NEVADA 89030  
PHONE: 702-642-2676

