

LEGEND
 - - - - - Proposed right-of-way per CLV
 - - - - - Easements reserved in recorded Patents

SHEET 1 OF 2

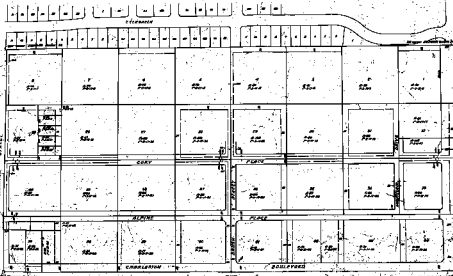
LAS VEGAS VALLEY WATER DISTRICT
 ASSESSMENT DISTRICT NO. 15 UNIT
 WILLIAM C. RENSHAW
 CHIEF ENGR. & GEN. MGR.

E 1/2 S 1/2 S 1/2
 SECTION 36, T. 20 S., R. 60 E.

APPROVED	DATE	SCALE
TEVFIK TUREGLIN-CONSULTING ENGINEER		1"=100'
LAS VEGAS, NEVADA	15-9	

107-V13

Not Part of Assessment - SAD 4/52



1	2	3	4	5	6	7	8
9	10	11	12	13	14	15	16
17	18	19	20	21	22	23	24
25	26	27	28	29	30	31	32
33	34	35	36	37	38	39	40
41	42	43	44	45	46	47	48
49	50	51	52	53	54	55	56
57	58	59	60	61	62	63	64
65	66	67	68	69	70	71	72
73	74	75	76	77	78	79	80
81	82	83	84	85	86	87	88
89	90	91	92	93	94	95	96
97	98	99	100	101	102	103	104

OWNER: [illegible]
 ARCHITECT: [illegible]
 ENGINEER: [illegible]

APPROVED FOR THE CITY OF [illegible]
 [illegible]
 [illegible]
 [illegible]