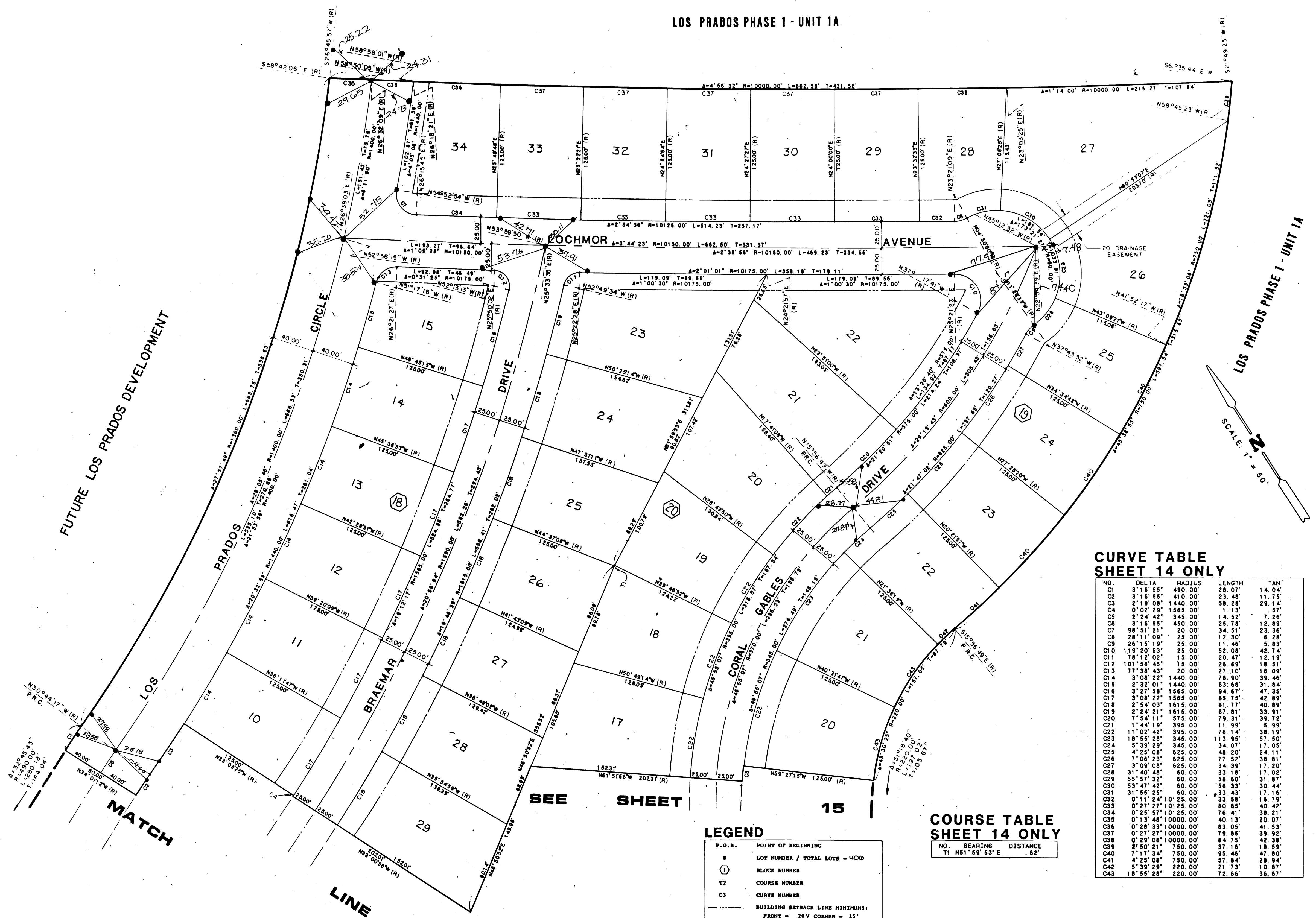


# LOS PRADOS PHASE 1 - UNIT 1

A PORTION OF SECTION 36, T. 19 S., R. 60 E., M.D.M., CITY OF LAS VEGAS, CLARK COUNTY, NEVADA



**CURVE TABLE SHEET 14 ONLY**

NO.	DELTA	RADIUS	LENGTH	TAN
C1	3°16'55"	490.00'	28.07'	14.04'
C2	3°16'55"	410.00'	23.48'	11.75'
C3	2°19'08"	1440.00'	58.28'	29.14'
C4	0°02'29"	1585.00'	1.13'	0.57'
C5	2°24'42"	345.00'	14.52'	7.26'
C6	3°16'55"	450.00'	25.78'	12.89'
C7	98°51'21"	20.00'	34.51'	23.36'
C8	28°11'09"	25.00'	12.30'	6.28'
C9	26°15'19"	25.00'	11.46'	5.83'
C10	119°20'53"	25.00'	52.08'	42.74'
C11	78°12'02"	15.00'	20.47'	12.19'
C12	101°56'45"	15.00'	26.69'	18.51'
C13	77°38'43"	20.00'	27.10'	16.09'
C14	3°08'22"	1440.00'	78.90'	39.46'
C15	2°32'01"	1440.00'	63.68'	31.84'
C16	3°27'58"	1565.00'	94.67'	47.35'
C17	3°08'22"	1565.00'	85.75'	42.89'
C18	2°54'03"	1615.00'	81.77'	40.89'
C19	2°24'21"	1615.00'	67.81'	33.91'
C20	7°54'11"	575.00'	79.31'	39.72'
C21	1°44'19"	395.00'	11.99'	5.99'
C22	11°02'42"	395.00'	76.14'	38.19'
C23	18°55'28"	345.00'	113.95'	57.50'
C24	5°39'29"	345.00'	34.07'	17.05'
C25	4°25'08"	625.00'	48.20'	24.11'
C26	7°06'23"	625.00'	77.52'	38.81'
C27	3°09'08"	625.00'	34.39'	17.20'
C28	31°40'48"	60.00'	33.18'	17.02'
C29	55°57'32"	60.00'	58.60'	31.87'
C30	53°47'42"	60.00'	56.33'	30.44'
C31	31°55'25"	60.00'	33.43'	17.18'
C32	0°11'24"	10125.00'	33.58'	16.79'
C33	0°27'27"	10125.00'	80.85'	40.42'
C34	0°25'57"	10125.00'	76.41'	38.51'
C35	0°13'48"	10000.00'	40.13'	20.07'
C36	0°28'33"	10000.00'	83.05'	41.53'
C37	0°27'27"	10000.00'	79.85'	39.82'
C38	0°29'08"	10000.00'	84.75'	42.38'
C39	2°50'21"	750.00'	37.18'	18.59'
C40	7°17'34"	750.00'	95.46'	47.80'
C41	4°25'08"	750.00'	57.84'	28.84'
C42	5°39'29"	220.00'	21.73'	10.87'
C43	18°55'28"	220.00'	72.66'	36.87'

**COURSE TABLE SHEET 14 ONLY**

NO.	BEARING	DISTANCE
T1	N51°59'53"E	.62'

**LEGEND**

P.O.B. POINT OF BEGINNING

① LOT NUMBER / TOTAL LOTS = 4/04

□ BLOCK NUMBER

T2 COURSE NUMBER

C3 CURVE NUMBER

--- BUILDING SETBACK LINE MINIMUMS:  
FRONT = 20' / CORNER = 15'

• FOUND POINT AS INDICATED

• SET 5/8" REBAR & ALUM. CAP W/BRASS CAP REF., L.S. 6201

(R) RADIAL LINE

NOTE: ALL STREETS ARE PRIVATE DRIVE AND P.U.E. UNLESS OTHERWISE NOTED.

5-6-85