

LOS PRADOS PHASE 1 - UNIT 1

A PORTION OF SECTION 36, T. 19 S., R. 60 E., M.D.M., CITY OF LAS VEGAS, CLARK COUNTY, NEVADA

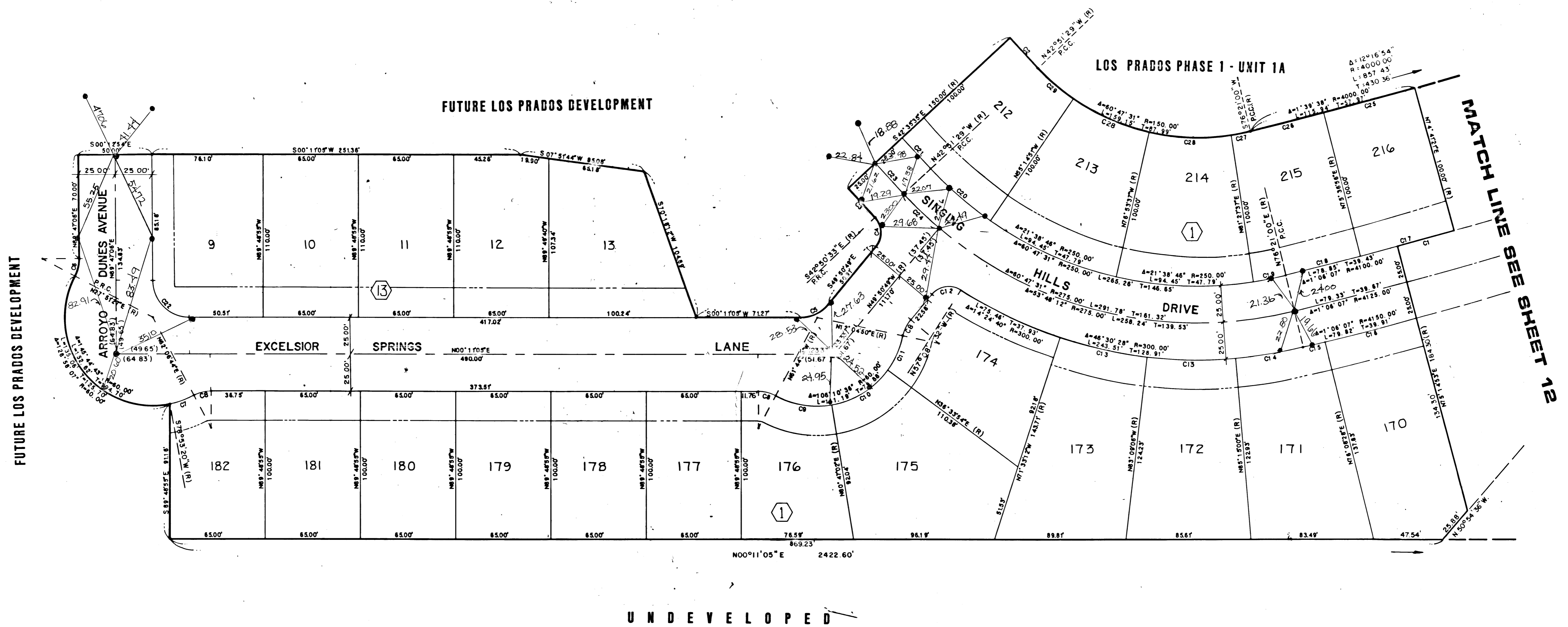
**CURVE TABLE
SHEET 13 ONLY**

NO.	DELTA	RADIUS	LENGTH	TAN
C1	0°33'31"	4100.00'	39.98'	19.99'
C2	0°15'54"	6000.00'	27.76'	13.88'
C3	0°14'58"	6150.00'	26.77'	13.39'
C4	82°59'44"	15.00'	21.73'	13.27'
C5	50°01'54"	25.00'	21.83'	11.67'
C6	28°04'21"	25.00'	12.25'	6.25'
C7	16°46'36"	60.00'	17.57'	8.85'
C8	28°04'21"	25.00'	12.25'	6.25'
C9	37°28'24"	60.00'	39.24'	20.35'
C10	44°13'08"	60.00'	46.31'	24.37'
C11	24°29'04"	60.00'	25.64'	13.02'
C12	82°42'17"	15.00'	21.65'	13.20'
C13	11°35'54"	300.00'	60.73'	30.47'
C14	8°54'00"	300.00'	46.60'	23.35'
C15	0°12'32"	4150.00'	15.13'	7.57'
C16	0°53'35"	4150.00'	64.69'	32.34'
C17	0°55'35"	4100.00'	66.29'	33.15'
C18	0°44'03"	4100.00'	52.34'	26.27'
C19	5°06'37"	250.00'	22.30'	11.16'
C20	12°23'22"	250.00'	54.06'	27.14'
C21	0°15'54"	6100.00'	28.22'	14.11'
C22	89°36'01"	25.00'	39.10'	24.83'
C23	0°15'54"	6125.00'	28.34'	14.17'
C24	6°59'20"	275.00'	33.54'	16.79'
C25	0°55'35"	4000.00'	64.67'	32.34'
C26	0°44'03"	4000.00'	51.18'	25.83'
C27	5°06'37"	150.00'	13.38'	6.69'
C28	21°38'46"	150.00'	56.87'	28.88'
C29	12°23'22"	150.00'	32.44'	16.28'

LEGEND

- P.O.B. POINT OF BEGINNING
- Ⓢ LOT NUMBER / TOTAL LOTS = 400
- Ⓛ BLOCK NUMBER
- Y2 COURSE NUMBER
- C3 CURVE NUMBER
- BUILDING SETBACK LINE MINIMUMS:
FRONT = 20' / CORNER = 15'
- FOUND POINT AS INDICATED
- SET 5/8" BEAR & ALUM. CAP W/BRASS
CAP REF., L.S. 6201
- (R) RADIAL LINE

NOTE: ALL STREETS ARE PRIVATE DRIVE AND P.U.E.
UNLESS OTHERWISE NOTED.



56-14