

LOS PRADOS PHASE 1 - UNIT 1

A PORTION OF SECTION 36, T. 19 S., R. 60 E., M.D.M., CITY OF LAS VEGAS, CLARK COUNTY, NEVADA

**CURVE TABLE
SHEET 12 ONLY**

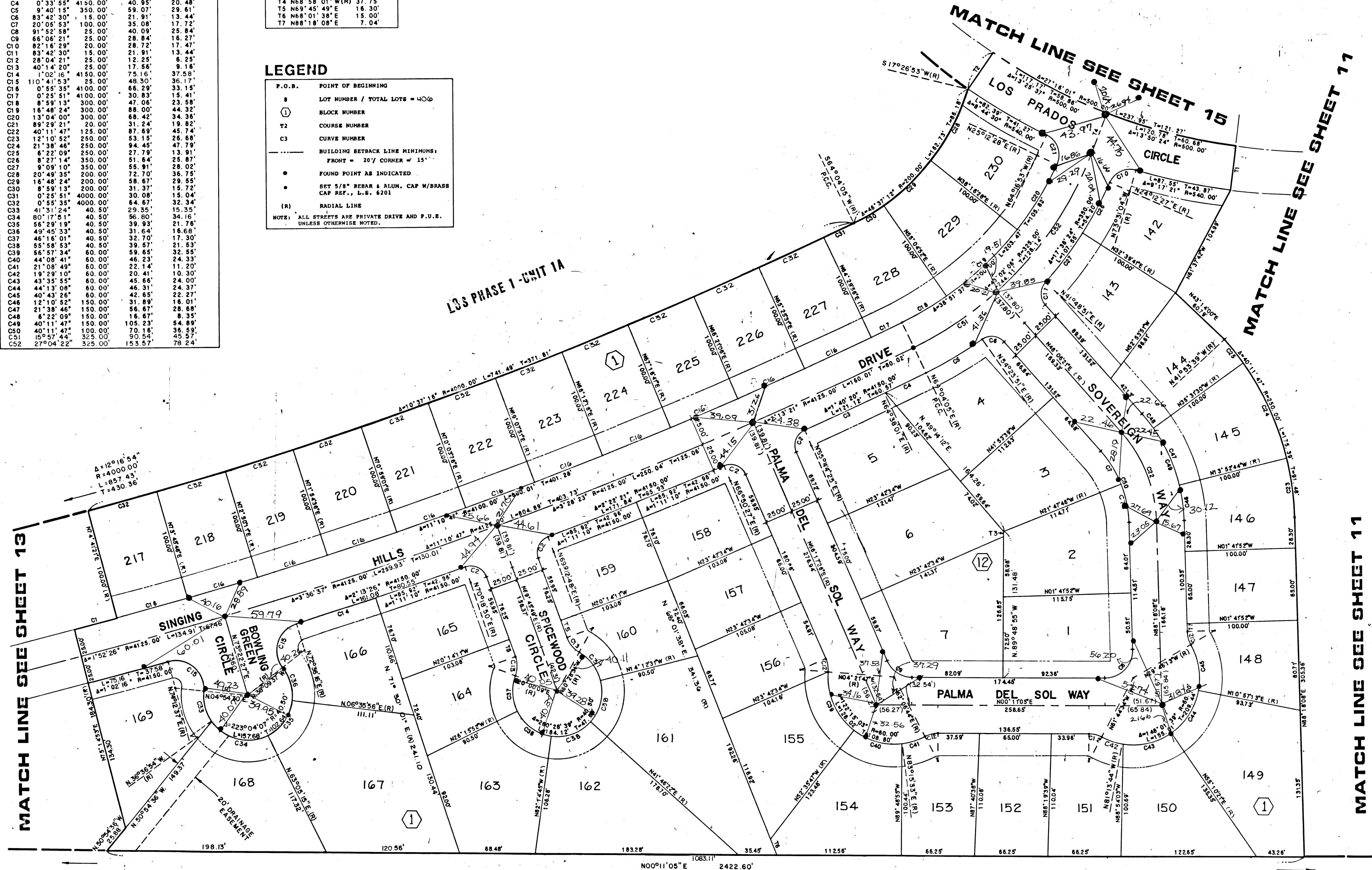
NO.	DELTA	RADIUS	LENGTH	TAN
C1	0° 33' 31"	4100.00'	39.98'	19.99'
C2	89° 26' 59"	15.00'	23.42'	14.86'
C3	1° 06' 25"	4150.00'	80.17'	40.09'
C4	0° 33' 55"	4150.00'	40.95'	20.48'
C5	9° 40' 15"	350.00'	59.07'	29.61'
C6	83° 42' 30"	15.00'	21.91'	13.44'
C7	20° 05' 53"	100.00'	15.08'	7.72'
C8	91° 52' 58"	25.00'	40.09'	25.84'
C9	66° 06' 21"	25.00'	28.84'	18.27'
C10	82° 16' 29"	20.00'	28.72'	17.47'
C11	83° 42' 30"	15.00'	21.91'	13.44'
C12	28° 04' 21"	25.00'	12.25'	6.25'
C13	40° 14' 20"	25.00'	17.56'	9.18'
C14	1° 02' 16"	4150.00'	75.16'	37.58'
C15	110° 41' 53"	25.00'	48.30'	36.17'
C16	0° 55' 35"	4100.00'	66.29'	33.15'
C17	0° 25' 51"	4100.00'	30.83'	15.41'
C18	8° 59' 13"	300.00'	47.06'	23.58'
C19	16° 48' 24"	300.00'	88.00'	44.32'
C20	13° 04' 00"	300.00'	68.42'	34.36'
C21	89° 29' 21"	20.00'	31.24'	19.82'
C22	40° 11' 47"	125.00'	87.69'	45.74'
C23	12° 10' 52"	250.00'	53.15'	26.68'
C24	21° 38' 48"	250.00'	64.45'	32.22'
C25	6° 22' 09"	250.00'	27.79'	13.91'
C26	8° 27' 14"	350.00'	51.64'	25.87'
C27	9° 09' 10"	350.00'	55.91'	28.07'
C28	20° 49' 35"	200.00'	72.70'	36.75'
C29	16° 48' 24"	200.00'	58.67'	29.55'
C30	8° 59' 13"	200.00'	31.37'	15.72'
C31	0° 25' 51"	4000.00'	15.04'	7.52'
C32	0° 55' 35"	4000.00'	64.67'	32.34'
C33	41° 31' 24"	40.50'	29.35'	15.35'
C34	80° 17' 51"	40.50'	56.80'	34.16'
C35	56° 29' 19"	40.50'	39.93'	21.76'
C36	49° 45' 33"	40.50'	31.64'	16.68'
C37	46° 16' 01"	40.50'	32.70'	17.30'
C38	55° 58' 53"	40.50'	39.57'	20.27'
C39	56° 57' 34"	60.00'	59.65'	32.55'
C40	44° 08' 41"	60.00'	46.23'	24.33'
C41	21° 08' 49"	60.00'	22.14'	11.20'
C42	40° 43' 26"	60.00'	42.65'	22.77'
C43	43° 35' 55"	60.00'	45.66'	24.00'
C44	44° 13' 08"	60.00'	46.31'	24.37'
C45	40° 43' 26"	60.00'	42.65'	22.77'
C46	12° 10' 52"	150.00'	31.89'	16.01'
C47	21° 38' 46"	150.00'	56.67'	28.68'
C48	8° 22' 09"	150.00'	18.87'	9.35'
C49	40° 11' 47"	150.00'	105.23'	54.88'
C50	40° 11' 47"	100.00'	70.18'	36.59'
C51	15° 57' 44"	325.00'	90.54'	45.97'
C52	27° 04' 22"	325.00'	153.57'	78.24'

**COURSE TABLE
SHEET 12 ONLY**

NO.	BEARING	DISTANCE
T1	N82° 48' 25" W(R)	40.00'
T2	N55° 32' 23" W(R)	40.00'
T3	N88° 48' 55" W	4.63'
T4	N68° 58' 01" W(R)	37.75'
T5	N69° 45' 49" E	16.30'
T6	N68° 01' 38" E	15.00'
T7	N88° 18' 08" E	7.04'

LEGEND

- P.O.B. POINT OF BEGINNING
 - ① LOT NUMBER / TOTAL LOTS = 400
 - ② BLOCK NUMBER
 - T2 COURSE NUMBER
 - C3 CURVE NUMBER
 - BUILDING SETBACK LINE MINIMUMS:
FRONT = 20' CORNER = 15'
 - FOUND POINT AS INDICATED
 - SET 5/8" REBAR & ALUM. CAP W/BRASS
CAP REF., L.S. 6201
 - (R) RADIAL LINE
- NOTE: ALL STREETS ARE PRIVATE DRIVE AND P.O.B. UNLESS OTHERWISE NOTED.



UNDEVELOPED



56-83