

LOS PRADOS PHASE 1 - UNIT 1

A PORTION OF SECTION 36, T. 19 S., R. 60 E., M.D.M., CITY OF LAS VEGAS, CLARK COUNTY, NEVADA

COURSE TABLE SHEET 11 ONLY

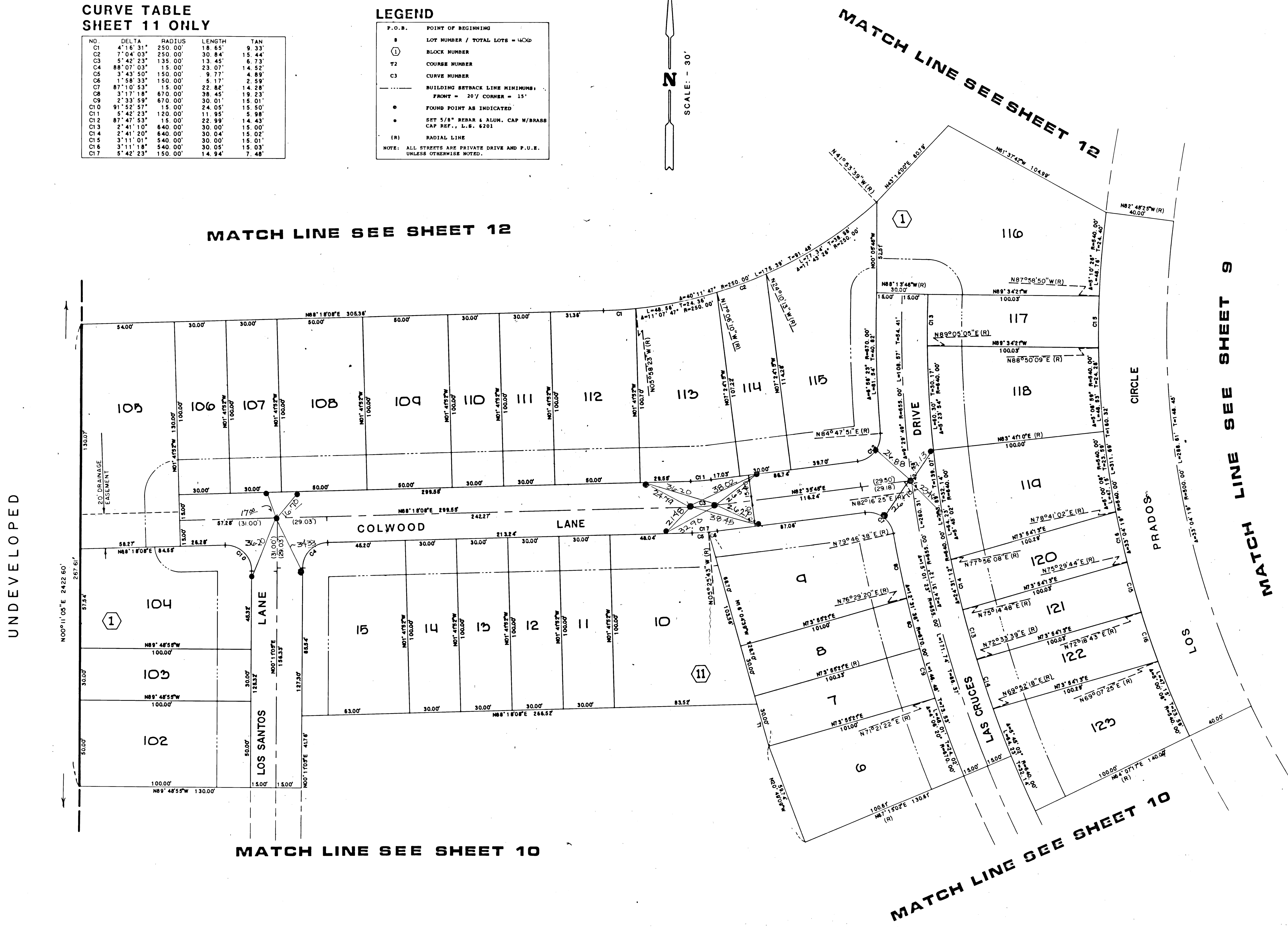
NO.	BEARING	DISTANCE
T1	N16°04'39"W	25.14'

CURVE TABLE SHEET 11 ONLY

NO.	DELTA	RADIUS	LENGTH	TAN
C1	4°16'31"	250.00'	18.65'	9.33'
C2	7°04'03"	250.00'	30.84'	15.44'
C3	5°42'23"	135.00'	13.45'	6.73'
C4	88°07'03"	15.00'	23.07'	14.52'
C5	3°43'50"	150.00'	9.77'	4.89'
C6	1°58'33"	150.00'	6.17'	2.99'
C7	87°10'53"	15.00'	22.82'	14.28'
C8	3°17'18"	670.00'	38.45'	19.23'
C9	2°33'59"	670.00'	30.01'	15.01'
C10	91°52'57"	15.00'	24.05'	15.50'
C11	5°42'23"	120.00'	11.95'	5.98'
C12	87°47'53"	15.00'	22.98'	14.43'
C13	2°41'10"	640.00'	30.00'	15.00'
C14	2°41'20"	640.00'	30.04'	15.02'
C15	3°11'01"	540.00'	30.00'	15.01'
C16	3°11'18"	540.00'	30.05'	15.03'
C17	5°42'23"	150.00'	14.94'	7.48'

LEGEND

- P.O.B. POINT OF BEGINNING
 - ① LOT NUMBER / TOTAL LOTS = 400
 - ② BLOCK NUMBER
 - T2 COURSE NUMBER
 - C3 CURVE NUMBER
 - BUILDING SETBACK LINE MINIMUMS:
FRONT = 20' CORNER = 15'
 - FOUND POINT AS INDICATED
 - SET 5/8" REBAR & ALUM. CAP W/BRASS
CAP REF. L.S. 6201
 - (R) RADIAL LINE
- NOTE: ALL STREETS ARE PRIVATE DRIVE AND P.U.E. UNLESS OTHERWISE NOTED.



UNDEVELOPED

MATCH LINE SEE SHEET 9

MATCH LINE SEE SHEET 10

MATCH LINE SEE SHEET 10

5-6-80