

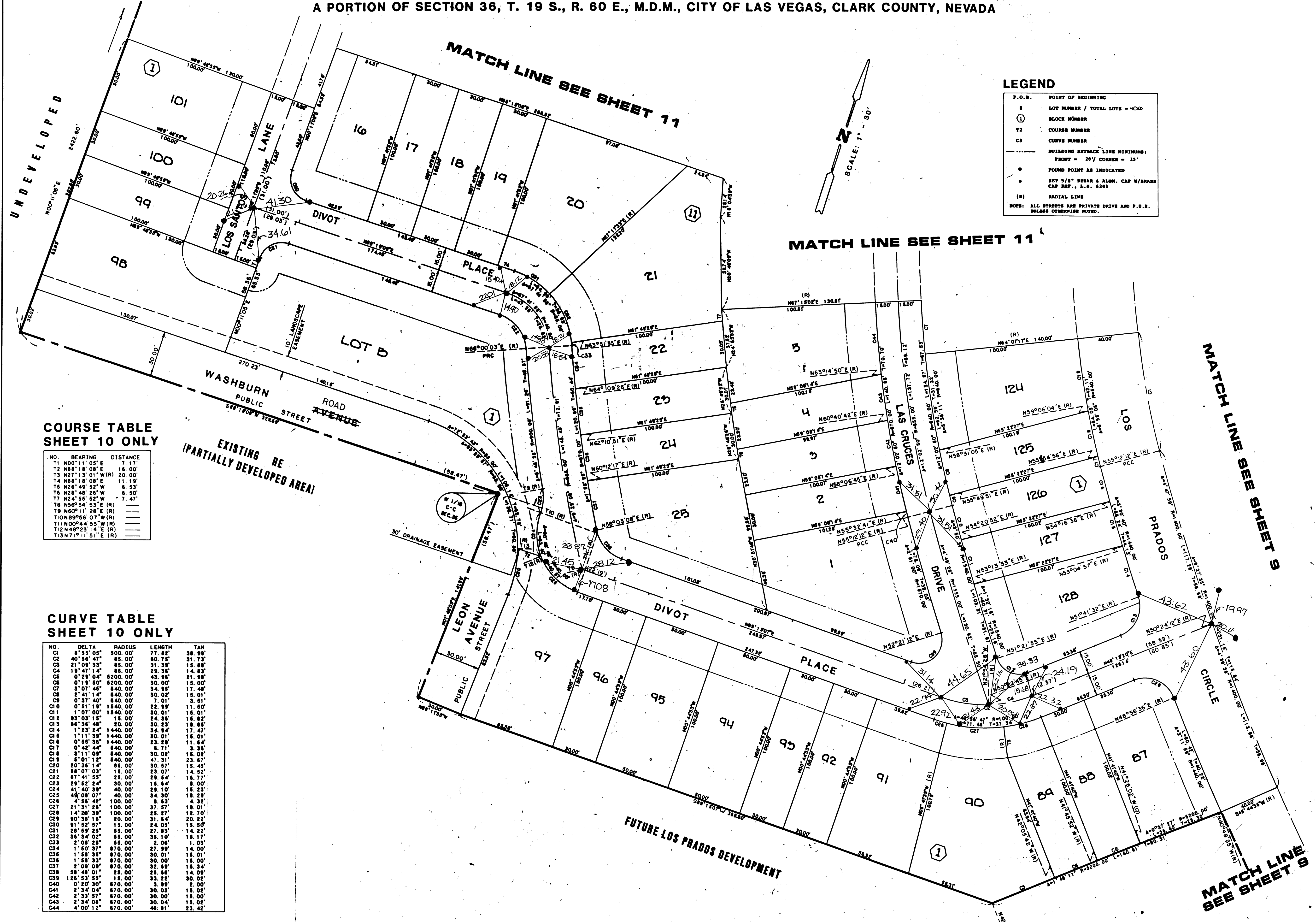
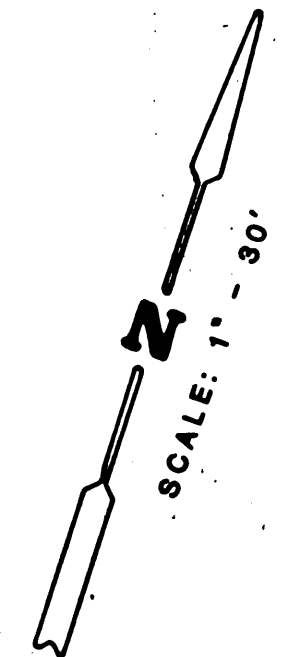
LOS PRADOS PHASE 1 - UNIT 1

A PORTION OF SECTION 36, T. 19 S., R. 60 E., M.D.M., CITY OF LAS VEGAS, CLARK COUNTY, NEVADA

LEGEND

- P.O.B. POINT OF BEGINNING
- B LOT NUMBER / TOTAL LOTS = 400
- ① BLOCK NUMBER
- T2 COURSE NUMBER
- C3 CURVE NUMBER
- BUILDING SETBACK LINE MINIMUMS:
FRONT = 30' / CORNER = 15'
- FOUND POINT AS INDICATED
- SET 5/8" BRASS & ALUM. CAP W/BRASS CAP MPT., L.S. 5291
- (R) RADIAL LINE

NOTE: ALL STREETS ARE PRIVATE DRIVE AND P.U.E. UNLESS OTHERWISE NOTED.



COURSE TABLE SHEET 10 ONLY

NO.	BEARING	DISTANCE
T1	N00°11'05"E	7.17'
T2	N88°18'08"E	16.00'
T3	N27°13'01"W (R)	20.00'
T4	N88°18'08"E	11.19'
T5	N26°49'52"W	6.53'
T6	N28°48'24"W	6.50'
T7	N24°55'52"W	7.47'
T8	N56°34'53"E (R)	
T9	N60°11'28"E (R)	
T10	N89°06'07"W (R)	
T11	N00°44'53"W (R)	
T12	N48°23'14"E (R)	
T13	N71°11'51"E (R)	

CURVE TABLE SHEET 10 ONLY

NO.	DELTA	RADIUS	LENGTH	TAN
C1	8°55'05"	500.00'	77.82'	38.98'
C2	40°56'47"	85.00'	60.75'	31.73'
C3	21°09'33"	85.00'	31.39'	16.88'
C4	1°19'47'14"	85.00'	28.38'	14.33'
C5	0°29'04"	5200.00'	43.88'	21.88'
C6	0°19'50"	5200.00'	30.00'	15.00'
C7	3°07'48"	640.00'	34.85'	17.48'
C8	2°41'14"	640.00'	30.02'	15.01'
C9	0°37'40"	640.00'	7.01'	3.51'
C10	0°51'18"	1540.00'	22.89'	11.50'
C11	1°07'00"	1840.00'	30.01'	15.01'
C12	83°03'15"	15.00'	24.38'	16.82'
C13	88°38'48"	20.00'	30.23'	18.85'
C14	1°23'24"	1440.00'	34.84'	17.47'
C15	1°11'39"	1440.00'	30.01'	15.01'
C16	0°55'38"	1440.00'	23.29'	11.64'
C17	0°42'44"	640.00'	6.71'	3.26'
C18	3°11'09"	640.00'	30.02'	15.02'
C19	8°01'12"	640.00'	47.31'	23.67'
C20	20°38'14"	85.00'	30.57'	15.45'
C21	88°07'03"	15.00'	23.07'	15.52'
C22	67°41'55"	25.00'	29.54'	16.77'
C23	29°52'24"	30.00'	15.84'	8.00'
C24	41°40'38"	40.00'	28.10'	16.33'
C25	48°08'07"	40.00'	34.30'	18.29'
C26	4°56'42"	100.00'	8.63'	4.32'
C27	21°31'28"	100.00'	37.67'	18.31'
C28	14°26'39"	100.00'	25.27'	12.70'
C29	90°38'16"	20.00'	31.64'	20.22'
C30	81°52'57"	15.00'	24.05'	15.60'
C31	28°59'25"	55.00'	27.83'	14.22'
C32	38°34'02"	55.00'	35.10'	18.17'
C33	2°08'28"	55.00'	2.08'	1.03'
C34	1°50'37"	870.00'	14.00'	7.00'
C35	1°58'35"	870.00'	30.01'	15.01'
C36	1°58'35"	870.00'	30.00'	15.00'
C37	2°08'08"	870.00'	32.68'	16.34'
C38	58°46'01"	25.00'	25.68'	14.09'
C39	128°53'55"	18.00'	33.22'	30.02'
C40	0°10'30"	670.00'	3.88'	2.00'
C41	2°34'04"	670.00'	30.03'	15.02'
C42	2°33'57"	670.00'	30.00'	15.00'
C43	2°34'08"	670.00'	30.04'	15.02'
C44	4°00'12"	670.00'	46.81'	23.42'

5-6-81