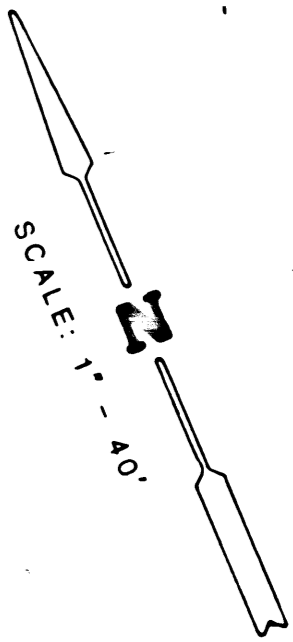
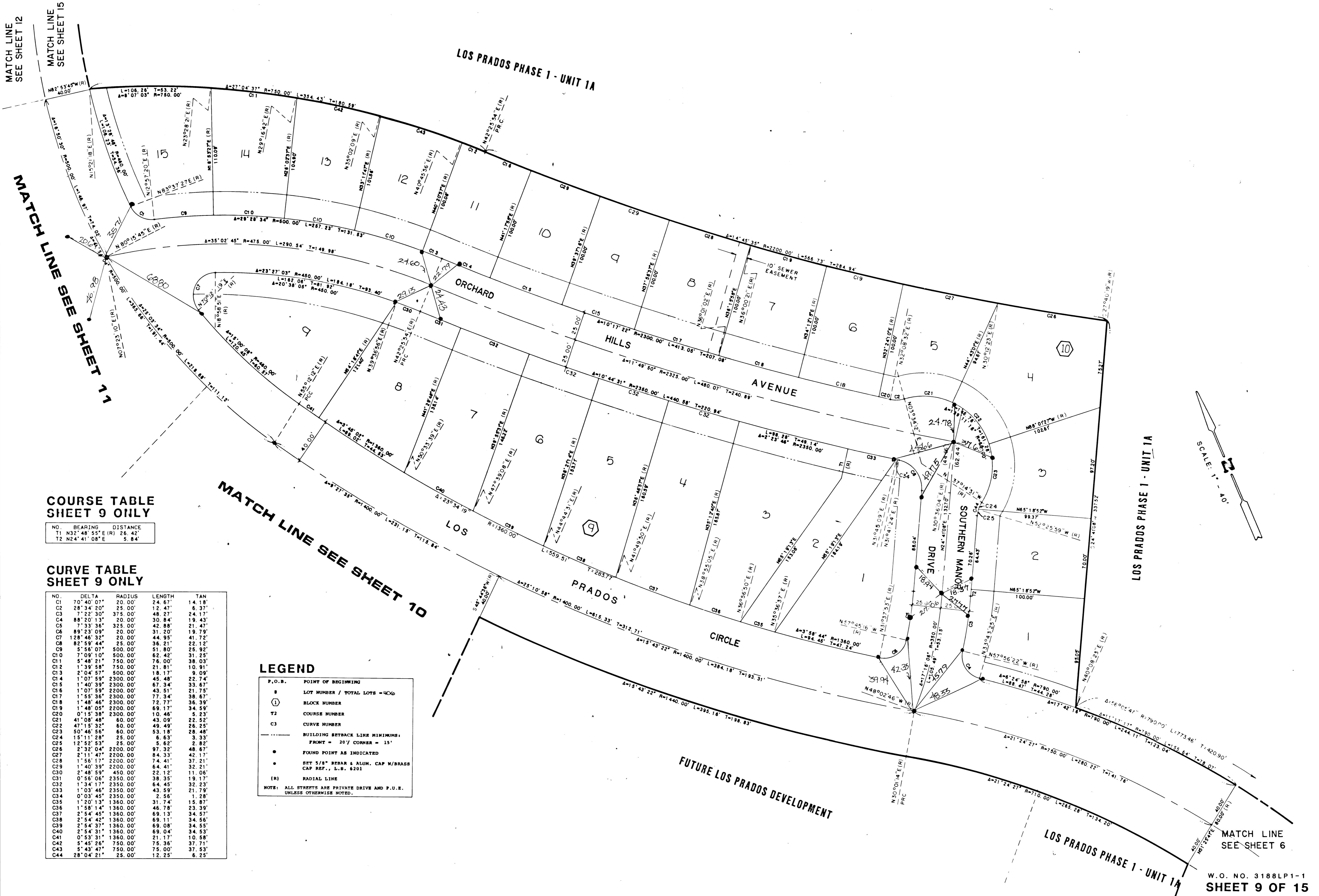


LOS PRADOS PHASE 1 - UNIT 1

A PORTION OF SECTION 36, T. 19 S., R. 60 E., M.D.M., CITY OF LAS VEGAS, CLARK COUNTY, NEVADA.



**COURSE TABLE
SHEET 9 ONLY**

NO.	BEARING	DISTANCE
T1	N32°48'55"E (R)	26.42'
T2	N24°41'08"E	5.84'

**CURVE TABLE
SHEET 9 ONLY**

NO.	DELTA	RADIUS	LENGTH	TAN
C1	70°40'03"	20.00'	24.67'	14.18'
C2	28°34'20"	25.00'	12.47'	6.37'
C3	7°22'30"	375.00'	48.27'	24.17'
C4	88°20'13"	20.00'	30.84'	19.43'
C5	7°33'38"	325.00'	42.88'	21.47'
C6	89°23'09"	20.00'	31.20'	19.79'
C7	128°46'32"	20.00'	44.95'	41.72'
C8	82°59'44"	25.00'	36.21'	22.12'
C9	5°56'07"	500.00'	51.80'	25.92'
C10	7°09'10"	500.00'	62.42'	31.25'
C11	5°48'21"	750.00'	76.00'	38.03'
C12	1°39'58"	750.00'	21.81'	10.91'
C13	2°04'57"	800.00'	18.17'	9.09'
C14	1°07'59"	2300.00'	45.48'	22.74'
C15	1°40'39"	2300.00'	67.34'	33.67'
C16	1°07'59"	2200.00'	43.51'	21.75'
C17	1°55'36"	2300.00'	77.34'	38.67'
C18	1°48'46"	2300.00'	72.77'	36.39'
C19	1°48'05"	2200.00'	69.17'	34.59'
C20	0°15'38"	2300.00'	10.46'	5.29'
C21	41°08'48"	60.00'	43.09'	22.52'
C22	47°15'32"	60.00'	49.49'	26.25'
C23	50°46'56"	60.00'	53.18'	28.48'
C24	15°11'28"	25.00'	6.63'	3.33'
C25	12°52'53"	25.00'	5.62'	2.82'
C26	2°32'04"	2200.00'	97.32'	48.67'
C27	2°11'47"	2200.00'	84.33'	42.17'
C28	1°55'17"	2200.00'	74.41'	37.21'
C29	1°40'39"	2200.00'	64.41'	32.21'
C30	2°48'59"	450.00'	22.12'	11.06'
C31	0°56'06"	2350.00'	38.35'	19.17'
C32	1°34'17"	2350.00'	64.45'	32.23'
C33	1°03'46"	2350.00'	43.59'	21.79'
C34	0°03'45"	2350.00'	2.56'	1.28'
C35	1°20'13"	1360.00'	31.74'	15.87'
C36	1°58'14"	1360.00'	46.78'	23.39'
C37	2°54'45"	1360.00'	69.13'	34.57'
C38	2°54'42"	1360.00'	69.11'	34.56'
C39	2°54'37"	1360.00'	69.08'	34.55'
C40	2°54'31"	1360.00'	69.04'	34.53'
C41	0°53'31"	1360.00'	21.17'	10.58'
C42	5°45'26"	750.00'	75.36'	37.71'
C43	5°43'47"	750.00'	75.00'	37.53'
C44	28°04'21"	25.00'	12.25'	6.25'

LEGEND

- P.O.B. POINT OF BEGINNING
 - LOT NUMBER / TOTAL LOTS = 4000
 - Ⓛ BLOCK NUMBER
 - T2 COURSE NUMBER
 - C3 CURVE NUMBER
 - BUILDING SETBACK LINE MINIMUMS:
FRONT = 20' CORNER = 15'
 - FOUND POINT AS INDICATED
 - SET 5/8" REBAR & ALUM. CAP W/BRASS CAP REF., L.S. 6201
 - (R) RADIAL LINE
- NOTE: ALL STREETS ARE PRIVATE DRIVE AND P.U.E. UNLESS OTHERWISE NOTED.