

LOS PRADOS PHASE 1 - UNIT 1

A PORTION OF SECTION 36, T. 19 S., R. 60 E., M.D.M., CITY OF LAS VEGAS, CLARK COUNTY, NEVADA

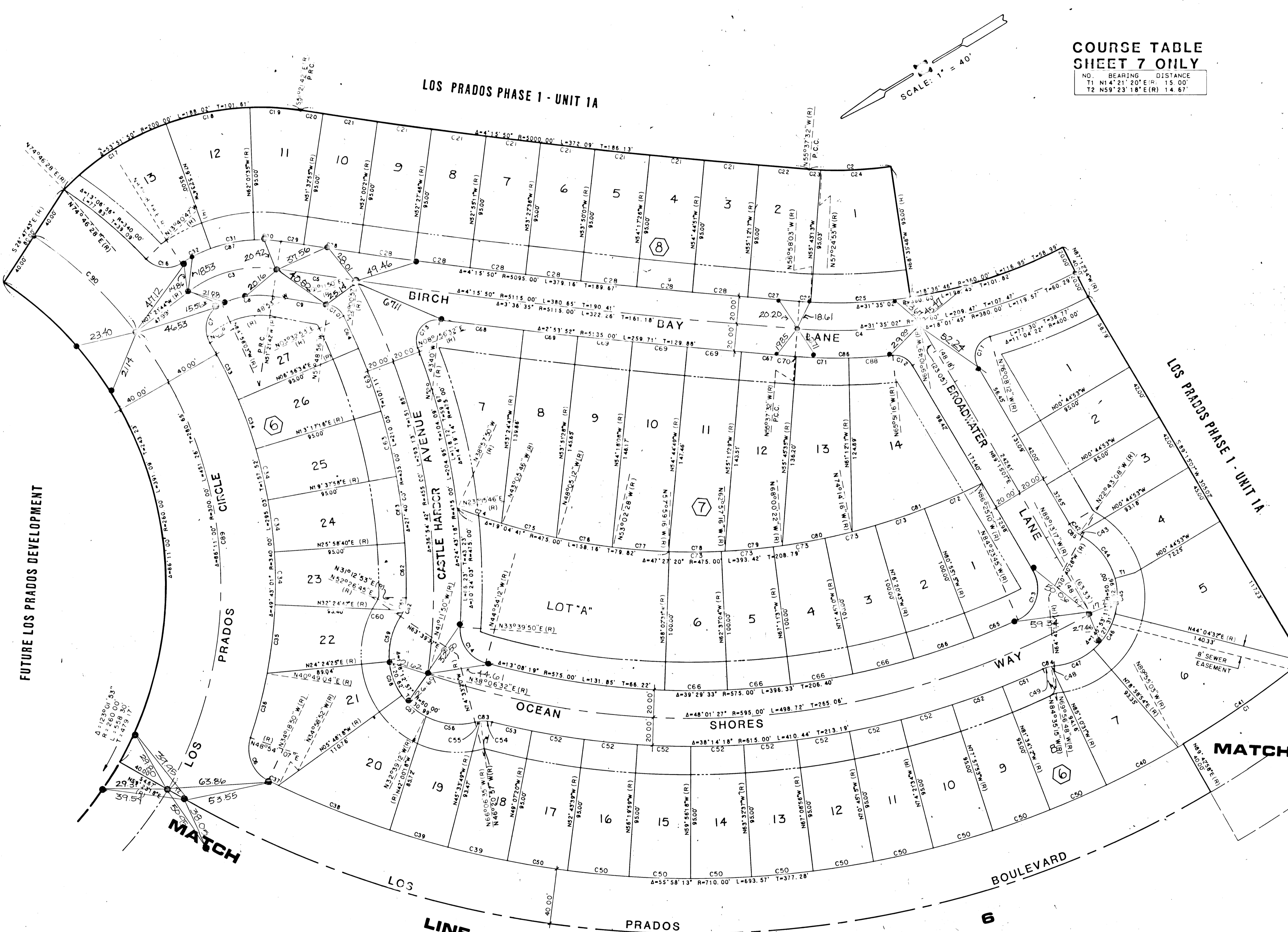
CURVE TABLE
SHEET 7 ONLY

NO.	DELTA	RADIUS	LENGTH	TAN
C1	8°29'29"	110.00	105.22	52.71
C2	12°58'16"	265.00	59.99	30.13
C3	46°00'02"	85.00	68.24	36.06
C4	13°33'17"	380.00	89.90	45.16
C5	0°39'14"	515.00	58.38	29.19
C6	83°12'57"	25.00	36.31	22.20
C7	95°50'50"	20.00	33.46	22.15
C8	33°36'21"	65.00	38.12	20.33
C9	0°27'14"	515.00	40.67	20.33
C10	55°21'49"	15.00	14.49	7.87
C11	104°36'41"	15.00	27.39	19.41
C12	65°06'23"	15.00	17.04	9.58
C13	98°21'08"	25.00	42.04	27.94
C14	78°34'02"	25.00	34.28	20.45
C15	118°19'48"	15.00	30.98	25.13
C16	79°10'35"	20.00	27.64	16.54
C17	25°20'58"	200.00	88.49	44.98
C18	7°50'59"	200.00	62.31	31.41
C19	10°39'53"	200.00	37.23	18.67
C20	0°11'13"	5000.00	16.32	8.16
C21	0°27'25"	5000.00	39.88	19.94
C22	0°25'15"	5000.00	36.73	18.37
C23	1°47'21"	265.00	8.28	4.14
C24	11°10'55"	265.00	51.72	25.94
C25	11°37'45"	265.00	73.07	36.56
C26	1°20'31"	360.00	8.43	4.22
C27	0°25'15"	5095.00	37.43	18.72
C28	0°27'25"	5095.00	40.64	20.32
C29	0°11'13"	5095.00	16.63	8.31
C30	10°39'53"	105.00	19.54	9.80
C31	17°50'59"	105.00	32.71	16.49
C32	12°58'47"	105.00	23.79	11.94
C33	7°45'27"	340.00	46.03	23.55
C34	6°20'42"	340.00	37.65	18.85
C35	8°24'22"	340.00	49.88	24.99
C36	8°05'04"	340.00	47.97	24.03
C37	0°40'02"	710.00	8.21	4.11
C38	7°01'26"	710.00	87.04	43.57
C39	3°33'31"	710.00	44.10	22.06
C40	4°44'31"	710.00	58.76	29.40
C41	8°51'29"	710.00	109.71	54.89
C42	21°58'15"	25.00	9.59	4.85
C43	7°57'21"	25.00	3.47	1.74
C44	45°01'48"	50.00	39.30	20.73
C45	9°43'12"	50.00	9.4	4.73
C46	34°54'22"	50.00	30.46	15.72
C47	36°13'48"	50.00	31.62	16.36
C48	5°09'31"	25.00	2.25	1.13
C49	14°38'27"	25.00	6.39	3.21
C50	3°36'19"	710.00	44.68	22.35
C51	3°01'03"	615.00	32.39	16.20
C52	3°36'19"	615.00	38.70	19.36
C53	2°46'23"	615.00	29.77	14.89
C54	19°45'38"	25.00	8.62	4.35
C55	8°26'45"	25.00	3.69	1.85
C56	41°54'09"	50.00	36.57	19.14
C57	16°50'54"	50.00	23.43	11.93
C58	30°12'43"	50.00	26.36	13.50
C59	39°15'12"	50.00	34.25	17.83
C60	11°12'52"	25.00	4.89	2.45
C61	21°13'52"	25.00	9.26	4.69
C62	5°14'13"	435.00	39.76	19.89
C63	6°20'42"	435.00	48.17	24.11
C64	3°23'41"	435.00	25.77	12.89
C65	3°28'30"	435.00	34.87	17.44
C66	4°34'33"	435.00	45.92	22.97
C67	0°26'03"	5135.00	38.91	19.45
C68	0°41'07"	5135.00	61.43	30.71
C69	0°26'40"	5135.00	39.84	19.84
C70	0°08'03"	400.00	9.4	4.7
C71	5°26'36"	400.00	38.00	19.02
C72	5°29'55"	475.00	45.58	22.81
C73	4°34'33"	475.00	37.93	18.98
C74	4°07'57"	475.00	34.26	17.14
C75	4°59'25"	475.00	41.37	20.70
C76	4°57'16"	475.00	41.07	20.55
C77	4°56'48"	475.00	41.01	20.52
C78	4°58'00"	475.00	41.18	20.60
C79	5°03'06"	475.00	41.88	20.95
C80	6°13'54"	475.00	51.66	25.86
C81	12°10'54"	475.00	100.99	50.69
C82	32°26'44"	25.00	14.16	7.27
C83	28°12'23"	25.00	12.31	6.28
C84	19°47'51"	25.00	8.84	4.38
C85	29°55'35"	25.00	13.06	6.68
C86	10°13'44"	400.00	71.41	35.80
C87	41°29'39"	105.00	76.04	39.77
C88	04°59'03"	400.00	32.00	16.25
C89	66°45'01"	300.00	349.50	197.63
C90	19°25'59"	300.00	101.75	51.37

COURSE TABLE
SHEET 7 ONLY

NO.	BEARING	DISTANCE
T1	N14°21'20"E (R)	15.00'
T2	N59°23'18"E (R)	14.67'

SCALE: 1" = 40'



MATCH LINE SEE SHEET 8

LEGEND

P.O.B.	POINT OF BEGINNING
B	LOT NUMBER / TOTAL LOTS = 400
Ⓚ	BLOCK NUMBER
T2	COURSE NUMBER
C3	CURVE NUMBER
---	BUILDING SETBACK LINE MINIMUMS: FRONT = 20' CORNER = 15'
○	FOUND POINT AS INDICATED
●	SET 5/8" RRBAR & ALUM. CAP W/BRASS CAP REF., L.E. 6201
(R)	RADIAL LINE

NOTE: ALL STREETS ARE PRIVATE DRIVE AND P.U.E. UNLESS OTHERWISE NOTED.

FUTURE LOS PRADOS DEVELOPMENT

SEE SHEET 6

5-6-77