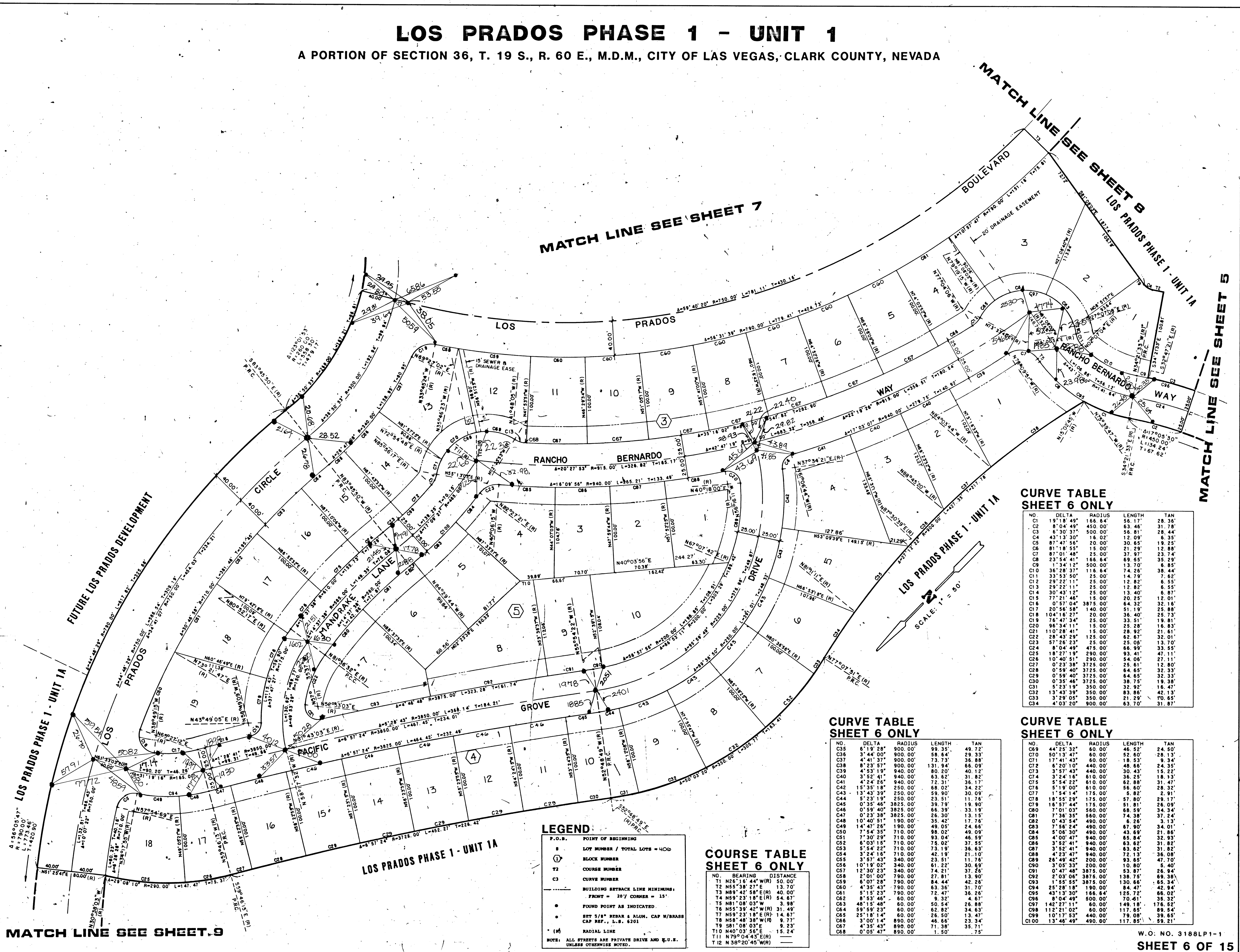


LOS PRADOS PHASE 1 - UNIT 1

A PORTION OF SECTION 36, T. 19 S., R. 60 E., M.D.M., CITY OF LAS VEGAS, CLARK COUNTY, NEVADA



MATCH LINE SEE SHEET 7

MATCH LINE SEE SHEET 8
LOS PRADOS PHASE 1 - UNIT 1A

MATCH LINE SEE SHEET 5

MATCH LINE SEE SHEET 9

CURVE TABLE SHEET 6 ONLY

NO.	DELTA	RADIUS	LENGTH	TAN
C1	19° 18' 49"	166.64	56.17	28.36
C2	8° 04' 49"	450.00	63.46	31.78
C3	6° 30' 47"	500.00	66.81	28.44
C4	43° 13' 30"	16.02	12.09	6.35
C5	87° 47' 56"	20.00	30.65	19.25
C6	81° 15' 55"	15.00	21.29	12.88
C7	87° 01' 48"	25.00	37.97	23.74
C8	23° 54' 41"	166.64	69.55	35.29
C9	1° 34' 12"	500.00	13.70	6.85
C10	36° 28' 37"	116.64	74.25	38.44
C11	33° 53' 50"	25.00	14.79	7.62
C12	29° 22' 11"	25.00	12.82	6.55
C13	29° 22' 11"	25.00	12.82	6.55
C14	30° 42' 12"	25.00	13.40	6.87
C15	77° 21' 46"	15.00	20.25	12.01
C16	0° 57' 04"	3875.00	64.32	32.16
C17	20° 58' 58"	140.00	51.19	25.86
C18	104° 16' 27"	20.00	36.40	25.73
C19	76° 47' 34"	25.00	33.51	19.81
C20	96° 34' 11"	15.00	25.28	16.83
C21	110° 28' 41"	15.00	28.92	21.61
C22	28° 43' 29"	125.00	62.67	32.01
C23	57° 26' 23"	25.00	25.06	13.70
C24	8° 04' 49"	475.00	68.99	33.55
C25	181° 21' 19"	290.00	83.41	47.11
C26	10° 40' 51"	290.00	54.06	27.11
C27	0° 23' 38"	3725.00	25.61	12.80
C28	0° 52' 40"	3725.00	36.25	32.33
C29	0° 59' 40"	3725.00	64.65	32.33
C30	0° 35' 46"	3725.00	38.75	19.38
C31	5° 23' 19"	350.00	32.92	16.47
C32	13° 42' 39"	350.00	63.85	42.33
C33	3° 29' 05"	350.00	21.29	10.65
C34	4° 03' 20"	900.00	63.70	31.87

CURVE TABLE SHEET 6 ONLY

NO.	DELTA	RADIUS	LENGTH	TAN
C35	6° 19' 28"	900.00	99.35	49.72
C36	3° 44' 00"	900.00	58.64	29.33
C37	4° 41' 37"	900.00	73.73	36.88
C38	8° 23' 57"	900.00	131.94	66.09
C39	4° 53' 19"	940.00	80.20	40.12
C40	3° 52' 41"	940.00	63.62	31.82
C41	4° 24' 26"	940.00	72.31	36.17
C42	15° 35' 18"	250.00	68.02	34.22
C43	13° 43' 39"	250.00	59.90	30.09
C44	8° 23' 19"	250.00	23.51	11.76
C45	0° 35' 46"	3825.00	39.79	19.90
C46	0° 59' 40"	3825.00	66.39	33.19
C47	0° 23' 38"	3825.00	26.30	13.15
C48	10° 40' 51"	190.00	35.42	17.76
C49	14° 47' 26"	190.00	49.05	24.66
C50	7° 54' 35"	710.00	98.02	49.09
C51	7° 30' 29"	710.00	93.04	46.59
C52	6° 03' 15"	710.00	75.02	37.55
C53	5° 54' 22"	710.00	73.19	36.63
C54	3° 24' 16"	710.00	42.19	21.10
C55	3° 57' 43"	340.00	23.51	11.76
C56	10° 19' 02"	340.00	61.22	30.69
C57	12° 30' 23"	340.00	74.21	37.26
C58	2° 01' 00"	790.00	27.81	13.90
C59	6° 07' 28"	790.00	84.44	42.35
C60	4° 35' 43"	790.00	63.36	31.70
C61	5° 15' 23"	790.00	72.47	36.26
C62	3° 00' 14"	890.00	46.66	23.34
C63	48° 15' 48"	60.00	50.54	26.88
C64	59° 59' 23"	60.00	62.82	34.63
C65	25° 18' 14"	60.00	26.50	13.47
C66	3° 00' 14"	890.00	46.66	23.34
C67	4° 35' 43"	890.00	71.38	35.71
C68	0° 05' 47"	890.00	1.50	.75

CURVE TABLE SHEET 6 ONLY

NO.	DELTA	RADIUS	LENGTH	TAN
C69	44° 25' 32"	60.00	46.52	24.50
C70	50° 13' 47"	60.00	52.60	28.13
C71	17° 41' 43"	60.00	18.53	9.34
C72	6° 20' 10"	440.00	48.66	24.35
C73	3° 57' 43"	440.00	30.43	15.22
C74	3° 52' 41"	610.00	36.25	18.13
C75	5° 54' 22"	610.00	62.88	31.37
C76	5° 19' 00"	610.00	56.60	28.32
C77	1° 54' 14"	175.00	5.82	2.91
C78	18° 42' 39"	175.00	57.80	29.17
C79	16° 57' 44"	175.00	51.81	26.09
C80	7° 01' 03"	560.00	68.59	34.34
C81	7° 36' 35"	560.00	74.38	37.24
C82	0° 43' 54"	490.00	83.86	41.93
C83	7° 56' 24"	490.00	67.90	34.01
C84	5° 06' 30"	490.00	43.69	21.86
C85	4° 00' 37"	3875.00	63.80	31.82
C86	3° 52' 41"	940.00	63.62	31.82
C87	3° 52' 41"	940.00	63.62	31.82
C88	4° 23' 47"	940.00	72.13	36.08
C89	28° 49' 42"	200.00	93.85	47.70
C90	3° 05' 33"	200.00	10.80	5.40
C91	0° 47' 48"	3875.00	53.87	26.94
C92	2° 03' 06"	3875.00	138.75	69.38
C93	1° 55' 35"	3875.00	130.66	65.34
C94	25° 28' 18"	190.00	84.47	42.94
C95	43° 13' 30"	166.64	125.72	66.02
C96	8° 04' 49"	500.00	70.41	36.32
C97	11° 52' 11"	60.00	149.18	76.62
C98	112° 21' 02"	60.00	117.65	89.54
C99	10° 17' 53"	440.00	79.08	39.65
C100	13° 46' 49"	490.00	117.85	59.21

LEGEND

P.O.B. POINT OF BEGINNING

① LOT NUMBER / TOTAL LOTS = 400

② BLOCK NUMBER

③ CURVE NUMBER

--- BUILDING SETBACK LINE MINIMUMS
FRONT = 20' CORNER = 15'

• FOUND POINT AS INDICATED

• BPT 5/8" REBAR & ALUM. CAP W/BRASS CAP REF. L.S. 6201

(M) RADIAL LINE

NOTE: ALL STREETS ARE PRIVATE DRIVE AND U.S. UNLESS OTHERWISE NOTED.

COURSE TABLE SHEET 6 ONLY

NO.	BEARING	DISTANCE
T1	N26°16'44"W(R)	50.00'
T2	N55°30'27"E	13.70'
T3	N89°42'58"E(R)	40.00'
T4	N59°23'18"E(R)	54.87'
T5	N81°08'03"W	3.98'
T6	N55°39'42"W(R)	31.49'
T7	N59°23'18"E(R)	14.87'
T8	N58°48'38"W(R)	9.77'
T9	S81°08'03"E	9.23'
T10	N40°03'56"E	15.24'
T11	N79°04'43"E(R)	
T12	N38°20'45"W(R)	

5-6-76
BK 34 PG 1
058-2037-1-1