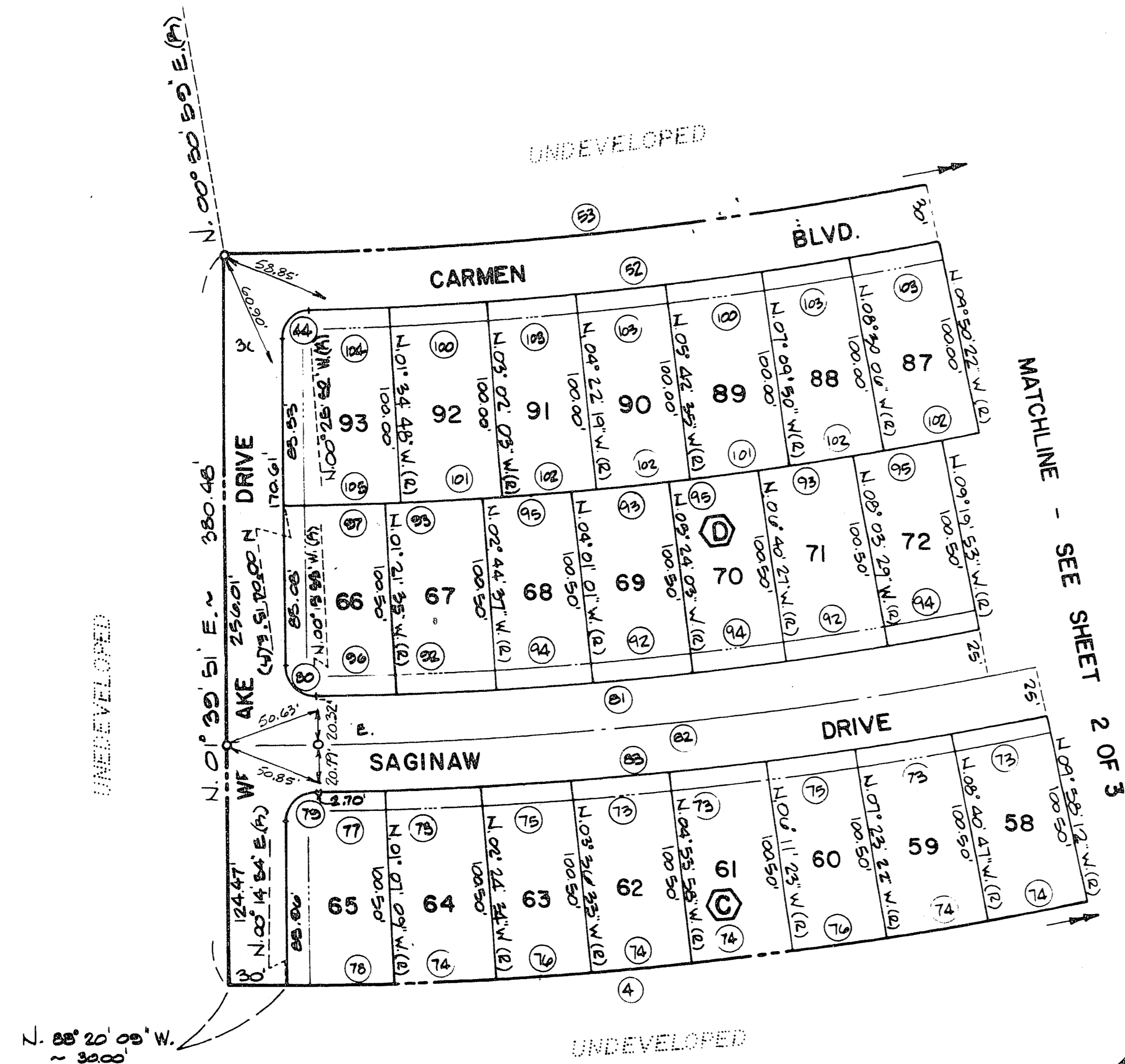


LEWIS HOMES - RAINBOW VISTA NO. - I

BEING A PORTION OF THE (NE 1/4) OF SECTION 26, T. 20 S. R. 60 E. M.D.M.
CITY OF LAS VEGAS, CLARK COUNTY, NEVADA



CURVE DATA

NO.	Δ	R	L	T
3	04° 17' 50"	1753.23	131.54'	69.80'
5	52° 08' 22"	45.80'	41.41'	22.20'
6	44° 44' 50"	45.80'	58.56'	18.75'
7	02° 08' 55"	45.80'	49.95'	27.02'
8	07° 51' 57"	45.80'	6.25'	3.15'
9	28° 08' 50"	80.00'	24.57'	2.34'
10	117° 50' 44"	15.00'	30.85'	24.85'
11	58° 14' 52"	50.00'	39.98'	17.34'
2	72° 00' 13"	15.00'	10.24'	11.20'
3	15° 40' 41"	647.25'	177.11'	89.11'
4	08° 08' 35"	647.25'	91.99'	46.07'
5	07° 32' 06"	647.25'	86.72'	42.62'
6	02° 49' 06"	15.00'	25.78'	15.22'
7	05° 10' 56"	15.00'	25.95'	14.75'
8	6° 55' 45"	672.25'	198.65'	100.04'
9	6° 55' 45"	672.25'	204.02'	103.76'
20	02° 13' 05"	697.25'	24.95'	16.20'
21	05° 11' 26"	697.25'	65.17'	31.60'
22	04° 15' 48"	697.25'	52.45'	28.36'
23	07° 51' 28"	45.80'	55.66'	28.47'
24	38° 08' 05"	45.80'	50.28'	3.73'
25	0° 30' 01"	45.80'	87.75'	65.98'
26	25° 29' 44"	45.80'	203.69'	—
27	25° 37' 28"	50.00'	22.36'	11.37'
28	12° 37' 24"	50.00'	11.02'	5.55'
29	02° 32' 40"	608.25'	85.05'	42.55'
30	09° 41' 41"	15.00'	27.41'	8.44'
31	78° 07' 10"	13.00'	23.05'	12.17'
32	01° 23' 36"	608.25'	31.33'	15.66'
33	02° 45' 26"	808.00'	42.98'	21.50'
34	01° 24' 44"	758.25'	44.23'	22.12'
35	56° 24' 08"	15.00'	25.07'	17.25'
36	87° 45' 01"	15.00'	22.25'	14.44'
37	02° 10' 58"	808.00'	34.10'	17.05'
38	05° 37' 04"	925.00'	36.08'	49.05'
39	02° 24' 23"	1723.25'	43.95'	3.66'
40	04° 49' 14"	1723.25'	44.98'	72.55'
41	00° 55' 37"	1723.25'	288.34'	104.20'
44	87° 56' 7"	15.00'	23.01'	14.46'
52	18° 50' 23"	1970.00'	647.77'	324.83'
53	20° 07' 13"	1940.00'	681.21'	344.8'
57	107° 44' 51"	5.00'	28.21'	20.55'
58	72° 15' 08"	15.00'	18.82'	10.55'
60	05° 07' 23"	15.00'	18.82'	10.55'
61	72° 4' 34"	15.00'	18.82'	10.55'
62	00° 55' 32"	1723.25'	19.88'	9.92'
63	05° 09' 37"	608.25'	30.44'	49.23'
65	23° 53' 34"	60.00'	31.31'	16.02'
66	30° 01' 27"	60.00'	31.44'	16.09'
67	01° 25' 32"	2321.00'	59.77'	29.85'
68	23° 09' 57"	50.00'	20.22'	10.25'
69	00° 52' 10"	50.00'	0.76'	0.38'

CURVE DATA

NO.	Δ	R	L	T
70	24° 02' 07"	50.00'	22.88'	0.44'
71	01° 10' 49"	2220.50'	45.74'	22.87'
72	00° 21' 19"	2321.00'	14.39'	7.20'
73	01° 17' 25"	2220.50'	50.01'	25.00'
74	01° 17' 25"	2321.00'	52.47'	26.14'
75	01° 11' 59"	2220.50'	46.50'	23.25'
76	01° 11' 59"	2321.00'	48.60'	24.30'
77	00° 51' 14"	2220.50'	35.09'	16.55'
78	01° 21' 42"	2321.00'	55.17'	27.59'
79	55° 05' 01"	5.00'	23.06'	14.20'
80	5° 35' 46"	15.00'	24.07'	15.3'
81	17° 50' 43"	2170.20'	674.02'	340.77'
82	18° 40' 21"	2195.50'	721.8'	349.87'
83	7° 05' 10"	2220.50'	604.55'	324.93'
84	73° 21' 46"	25.00'	32.03'	5.64'
85	06° 37' 31"	50.00'	4.07'	3.04'
86	24° 37' 21"	50.00'	21.45'	0.21'
87	17° 39' 41"	50.00'	15.41'	7.77'
88	32° 36' 10"	50.00'	34.49'	17.74'
89	22° 45' 25"	50.00'	12.58'	05.95'
90	00° 41' 49"	2170.50'	26.40'	13.20'
91	02° 02' 47"	2070.00'	73.93'	36.97'
92	01° 23' 02"	2170.50'	32.43'	26.21'
93	01° 23' 02"	2070.00'	50.00'	25.00'
94	01° 16' 24"	2170.50'	48.24'	24.12'
95	01° 16' 24"	2070.00'	46.00'	23.00'
96	01° 16' 24"	2170.50'	41.44'	20.75'
97	01° 25' 48"	2070.00'	51.66'	25.83'
98	01° 14' 41"	2070.00'	44.97'	22.45'
99	01° 03' 20"	1970.00'	36.29'	18.15'
100	01° 27' 15"	970.00'	50.00'	25.00'
101	01° 27' 15"	2070.00'	52.54'	26.27'
102	01° 20' 16"	2070.00'	48.33'	24.17'
103	01° 20' 16"	970.00'	46.00'	23.00'
104	01° 08' 56"	970.00'	39.50'	19.75'
105	01° 39' 01"	2070.00'	59.62'	29.81'
4	15° 30' 40"	2321.00'	79.66'	39.51'
58	00° 10' 57"	608.25'	3.36'	2.70'
108	04° 52' 10"	925.00'	78.6'	39.33'
109	0° 45' 14"	925.00'	74.65'	87.61'
170	0° 45' 41"	955.00'	180.36'	90.46'

- LEGEND**
- 69 LOT NUMBER
 - (2) BLOCK NUMBER
 - SETBACKS:
 - 20' MIN. FRONT YARD (R-1)
 - 15' MIN. SIDEYARD CORNER (R-1)
 - 16' MIN. FRONT YARD (RCL)
 - 10' MIN. SIDEYARD CORNER (RCL)
 - (25) CURVE NUMBER
 - FND. MON. AS SHOWN
 - SET NAIL & BRASS TAG R.L.S. 2050 W/B.C. REF. TIES SET IN TOP OF CURB
 - LEGAL BOUNDARY

MONUMENT TIE MAP

