

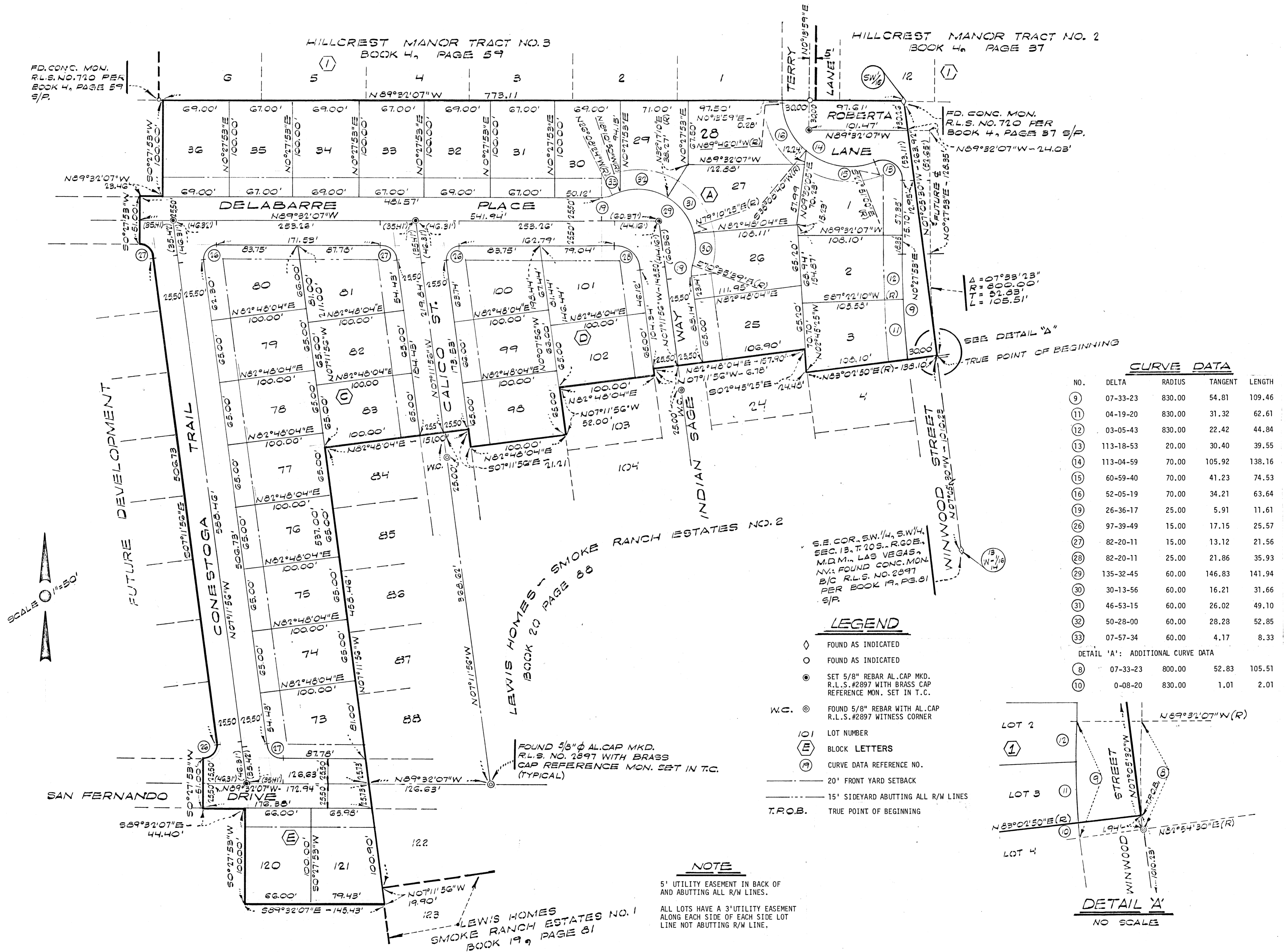
# LEWIS HOMES - SMOKE RANCH ESTATES NO. 4

A PORTION OF THE SW 1/4 OF THE SW 1/4 OF SECTION 13, T20S., R60E., M.D.M., CITY OF LAS VEGAS, CLARK COUNTY, NV.

FD. CONC. MON.  
R.L.S. NO. 710 PER  
BOOK 4, PAGE 59  
S/P.

HILLCREST MANOR TRACT NO. 3  
BOOK 4, PAGE 59

HILLCREST MANOR TRACT NO. 2  
BOOK 4, PAGE 37



Δ = 07°33'23"  
R = 800.00'  
T = 52.83'  
L = 105.51'

SEE DETAIL "A"  
TRUE POINT OF BEGINNING

### CURVE DATA

NO.	DELTA	RADIUS	TANGENT	LENGTH
9	07-33-23	830.00	54.81	109.46
11	04-19-20	830.00	31.32	62.61
12	03-05-43	830.00	22.42	44.84
13	113-18-53	20.00	30.40	39.55
14	113-04-59	70.00	105.92	138.16
15	60-59-40	70.00	41.23	74.53
16	52-05-19	70.00	34.21	63.64
19	26-36-17	25.00	5.91	11.61
26	97-39-49	15.00	17.15	25.57
27	82-20-11	15.00	13.12	21.56
28	82-20-11	25.00	21.86	35.93
29	135-32-45	60.00	146.83	141.94
30	30-13-56	60.00	16.21	31.66
31	46-53-15	60.00	26.02	49.10
32	50-28-00	60.00	28.28	52.85
33	07-57-34	60.00	4.17	8.33

### DETAIL 'A': ADDITIONAL CURVE DATA

8	07-33-23	800.00	52.83	105.51
10	0-08-20	830.00	1.01	2.01

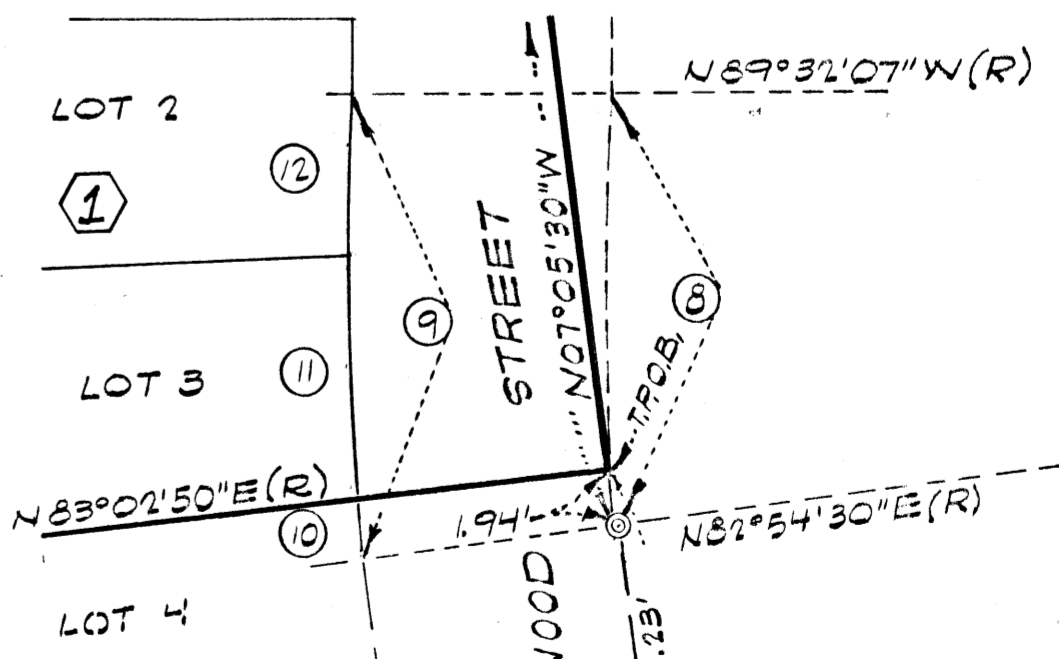
S.E. COR., SW 1/4, SW 1/4,  
SEC. 13, T. 20S., R. 60E.,  
M.D.M., LAS VEGAS,  
NV.; FOUND CONC. MON.  
B/C R.L.S. NO. 2397  
PER BOOK 19, PAGE 81  
S/P.

### LEGEND

- ◇ FOUND AS INDICATED
- FOUND AS INDICATED
- SET 5/8" REBAR AL. CAP MKD.  
R.L.S. #2897 WITH BRASS CAP  
REFERENCE MON. SET IN T.C.
- W.C. ● FOUND 5/8" REBAR WITH AL. CAP  
R.L.S. #2897 WITNESS CORNER
- 101 LOT NUMBER
- ⓔ BLOCK LETTERS
- Ⓜ CURVE DATA REFERENCE NO.
- 20' FRONT YARD SETBACK
- 15' SIDEYARD ABUTTING ALL R/W LINES
- T.P.O.B. TRUE POINT OF BEGINNING

### NOTE

5' UTILITY EASEMENT IN BACK OF  
AND ABUTTING ALL R/W LINES.  
ALL LOTS HAVE A 3' UTILITY EASEMENT  
ALONG EACH SIDE OF EACH SIDE LOT  
LINE NOT ABUTTING R/W LINE.



DETAIL 'A'  
NO SCALE

5-6-176