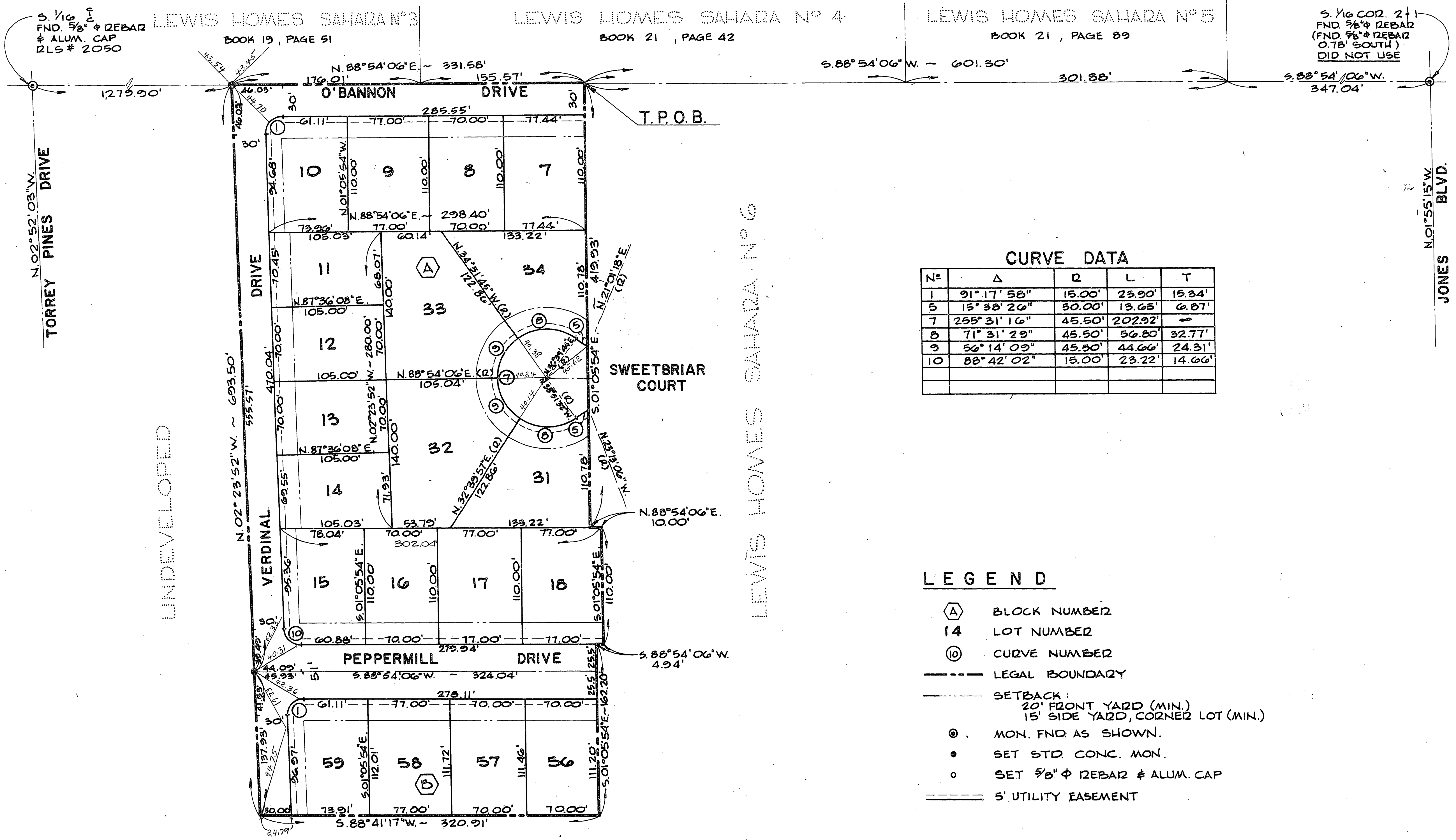


LEWIS HOMES - SAHARA NO. 7

MONUMENT TIE MAP 1022107
 (ALL TIE POINTS ARE LEAD & BRASS NAIL IN T.C.)
 SHEET 1 OF 2

A PORTION OF THE S.E. 1/4 OF SECT. 2, T.21 S., R.60E., M.D.M.,
 CITY OF LAS VEGAS, CLARK COUNTY, NEVADA

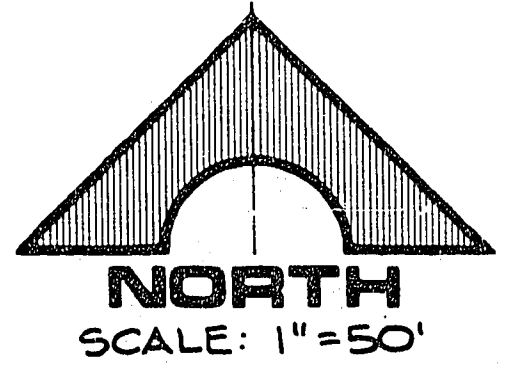


CURVE DATA

N ^o	Δ	R	L	T
1	91° 17' 58"	15.00'	23.90'	15.34'
5	15° 38' 26"	50.00'	13.65'	6.87'
7	255° 31' 16"	45.50'	202.92'	—
8	71° 31' 29"	45.50'	56.80'	32.77'
9	56° 14' 09"	45.50'	44.66'	24.31'
10	88° 42' 02"	15.00'	23.22'	14.66'

- LEGEND**
- Ⓐ BLOCK NUMBER
 - 14 LOT NUMBER
 - ⓪ CURVE NUMBER
 - LEGAL BOUNDARY
 - SETBACK:
20' FRONT YARD (MIN.)
15' SIDE YARD, CORNER LOT (MIN.)
 - ⊙ MON. FND AS SHOWN.
 - SET STD. CONC. MON.
 - SET 3/8" φ REBAR & ALUM. CAP
 - 5' UTILITY EASEMENT

BASIS OF BEARING
 N. 88° 54' 06" E., BEING THE BEARING OF THE SOUTH LINE OF THE NORTHWEST QUARTER (NW 1/4) OF THE SOUTHEAST QUARTER (SE 1/4) OF SECTION 2, T. 21 S., R. 60 E., M. D. M., AS SHOWN BY A PLAT OF LEWIS HOMES - SAHARA UNIT N^o 2 ON FILE IN THE CLARK COUNTY, NEVADA RECORDER'S OFFICE AS PAGE 50, BOOK 10 OF PLATS.



SURVEYOR'S CERTIFICATE
 THIS IS TO CERTIFY THAT THE MONUMENTS HAVE BEEN SET AND TIES ESTABLISHED AS SHOWN HEREON.
Kay L. Adams
 KAY L. ADAMS RLS NO. 2050