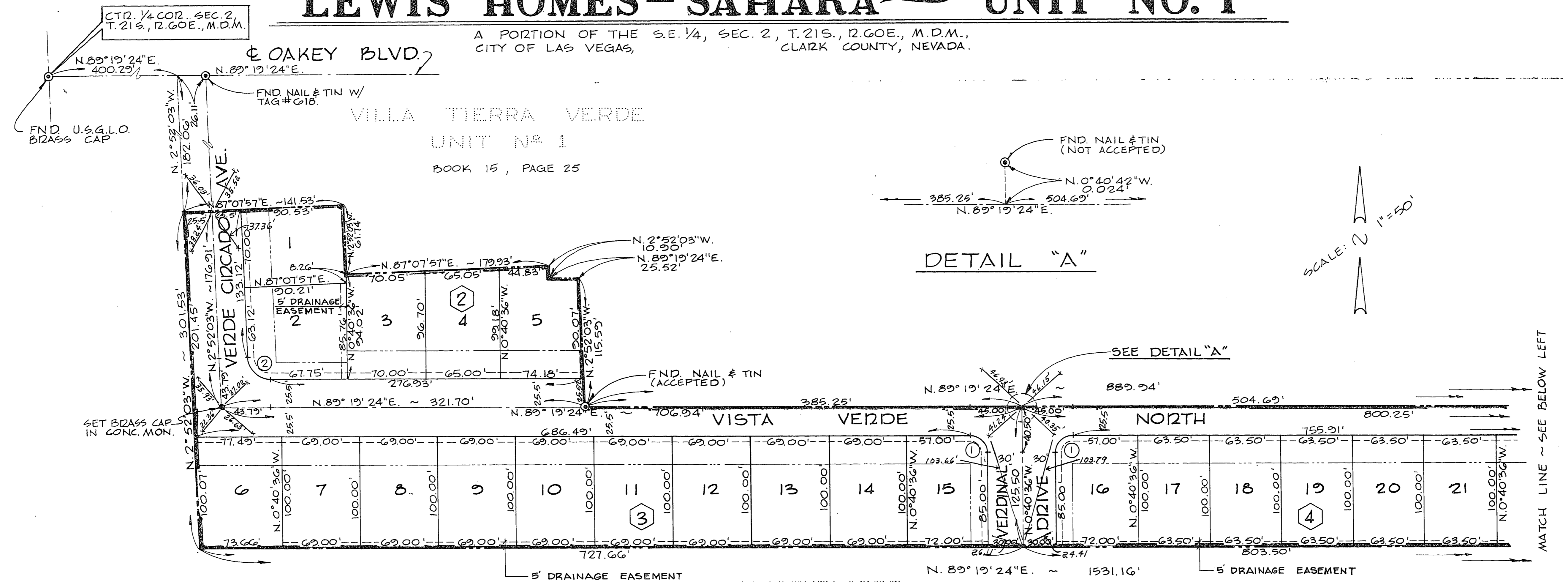


LEWIS HOMES - SAHARA - UNIT NO. 1

A PORTION OF THE S.E. 1/4, SEC. 2, T. 21S., R. 60E., M.D.M.,
CITY OF LAS VEGAS, CLARK COUNTY, NEVADA.



DETAIL "A"

DETAIL "B"

LEGEND

- ④ BLOCK NUMBER
- 27 LOT NUMBER
- ③ CURVE NUMBER
- 5' UTILITY EASEMENT
- FRONT YARD SETBACK;
SIDE YARD SETBACK.
- ⊙ MONUMENT FOUND AS INDICATED
- MONUMENT SET AS INDICATED.
- + SET LEAD & BRASS PIN IN TOP OF CURB

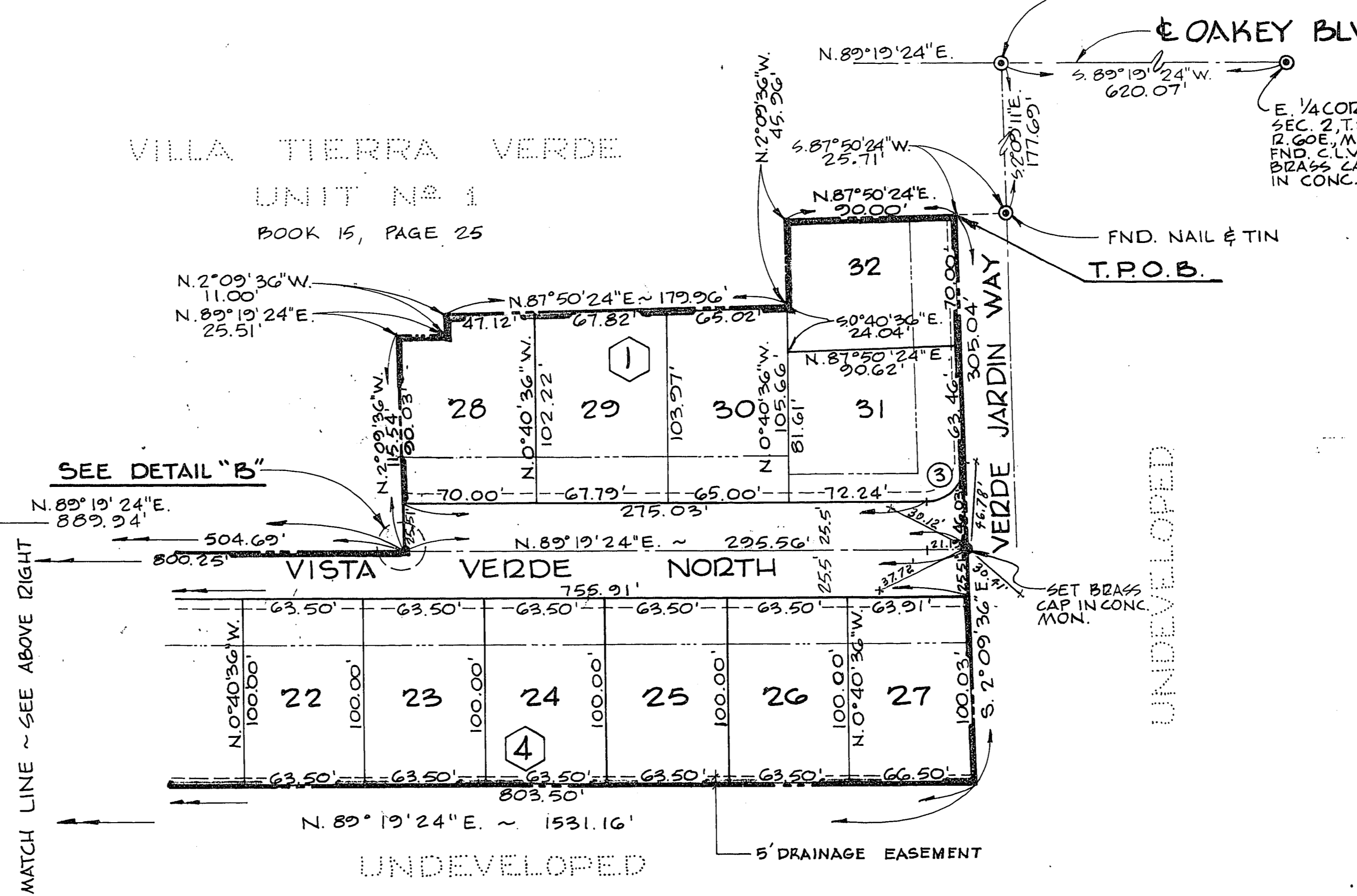
CURVE DATA

N ^o	Δ	L	T
1	20°00'00"	15.00'	23.50'
2	87°48'33"	20.00'	30.65'
3	91°29'00"	20.00'	31.93'

BASIS OF BEARING

N. 89° 19' 24" E. BEING THE BEARING OF THE QUARTER (1/4) SECTION LINE OF SECTION 2, T. 21S., R. 60E., M.D.M. AS SHOWN BY MAP ON FILE IN THE OFFICE OF THE CLARK COUNTY, NEVADA RECORDER AS BOOK 15, PAGE 25 OF PLATS.

Paul I. Bolen
PAUL I. BOLEN R.L.S.
NEV. CERT. NO. 4232



MATCH LINE ~ SEE ABOVE RIGHT

MATCH LINE ~ SEE BELOW LEFT

MONUMENT MAP