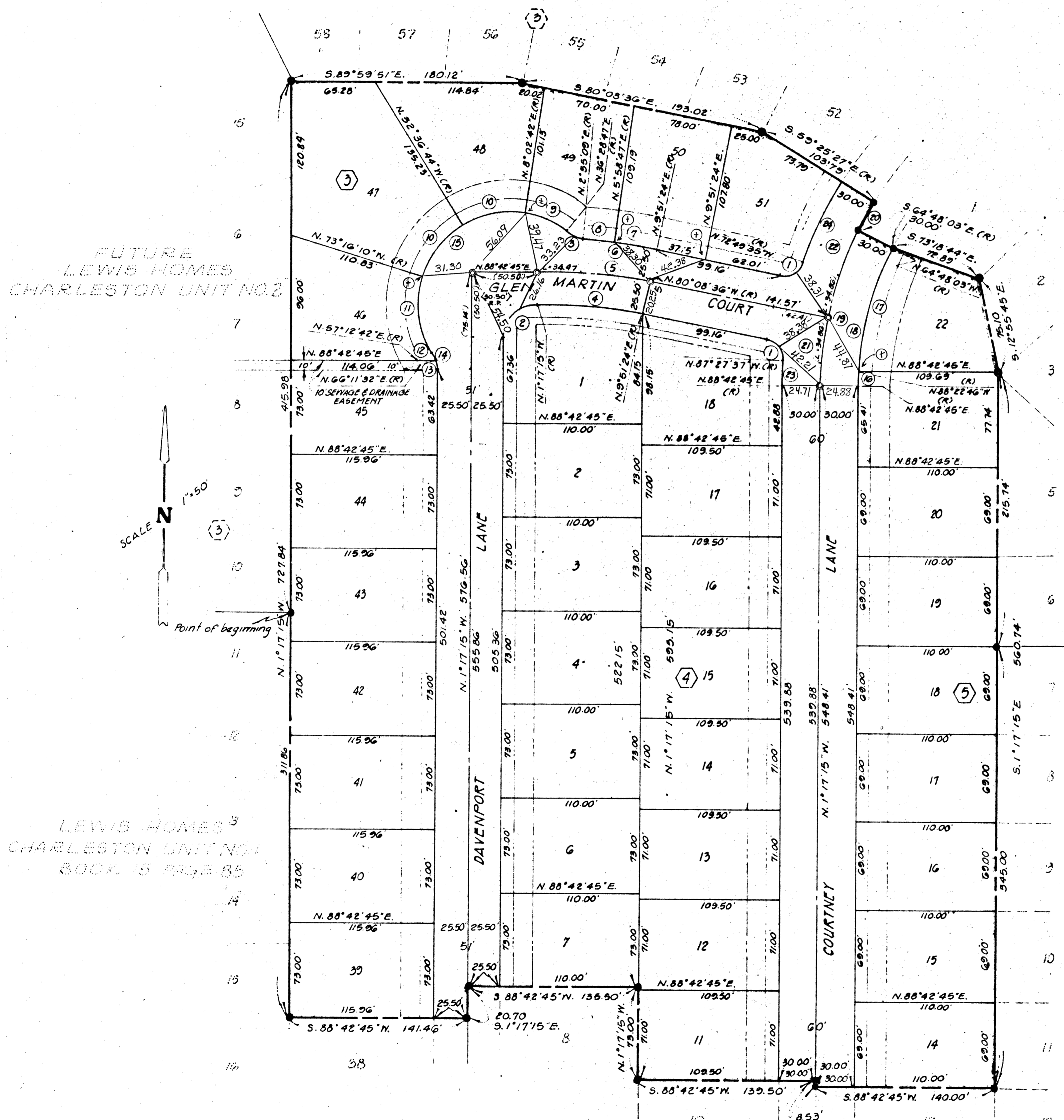


LEWIS HOMES - CHARLESTON UNIT NO. 7

BEING A SUBDIVISION WITHIN A PORTION OF
THE N.W. 1/4 OF SEC. 35, T.20S., R.60E., M.D.M.
CITY OF LAS VEGAS, CLARK COUNTY, NEVADA



FUTURE
LEWIS HOMES
CHARLESTON UNIT NO. 2

LEWIS HOMES
CHARLESTON UNIT NO. 1
BOOK 15 PAGE 85

LEWIS HOMES CHARLESTON
UNIT NO. 6
BOOK 16 PAGE 80

Legend

- Point Found as shown, per LEWIS HOMES CHARLESTON UNIT NO. 6; UNIT NO. 5 UNIT NO. 1
- Set 5/8" Rebar w/ Alum. Cap
- Stamped RLS 3393-3546 2897
- 5 Lot Number
- Block Number
- Blgd. Setback Line
- 25' Front Yard, 15' Side Yard
- Abutting R/W
- 5' Utility Easement in back of and Abutting All R/W Lines (SHOWN NOT TO SCALE)
- Ⓢ Curve Data Number

NOTES

- 3' Utility Easement on Each Side of Each Side Lot Line Not Abutting R/W

AMENDED
LEWIS HOMES
CHARLESTON
UNIT NO. 5
BK. 16 PG. 72

CURVE DATA

NO.	Δ	RAD.	TAN.	CHD.	LT.
1	82° 40' 59"	15.00'	13.20'	19.82'	21.05'
2	90° 00' 00"	25.00'	25.00'	35.36'	39.27'
3	83° 33' 38"	25.00'	7.54'	14.44'	14.64'
4	11° 08' 39"	444.01'	43.32'	86.22'	86.96'
5	11° 08' 39"	429.51'	45.80'	91.18'	91.32'
6	06° 56' 15"	495.01'	30.01'	59.90'	59.94'
7	03° 32' 37"	495.01'	16.75'	33.49'	33.50'
8	03° 03' 38"	495.01'	13.22'	26.44'	26.44'
9	28° 26' 05"	70.00'	17.74'	34.38'	34.74'
10	40° 39' 26"	70.00'	25.93'	40.64'	49.67'
11	40° 31' 08"	70.00'	32.28'	58.63'	60.50'
12	08° 58' 50"	25.00'	1.96'	3.91'	3.92'
13	22° 31' 13"	25.00'	4.98'	9.76'	9.83'
14	31° 30' 03"	25.00'	7.05'	13.57'	13.75'
15	159° 16' 05"	70.00'	302.06'	137.72'	134.66'
16	02° 54' 29"	243.00'	6.17'	12.33'	12.34'
17	23° 34' 43"	243.00'	50.72'	99.30'	100.00'
18	26° 29' 12"	243.00'	57.19'	111.84'	112.34'
19	26° 29' 12"	273.00'	64.25'	125.08'	126.20'
20	05° 22' 36"	273.00'	12.82'	25.61'	25.62'
21	11° 08' 39"	273.00'	26.63'	53.02'	53.10'
22	20° 43' 09"	273.00'	49.91'	98.18'	98.72'
23	03° 49' 38"	303.00'	10.12'	20.24'	20.24'
24	13° 24' 08"	303.00'	35.60'	70.71'	70.88'

1. CONCRETE NAILS AT CURB RETURNS
2. + IN TOP OF CURB AT FRONT 12'S
3. ALL TIES ARE TO NAILS IN TOP OF CURB UNLESS SHOWN OTHERWISE

⊕ TIE SHEET

56-150