

AMENDED PLAT OF LEWIS HOMES - CHARLESTON UNIT NO. 5 & Tie Sheet

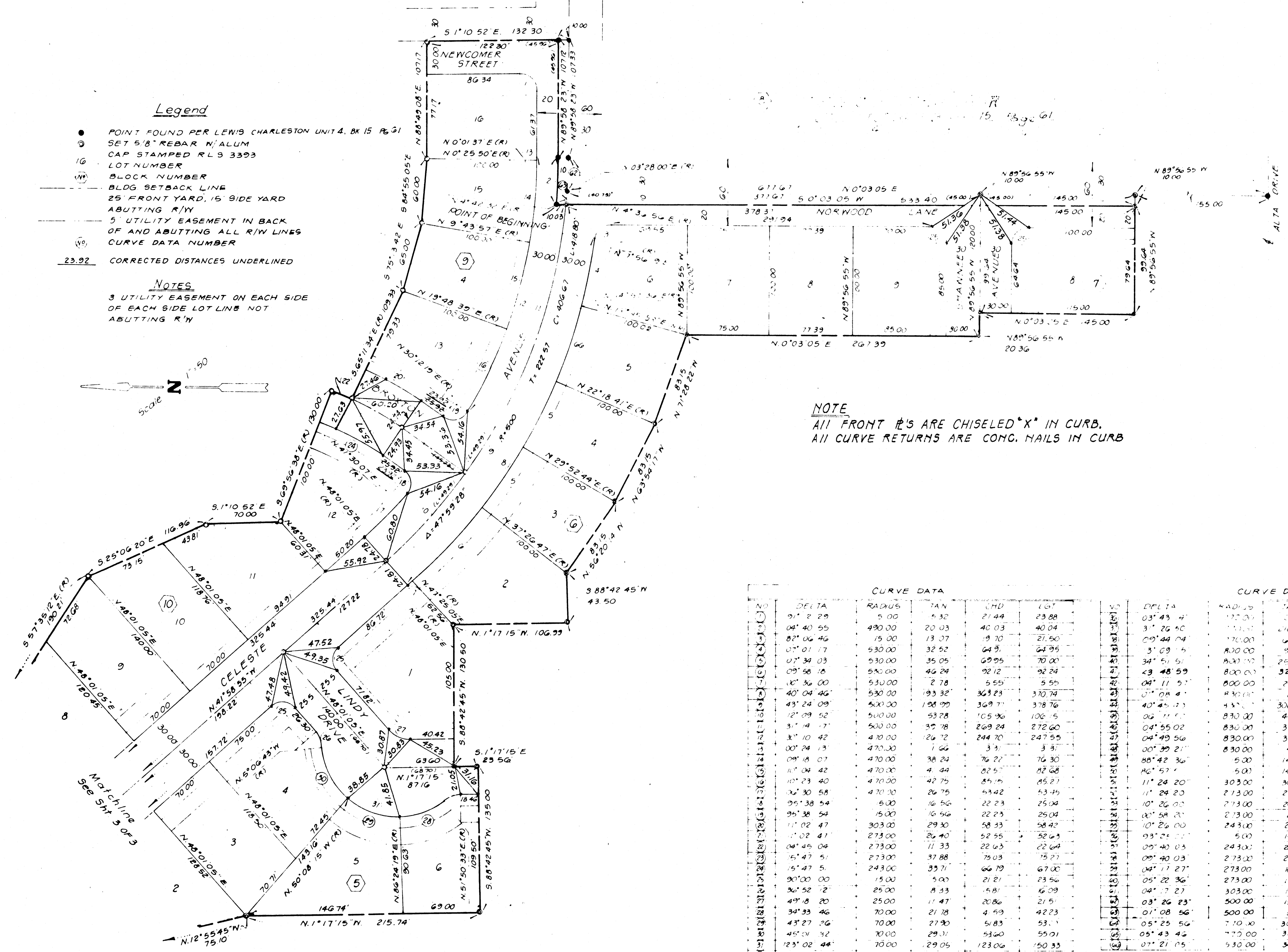
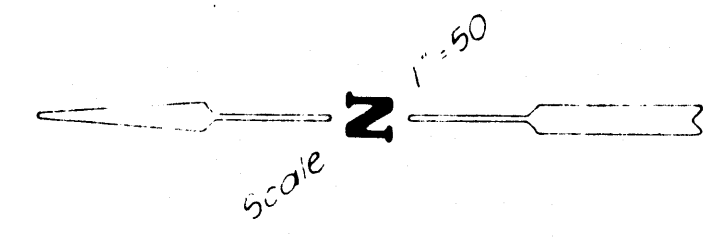
BEING A SUBDIVISION WITHIN A PORTION OF
THE N.W. 1/4 OF SEC. 35, T.20S., R.60E., M.D.M.
CITY OF LAS VEGAS, CLARK COUNTY, NEVADA

Legend

- POINT FOUND PER LEWIS CHARLESTON UNIT 4, BK 15 P. 91
- ⊙ SET 5/8" REBAR IN ALUM CAP STAMPED RLS 3393
- 16 LOT NUMBER
- (N) BLOCK NUMBER
- BLDG SETBACK LINE
- 25' FRONT YARD, 15' SIDE YARD
- ABUTTING R/W
- 5' UTILITY EASEMENT IN BACK OF AND ABUTTING ALL R/W LINES
- (C) CURVE DATA NUMBER
- 23.92 CORRECTED DISTANCES UNDERLINED

NOTES

3' UTILITY EASEMENT ON EACH SIDE OF EACH SIDE LOT LINE NOT ABUTTING R/W



NOTE
ALL FRONT R/S ARE CHISELED *X* IN CURB.
ALL CURVE RETURNS ARE CONC. NAILS IN CURB

NO.	DELTA	RADIUS	TAN	CHD	LCI
1	01° 2' 29"	5.00	5.32	21.44	23.88
2	04° 40' 55"	490.00	20.03	40.03	40.04
3	82° 06' 46"	15.00	13.07	9.70	21.50
4	07° 01' 17"	530.00	32.52	64.81	64.95
5	07° 34' 03"	530.00	35.05	69.95	70.00
6	09° 58' 18"	590.00	46.24	92.12	92.24
7	10° 36' 00"	530.00	2.78	5.55	5.55
8	40° 04' 46"	530.00	93.32	363.23	370.74
9	43° 24' 09"	500.00	158.99	369.71	378.76
10	12° 09' 52"	500.00	53.78	105.96	106.15
11	31° 14' 17"	500.00	35.78	269.24	272.60
12	31° 10' 42"	470.00	26.12	244.70	247.55
13	00° 24' 13"	470.00	1.65	3.31	3.31
14	09° 18' 07"	470.00	38.24	76.27	76.30
15	10° 04' 42"	470.00	4.44	82.57	82.68
16	10° 23' 40"	470.00	42.75	85.15	85.21
17	06° 30' 58"	470.00	26.75	53.42	53.45
18	05° 38' 54"	500.00	16.56	22.23	25.04
19	05° 38' 54"	150.00	16.56	22.23	25.04
20	11° 02' 47"	303.00	29.30	58.33	58.42
21	11° 02' 47"	273.00	26.40	52.55	52.65
22	04° 45' 04"	273.00	11.33	22.63	22.64
23	15° 47' 51"	273.00	37.88	75.03	75.27
24	15° 47' 51"	243.00	35.71	60.79	67.00
25	36° 52' 12"	250.00	8.33	5.81	6.09
26	49° 18' 20"	250.00	11.47	20.86	21.51
27	34° 33' 46"	70.00	21.78	4.59	42.23
28	43° 27' 26"	70.00	27.90	5.83	53.11
29	45° 04' 32"	70.00	29.31	53.60	55.01
30	12° 02' 44"	70.00	29.05	123.06	150.33
31	04° 27' 51"	770.00	30.01	59.99	59.99
32	05° 16' 13"	770.00	35.44	70.80	70.83
33	05° 24' 12"	770.00	36.33	72.53	72.51
34	05° 34' 51"	770.00	37.53	74.97	75.00

NO.	DELTA	RADIUS	TAN	CHD	LCI
35	03° 43' 47"	127.00	5.71	49.99	50.00
36	31° 26' 40"	111.00	20.78	41.39	42.62
37	09° 44' 04"	170.00	6.46	10.56	10.81
38	31° 09' 15"	870.00	92.22	83.23	83.53
39	34° 51' 51"	800.00	25.20	479.32	486.80
40	43° 48' 59"	800.00	32.13	506.99	611.79
41	04° 11' 57"	800.00	29.33	58.62	58.63
42	01° 08' 41"	830.00	8.30	6.51	13.01
43	40° 45' 13"	430.00	308.11	578.14	590.51
44	06° 11' 51"	830.00	44.93	89.73	89.77
45	04° 55' 02"	830.00	35.64	7.20	71.23
46	04° 49' 51"	830.00	35.02	69.28	70.00
47	00° 39' 21"	830.00	4.75	9.50	9.50
48	88° 42' 36"	500.00	14.67	20.97	23.22
49	46° 57' 11"	500.00	14.21	20.64	22.77
50	11° 24' 20"	303.00	60.26	60.22	60.32
51	11° 24' 20"	273.00	27.26	50.25	50.34
52	10° 26' 00"	273.00	24.93	49.54	49.71
53	10° 58' 31"	273.00	23.32	4.63	4.63
54	10° 26' 00"	243.00	22.19	44.19	44.25
55	03° 21' 11"	500.00	15.92	21.84	26.42
56	09° 40' 03"	243.00	20.55	40.95	41.00
57	09° 40' 03"	273.00	23.09	46.01	46.06
58	04° 17' 27"	273.00	10.23	20.44	20.44
59	05° 22' 36"	273.00	12.82	25.62	25.62
60	04° 17' 27"	303.00	11.35	22.69	22.69
61	03° 26' 23"	500.00	15.01	30.01	30.01
62	01° 08' 56"	500.00	5.01	10.03	10.03
63	05° 25' 56"	770.00	36.55	73.98	73.00
64	05° 43' 46"	770.00	38.53	76.97	77.00
65	07° 21' 05"	530.00	34.05	67.96	68.80

For Survey Use Only

