

# LEWIS HOMES ~ CHARLESTON UNIT NO. 10A

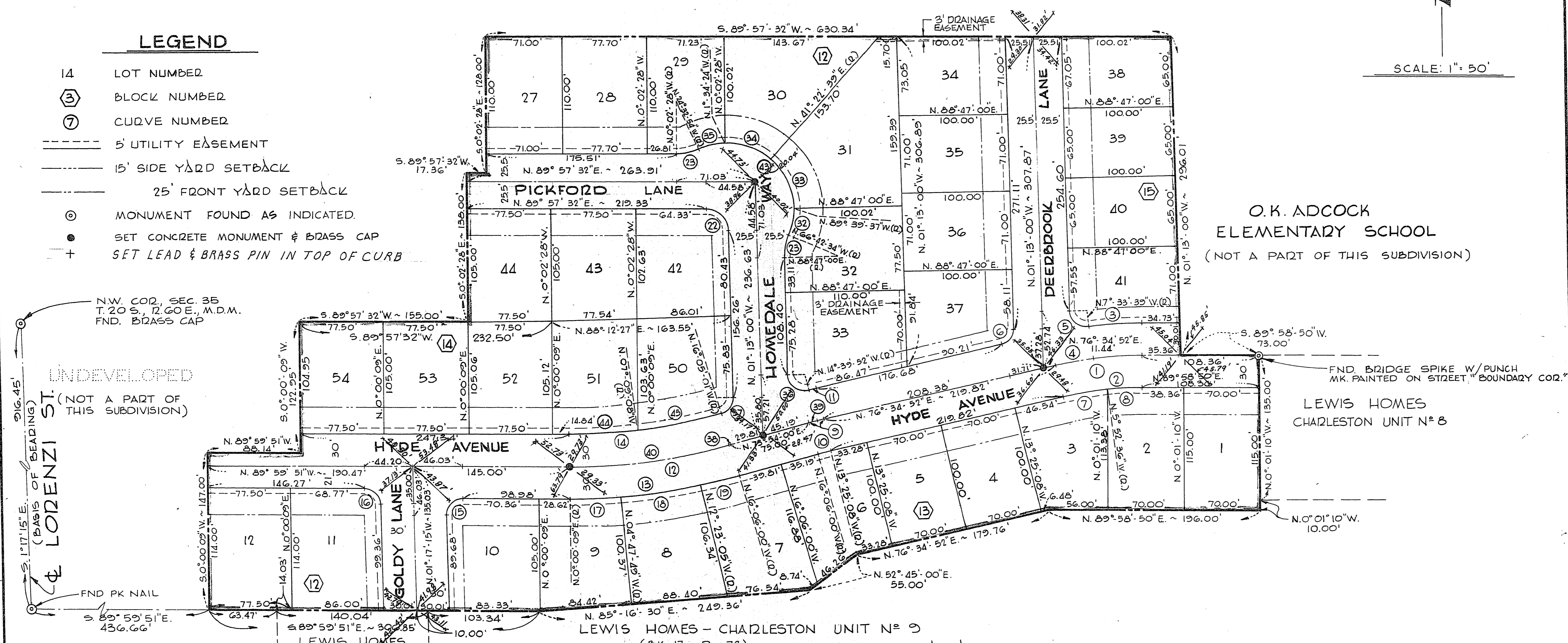
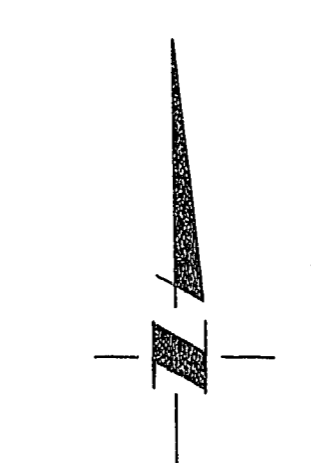
A PORTION OF THE NW 1/4, OF SECT. 35, T. 20 S., R. 60 E., M.D.M. CITY OF LAS VEGAS  
CLARK COUNTY NEVADA

UNDEVELOPED  
(NOT A PART OF THIS SUBDIVISION)

### LEGEND

- 14 LOT NUMBER
- ③ BLOCK NUMBER
- ⑦ CURVE NUMBER
- 5' UTILITY EASEMENT
- 15' SIDE YARD SETBACK
- 25' FRONT YARD SETBACK
- ⊙ MONUMENT FOUND AS INDICATED
- SET CONCRETE MONUMENT & BRASS CAP
- + SET LEAD & BRASS PIN IN TOP OF CURB

SCALE: 1" = 50'



O.K. ADCOCK  
ELEMENTARY SCHOOL  
(NOT A PART OF THIS SUBDIVISION)

LEWIS HOMES  
CHARLESTON UNIT N# 8

LEWIS HOMES - CHARLESTON UNIT N# 9  
(Bk. 17, Pg. 78)

### CURVE DATA

NO.	Δ	R	L	T
1	13° 23' 58"	340.00	79.51	39.94
2	13° 23' 58"	310.00	72.50	36.42
3	07° 32' 29"	370.00	48.70	24.39
4	05° 51' 29"	340.00	34.76	17.40
5	26° 20' 39"	13.00	25.22	16.76
6	77° 47' 52"	15.00	20.37	12.10
7	07° 32' 32"	310.00	40.81	20.43
8	05° 51' 26"	310.00	31.69	15.86
9	02° 40' 52"	300.00	14.04	7.02
10	02° 40' 52"	270.00	12.63	6.32
11	01° 14' 44"	330.00	7.17	3.59
12	16° 06' 09"	533.12	149.83	75.41
13	16° 06' 09"	563.12	158.26	79.66
14	16° 05' 10"	509.12	141.25	71.09
15	31° 17' 24"	15.00	23.90	15.34
16	88° 42' 36"	15.00	23.22	14.67
17	04° 47' 58"	563.12	47.17	23.60

NO.	Δ	R	L	T
18	07° 35' 16"	563.12	74.58	37.34
19	03° 42' 55"	563.12	36.52	18.26
22	88° 49' 28"	20.00	31.01	19.59
23	24° 30' 26"	50.00	21.39	10.86
32	22° 57' 03"	61.00	24.43	12.38
33	48° 57' 44"	61.00	52.13	27.78
34	42° 57' 03"	61.00	45.73	24.00
35	22° 58' 30"	61.00	24.46	12.40
36	103° 26' 52"	15.00	27.08	19.01
37	75° 07' 59"	15.00	19.67	11.54
38	00° 00' 59"	533.12	0.15	0.08
39	01° 26' 08"	300.00	7.52	3.76
40	16° 05' 10"	533.12	149.68	75.33
43	137° 50' 20"	61.00	146.75	158.25
44	07° 09' 17"	503.12	62.83	31.45
45	08° 55' 53"	503.12	78.43	39.29

THIS IS TO CERTIFY THAT THE MONUMENTS  
HAVE BEEN SET AND THAT THE TIES HAVE  
BEEN ESTABLISHED, AS SHOWN HEREON

Paul I. Bowen  
PAUL I. BOWEN, R.L.S.  
NEV. CERT. NO. 4232

CHURCH  
(NOT A PART OF THIS SUBDIVISION)  
BASIS OF BEARING  
THE BEARING OF NORTH 1° 17' 15" WEST, BEING THE WEST LINE OF SECTION 35, TOWNSHIP 20 SOUTH, RANGE 60 EAST, M.D.M. NEVADA, AS SHOWN IN FILE 11, PAGE 11 OF RECORDED SURVEYS ON FILE IN THE OFFICE OF THE COUNTY RECORDER, CLARK COUNTY, NEVADA.

5-6-11-17