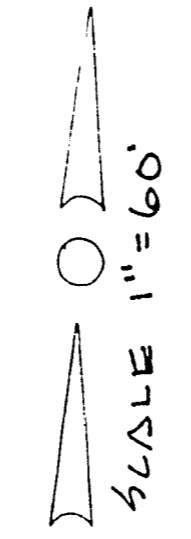


JADE PARK UNIT NO. 6

(AS PER PLAT ~ BOOK 21, PAGE 4)

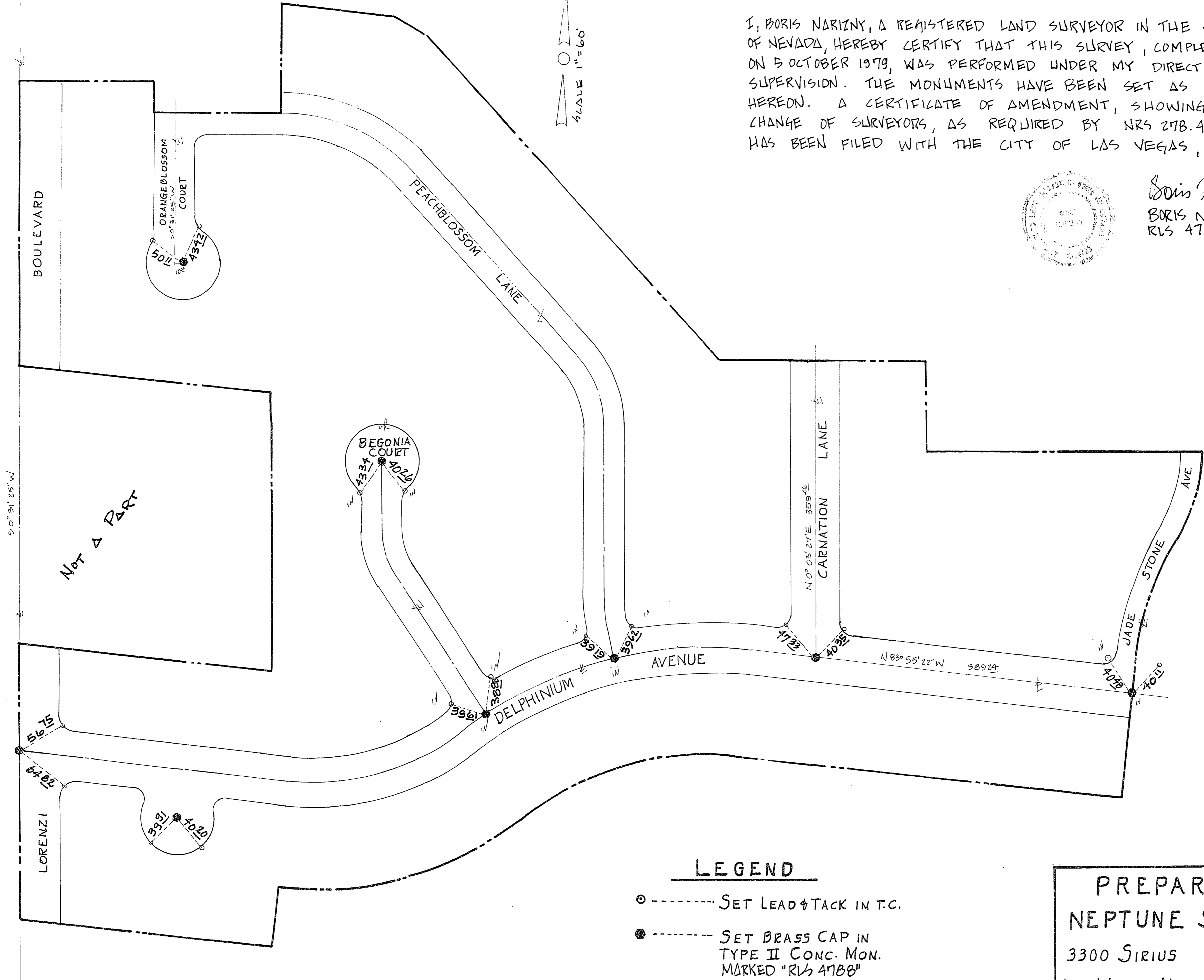
JADE PARK UNIT #5



I, BORIS NARIZNY, A REGISTERED LAND SURVEYOR IN THE STATE OF NEVADA, HEREBY CERTIFY THAT THIS SURVEY, COMPLETED ON 5 OCTOBER 1979, WAS PERFORMED UNDER MY DIRECT SUPERVISION. THE MONUMENTS HAVE BEEN SET AS SHOWN HEREON. A CERTIFICATE OF AMENDMENT, SHOWING THE CHANGE OF SURVEYORS, AS REQUIRED BY NRS 218.473 HAS BEEN FILED WITH THE CITY OF LAS VEGAS, NEV.



Boris Narizny
BORIS NARIZNY
RLS 4788



LEGEND

- SET LEAD TACK IN T.C.
- SET BRASS CAP IN TYPE II CONC. MON. MARKED "RLS 4788"

PREPARED BY
NEPTUNE SURVEYORS
3300 SIRIUS SUITE 107
LAS VEGAS, NEV. PHONE 873-8126

JADE PARK UNIT #3

4-6-29

058-1861-6