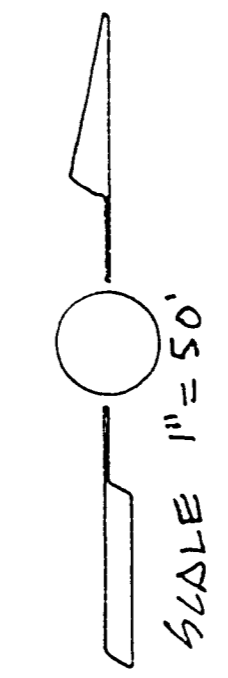
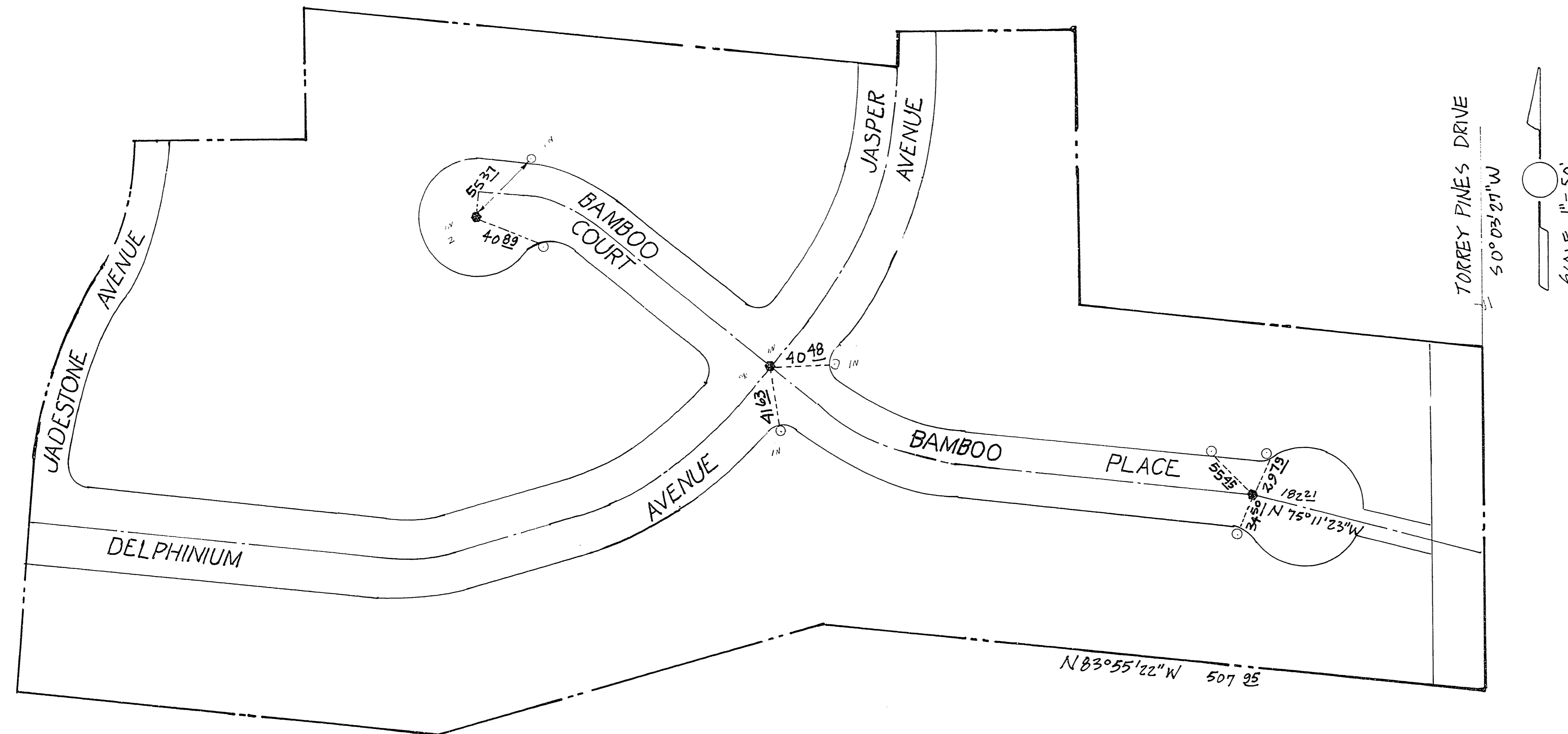


# JADE PARK UNIT NO. 3

(AS PER PLAT ~ BOOK 21 PAGE 23)



I, BORIS NARIZNY, A REGISTERED LAND SURVEYOR IN THE STATE OF NEVADA, HEREBY CERTIFY THAT THIS SURVEY WAS PERFORMED UNDER MY DIRECT SUPERVISION AND WAS COMPLETED ON 5 OCTOBER 1999. THE MONUMENTS HAVE BEEN SET AS SHOWN HEREON. A CERTIFICATE OF AMENDMENT, SHOWING THE CHANGE OF SURVEYORS, AS REQUIRED BY NRS 218.473 HAS BEEN FILED WITH THE CITY OF LAS VEGAS.



*Boris Narizny*  
BORIS NARIZNY  
RLS 4788

### LEGEND

- SET LEAD & TACK IN T.C.
  - SET BRASS CAP MARKED "RLS 4788"
- IN TYPE II CONC. MON.

PREPARED BY  
NEPTUNE SURVEYORS  
3300 SIRIUS SUITE 7  
LAS VEGAS, NEV. 89102  
PHONE - 873-8126