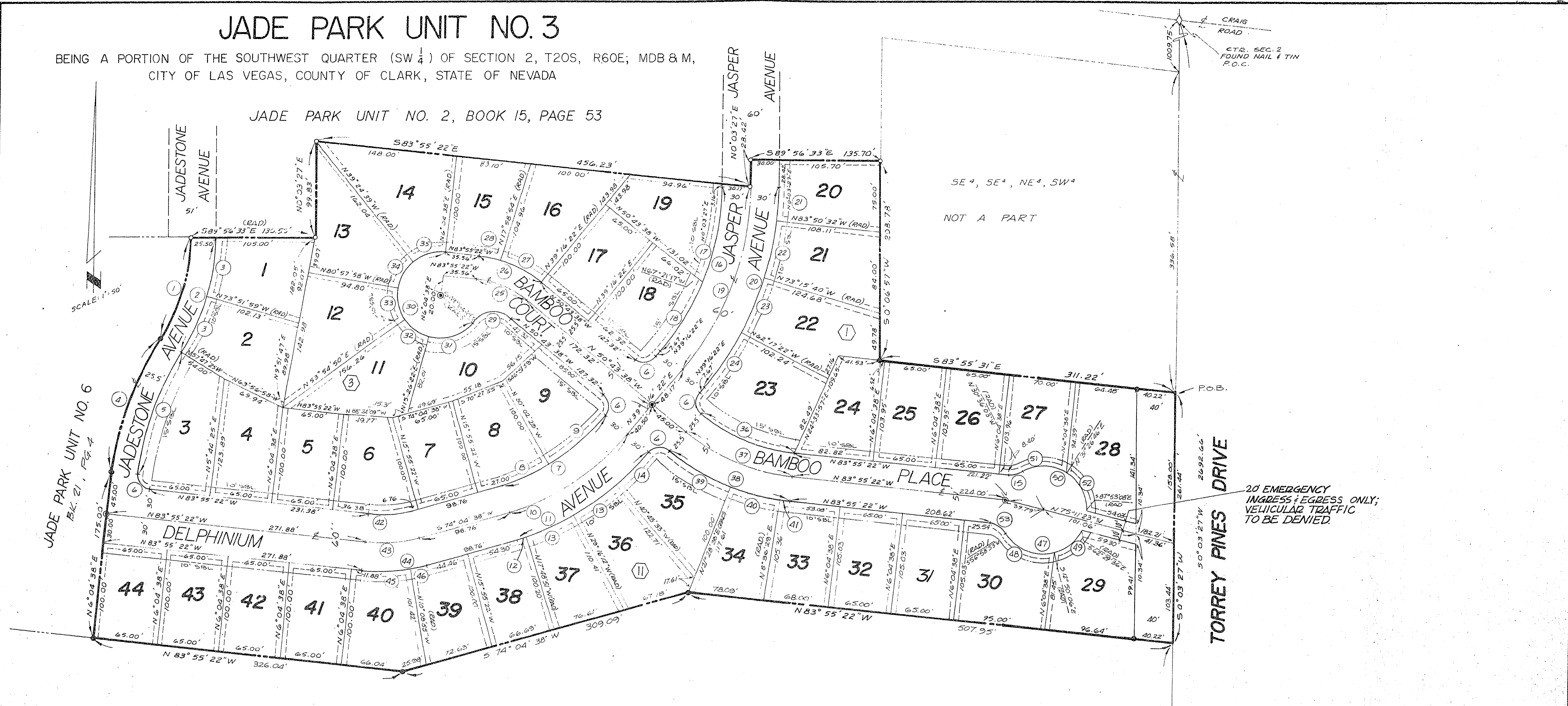


# JADE PARK UNIT NO. 3

BEING A PORTION OF THE SOUTHWEST QUARTER (SW 1/4) OF SECTION 2, T20S, R60E; MDB & M, CITY OF LAS VEGAS, COUNTY OF CLARK, STATE OF NEVADA

JADE PARK UNIT NO. 2, BOOK 15, PAGE 53



UNDEVELOPED

CURVE DATA

NO.	Δ	R	L	T	NO.	Δ	R	L	T	NO.	Δ	R	L	T
1	32°09'08"	200.00'	112.23'	57.64'	16	39°12'55"	270.22'	184.95'	96.26'	31	65°21'11"	45.50'	51.90'	29.18'
2	32°09'08"	225.50'	126.54'	64.99'	17	22°35'16"	270.22'	106.53'	53.97'	32	38°28'28"	45.50'	30.55'	15.88'
3	16°04'34"	225.50'	63.27'	31.84'	18	16°37'39"	270.22'	78.42'	39.49'	33	45°07'12"	45.50'	35.83'	18.90'
4	26°07'57"	326.71'	149.01'	75.82'	19	39°12'55"	300.22'	205.48'	106.95'	34	41°33'19"	45.50'	33.00'	17.26'
5	26°07'57"	301.21'	137.38'	69.91'	20	39°12'55"	330.22'	226.01'	117.64'	35	45°29'17"	45.50'	36.12'	19.07'
6	90°00'00"	15.00'	23.56'	15.00'	21	6°06'01"	330.22'	35.16'	17.60'	36	33°11'44"	181.63'	105.23'	54.14'
7	34°48'16"	215.08'	130.65'	67.41'	22	10°34'52"	330.22'	60.98'	30.58'	37	33°11'44"	207.13'	120.01'	61.74'
8	14°07'07"	215.08'	53.00'	26.63'	23	10°58'18"	330.22'	63.23'	31.71'	38	33°11'44"	232.63'	134.78'	69.34'
9	20°41'09"	215.08'	77.65'	39.25'	24	11°33'44"	330.22'	66.64'	33.43'	39	17°47'44"	232.63'	122.25'	36.42'
10	34°48'16"	245.08'	148.88'	76.82'	25	33°11'44"	100.00'	57.94'	29.81'	40	12°52'09"	232.63'	52.25'	26.24'
11	34°48'16"	275.08'	167.10'	86.22'	26	33°11'44"	125.50'	72.71'	37.41'	41	2°31'51"	232.63'	10.28'	5.14'
12	1°53'29"	275.08'	9.08'	4.54'	27	21°17'28"	125.50'	46.64'	23.59'	42	22°00'00"	118.61'	45.54'	23.05'
13	11°27'21"	275.08'	55.00'	27.59'	28	11°54'16"	125.50'	26.08'	13.08'	43	22°00'00"	148.61'	57.06'	28.89'
14	10°00'05"	275.08'	48.02'	24.07'	29	89°11'11"	28.07'	43.69'	21.67'	44	22°00'00"	178.61'	68.58'	34.72'
15	36°40'41"	25.00'	16.00'	8.29'	30	235°59'27"	45.50'	187.41'	00'	45	16°13'33"	178.61'	50.58'	25.46'
					50	122°42'55"	45.50'	97.49'	83.31'	46	5°46'27"	178.61'	18.00'	9.01'
					51	62°02'49"	45.50'	49.27'	27.36'	47	119°28'29"	45.50'	94.88'	77.98'
					52	60°40'06"	45.50'	48.18'	26.62'	48	69°48'59"	45.20'	55.44'	31.75'
					53	30°54'15"	25.00'	22.21'	11.90'	49	49°39'30"	45.50'	39.44'	21.05'

## LEGEND

- ① SUBDIVISION BOUNDARY
- ⑩ CURVE NUMBER
- ⑪ LOT NUMBER
- ⑫ BLOCK NUMBER
- ◆ FOUND POINT AS NOTED
- FOUND MONUMENTS PER MAP BK.15, PG.53
- SET MONUMENTS
- SBL SETBACK LINE (10' FRONT, 15' SIDE)
- 5' UTILITY EASEMENT ALONG SIDE & FRONT LOT LINES
- ⊙ TYPE II STREET MONUMENT AS REQ'D BY CLV

<b>HORIZONTAL CONTROL</b>	
<b>JADE PARK UNIT NO. 3</b>	
TUREGUN & ASSOCIATES CONSULTING ENGINEERS 3451 LOSEE ROAD, NORTH LAS VEGAS, PHONE: 642-2676	NEVADA 89030
SHEET	3/10

