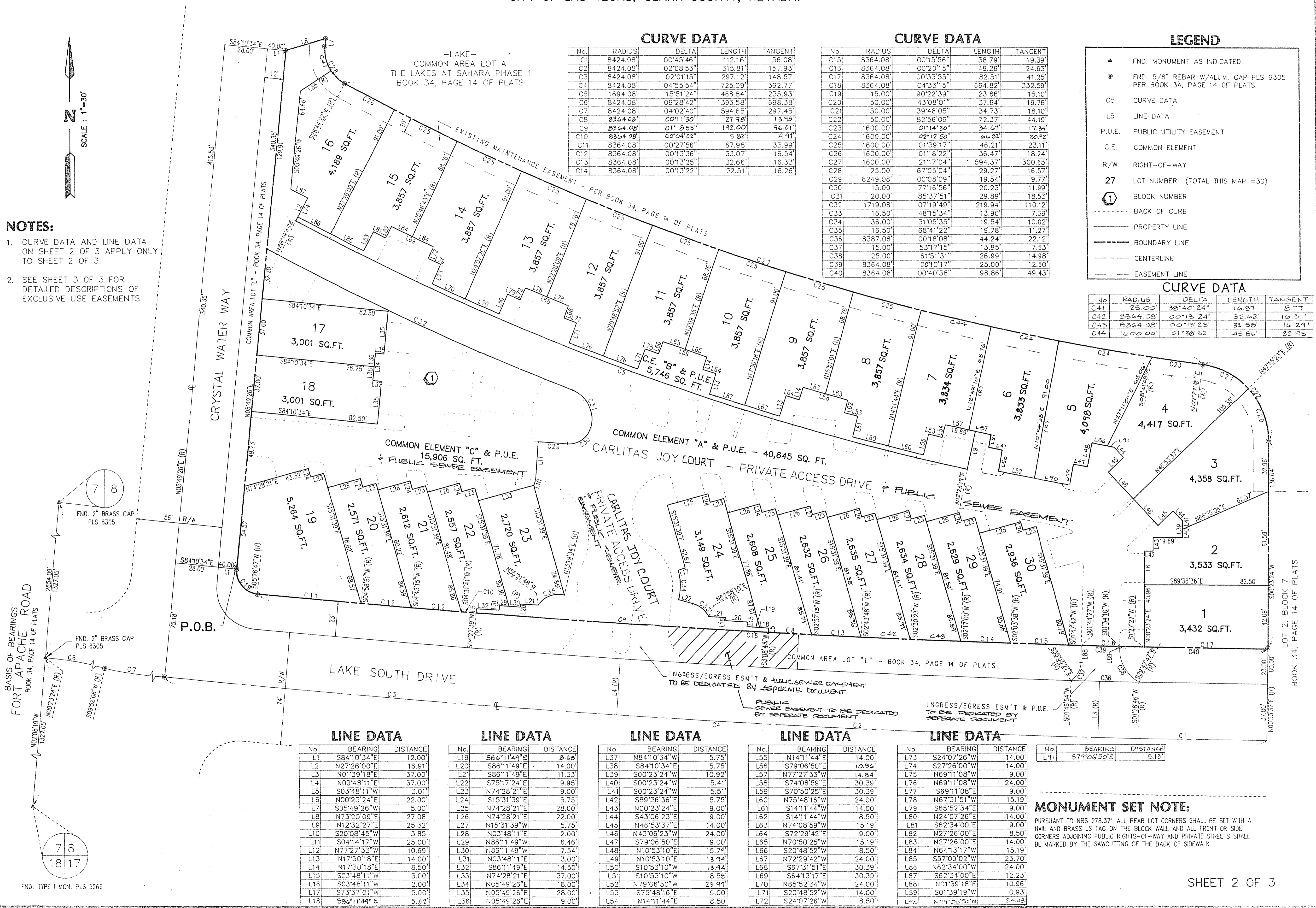


20-17-157

LAGUNA BAY TOWNHOME ESTATES

(A COMMON INTEREST COMMUNITY)

BEING A PORTION OF THE SOUTH HALF (S 1/2) OF SECTION 8, TOWNSHIP 21 SOUTH, RANGE 60 EAST, M.D.M., CITY OF LAS VEGAS, CLARK COUNTY, NEVADA.



- NOTES:**
- CURVE DATA AND LINE DATA ON SHEET 2 OF 3 APPLY ONLY TO SHEET 2 OF 3.
 - SEE SHEET 3 OF 3 FOR DETAILED DESCRIPTIONS OF EXCLUSIVE USE EASEMENTS

CURVE DATA

No.	RADIUS	DELTA	LENGTH	TANGENT
C1	8424.08'	00°45'46"	112.16'	56.08'
C2	8424.08'	02°08'53"	315.81'	157.93'
C3	8424.08'	02°01'15"	297.12'	148.57'
C4	8424.08'	04°55'54"	725.09'	362.77'
C5	1694.08'	15°51'24"	468.84'	235.93'
C6	8424.08'	09°28'42"	1393.58'	695.38'
C7	8424.08'	04°02'40"	594.65'	297.45'
C8	8364.08'	00°11'30"	21.98'	10.99'
C9	8364.08'	01°18'55"	192.00'	96.31'
C10	8364.08'	00°04'02"	9.82'	4.91'
C11	8364.08'	00°27'56"	67.98'	33.99'
C12	8364.08'	00°13'36"	33.07'	16.54'
C13	8364.08'	00°13'25"	32.66'	16.33'
C14	8364.08'	00°13'22"	32.51'	16.26'

CURVE DATA

No.	RADIUS	DELTA	LENGTH	TANGENT
C15	8364.08'	00°15'56"	38.79'	19.39'
C16	8364.08'	00°20'15"	49.26'	24.63'
C17	8364.08'	00°33'55"	82.51'	41.25'
C18	8364.08'	04°33'15"	664.82'	332.59'
C19	15.00'	90°22'39"	23.66'	15.10'
C20	50.00'	43°08'01"	37.64'	19.76'
C21	50.00'	39°48'06"	34.73'	18.10'
C22	50.00'	82°58'06"	72.37'	44.19'
C23	1600.00'	01°14'30"	34.67'	17.34'
C24	1600.00'	02°12'50"	46.82'	23.42'
C25	1600.00'	01°39'17"	46.21'	23.11'
C26	1600.00'	01°18'22"	36.47'	18.24'
C27	1600.00'	21°17'04"	594.37'	300.65'
C28	25.00'	67°05'04"	29.27'	16.57'
C29	8249.08'	00°08'09"	19.54'	9.77'
C30	15.00'	77°16'56"	20.23'	11.99'
C31	20.00'	85°37'51"	29.89'	18.53'
C32	1719.08'	07°19'49"	219.94'	110.12'
C33	16.50'	48°15'34"	13.90'	7.39'
C34	36.00'	31°05'35"	19.54'	10.02'
C35	16.50'	68°41'22"	19.78'	11.27'
C36	8387.08'	00°18'08"	44.24'	22.12'
C37	15.00'	53°17'15"	13.95'	7.53'
C38	25.00'	61°51'31"	26.99'	14.98'
C39	8364.08'	00°10'17"	25.00'	12.50'
C40	8364.08'	00°40'38"	98.86'	49.43'

LEGEND

- ▲ FND. MONUMENT AS INDICATED
- FND. 5/8" REBAR W/ALUM. CAP PLS 6305 PER BOOK 34, PAGE 14 OF PLATS.
- C5 CURVE DATA
- L5 LINE DATA
- P.U.E. PUBLIC UTILITY EASEMENT
- C.E. COMMON ELEMENT
- R/W RIGHT-OF-WAY
- 27 LOT NUMBER (TOTAL THIS MAP = 30)
- ① BLOCK NUMBER
- BACK OF CURB
- PROPERTY LINE
- BOUNDARY LINE
- CENTERLINE
- EASEMENT LINE

CURVE DATA

No.	RADIUS	DELTA	LENGTH	TANGENT
C41	25.00'	38°40'24"	16.87'	8.77'
C42	8364.08'	00°13'24"	32.62'	16.31'
C43	8364.08'	00°13'23"	32.58'	16.29'
C44	16.00.00'	01°38'32"	45.84'	22.93'

W.O.#	755-5910	# LOTS	30	DATE	APRIL 1994	BY	JANIS
REVISION	DESCRIPTION	DATE	BY	DATE	DESCRIPTION	BY	DATE
1	REV. LOT LINES - LOTS 4, 5, 6, 7. REV. LOT LINES DIST. 25-29	8/19/94	FJM	8/17/94	REV. LINE TABLE FOR LOTS 24, 25 ADD NOTE	FJM	8/17/94
2	AND DOCUMENT NO. FOR FILE	8/19/94	LS	8/19/94	REV. CURVE DATA AND RADIAL BEARINGS - CB	LS	8/19/94
3	REVISED STREET NAMES PER MAT @ CLY	11-22-94	PL/PL	11-22-94	REVISED DOCUMENTS FOR EASEMENTS	PL/PL	11-22-94

LINE DATA

No.	BEARING	DISTANCE
L1	S84°10'34"E	12.00'
L2	N27°26'00"E	16.91'
L3	N01°39'18"E	37.00'
L4	N03°48'11"E	37.00'
L5	S03°48'11"W	3.01'
L6	N00°23'24"E	22.00'
L7	S05°49'26"W	5.00'
L8	N73°20'09"E	27.08'
L9	N12°32'27"E	25.32'
L10	S20°08'45"W	3.85'
L11	S04°14'17"W	25.00'
L12	N77°27'33"W	10.69'
L13	N17°30'18"E	14.00'
L14	N17°30'18"E	8.50'
L15	S03°48'11"W	3.00'
L16	S03°48'11"W	2.00'
L17	S73°37'01"W	5.00'
L18	S86°11'44"E	5.82'

LINE DATA

No.	BEARING	DISTANCE
L19	S86°11'44"E	8.46'
L20	S86°11'49"E	14.00'
L21	S86°11'49"E	11.33'
L22	S75°17'24"E	9.95'
L23	N74°28'21"E	9.00'
L24	S15°31'39"E	5.75'
L25	N74°28'21"E	28.00'
L26	N74°28'21"E	22.00'
L27	N15°31'39"E	5.75'
L28	N03°48'11"E	2.00'
L29	N86°11'49"W	6.46'
L30	N86°11'49"W	7.54'
L31	N03°48'11"E	3.00'
L32	S86°11'49"E	14.50'
L33	N74°28'21"E	37.00'
L34	N05°49'26"E	18.00'
L35	N05°49'26"E	28.00'
L36	N05°49'26"E	9.00'

LINE DATA

No.	BEARING	DISTANCE
L37	N84°10'34"W	5.75'
L38	S84°10'34"E	5.75'
L39	S00°23'24"W	10.92'
L40	S00°23'24"W	5.41'
L41	S00°23'24"W	5.51'
L42	S89°36'36"E	5.75'
L43	N00°23'24"E	9.00'
L44	S43°06'23"E	9.00'
L45	N46°53'37"E	14.00'
L46	N43°06'23"W	24.00'
L47	S79°06'50"E	9.00'
L48	N10°53'10"E	15.74'
L49	N10°53'10"E	13.44'
L50	S10°53'10"W	13.44'
L51	S10°53'10"W	8.58'
L52	N79°06'50"W	23.91'
L53	S75°48'16"E	9.00'
L54	N14°11'44"E	8.50'

LINE DATA

No.	BEARING	DISTANCE
L55	N14°11'44"E	14.00'
L56	S79°06'50"E	12.84'
L57	N77°27'33"W	14.84'
L58	S74°08'59"E	30.39'
L59	S70°50'25"E	30.39'
L60	N75°48'16"W	24.00'
L61	S14°11'44"W	14.00'
L62	S14°11'44"W	8.50'
L63	N74°08'59"W	15.19'
L64	S72°29'42"E	9.00'
L65	N70°50'25"W	15.19'
L66	S20°48'52"W	8.50'
L67	N72°29'42"W	24.00'
L68	S67°31'51"E	30.39'
L69	S64°13'17"E	30.39'
L70	N65°52'34"W	24.00'
L71	S20°48'52"W	14.00'
L72	S24°07'26"W	8.50'

LINE DATA

No.	BEARING	DISTANCE
L73	S24°07'26"W	14.00'
L74	S27°26'00"W	14.00'
L75	N69°11'08"W	9.00'
L76	N69°11'08"W	24.00'
L77	S69°11'08"E	9.00'
L78	N67°31'51"W	15.19'
L79	S65°52'34"E	9.00'
L80	N24°07'26"E	14.00'
L81	S62°34'00"E	9.00'
L82	N27°26'00"E	8.50'
L83	N27°26'00"E	14.00'
L84	N64°13'17"W	15.19'
L85	S57°09'02"W	23.70'
L86	N62°34'00"W	24.00'
L87	S62°34'00"E	12.23'
L88	N01°39'18"E	10.96'
L89	S01°39'19"W	0.93'
L90	N74°06'55"W	24.93'

MONUMENT SET NOTE:

PURSUANT TO NRS 278.371 ALL REAR LOT CORNERS SHALL BE SET WITH A NAIL AND BRASS LS TAG ON THE BLOCK WALL AND ALL FRONT OR SIDE CORNERS ADJOINING PUBLIC RIGHTS-OF-WAY AND PRIVATE STREETS SHALL BE MARKED BY THE SAWCUTTING OF THE BACK OF SIDEWALK.

Book 65 Page 14