

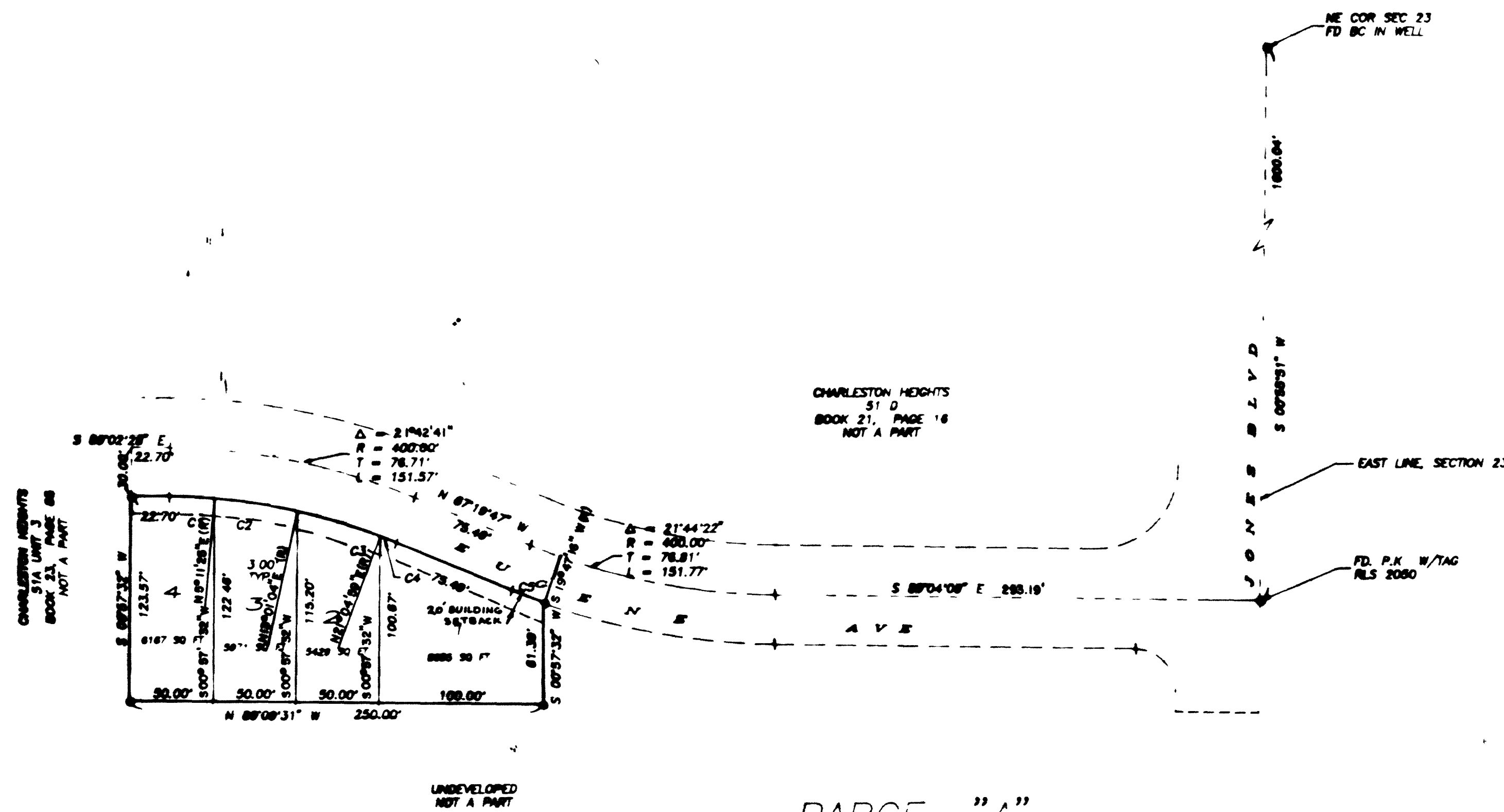
Book 900404

27-12-12

00638

LATITUDES

BEING A PORTION OF THE NORTHEAST QUARTER (NE 1/4) OF SECTION 23, TOWNSHIP 20 SOUTH, RANGE 60 EAST, MOUNT DIABLO MERIDIAN, CITY OF LAS VEGAS, CLARK COUNTY, NEVADA



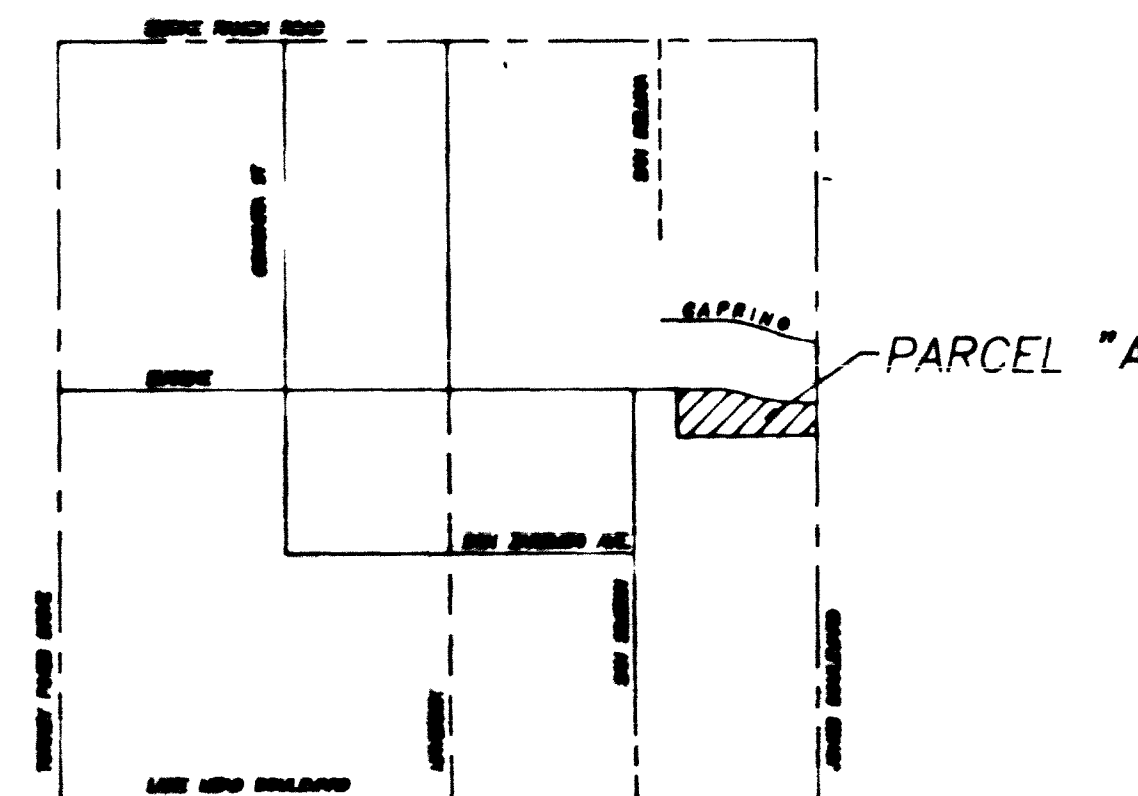
SCALE
1" = 60'

REVISION	DATE	BY	DESCRIPTION
1	01.00.11	AS	PREP
2	01.00.11	AS	PREP
3	01.00.11	AS	PREP
4	01.00.11	AS	PREP

BASIS OF BEARING
 BEING THE BEARING OF THE NE 1/4 OF SECTION 23, TOWNSHIP 20 SOUTH, RANGE 60 EAST, M.D.M., AS SHOWN BY A MAP OF THE OFFICE OF THE CLARK COUNTY RECORDER AS BOOK 18, PAGE 48, OF PLATS

CURVE	RADIUS	LENGTH	TANGENT	DELTA
C1	R = 370.00'	L = 27.32'	T = 13.67'	Δ = 04° 35' 30"
C2	R = 370.00'	L = 30.35'	T = 15.18'	Δ = 07° 48' 30"
C3	R = 370.00'	L = 52.08'	T = 24.08'	Δ = 09° 03' 54"
C4	R = 370.00'	L = 10.25'	T = 5.13'	Δ = 01° 30' 14"
C5	R = 430.00'	L = 21.63'	T = 10.82'	Δ = 02° 52' 57"

- LEGEND**
- TYPE II MONUMENT TO BE SET
 - 1 LOT NUMBER
 - SETBACK LINE
- TOTAL NUMBER OF LOTS = 4



VICINITY MAP
Not to scale

No	REVISIONS	Date	Init	Drawn by	Job No	Scale
				PAS	7093.157	1" = 60'
				Checked by	RMG	Sheet
				Date		2 OF 2

LATITUDES
CITY OF LAS VEGAS, NEVADA
PARCEL A

Prepared in the Office of
Church Engineering, Inc.
 Consulting Engineers
 1701 E. 7th Street
 Las Vegas, NV 89102

