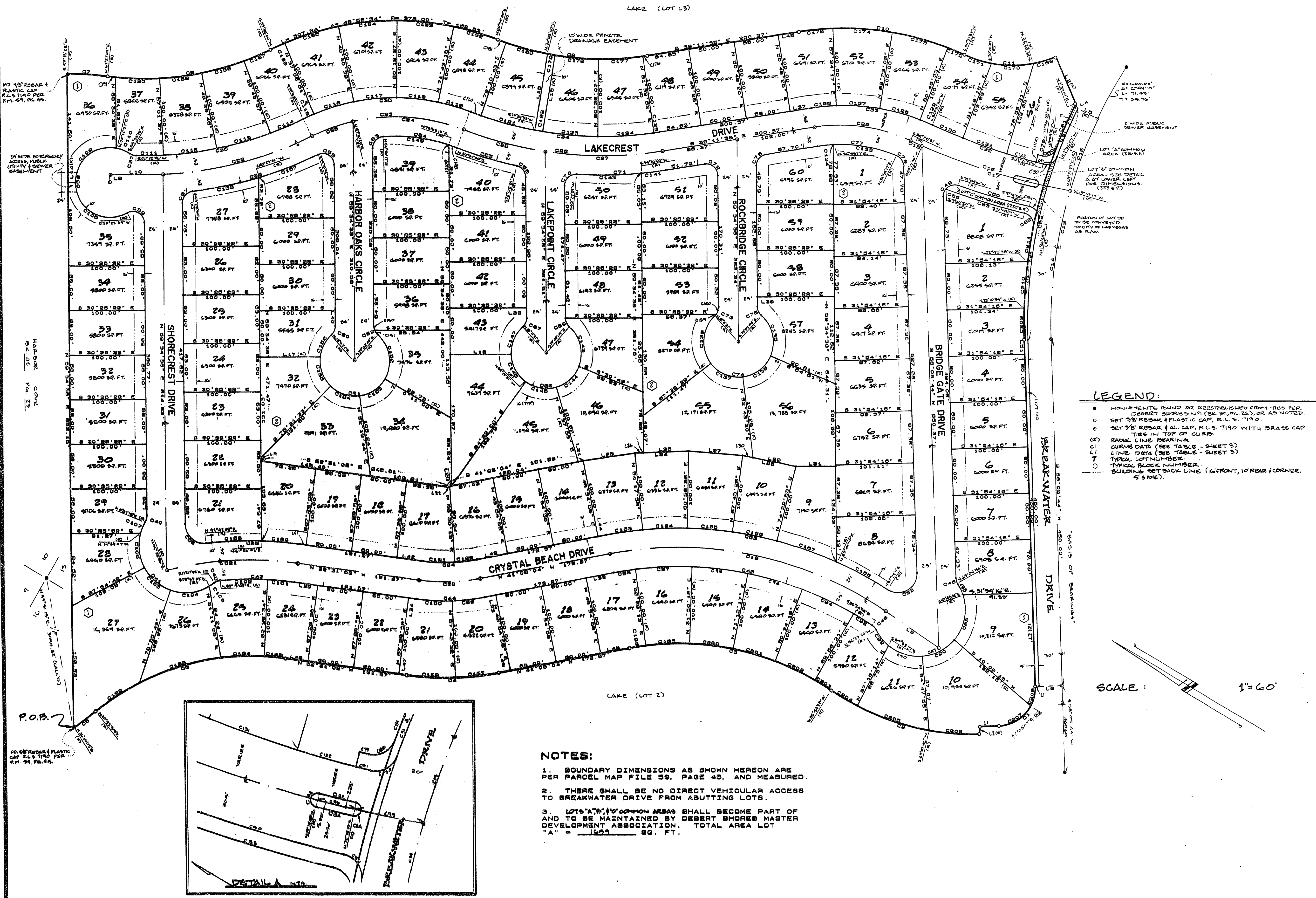


# LAKESHORE

A DIVISION OF PARCEL 2 OF PARCEL MAP FILE 59, PAGE 45, BEING A PART OF DESERT SHORES No 1, LYING IN SECTION 16, T. 20 S., R. 60 E., M.D.B. & M., CITY OF LAS VEGAS, STATE OF NEVADA



- LEGEND:**
- MONUMENTS FOUND OR REESTABLISHED FROM TIES PER DESERT SHORES N°1 (BK. 34, PG. 26), OR AS NOTED.
  - SET 3/8" REBAR + PLASTIC CAP, R.L.S. 719.0.
  - SET 3/8" REBAR + AL. CAP, R.L.S. 719.0 WITH BRASS CAP TIES IN TOP OF CURVE.
  - (R) RADIAL LINE BEARING.
  - C1 CURVE DATA (SEE TABLE - SHEET 3)
  - L1 LINE DATA (SEE TABLE - SHEET 3)
  - T TYPICAL LOT NUMBER.
  - ① BUILDING SETBACK LINE (10' FRONT, 10' REAR (CORNER, 5' SIDE).

- NOTES:**
1. BOUNDARY DIMENSIONS AS SHOWN HEREON ARE PER PARCEL MAP FILE 59, PAGE 45, AND MEASURED.
  2. THERE SHALL BE NO DIRECT VEHICULAR ACCESS TO BREAKWATER DRIVE FROM ADJUTING LOTS.
  3. LOTS "A", "M", "O" COMMON AREAS SHALL BECOME PART OF AND TO BE MAINTAINED BY DESERT SHORES MASTER DEVELOPMENT ASSOCIATION. TOTAL AREA LOT "A" = 1621 80. FT.

SCALE: 1" = 60'