

**LEGEND**

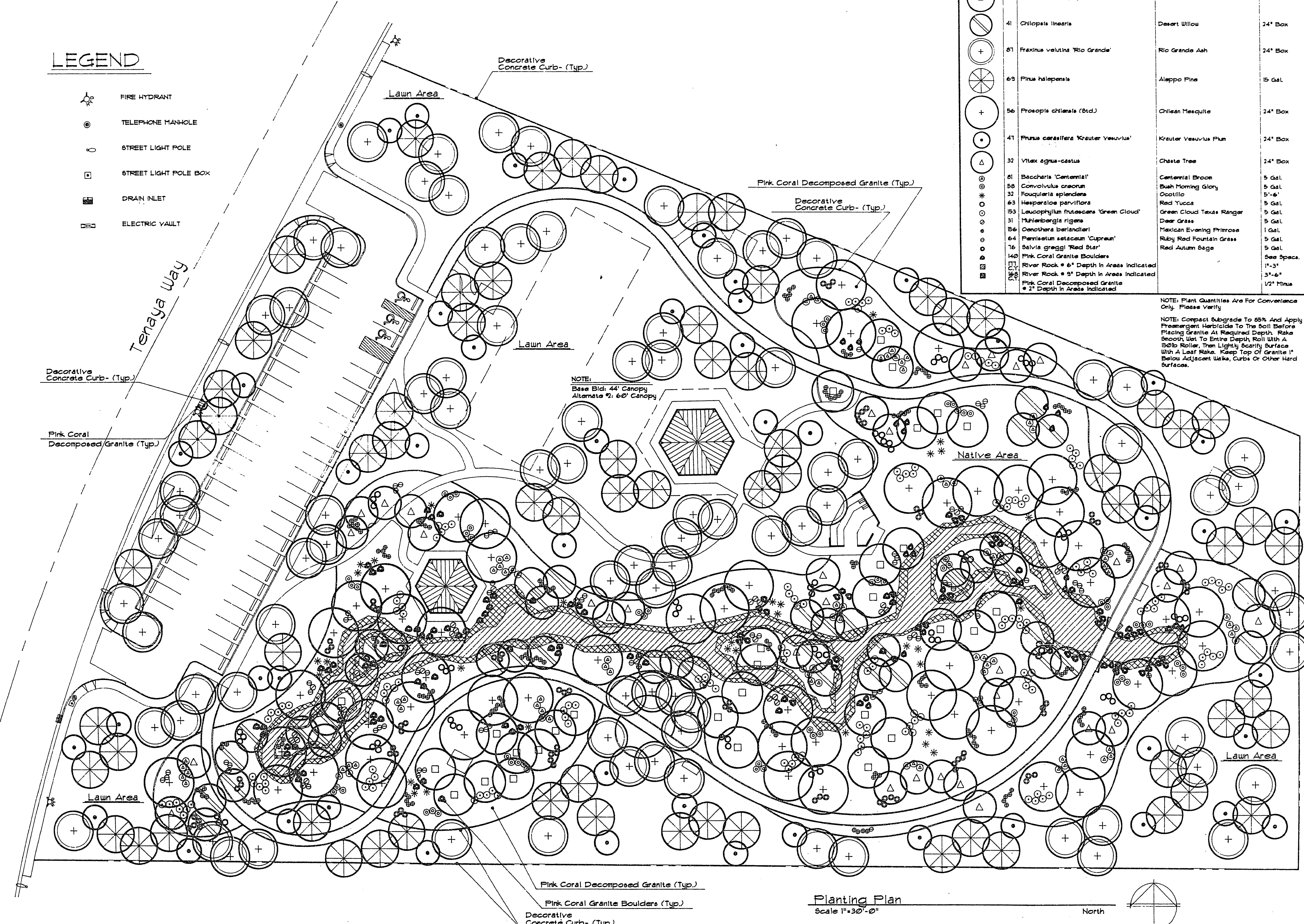
- FIRE HYDRANT
- TELEPHONE MANHOLE
- STREET LIGHT POLE
- STREET LIGHT POLE BOX
- DRAIN INLET
- ELECTRIC VAULT

PLANTING LEGEND				
SYMBOL	QTY	SPECIES NAME	COMMON NAME	SIZE
	30	Cercidium microphyllum	Little-leaf Palo Verde	24" Box
	41	Chilopsis linearis	Desert Willow	24" Box
	81	Fraxinus velutina 'Rio Grande'	Rio Grande Ash	24" Box
	65	Pinus halepensis	Allepjo Pine	15 Gal.
	56	Prosopis chilensis (Std.)	Chilean Mesquite	24" Box
	41	Fraxus caroliniana 'Krauter Vesuvius'	Krauter Vesuvius Plum	24" Box
	32	Vitex agnus-castus	Chaste Tree	24" Box
	81	Baccharis 'Centennial'	Centennial Broom	5 Gal.
	58	Convolvulus anacrus	Bush Morning Glory	5 Gal.
	32	Fouquieria splendens	Cholla	5'-6"
	63	Hesperaloe parviflora	Red Yucca	5 Gal.
	93	Leucophyllum frutescens 'Green Cloud'	Green Cloud Texas Ranger	5 Gal.
	31	Muhlenbergia rigens	Deer Grass	5 Gal.
	86	Cenchrus berlandieri	Hispanic Evening Primrose	1 Gal.
	64	Pennisetum setaceum 'Cypress'	Ruby Red Fountain Grass	5 Gal.
	76	Salvia greggii 'Red Star'	Red Autumn Sage	5 Gal.
	140	Pink Coral Granite Boulders		See Specs.
	165	River Rock - 6" Depth In Areas Indicated		1'-3"
	165	River Rock - 9" Depth In Areas Indicated		3'-6"
	165	Pink Coral Decomposed Granite		1/2" Minus
	165	Pink Coral Decomposed Granite		2" Depth In Areas Indicated

NOTE: Plant Quantities Are For Convenience Only. Please Verify.

NOTE: Compact Subgrade To 85% And Apply A Preemergent Herbicide To The Soil Before Placing Granite At Required Depth. Rake Smooth, Wet To Entire Depth, Roll With A 150lb Roller, Then Lightly Scarify Surface With A Leaf Rake. Keep Top Of Granite 1" Below Adjacent Walks, Curbs Or Other Hard Surfaces.

NOTE:  
Base Bld. 44' Canopy  
Alternate 2: 60' Canopy



Planting Plan  
Scale 1"=30'-0"

REVISIONS			
REV	DESCRIPTION	DATE	BY

© DOMINGO CAMBEIRO CORPORATION 1994

CITY OF LAS VEGAS  
DEPARTMENT OF PUBLIC WORKS  
ARCHITECTURAL SERVICES SECTION  
CITY ENGINEER: DENNIS ANDERSON, P.E.

All designs, arrangements and plans indicated or presented by this drawing, as instruments of service, are owned by and the property of DOMINGO CAMBEIRO CORPORATION. The plans and/or specifications shall be restricted to the original site for which they were prepared and publication therefore is expressly limited to such use. Reproduction, publication or re-use by any method in whole or in part is prohibited. None of such designs, arrangements or plans shall be used by or disclosed to any person, firm, agency, or corporation without the written permission of DOMINGO CAMBEIRO CORPORATION. Visual contact with these plans and specifications shall constitute prima facie evidence of acceptance of these restrictions.

SEAL

DOMINGO CAMBEIRO  
REGISTERED PROFESSIONAL ENGINEER  
NO. 42-144

DRAWN BY	CML
CHECKED BY	CML
ISSUED DATE	FEBRUARY 1994

OPEN SPACE EAST  
PLANTING PLAN

LAS VEGAS TECHNOLOGY CENTER  
OPEN SPACES AND ENTRY FEATURES,  
PHASE II AND III

**Domingo Cambeiro Corporation**  
ARCHITECTURE • ENGINEERING • PLANNING • INTERIORS  
3555 PECOS-MCLEOD IC.  
LAS VEGAS, NEVADA 89121-3805  
(702) 732-0084

SHEET NO.	L1.01
JOB NO.	93197
FILE NO.	530-VIJ

"AS-BUILT"