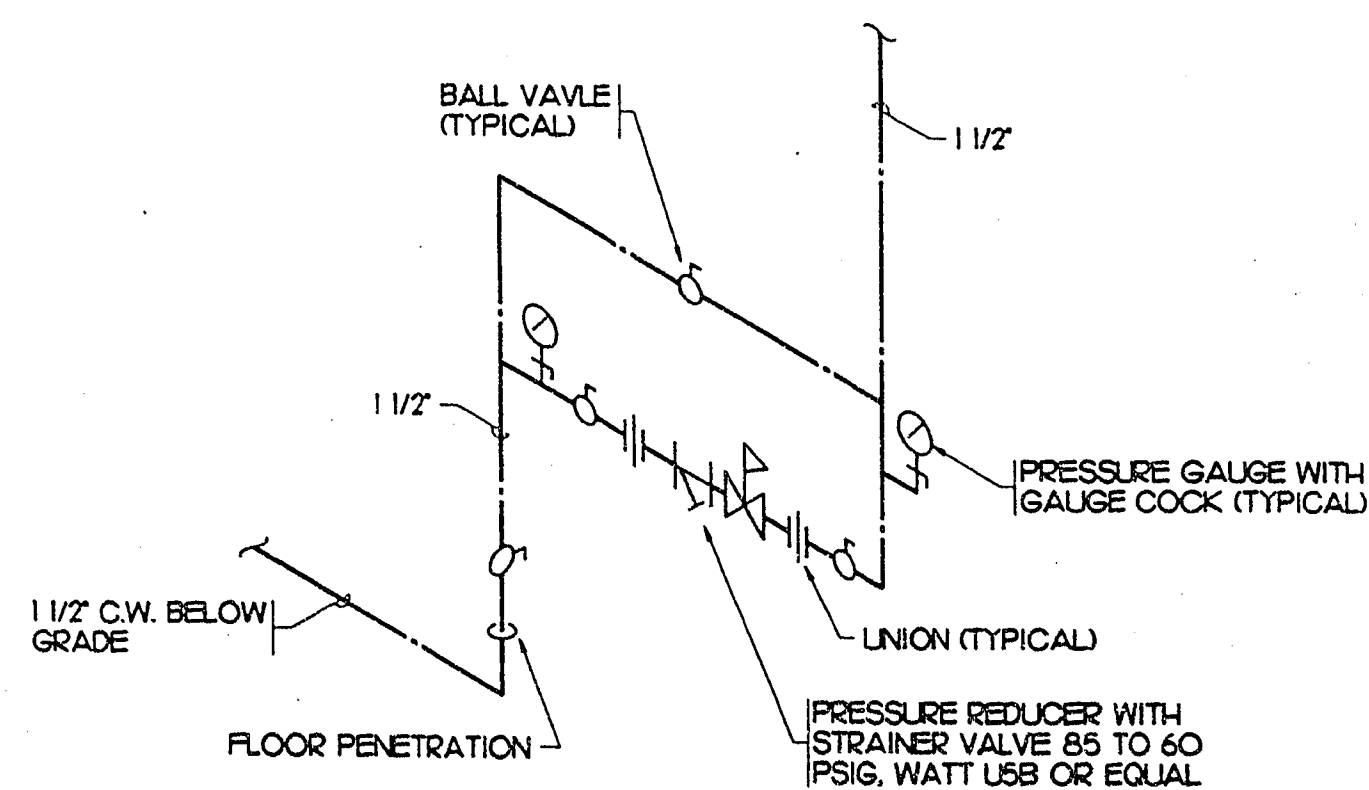


RESTROOM PLUMBING PLAN
SCALE: 1/4" = 1'-0"



1 PRESSURE REDUCING STATION
P1.01 NOT TO SCALE

PLUMBING LEGEND		
SYMBOL	ABBEV.	DESCRIPTION
---		WASTE OR DRAIN BELOW SLAB
---	S OR W	SOIL OR WASTE ABOVE SLAB
---	V	VENT
---	C.W.	COLD WATER
⊗	F.C.O.	FLOOR CLEAN-OUT
⊥	C.O.	CLEANOUT
⊥	DN	DOWN OR DROP
⊥	UP	RISE OR RISER
⊥		VALVE ON RISER
⊥	TP	TRAP PRIMER W/BALL VALVE UPSTREAM
⊥	WHA	WATER HAMMER ARRESTOR (WHA-) (LETTER DESIGNATES PDI SIZING)
⊥	FD	FLOOR DRAIN
⊗	P.O.C.	POINT OF CONNECTION
⊥	FT	FEET OR FOOT
⊥	P.S.I.	POUNDS PER SQUARE INCH
⊥	UP.C.	UNIFORM PLUMBING CODE
⊥	FU	FIXTURE UNIT

PLUMBING FIXTURE SCHEDULE							
SYMBOL	FIXTURE	ROUGH-IN (INCHES)					REMARKS
		HW	CW	S OR W	TRAP	V	
WC-1	WATER CLOSET (HANDICAP)	-	1'	4'	INTEGRAL	2'	STAINLESS STEEL WALL HUNG (HANDICAP)
WC-2	WATER CLOSET	-	1'	4'	INTEGRAL	2'	STAINLESS STEEL WALL HUNG
LH	URINAL	-	3/4'	2'	INTEGRAL	1 1/2'	STAINLESS STEEL WALL HUNG
LF	LAVATORY	-	1/2'	1 1/2'	1 1/4' X 1 1/2'	1 1/2'	STAINLESS STEEL WALL HUNG
DF	DRINKING FOUNTAIN	-	1/2'	1 1/2'	1 1/4' X 1 1/2'	1 1/2'	HANDICAP
ED	FLOOR DRAIN	-	-	-	REFER TO DRAWING FOR EXACT SIZING		
HB	HOSE BIBB	-	3/4'	-	-	-	

FIXTURE SPECIFICATIONS	
SYMBOL	MANUFACTURER & MODEL NO.
WC-1	WATER CLOSET - AGOR MODEL 205 WITH 1/2" PVT SIPHON, 16 GAUGE, TYPE 304 STAINLESS STEEL, WALL HUNG, WITH OPEN FRONT HINGED SEAT, CONCEALED FLUSH VALVE, CHAIR CARRIER, HANDICAP ACCESSIBLE (METCRAFT APPROVED EQUAL)
WC-2	WATER CLOSET - SAME AS WC-1 EXCEPT NOT HANDICAP.
LH	URINAL - AGOR MODEL 207 WITH 1/2" WASHER, 16 GAUGE, TYPE 304 STAINLESS STEEL, WALL HUNG WITH CONCEALED FLUSH VALVE (METCRAFT APPROVED EQUAL)
LF	LAVATORY - AGOR MODEL 192 WITH 1/2" WASHER, 16 GAUGE, TYPE 304 STAINLESS STEEL, WALL HUNG, BARRIER FREE, GRID STRAINER WITH CLOSE ELBOW FOR CONCEALED P-TRAP, AIR-TROL VALVE COLD WATER ONLY WITH DECK MOUNTED SPOUT (METCRAFT APPROVED EQUAL)
DF	DRINKING FOUNTAIN - WESTERN MODEL 88 NO 2-B LEVEL, SUNROC MODEL # BARRIER FREE, FREEZE RESISTANT (NO EQUAL) SF 8385
ED	FLOOR DRAIN - JAY R. SMITH #2005A, CAST IRON BODY WITH ADJUSTABLE STRAINER & TRAP PRIMER CONNECTION.
HB	HOSE BIBB - WOODFORD MODEL Y24 WITH LOOSE KEY HANDLE AND VACUUM BREAKER.

WATER PIPE SIZING INFORMATION					
STATIC HEAD = 4 FT. X .43 = 1.72 PSI					
PRESSURE AVAIL = 50 (SERVICE PRESS.) - (1.72 + 25 (REQ. PRESS.) + 0 (METER)) = 23.28 PSI					
LONGEST RUN = 36 FT.					
50% FITTING LENGTH = 18 FT.					
TOTAL LENGTH = 54 FT.					
ALLOWABLE FRICTION LOSS/100 FT. = 23.28 (100) = 43.1 PSI					
PIPE SIZE	MAX. FLOW (GPM)	FLUSH TANK FU	FLUSH VALVE FU	VELOCITY	TABLE VALUES FROM U.P.C. APPENDIX A
1/2"	2.5	2	-	4 F.P.S.	
3/4"	7.0	8	-	5 F.P.S.	
1"	14.0	20	-	6 F.P.S.	
1 1/4"	25.0	42	8	7 F.P.S.	
1 1/2"	45.0	100	37	8 F.P.S.	
2"	75.0	245	124	8 F.P.S.	

REVISIONS			
REV	DESCRIPTION	DATE	BY

© DOMINGO CAMBEIRO CORPORATION 1994

DO NOT SCALE DRAWINGS

All designs, arrangements and plans indicated or presented by this drawing, as instruments of service, are owned by and the property of DOMINGO CAMBEIRO CORPORATION. The plans and/or specifications shall be restricted to the original site for which they were prepared and publication therefore is expressly limited to such use. Reproduction, publication or re-use by any method in whole or in part, is prohibited. None of such designs, arrangements or plans shall be used by or disclosed to any person, firm, agency, or corporation without the written permission of DOMINGO CAMBEIRO CORPORATION. Visual contact with these plans and specifications shall constitute prima facie evidence of acceptance of these restrictions.

SEAL	
DRAWN BY	T.C.P.
CHECKED BY	G.M.
ISSUED DATE	FEBRUARY 1994

RESTROOM
PLUMBING PLAN

LAS VEGAS TECHNOLOGY
CENTER
OPEN SPACES AND ENTRY FEATURES, PHASE II AND III

Domingo Cambeiro Corporation
ARCHITECTURE • ENGINEERING • PLANNING • INTERIORS
3555 PECOS-McLEOD IC, LAS VEGAS, NEVADA 89121-3805 (702) 732-0084

SHEET NO.	P1.01
JOB NO.	530-V1J
FILE NO.	PV9282792827911 2/19/94 1145

"As-Built"