

LAS VEGAS VALLEY WATER DISTRICT STANDARD NOTES

- NO WORK SHALL BEGIN UNTIL THE WATER PLANS HAVE BEEN RELEASED FOR CONSTRUCTION BY THE LVVWD. FOLLOWING WATER PLAN APPROVAL, 48 HOUR NOTICE SHALL BE GIVEN TO THE LVVWD COMMUNICATION SUPPORT CENTER (259-7171) PRIOR TO THE START OF CONSTRUCTION. NOTICE MUST BE GIVEN BY 2:00 PM THE BUSINESS DAY PRIOR TO A LVVWD INSPECTION.
- ALL WORK SHALL CONFORM TO LVVWD STANDARD PLATES, DRAWINGS, SPECIFICATIONS AND THE UNIFORM DESIGN & CONSTRUCTION STANDARDS FOR WATER DISTRIBUTION SYSTEMS (UDACS), LATEST EDITION.
- ALL WORK, EXCEPT AS MODIFIED BY THESE PLANS OR BY NOTE 2, SHALL BE DONE IN ACCORDANCE WITH THE MOST CURRENT DRAFT OR EDITION OF THE UNIFORM STANDARD SPECIFICATIONS FOR PUBLIC WORKS CONSTRUCTION, OFFSITE IMPROVEMENTS, CLARK COUNTY AREA.
- A SINGLE PIPE MATERIAL SHALL BE USED THROUGHOUT THE PROJECT UNLESS OTHERWISE APPROVED BY THE LVVWD.
- ALL SERVICE LATERALS TWO (2) INCHES IN DIAMETER AND SMALLER SHALL BE COPPER TUBING WITH LVVWD APPROVED SERVICE SADDLES.
- ALL WATER METER BOXES SHALL BE LOCATED OUTSIDE OF DRIVEWAY AREAS.
- ALL VALVES SHALL BE LOCATED OUTSIDE OF DRIVEWAYS, VALLEY AND CURB CUTTERS.
- THE FOLLOWING REQUIREMENTS MUST BE MET IN THE EVENT A WATER LINE AND SANITARY OR STORM SEWER LINE CROSS:
 - A MINIMUM EIGHTEEN (18) INCH VERTICAL SEPARATION (OUTSIDE TO OUTSIDE) MUST BE MAINTAINED WHEN A WATER LINE IS INSTALLED OVER A SANITARY OR STORM SEWER LINE. IF THE VERTICAL SEPARATION CANNOT BE MAINTAINED OR THE WATER LINE MUST BE PLACED UNDER THE SANITARY OR STORM SEWER LINE, THE SANITARY OR STORM SEWER LINE MUST BE CONSTRUCTED WITH ONE OF THE FOLLOWING OR AS SHOWN ON THESE PLANS:
 - POTABLE WATER SUPPLY QUALITY MATERIAL
 - ENCASEMENT, WITH FOUR (4) INCH CONCRETE (MINIMUM)
 - SLEEVING WITH POTABLE WATER SUPPLY QUALITY PIPE

- POTABLE WATER SUPPLY QUALITY MATERIAL
 - ENCASEMENT, WITH FOUR (4) INCH CONCRETE (MINIMUM)
 - SLEEVING WITH POTABLE WATER SUPPLY QUALITY PIPE
- EACH PROMSION MUST EXTEND ALONG THE SANITARY OR STORM SEWER, ON EITHER SIDE OF THE MAIN, A MINIMUM 10 FOOT DISTANCE PERPENDICULAR TO THE WATER MAIN EXTERIOR.
- WARNING TAPE SHALL BE REQUIRED OVER ALL MAINS, ALL SIX (6) INCH DIAMETER AND LARGER SERVICE LATERALS AND ANY SERVICE LATERAL NOT INSTALLED PERPENDICULAR TO THE MAIN IN ACCORDANCE WITH STANDARD PLATE No. 27.
 - ALL WATER FACILITIES SHALL BE FILLED, DISINFECTED, PRESSURE TESTED, FLUSHED, FILLED AND AN ACCEPTABLE WATER SAMPLE OBTAINED, PRIOR TO CONNECTION TO THE LVVWD'S DISTRIBUTION SYSTEM.
 - THE CONTRACTOR MUST OBTAIN ALL METERS TWO (2) INCHES AND SMALLER FROM LVVWD CENTRAL STORES. TELEPHONE 259-3152 FORTY-EIGHT (48) HOURS PRIOR TO PICKUP.
 - CONSTRUCTION MAY INTERRUPT SERVICE WITH LVVWD APPROVAL AND PRIOR NOTIFICATION. BETWEEN THE HOURS OF 10 PM AND 8 AM, SUNDAY THRU THURSDAY. CIRCUMSTANCES MAY REQUIRE TEMPORARY SERVICE FEEDS BE INSTALLED WITHOUT LVVWD REIMBURSEMENT. ANY TEMPORARY SERVICE FEED MUST HAVE PRIOR LVVWD APPROVAL.
 - ALL WATER FACILITY CONSTRUCTION MATERIALS USED, MUST BE AS LISTED ON THE LVVWD'S PRE-APPROVED MATERIALS AND MANUFACTURERS LISTING FOR NEW FACILITIES, LATEST REVISION, OR SPECIFICALLY APPROVED ON THESE PLANS.

A MINIMUM EIGHTEEN (18) INCH VERTICAL SEPARATION (OUTSIDE TO OUTSIDE) MUST BE MAINTAINED WHEN A WATER LINE IS INSTALLED OVER A SANITARY OR STORM SEWER LINE. IF THE VERTICAL SEPARATION CANNOT BE MAINTAINED OR THE WATER LINE MUST BE PLACED UNDER THE SANITARY OR STORM SEWER LINE, THE SANITARY OR STORM SEWER LINE MUST BE CONSTRUCTED WITH ONE OF THE FOLLOWING OR AS SHOWN ON THESE PLANS:

REDUCE PRESSURE PRINCIPLE ASSEMBLY: (1) 1 1/2" (2) 2"

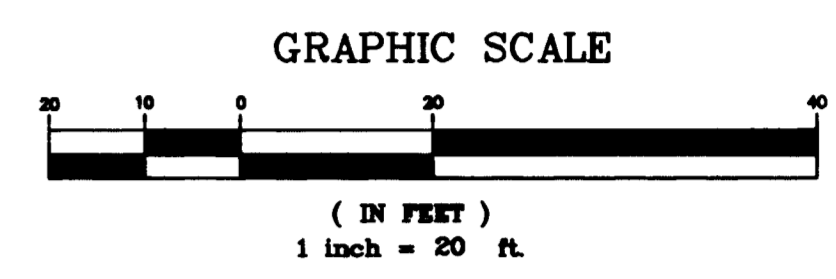
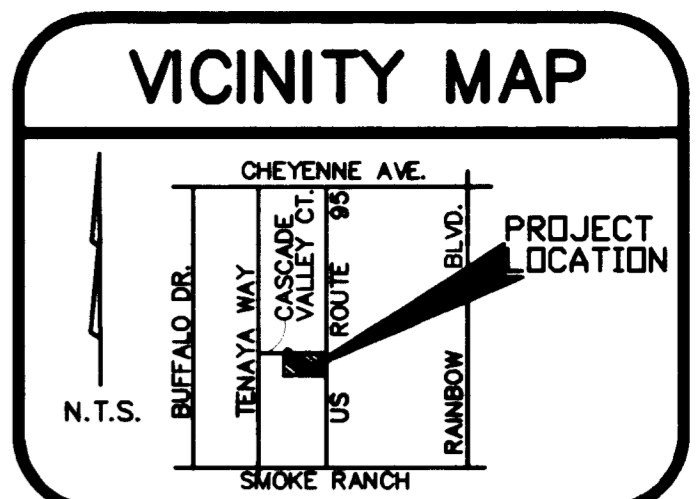
APPROVED REDUCE PRESSURE PRINCIPLE ASSEMBLY(S) SHALL BE INSTALLED PER THE UDACS PLATE NO. 11A. NO WATER SHALL BE TAKEN FROM A SERVICE REQUIRING A BACKFLOW PREVENTION UNIT. THE REDUCED PRESSURE PRINCIPLE ASSEMBLY HAS BEEN SUCCESSFULLY TESTED BY THE LVVWD. ANY BLOCK WALL OR OTHER FENCE MATERIALS SHALL BE DESIGNED AND CONSTRUCTED AROUND THE OUTSIDE OF THE EASEMENT(S) TO ALLOW THE DISTRICT DIRECT ACCESS FROM THE ADJACENT RIGHT-OF-WAY.

DOUBLE CHECK DETECTOR ASSEMBLY: DUAL 6"

THE DOUBLE CHECK DETECTOR ASSEMBLY SHALL BE INSTALLED IN ACCORDANCE WITH THE UDACS PLATE NO. 20B. ANY BLOCK WALL OR OTHER FENCE MATERIALS SHALL BE DESIGNED AND CONSTRUCTED AROUND THE OUTSIDE OF THE EASEMENT(S) TO ALLOW THE DISTRICT DIRECT ACCESS FROM THE ADJACENT RIGHT-OF-WAY.

PRESSURE NOTE:

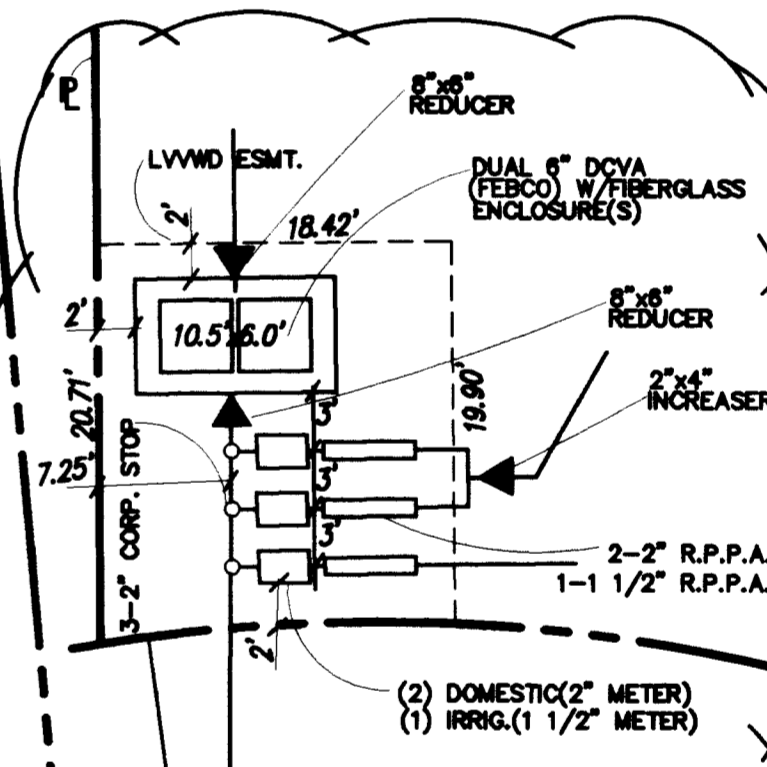
THIS PROPERTY MAY HAVE STATIC PRESSURE IN EXCESS OF 80 PSI. THE UNIFORM PLUMBING CODE REQUIRES THAT INDIVIDUAL, ON-SITE (PRIVATE), PRESSURE REDUCING VALVES BE INSTALLED WHENEVER THE PRESSURE EXCEEDS 80 PSI. PRV'S ARE THE DEVELOPER'S RESPONSIBILITY AND WILL NOT BE INSPECTED OR INCLUDED IN THE ACCEPTANCE OF LVVWD FACILITIES.



SEWER CONTRIBUTION

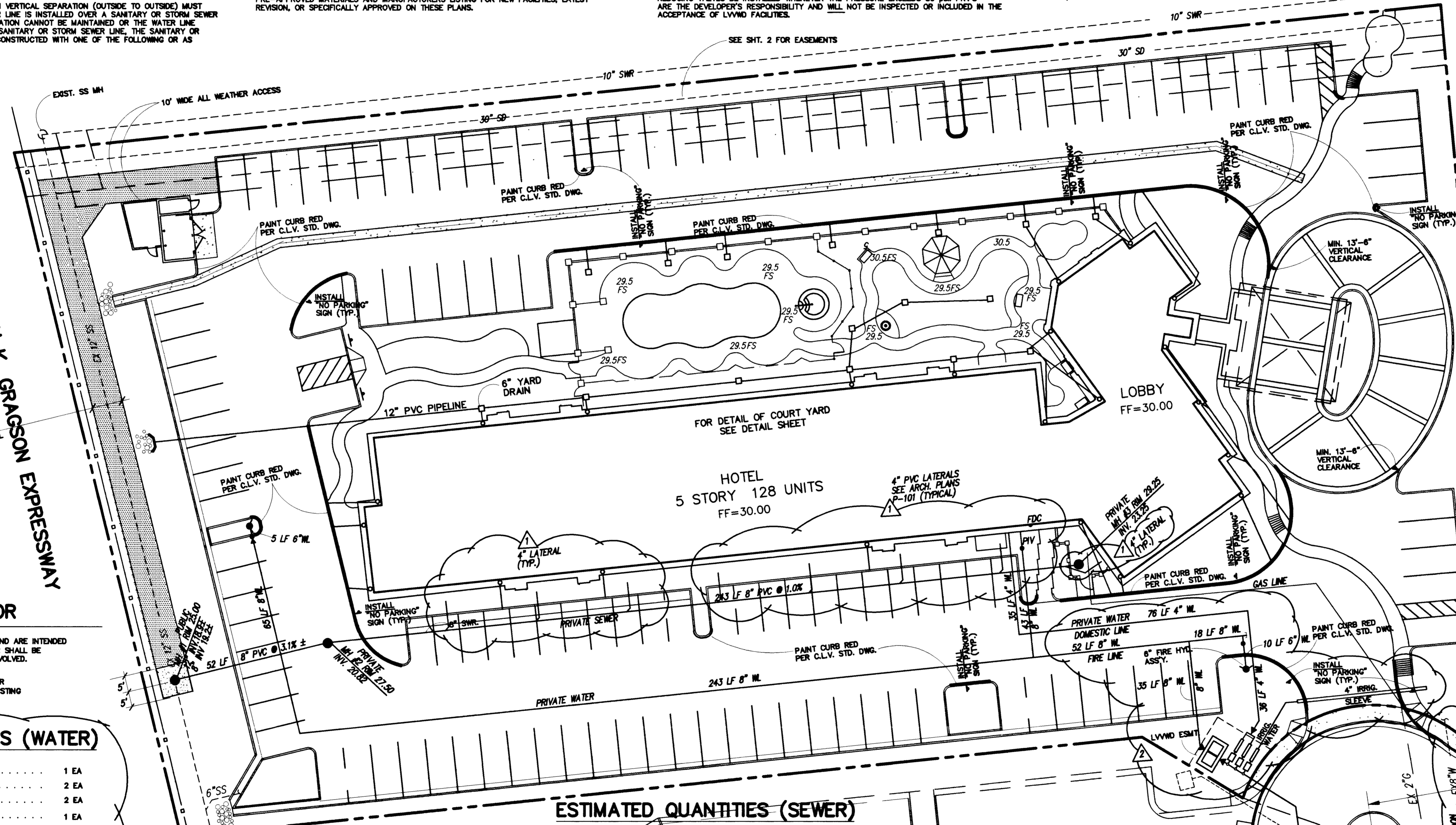
COMMERCIAL TYPE C:
 128
 EQUIVALENT x 0.45 x 250 GPD = 19,200
 PEAKING FACTOR = 3.6 (FROM TABLE C, PG T-3)
 PEAK FLOW: 19,200 x 3.6 = 69,120 GPD

LOT E
 FILE 79, PAGE 31
 OF SURVEYS
 (UNDEVELOPED)



WATER DETAIL
 SCALE: 1"=10'

ORAN K. GRAGSON EXPRESSWAY



NOTE TO CONTRACTOR

QUANTITIES SHOWN ARE APPROXIMATIONS ONLY AND ARE INTENDED TO ILLUSTRATE SCOPE OF WORK. THE CONTRACTOR SHALL BE RESPONSIBLE FOR VERIFYING EXACT QUANTITIES INVOLVED.

PRIOR TO THE EXCAVATION OF ANY ON-SITE SEWER OR WATER CONTRACTOR SHALL DETERMINE THE EXISTING LINES HORIZONTAL & VERTICAL LOCATION

ESTIMATED QUANTITIES (WATER)

1	WET TAP, TAPPING TEE & TAPPING VALVE	1 EA
2	2" WATER METER PER UDS PLATE 1D	2 EA
3	2" RPPA PER UDS PLATE 11A	2 EA
4	1 1/2" METER PER UDS PLATE 1D	1 EA
5	1 1/2" RPPA PER UDS PLATE 11A	1 EA
6	2-2" TO 1-4" BAFFLE	1 EA
7	8" TO 6" REDUCER	4 EA
8	FIRE HYDRANT PER UDS PLATE 7	2 EA
9	POST INDICATOR VALVE (PIV)	1 EA
10	8" WATER LINE	513 LF
11	4" WATER LINE	147 LF
12	NOT USED	
13	NOT USED	
14	6" WATER LINE	15 LF
15	6" DUAL DODA PER FEBCO 880 W/ENCLOSURES	2 EA
16	6" GATE VALVE PER UDS PLATE 8	2 EA

FIRE FLOW CALCULATIONS

FIRE FLOW REQUIREMENT IS: 1875 GALLONS PER MINUTE AT 20 PSI RESIDUAL PRESSURE

BASED ON: 50% REDUCTION DUE TO BLDG. BEING SPRINKLERED

SQUARE FOOTAGE	69,390	SQUARE FEET
LARGEST AREA BETWEEN 4-HOUR AREA SEPARATION WALLS	69,390	SQUARE FEET
BUILDING HEIGHT:	65.83	FEET
NUMBER OF STORIES:	5	FLOOR
TYPE OF CONSTRUCTION:	TYPE III-IHR	
OCCUPANCY:	HOTEL	
FULL AUTOMATIC FIRE SPRINKLER SYSTEM:	YES	

REVIEWED BY: BARRY BENDER

ESTIMATED QUANTITIES (SEWER)

MANHOLES PER STD. DWG. NO. SD-1	3 EA
8" SEWER LINE	295 LF
CONNECTION TO EXIST. SEWER	1 EA
6" SEWER LATERALS	80 LF

ABANDONED VALVE CUT AND CAP

ALL VALVES TO BE ABANDONED IN THE CLOSED POSITION, UNLESS SHOWN OTHERWISE, BY REMOVING A MINIMUM OF THE TOP 12 INCHES OF THE VALVE BOX AND THEN FILLING THE REMAINING PORTION OF THE VALVE BOX WITH CONCRETE HAVING A COMPRESSIVE STRENGTH OF AT LEAST 2,000 PSI

THE CONTRACTOR SHALL CUT THE EXISTING PIPE 3" + BEYOND THE ABANDONED VALVE AND INSTALL A CAP, WHERE A JOINT OR COUPLING IN THE EXISTING PIPE IS UNCOVERED AT THE CUT AND CAP LOCATION, THE INSTALLATION OF A PLUG MAY BE PERMITTED WITH DISTRICT APPROVAL. THE CONTRACTOR SHALL INSTALL A CONCRETE THRUST BLOCK IN ACCORDANCE WITH THE PROVISIONS OF THE UDACS PLATE NO. 5 AT ALL CAP OR PLUG LOCATIONS.

HAMPTON INN
 (UNDER CONSTRUCTION)
 (EX. FF=28.50)

Signature
 CITY OF LAS VEGAS FIRE MARSHAL 2-14-98 DATE

APPROVED FOR CONSTRUCTION
 1ST 111-1-05-98
Signature 2-19-98
 LAS VEGAS VALLEY WATER DISTRICT DATE

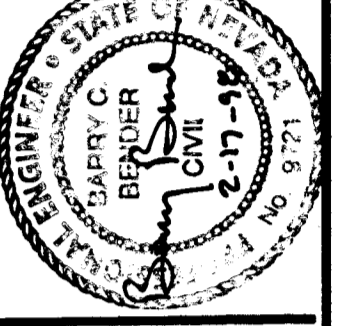
Call Before You OVERHEAD
 1-702-593-6111

Call Before You UNDERGROUND
 1-800-227-2600

02/06/98
 12/02/97
 10/14/97
 10/13/97
 10/06/97
 09/25/97

UTILITY PLAN
 LA QUINTA INNS, INC.
 CASCADE VALLEY COURT

C-301
 3
 SHEET 3 OF 6 SHEETS



DMC Engineering
 Civil • Surveying • Planning
 500 N. RAINBOW SUITE 300
 Las Vegas, NV 89107
 (702) 221-1912 FAX (702) 221-2009
 DRAWING FILE LOCATION: G:\CAD\URBS\67767\62.DWG



NEVADA

CITY OF LAS VEGAS

107-VZ832

