

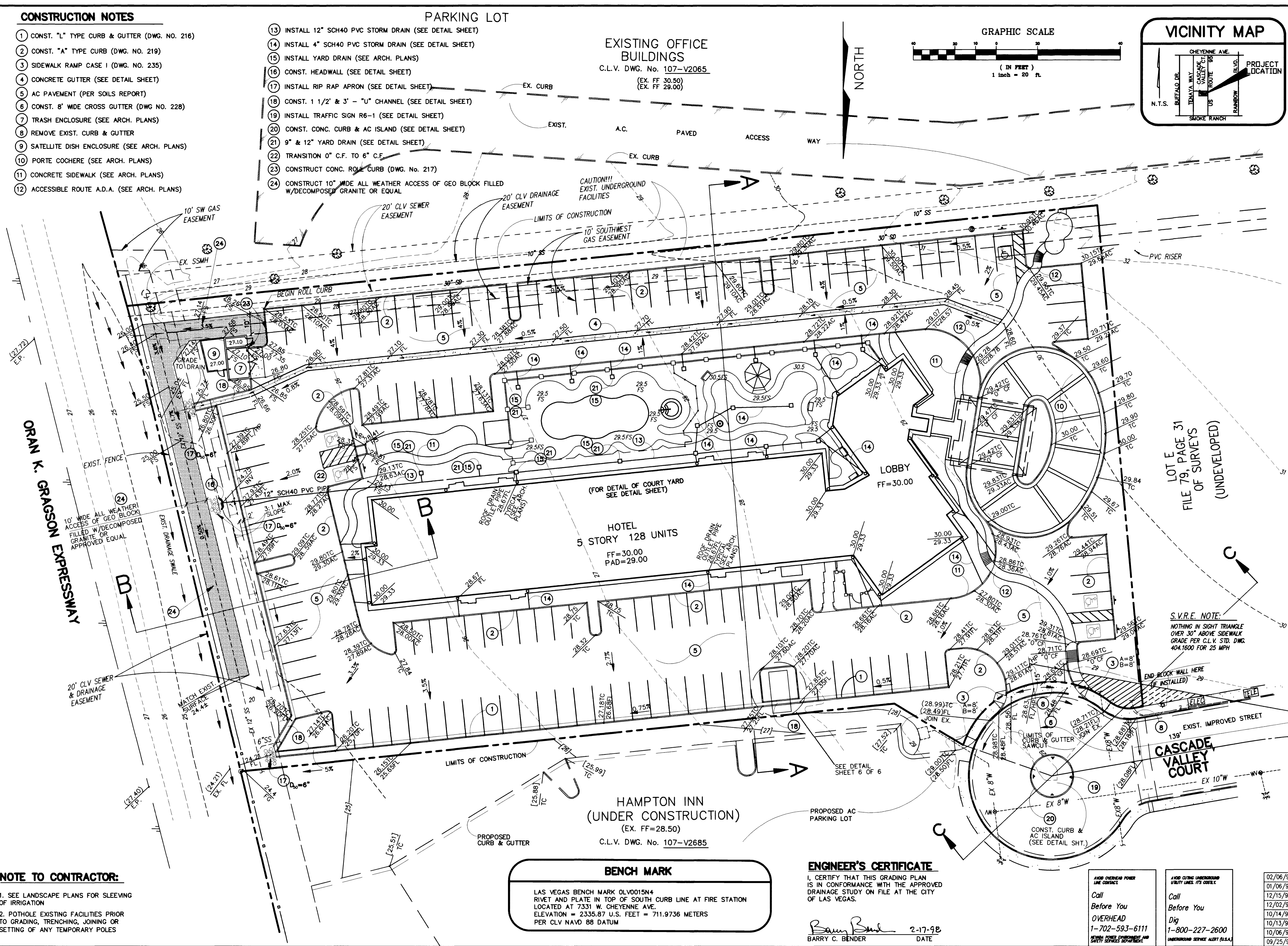
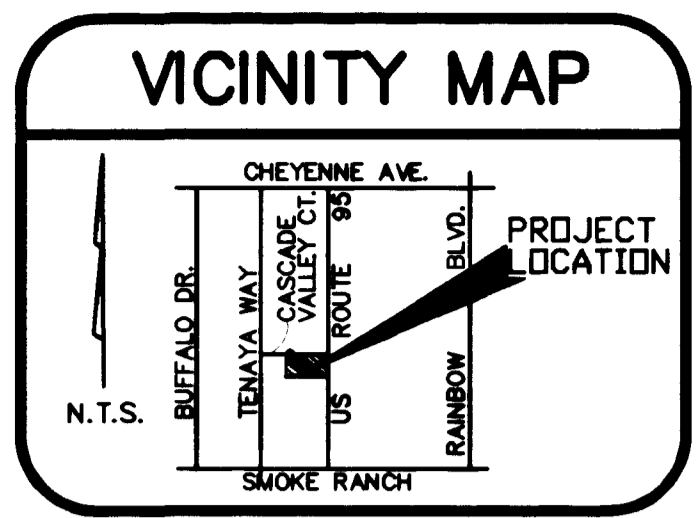
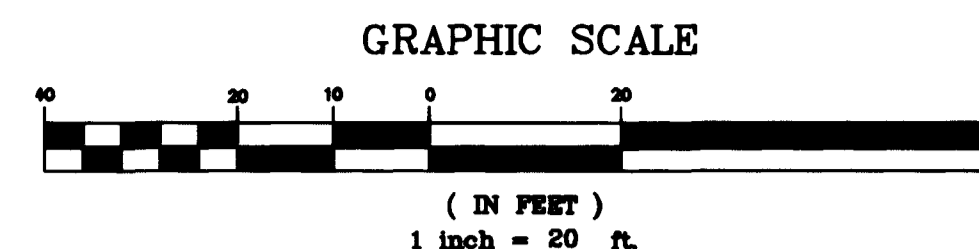
CONSTRUCTION NOTES

- 1 CONST. "L" TYPE CURB & GUTTER (DWG. NO. 216)
- 2 CONST. "A" TYPE CURB (DWG. NO. 219)
- 3 SIDEWALK RAMP CASE 1 (DWG. NO. 235)
- 4 CONCRETE GUTTER (SEE DETAIL SHEET)
- 5 AC PAVEMENT (PER SOILS REPORT)
- 6 CONST. 8" WIDE CROSS GUTTER (DWG. NO. 228)
- 7 TRASH ENCLOSURE (SEE ARCH. PLANS)
- 8 REMOVE EXIST. CURB & GUTTER
- 9 SATELLITE DISH ENCLOSURE (SEE ARCH. PLANS)
- 10 PORTE COCHERE (SEE ARCH. PLANS)
- 11 CONCRETE SIDEWALK (SEE ARCH. PLANS)
- 12 ACCESSIBLE ROUTE A.D.A. (SEE ARCH. PLANS)

- 13 INSTALL 12" SCH40 PVC STORM DRAIN (SEE DETAIL SHEET)
- 14 INSTALL 4" SCH40 PVC STORM DRAIN (SEE DETAIL SHEET)
- 15 INSTALL YARD DRAIN (SEE ARCH. PLANS)
- 16 CONST. HEADWALL (SEE DETAIL SHEET)
- 17 INSTALL RIP RAP APRON (SEE DETAIL SHEET)
- 18 CONST. 1 1/2" & 3" - "U" CHANNEL (SEE DETAIL SHEET)
- 19 INSTALL TRAFFIC SIGN R6-1 (SEE DETAIL SHEET)
- 20 CONST. CONC. CURB & AC ISLAND (SEE DETAIL SHEET)
- 21 9" & 12" YARD DRAIN (SEE DETAIL SHEET)
- 22 TRANSITION 0" C.F. TO 6" C.F.
- 23 CONSTRUCT CONC. ROLL CURB (DWG. NO. 217)
- 24 CONSTRUCT 10" WIDE ALL WEATHER ACCESS OF GEO BLOCK FILLED W/DECOMPOSED GRANITE OR EQUAL

PARKING LOT

EXISTING OFFICE BUILDINGS
C.L.V. DWG. No. 107-V2065
(EX. FF 30.50)
(EX. FF 29.00)



ORAN K. GRAGSON EXPRESSWAY

LOT E
FILE 79, PAGE 31
OF SURVEYS
(UNDEVELOPED)

S.V.R.E. NOTE:
NOTHING IN SIGHT TRIANGLE
OVER 30" ABOVE SIDEWALK
GRADE PER C.L.V. STD. DWG.
404.1600 FOR 25 MPH

NOTE TO CONTRACTOR:

1. SEE LANDSCAPE PLANS FOR SLEEVING OF IRRIGATION
2. POTHOLE EXISTING FACILITIES PRIOR TO GRADING, TRENCHING, JOINING OR SETTING OF ANY TEMPORARY POLES

BENCH MARK

LAS VEGAS BENCH MARK 0LV0015N4
RIVET AND PLATE IN TOP OF SOUTH CURB LINE AT FIRE STATION
LOCATED AT 7331 W. CHEYENNE AVE.
ELEVATION = 2335.87 U.S. FEET = 711.9736 METERS
PER CLV NAVD 88 DATUM

ENGINEER'S CERTIFICATE

I, CERTIFY THAT THIS GRADING PLAN IS IN CONFORMANCE WITH THE APPROVED DRAINAGE STUDY ON FILE AT THE CITY OF LAS VEGAS.

Barry C. Bender 2-17-98
BARRY C. BENDER DATE

02/06/98	01/06/98
01/06/97	12/15/97
12/02/97	10/14/97
10/13/97	10/13/97
10/06/97	09/25/97

DATE: _____
REVISIONS: _____

DMC Engineering & Planning
Civil • Surveying • Planning
500 N. RAINBOW SUITE 300
LAS VEGAS, NV 89107
(702) 221-1912 FAX (702) 221-3009
DRAWING FILE LOCATION: C:\ACAD\98\67\67TAG2.DWG

NEVADA

GRADING AND DRAINAGE PLAN

LA QUINTA INNS, INC.
CASCADE VALLEY COURT

CITY OF LAS VEGAS

C-201
2
SHEET 2 OF 6 SHEETS
107-V2.832

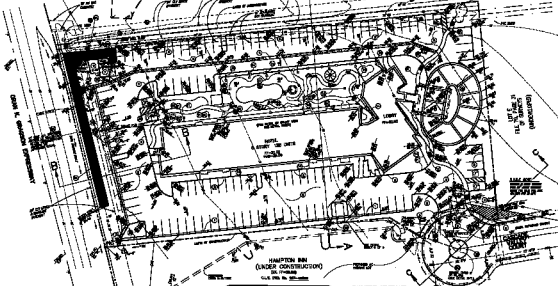
CONSTRUCTION NOTES

- 1. SHALL 1" FOR EACH 10' OF DISTANCE FROM THE
- 2. SHALL 1" FOR EACH 10' OF DISTANCE FROM THE
- 3. SHALL 1" FOR EACH 10' OF DISTANCE FROM THE
- 4. SHALL 1" FOR EACH 10' OF DISTANCE FROM THE
- 5. SHALL 1" FOR EACH 10' OF DISTANCE FROM THE
- 6. SHALL 1" FOR EACH 10' OF DISTANCE FROM THE
- 7. SHALL 1" FOR EACH 10' OF DISTANCE FROM THE
- 8. SHALL 1" FOR EACH 10' OF DISTANCE FROM THE
- 9. SHALL 1" FOR EACH 10' OF DISTANCE FROM THE
- 10. SHALL 1" FOR EACH 10' OF DISTANCE FROM THE
- 11. SHALL 1" FOR EACH 10' OF DISTANCE FROM THE
- 12. SHALL 1" FOR EACH 10' OF DISTANCE FROM THE
- 13. SHALL 1" FOR EACH 10' OF DISTANCE FROM THE
- 14. SHALL 1" FOR EACH 10' OF DISTANCE FROM THE
- 15. SHALL 1" FOR EACH 10' OF DISTANCE FROM THE
- 16. SHALL 1" FOR EACH 10' OF DISTANCE FROM THE
- 17. SHALL 1" FOR EACH 10' OF DISTANCE FROM THE
- 18. SHALL 1" FOR EACH 10' OF DISTANCE FROM THE
- 19. SHALL 1" FOR EACH 10' OF DISTANCE FROM THE
- 20. SHALL 1" FOR EACH 10' OF DISTANCE FROM THE

PARKING LOT

- 1. SHALL 1" FOR EACH 10' OF DISTANCE FROM THE
- 2. SHALL 1" FOR EACH 10' OF DISTANCE FROM THE
- 3. SHALL 1" FOR EACH 10' OF DISTANCE FROM THE
- 4. SHALL 1" FOR EACH 10' OF DISTANCE FROM THE
- 5. SHALL 1" FOR EACH 10' OF DISTANCE FROM THE
- 6. SHALL 1" FOR EACH 10' OF DISTANCE FROM THE
- 7. SHALL 1" FOR EACH 10' OF DISTANCE FROM THE
- 8. SHALL 1" FOR EACH 10' OF DISTANCE FROM THE
- 9. SHALL 1" FOR EACH 10' OF DISTANCE FROM THE
- 10. SHALL 1" FOR EACH 10' OF DISTANCE FROM THE
- 11. SHALL 1" FOR EACH 10' OF DISTANCE FROM THE
- 12. SHALL 1" FOR EACH 10' OF DISTANCE FROM THE
- 13. SHALL 1" FOR EACH 10' OF DISTANCE FROM THE
- 14. SHALL 1" FOR EACH 10' OF DISTANCE FROM THE
- 15. SHALL 1" FOR EACH 10' OF DISTANCE FROM THE
- 16. SHALL 1" FOR EACH 10' OF DISTANCE FROM THE
- 17. SHALL 1" FOR EACH 10' OF DISTANCE FROM THE
- 18. SHALL 1" FOR EACH 10' OF DISTANCE FROM THE
- 19. SHALL 1" FOR EACH 10' OF DISTANCE FROM THE
- 20. SHALL 1" FOR EACH 10' OF DISTANCE FROM THE

EXISTING OFFICE BUILDINGS
AS SHOWN ON THE 1988 PLAN
BY [Signature]



NOTE TO CONTRACTOR

- 1. THE CONTRACTOR SHALL BE RESPONSIBLE FOR OBTAINING ALL NECESSARY PERMITS AND APPROVALS FROM THE LOCAL AGENCIES.
- 2. THE CONTRACTOR SHALL BE RESPONSIBLE FOR OBTAINING ALL NECESSARY PERMITS AND APPROVALS FROM THE LOCAL AGENCIES.
- 3. THE CONTRACTOR SHALL BE RESPONSIBLE FOR OBTAINING ALL NECESSARY PERMITS AND APPROVALS FROM THE LOCAL AGENCIES.

SEAL
[Signature]
[Title]

DESIGNED BY
[Signature]
[Title]

DATE	10/10/88
SCALE	AS SHOWN
PROJECT	LA QUIRTA AVENUE, WEST
CLIENT	LA QUIRTA AVENUE, WEST
ARCHITECT	LA QUIRTA AVENUE, WEST

GRADING AND DRAINAGE PLAN
LA QUIRTA AVENUE, WEST
CARLSBAD VALLEY GOLF

C-301
2