

BASIS OF BEARINGS

N 83°40'36" W - THE SOUTH LINE OF THE SE 1/4 OF THE SW 1/4 OF SECTION 35, T19S, R60E, M.D.M., AS SHOWN ON PARCEL MAP FILE 81, PAGE 95 OF CLARK COUNTY, NEVADA, RECORDS.

BENCHMARK

CLV BM # 11V002NNE6 - RIVET & PLATE IN TOP OF CURB, SOUTHWEST RETURN OF LONE MOUNTAIN AND BANNISTER LANE.

ELEVATION = 2282.09

CURB CURVE TABLE				
CURVE	DELTA	LENGTH	RADIUS	TANGENT
C1	96°14'01"	50.39'	30.00'	33.46'
C2	83°45'27"	43.86'	30.00'	26.90'

UTILITY NOTE

UTILITY LOCATIONS SHOWN HEREON ARE APPROXIMATE ONLY. IT SHALL BE THE CONTRACTORS RESPONSIBILITY TO DETERMINE THE EXACT VERTICAL AND HORIZONTAL LOCATION OF ALL EXISTING UNDERGROUND UTILITIES PRIOR TO COMMENCING CONSTRUCTION. NO REPRESENTATION IS MADE THAT ALL EXISTING UTILITIES ARE SHOWN HEREON. THE ENGINEER ASSUMES NO RESPONSIBILITY FOR UTILITIES NOT SHOWN OR UTILITIES NOT SHOWN IN THEIR PROPER LOCATION.

LEGEND

- EDGE OF EXISTING PAVEMENT
- SAWCUT LINE
- AREA OF CONCRETE CONSTRUCTION
- AREA OF AC PAVEMENT CONSTRUCTION
- AREA OF AC SIDEWALK CONSTRUCTION
- NEW RIGHT-OF-WAY
- OLD RIGHT-OF-WAY

Avoid cutting underground utility lines. It's costly.

Call before you Dig.

1-800-227-2600

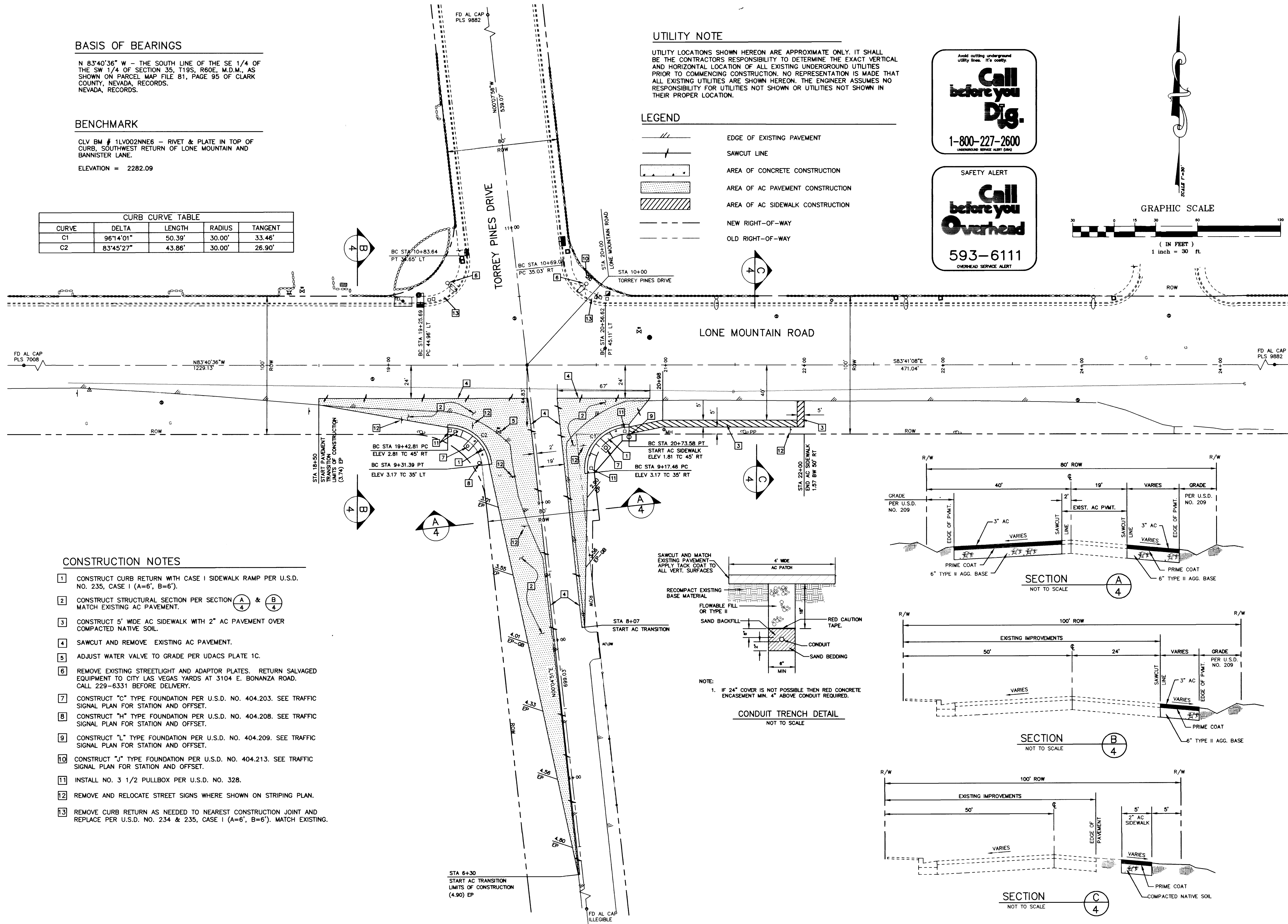
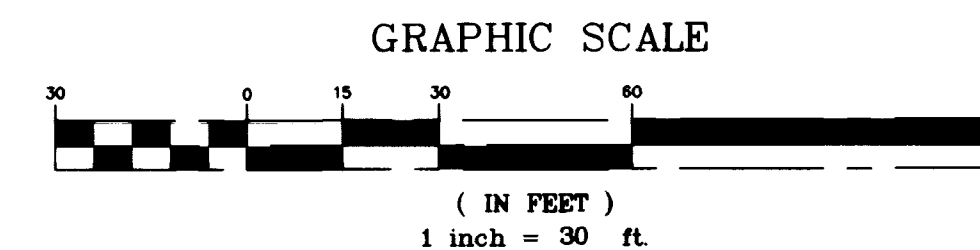
UNDERGROUND SERVICE ALERT (USA)

SAFETY ALERT

Call before you Overhead

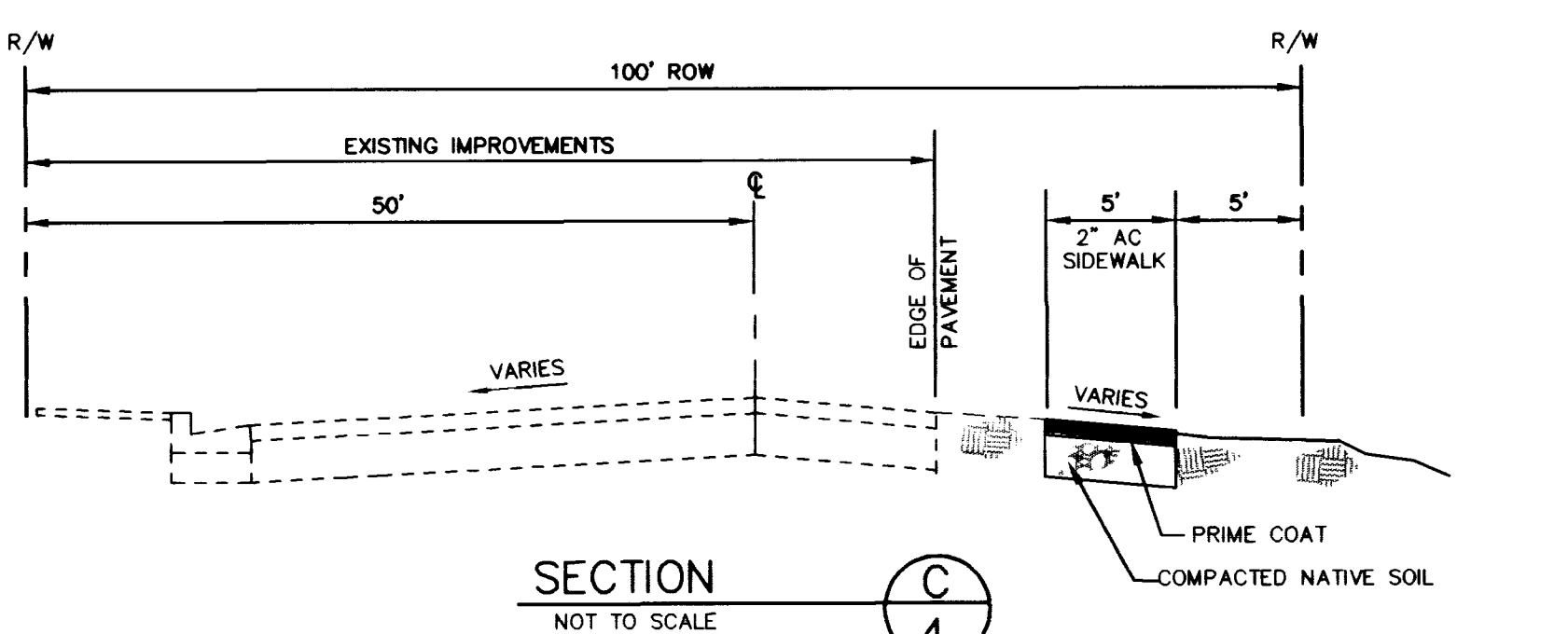
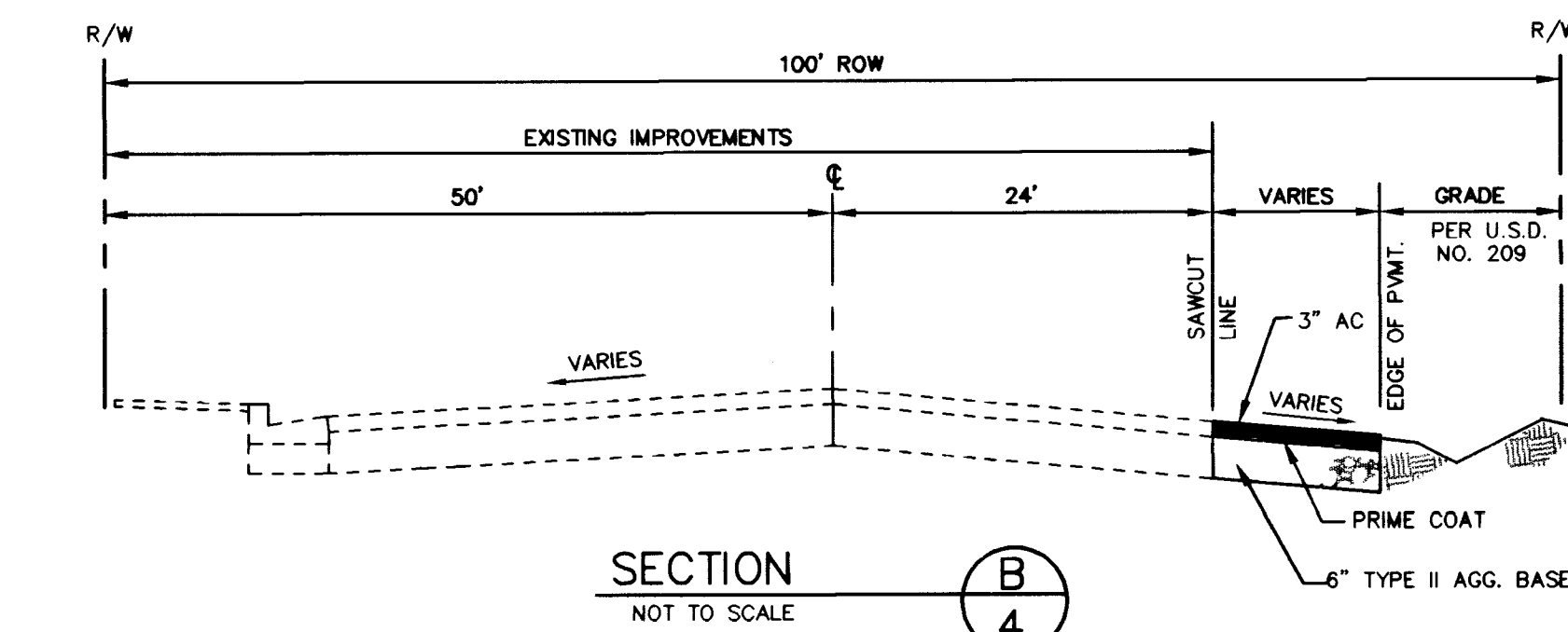
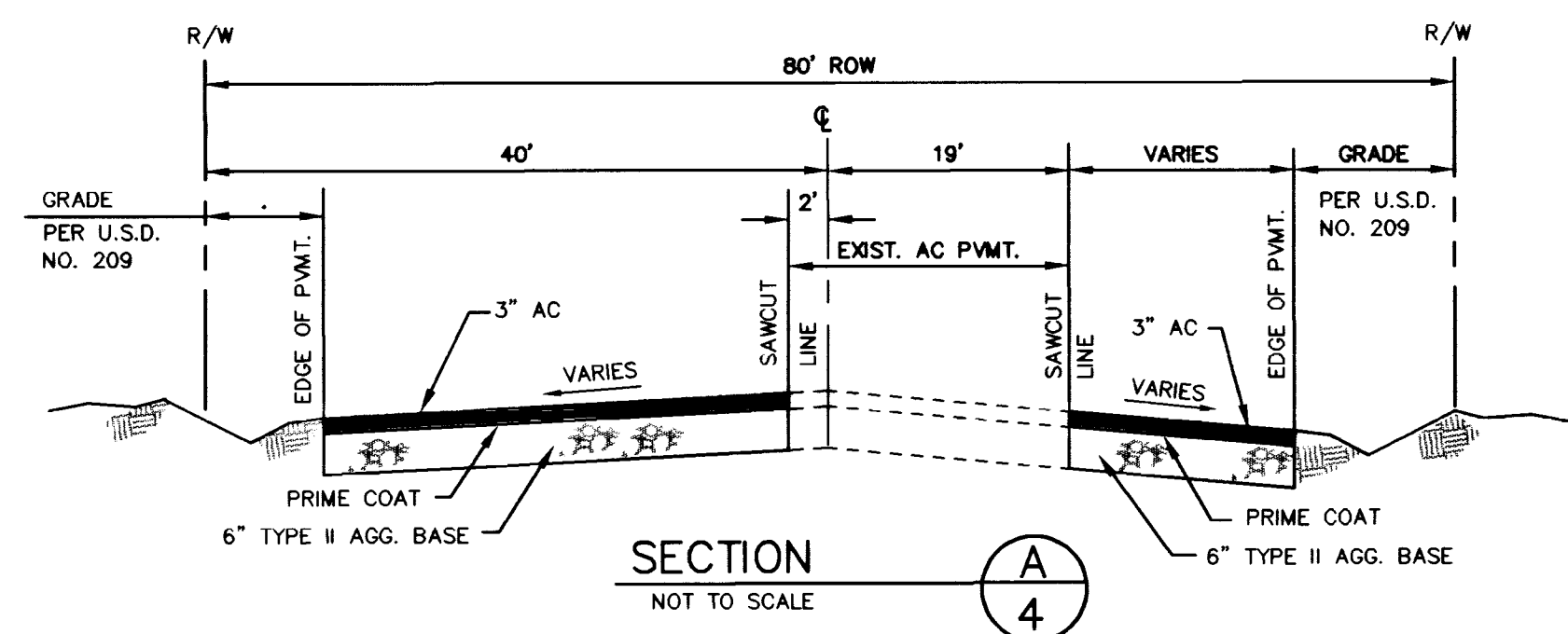
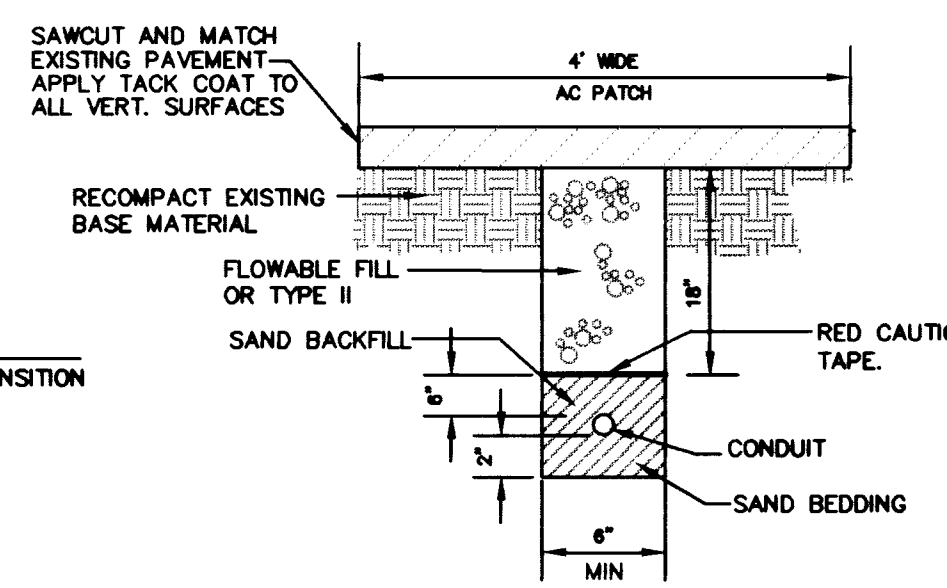
593-6111

OVERHEAD SERVICE ALERT



CONSTRUCTION NOTES

- 1 CONSTRUCT CURB RETURN WITH CASE I SIDEWALK RAMP PER U.S.D. NO. 235, CASE I (A=6', B=6').
- 2 CONSTRUCT STRUCTURAL SECTION PER SECTION A & B MATCH EXISTING AC PAVEMENT.
- 3 CONSTRUCT 5' WIDE AC SIDEWALK WITH 2" AC PAVEMENT OVER COMPACTED NATIVE SOIL.
- 4 SAWCUT AND REMOVE EXISTING AC PAVEMENT.
- 5 ADJUST WATER VALVE TO GRADE PER UDACS PLATE 1C.
- 6 REMOVE EXISTING STREETLIGHT AND ADAPTOR PLATES. RETURN SALVAGED EQUIPMENT TO CITY LAS VEGAS YARDS AT 3104 E. BONANZA ROAD. CALL 229-6331 BEFORE DELIVERY.
- 7 CONSTRUCT "C" TYPE FOUNDATION PER U.S.D. NO. 404.203. SEE TRAFFIC SIGNAL PLAN FOR STATION AND OFFSET.
- 8 CONSTRUCT "H" TYPE FOUNDATION PER U.S.D. NO. 404.208. SEE TRAFFIC SIGNAL PLAN FOR STATION AND OFFSET.
- 9 CONSTRUCT "L" TYPE FOUNDATION PER U.S.D. NO. 404.209. SEE TRAFFIC SIGNAL PLAN FOR STATION AND OFFSET.
- 10 CONSTRUCT "J" TYPE FOUNDATION PER U.S.D. NO. 404.213. SEE TRAFFIC SIGNAL PLAN FOR STATION AND OFFSET.
- 11 INSTALL NO. 3 1/2 PULLBOX PER U.S.D. NO. 328.
- 12 REMOVE AND RELOCATE STREET SIGNS WHERE SHOWN ON STRIPING PLAN.
- 13 REMOVE CURB RETURN AS NEEDED TO NEAREST CONSTRUCTION JOINT AND REPLACE PER U.S.D. NO. 234 & 235, CASE I (A=6', B=6'). MATCH EXISTING.



DATE: _____

REVISIONS: _____

W.A. # _____ DESIGN BY: TMH

SCALE (V): _____ DATE: JULY 1998

SCALE (H): 1"=30' FLD. BK. # _____

ENGINEERING DESIGN SECTION

CITY ENGINEER: DENNIS ANDERSON, P.E.
PROJECT MANAGER: THERESA HANRAHAN, P.E.

DEPARTMENT OF PUBLIC WORKS

PROJECT: LONE MOUNTAIN ROAD TORREY PINES DRIVE TRAFFIC SIGNAL PLANS

SHEET: _____

IMPROVEMENT PLAN

CIVIL ENGINEER - STATE OF NEVADA
THERESA HANRAHAN
No. 5968

DRAWING NO. 107-V2761 4/6

K:\city_engineer\DEPT\Traffic\LoneMountainTorreyPines\WDK.dwg Fri Nov 13 09:53:56 1998

