

LEGEND

- | | |
|----------|----------------------------------|
| EXISTING | POWER POLE |
| | GUY ANCHOR |
| | STREET LIGHT |
| | LIGHT POST |
| | PULL BOX |
| | FIRE HYDRANT |
| | WATER VALVE |
| | SANITARY SEWER MANHOLE |
| | WATER MANHOLE |
| | ELECTRIC MANHOLE |
| | SIGN |
| | MONUMENT |
| | SIDEWALK RAMP |
| | TRANSFORMER |
| | PADMOUNT SERVICE POINT |
| | CONTROLLER CABINET |
| | BLOCK WALL |
| | DROP INLET MANHOLE AND STRUCTURE |
| | CURB & GUTTER |
| | EDGE OF PAVEMENT |
| | LANE STRIPING |
| | BACK OF WALK |
| | RIGHT-OF-WAY |
| | TELEPHONE VAULT |

UTILITY NOTE

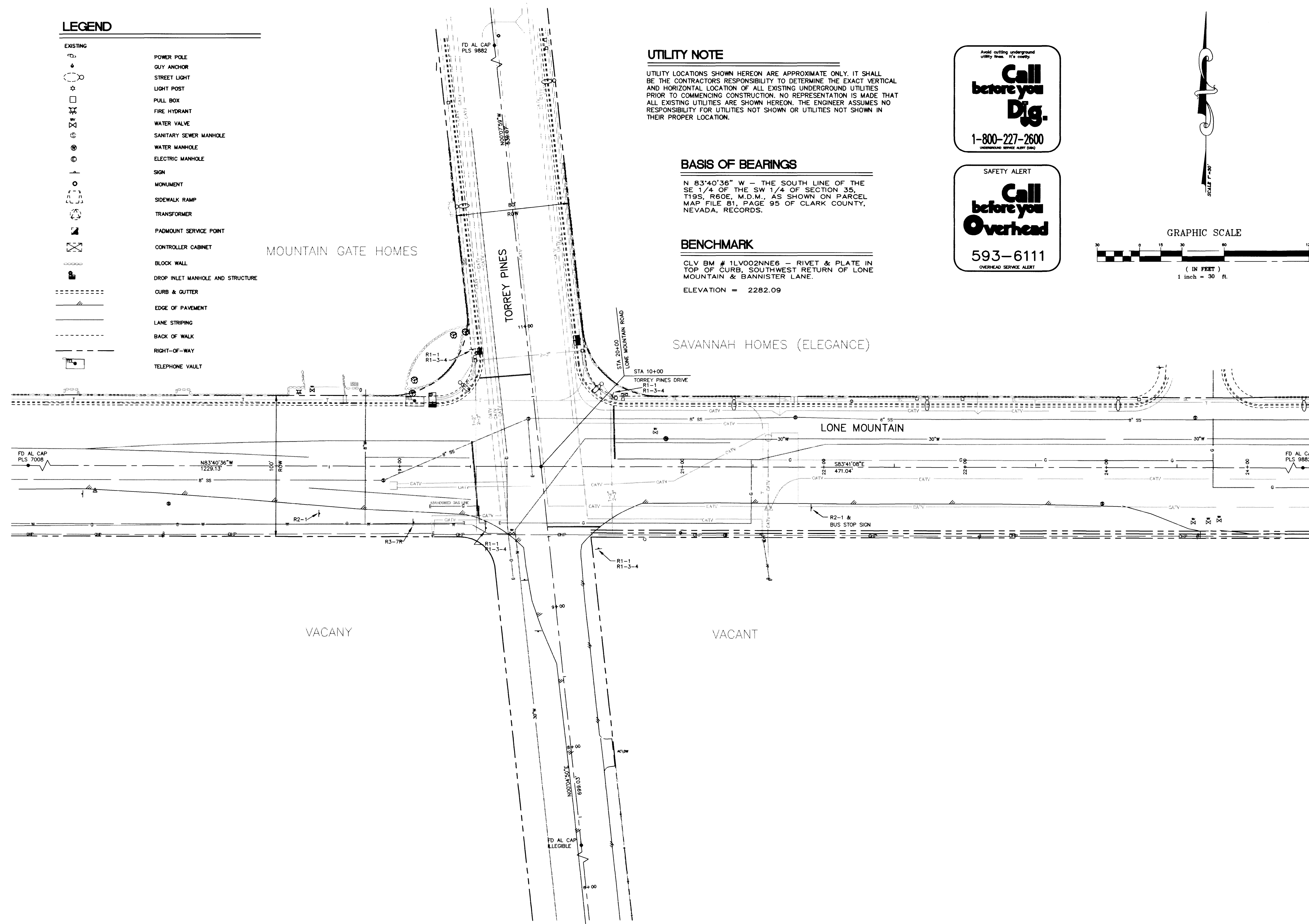
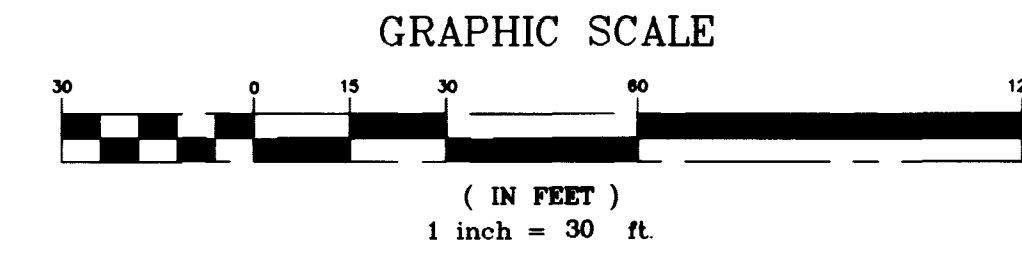
UTILITY LOCATIONS SHOWN HEREON ARE APPROXIMATE ONLY. IT SHALL BE THE CONTRACTOR'S RESPONSIBILITY TO DETERMINE THE EXACT VERTICAL AND HORIZONTAL LOCATION OF ALL EXISTING UNDERGROUND UTILITIES PRIOR TO COMMENCING CONSTRUCTION. NO REPRESENTATION IS MADE THAT ALL EXISTING UTILITIES ARE SHOWN HEREON. THE ENGINEER ASSUMES NO RESPONSIBILITY FOR UTILITIES NOT SHOWN OR UTILITIES NOT SHOWN IN THEIR PROPER LOCATION.

BASIS OF BEARINGS

N 83°40'36" W - THE SOUTH LINE OF THE SE 1/4 OF THE SW 1/4 OF SECTION 35, T19S, R60E, M.D.M., AS SHOWN ON PARCEL MAP FILE 81, PAGE 95 OF CLARK COUNTY, NEVADA, RECORDS.

BENCHMARK

CLV BM # 1LV002NNE6 - RIVET & PLATE IN TOP OF CURB, SOUTHWEST RETURN OF LONE MOUNTAIN & BANNISTER LANE.
ELEVATION = 2282.09



DATE	
REVISIONS	
W.A. #	
DESIGN BY	TMH
DATE	JULY 15/98
SCALE (V)	
SCALE (H)	1"=30'
F.D. BK. #	
ENGINEERING DESIGN SECTION	
CITY ENGINEER: DENNIS ANDERSON, P.E.	
PROJECT MANAGER: THERESA HANRAHAN, P.E.	
DEPARTMENT OF PUBLIC WORKS	
PROJECT: LONE MOUNTAIN ROAD TORREY PINES DRIVE TRAFFIC SIGNAL PLANS	
SHEET: EXISTING IMPROVEMENTS	
DRAWING NO.	107-V2761
	3/6

K:\city_engineer\DEPT\Traffic\LoneMountainTorreyPines.dwg EXISTING.dwg Thu Nov 12 16:36:27 1998

