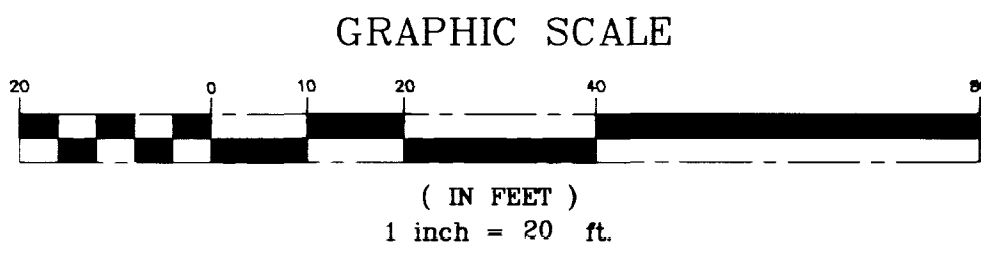


SAFETY ALERT
Call before you Overhead
 593-6111
 OVERHEAD SERVICE ALERT

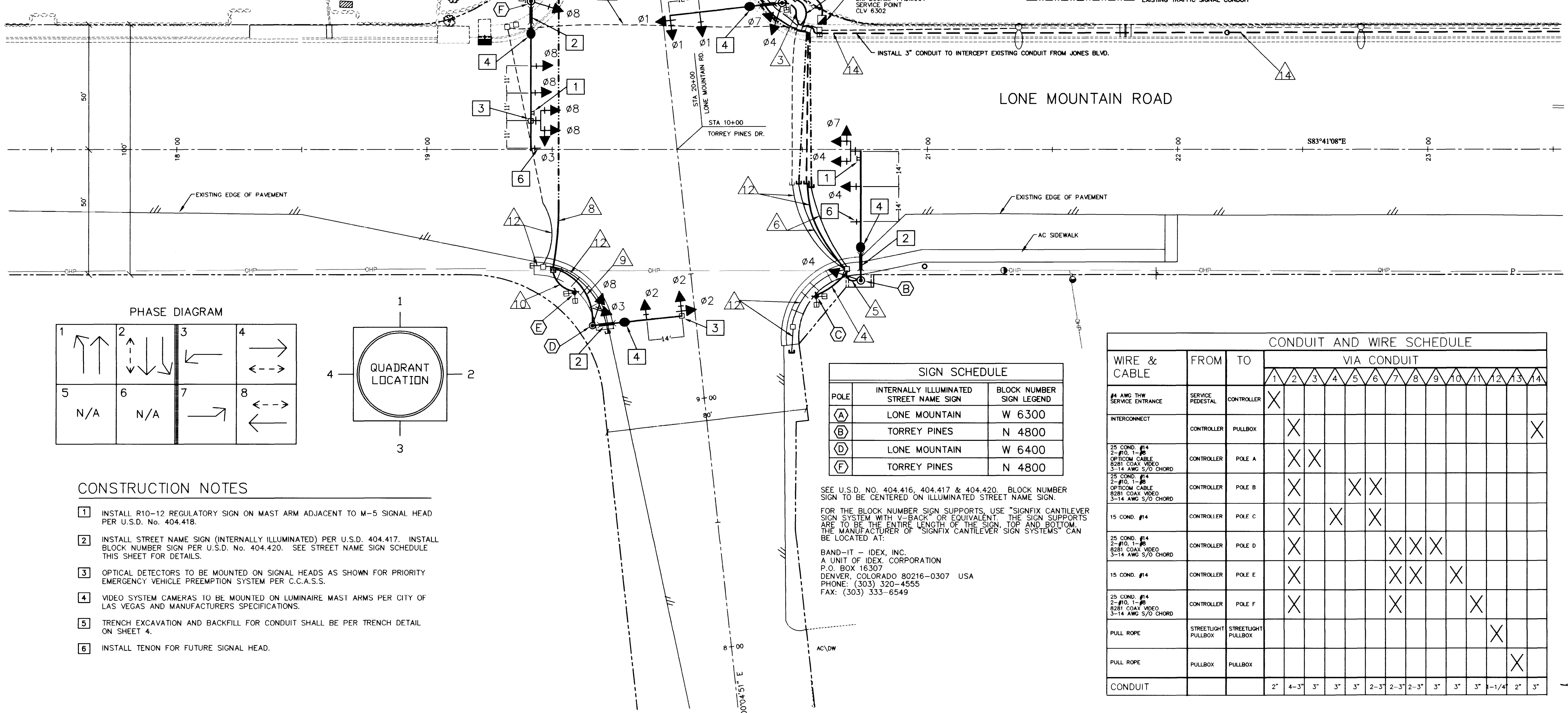
Call before you Dig.
 1-800-227-2600
 UNDERGROUND SERVICE ALERT (USA)



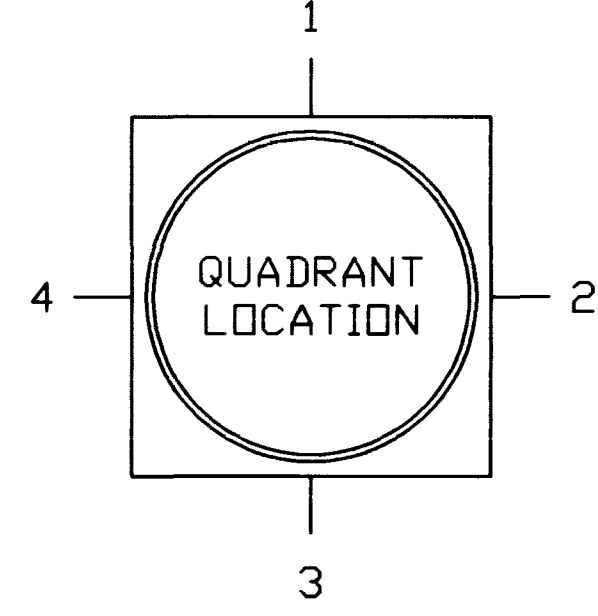
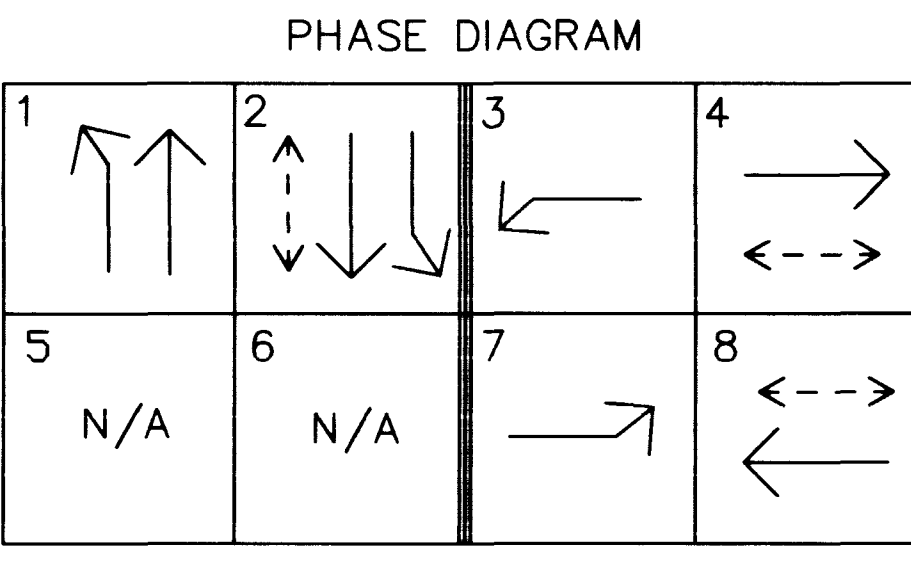
POLE AND FOUNDATION SCHEDULE														
NO.	STATION	TYPE	SIGNAL ARM		LUM. ARM		SIGNALS (VEH)		SIGNALS (PED)		PUSHBUTTON		FOUNDATION TYPE	REMARKS
			QUAD.	LENGTH	QUAD.	LENGTH	QUAD.	TYPE	QUAD.	TYPE	QUAD.	ARROW		
A	EXISTING 10+53.58 TORREY 49.15' RT	XX 30'	4	45'	4	15'	MA M-2 MA M-2 B-14T	2	W-3T	4	RIGHT	EXIST. "L"	1 2 4	
B	20+73.57 LONE MTN. 51.50' RT	XX-A 30'	1	50'	1	15'	MA M-2 MA M-5 B-1T					"L" PER U.S.D. 404.209	1 2 4 6	
C	20+55.89 LONE MTN. 59.14' RT	1-B						TOP	W-2T	1	RIGHT	"C" PER U.S.D. 404.203		
D	9+35.65 TORREY 41.84' LT	XX 30'	2	35'	2	15'	MA M-2 MA M-2 B-14T					"H" PER U.S.D. 404.208	1 2 3 4	
E	9+47.52 TORREY 47.32' LT	1-B						TOP	W-2T	2	RIGHT	"C" PER U.S.D. 404.203		
F	EXISTING 19+42.52 LONE MTN. 59.47' LT	XX-A 30'	3	60'	3	15'	MA M-2 MA M-2 MA M-5 B-1T	1	W-3T	2	LEFT	EXIST. "L"	1 2 3 4 6	
G	20+45.40 LONE MTN. BEHIND POLE											"J" PER U.S.D. 404.213		

POLE SCHEDULE NOTES:

- CONTRACTOR TO VERIFY LOADING FACTORS WITH POLE/MAST ARM MANUFACTURER.
- THE LOCATION OF ALL TRAFFIC SIGNAL POLES WILL BE APPROVED BY THE CITY OF LAS VEGAS TRAFFIC ELECTRICAL FIELD OPERATIONS (229-6331) PRIOR TO ANY POLE EXCAVATION AND AFTER THE CONTRACTOR HAS DETERMINED THE LOCATION OF UNDERGROUND AND OVERHEAD UTILITIES NEAR TRAFFIC SIGNAL POLE STATIONS AND OFFSETS.
- ALL SIGNAL HEAD TENON PLACEMENTS TO BE DETERMINED AFTER POLE PLACEMENT IS DETERMINED. TENON PLACEMENT TO BE APPROVED BY THE CITY OF LAS VEGAS TRAFFIC/ELECTRICAL FIELD OPERATIONS (TELE. 229-6331).



--- EXISTING STREETLIGHT CONDUIT
 --- EXISTING STREETLIGHT CONDUIT
 --- EXISTING TRAFFIC SIGNAL CONDUIT



SIGN SCHEDULE		
POLE	INTERNALLY ILLUMINATED STREET NAME SIGN	BLOCK NUMBER SIGN LEGEND
A	LONE MOUNTAIN	W 6300
B	TORREY PINES	N 4800
D	LONE MOUNTAIN	W 6400
F	TORREY PINES	N 4800

SEE U.S.D. NO. 404.416, 404.417 & 404.420. BLOCK NUMBER SIGN TO BE CENTERED ON ILLUMINATED STREET SIGN.
 FOR THE BLOCK NUMBER SIGN SUPPORTS, USE "SIGNFIX CANTILEVER SIGN SYSTEM WITH V-BACK" OR EQUIVALENT. THE SIGN SUPPORTS ARE TO BE THE ENTIRE LENGTH OF THE SIGN, TOP AND BOTTOM. THE MANUFACTURER OF "SIGNFIX CANTILEVER SIGN SYSTEMS" CAN BE LOCATED AT:
 BAND-IT - IDEX, INC.
 A UNIT OF IDEX CORPORATION
 P.O. BOX 16307
 DENVER, COLORADO 80216-0307 USA
 PHONE: (303) 320-4555
 FAX: (303) 333-6549

WIRE & CABLE	FROM	TO	CONDUIT AND WIRE SCHEDULE																
			1	2	3	4	5	6	7	8	9	10	11	12	13	14			
#4 AWG THW SERVICE ENTRANCE	SERVICE PEDESTAL	CONTROLLER	X																
INTERCONNECT	CONTROLLER	PULLBOX		X															X
25 COND. #14 2-#10, 1-#8 OPTICOM CABLE 8281 COAX VIDEO 3-14 AWG S/O CHORD	CONTROLLER	POLE A	X	X															
25 COND. #14 2-#10, 1-#8 OPTICOM CABLE 8281 COAX VIDEO 3-14 AWG S/O CHORD	CONTROLLER	POLE B	X			X	X												
15 COND. #14	CONTROLLER	POLE C	X		X	X													
25 COND. #14 2-#10, 1-#8 OPTICOM CABLE 8281 COAX VIDEO 3-14 AWG S/O CHORD	CONTROLLER	POLE D	X				X	X	X										
15 COND. #14	CONTROLLER	POLE E	X				X	X		X									
25 COND. #14 2-#10, 1-#8 OPTICOM CABLE 8281 COAX VIDEO 3-14 AWG S/O CHORD	CONTROLLER	POLE F	X				X				X								
PULL ROPE	STREETLIGHT PULLBOX	STREETLIGHT PULLBOX																X	
PULL ROPE	PULLBOX	PULLBOX																	X
CONDUIT			2"	4-3"	3"	3"	3"	2-3"	2-3"	2-3"	3"	3"	3"	3"	3"	3"	1-1/4"	2"	3"

CONSTRUCTION NOTES

- INSTALL R10-12 REGULATORY SIGN ON MAST ARM ADJACENT TO M-5 SIGNAL HEAD PER U.S.D. No. 404.418.
- INSTALL STREET NAME SIGN (INTERNALLY ILLUMINATED) PER U.S.D. 404.417. INSTALL BLOCK NUMBER SIGN PER U.S.D. No. 404.420. SEE STREET NAME SIGN SCHEDULE THIS SHEET FOR DETAILS.
- OPTICAL DETECTORS TO BE MOUNTED ON SIGNAL HEADS AS SHOWN FOR PRIORITY EMERGENCY VEHICLE PREEMPTION SYSTEM PER C.C.A.S.S.
- VIDEO SYSTEM CAMERAS TO BE MOUNTED ON LUMINAIRE MAST ARMS PER CITY OF LAS VEGAS AND MANUFACTURERS SPECIFICATIONS.
- TRENCH EXCAVATION AND BACKFILL FOR CONDUIT SHALL BE PER TRENCH DETAIL ON SHEET 4.
- INSTALL TENON FOR FUTURE SIGNAL HEAD.

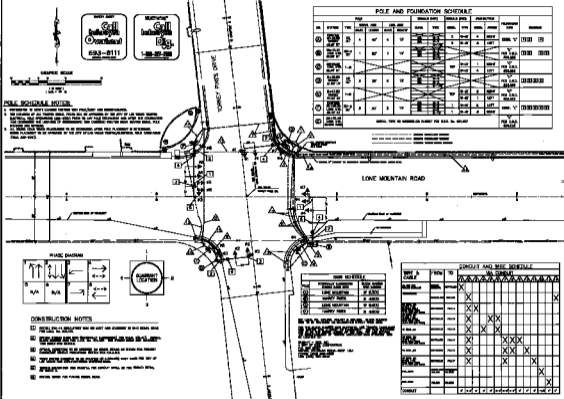
DATE: _____
 REVISIONS: _____
 W.A. # _____
 SCALE (V) _____
 SCALE (H) 1"=20'
 DATE: JULY 1998
 DESIGN BY: TMH
 PROJECT: ENGINEERING DESIGN SECTION
 CITY ENGINEER: DENNIS ANDERSON, P.E.
 PROJECT MANAGER: THERESA M. HANRAHAN, P.E.
 DEPARTMENT OF PUBLIC WORKS
 PROJECT: LONE MOUNTAIN ROAD & TORREY PINES DRIVE TRAFFIC SIGNAL PLAN
 SHEET: TRAFFIC SIGNAL PLAN
 DRAWING NO. 107-V2761
 5/6

AS BUILT



POLE SCHEDULE NOTES

1. REFER TO SHEET COVERED THEREIN FOR PLANVIEW AND DIMENSIONS.
2. THE LOCATION OF ALL TRAFFIC SIGNAL POLES SHALL BE APPROVED BY THE CITY OF LOS ANGELES TRAFFIC SIGNAL ENGINEER. THIS APPROVAL SHALL BE OBTAINED PRIOR TO ANY POLE CONSTRUCTION AND UNDER THE CONDITIONS AND LIMITS OF APPROVAL. THE TRAFFIC SIGNAL ENGINEER SHALL BE ADVISED OF ANY CHANGES AND THE LOCATION OF ALL TRAFFIC SIGNAL POLES SHALL BE APPROVED AND RECORDED BY THE CITY OF LOS ANGELES TRAFFIC SIGNAL ENGINEER.
3. ALL SIGNAL POLE TRAILER PLACEMENTS TO BE DETERMINED AFTER POLE PLACEMENT IS BEGINNING. POLES PLACED TO BE APPROVED BY THE CITY OF LOS ANGELES TRAFFIC SIGNAL ENGINEER. (SEE SHEET TRS-100-1007)



POLE AND FOUNDATION SCHEDULE

NO.	TYPE	TRAFFIC SIGNAL	TRAFFIC SIGNAL	TRAFFIC SIGNAL	TRAFFIC SIGNAL	SIGNAL POLE		FOUNDATION		REMARKS
						NO.	TYPE	NO.	TYPE	
1	TRAFFIC SIGNAL	TRAFFIC SIGNAL	TRAFFIC SIGNAL	TRAFFIC SIGNAL	TRAFFIC SIGNAL	TRAFFIC SIGNAL	TRAFFIC SIGNAL	TRAFFIC SIGNAL	TRAFFIC SIGNAL	TRAFFIC SIGNAL
2	TRAFFIC SIGNAL	TRAFFIC SIGNAL	TRAFFIC SIGNAL	TRAFFIC SIGNAL	TRAFFIC SIGNAL	TRAFFIC SIGNAL	TRAFFIC SIGNAL	TRAFFIC SIGNAL	TRAFFIC SIGNAL	TRAFFIC SIGNAL
3	TRAFFIC SIGNAL	TRAFFIC SIGNAL	TRAFFIC SIGNAL	TRAFFIC SIGNAL	TRAFFIC SIGNAL	TRAFFIC SIGNAL	TRAFFIC SIGNAL	TRAFFIC SIGNAL	TRAFFIC SIGNAL	TRAFFIC SIGNAL
4	TRAFFIC SIGNAL	TRAFFIC SIGNAL	TRAFFIC SIGNAL	TRAFFIC SIGNAL	TRAFFIC SIGNAL	TRAFFIC SIGNAL	TRAFFIC SIGNAL	TRAFFIC SIGNAL	TRAFFIC SIGNAL	TRAFFIC SIGNAL
5	TRAFFIC SIGNAL	TRAFFIC SIGNAL	TRAFFIC SIGNAL	TRAFFIC SIGNAL	TRAFFIC SIGNAL	TRAFFIC SIGNAL	TRAFFIC SIGNAL	TRAFFIC SIGNAL	TRAFFIC SIGNAL	TRAFFIC SIGNAL
6	TRAFFIC SIGNAL	TRAFFIC SIGNAL	TRAFFIC SIGNAL	TRAFFIC SIGNAL	TRAFFIC SIGNAL	TRAFFIC SIGNAL	TRAFFIC SIGNAL	TRAFFIC SIGNAL	TRAFFIC SIGNAL	TRAFFIC SIGNAL
7	TRAFFIC SIGNAL	TRAFFIC SIGNAL	TRAFFIC SIGNAL	TRAFFIC SIGNAL	TRAFFIC SIGNAL	TRAFFIC SIGNAL	TRAFFIC SIGNAL	TRAFFIC SIGNAL	TRAFFIC SIGNAL	TRAFFIC SIGNAL
8	TRAFFIC SIGNAL	TRAFFIC SIGNAL	TRAFFIC SIGNAL	TRAFFIC SIGNAL	TRAFFIC SIGNAL	TRAFFIC SIGNAL	TRAFFIC SIGNAL	TRAFFIC SIGNAL	TRAFFIC SIGNAL	TRAFFIC SIGNAL
9	TRAFFIC SIGNAL	TRAFFIC SIGNAL	TRAFFIC SIGNAL	TRAFFIC SIGNAL	TRAFFIC SIGNAL	TRAFFIC SIGNAL	TRAFFIC SIGNAL	TRAFFIC SIGNAL	TRAFFIC SIGNAL	TRAFFIC SIGNAL
10	TRAFFIC SIGNAL	TRAFFIC SIGNAL	TRAFFIC SIGNAL	TRAFFIC SIGNAL	TRAFFIC SIGNAL	TRAFFIC SIGNAL	TRAFFIC SIGNAL	TRAFFIC SIGNAL	TRAFFIC SIGNAL	TRAFFIC SIGNAL



CONSTRUCTION NOTES

1. INSTALL POLE-TO-BASEMENT SHALL BE AS NOTED AND APPROVED BY THE SIGNAL ENGINEER.
2. THE SIGNAL ENGINEER SHALL BE ADVISED OF ANY CHANGES AND THE LOCATION OF ALL TRAFFIC SIGNAL POLES SHALL BE APPROVED AND RECORDED BY THE CITY OF LOS ANGELES TRAFFIC SIGNAL ENGINEER.
3. ALL SIGNAL POLE TRAILER PLACEMENTS TO BE DETERMINED AFTER POLE PLACEMENT IS BEGINNING. POLES PLACED TO BE APPROVED BY THE CITY OF LOS ANGELES TRAFFIC SIGNAL ENGINEER. (SEE SHEET TRS-100-1007)
4. THE SIGNAL ENGINEER SHALL BE ADVISED OF ANY CHANGES AND THE LOCATION OF ALL TRAFFIC SIGNAL POLES SHALL BE APPROVED AND RECORDED BY THE CITY OF LOS ANGELES TRAFFIC SIGNAL ENGINEER.
5. THE SIGNAL ENGINEER SHALL BE ADVISED OF ANY CHANGES AND THE LOCATION OF ALL TRAFFIC SIGNAL POLES SHALL BE APPROVED AND RECORDED BY THE CITY OF LOS ANGELES TRAFFIC SIGNAL ENGINEER.
6. THE SIGNAL ENGINEER SHALL BE ADVISED OF ANY CHANGES AND THE LOCATION OF ALL TRAFFIC SIGNAL POLES SHALL BE APPROVED AND RECORDED BY THE CITY OF LOS ANGELES TRAFFIC SIGNAL ENGINEER.

POLE SCHEDULE

NO.	TRAFFIC SIGNAL	TRAFFIC SIGNAL	TRAFFIC SIGNAL	TRAFFIC SIGNAL
1	TRAFFIC SIGNAL	TRAFFIC SIGNAL	TRAFFIC SIGNAL	TRAFFIC SIGNAL
2	TRAFFIC SIGNAL	TRAFFIC SIGNAL	TRAFFIC SIGNAL	TRAFFIC SIGNAL
3	TRAFFIC SIGNAL	TRAFFIC SIGNAL	TRAFFIC SIGNAL	TRAFFIC SIGNAL
4	TRAFFIC SIGNAL	TRAFFIC SIGNAL	TRAFFIC SIGNAL	TRAFFIC SIGNAL
5	TRAFFIC SIGNAL	TRAFFIC SIGNAL	TRAFFIC SIGNAL	TRAFFIC SIGNAL
6	TRAFFIC SIGNAL	TRAFFIC SIGNAL	TRAFFIC SIGNAL	TRAFFIC SIGNAL
7	TRAFFIC SIGNAL	TRAFFIC SIGNAL	TRAFFIC SIGNAL	TRAFFIC SIGNAL
8	TRAFFIC SIGNAL	TRAFFIC SIGNAL	TRAFFIC SIGNAL	TRAFFIC SIGNAL
9	TRAFFIC SIGNAL	TRAFFIC SIGNAL	TRAFFIC SIGNAL	TRAFFIC SIGNAL
10	TRAFFIC SIGNAL	TRAFFIC SIGNAL	TRAFFIC SIGNAL	TRAFFIC SIGNAL

CONDUIT AND MISC SCHEDULE

NO.	TYPE	NO.	TYPE	NO.	TYPE	NO.	TYPE	NO.	TYPE
1	CONDUIT	1	CONDUIT	1	CONDUIT	1	CONDUIT	1	CONDUIT
2	CONDUIT	2	CONDUIT	2	CONDUIT	2	CONDUIT	2	CONDUIT
3	CONDUIT	3	CONDUIT	3	CONDUIT	3	CONDUIT	3	CONDUIT
4	CONDUIT	4	CONDUIT	4	CONDUIT	4	CONDUIT	4	CONDUIT
5	CONDUIT	5	CONDUIT	5	CONDUIT	5	CONDUIT	5	CONDUIT
6	CONDUIT	6	CONDUIT	6	CONDUIT	6	CONDUIT	6	CONDUIT
7	CONDUIT	7	CONDUIT	7	CONDUIT	7	CONDUIT	7	CONDUIT
8	CONDUIT	8	CONDUIT	8	CONDUIT	8	CONDUIT	8	CONDUIT
9	CONDUIT	9	CONDUIT	9	CONDUIT	9	CONDUIT	9	CONDUIT
10	CONDUIT	10	CONDUIT	10	CONDUIT	10	CONDUIT	10	CONDUIT

DEPARTMENT OF PUBLIC WORKS
 TRAFFIC SIGNAL PLAN
 LONE MOUNTAIN ROAD
 & TORREY PINES DRIVE
 TRAFFIC SIGNAL PLAN

AS BUILT