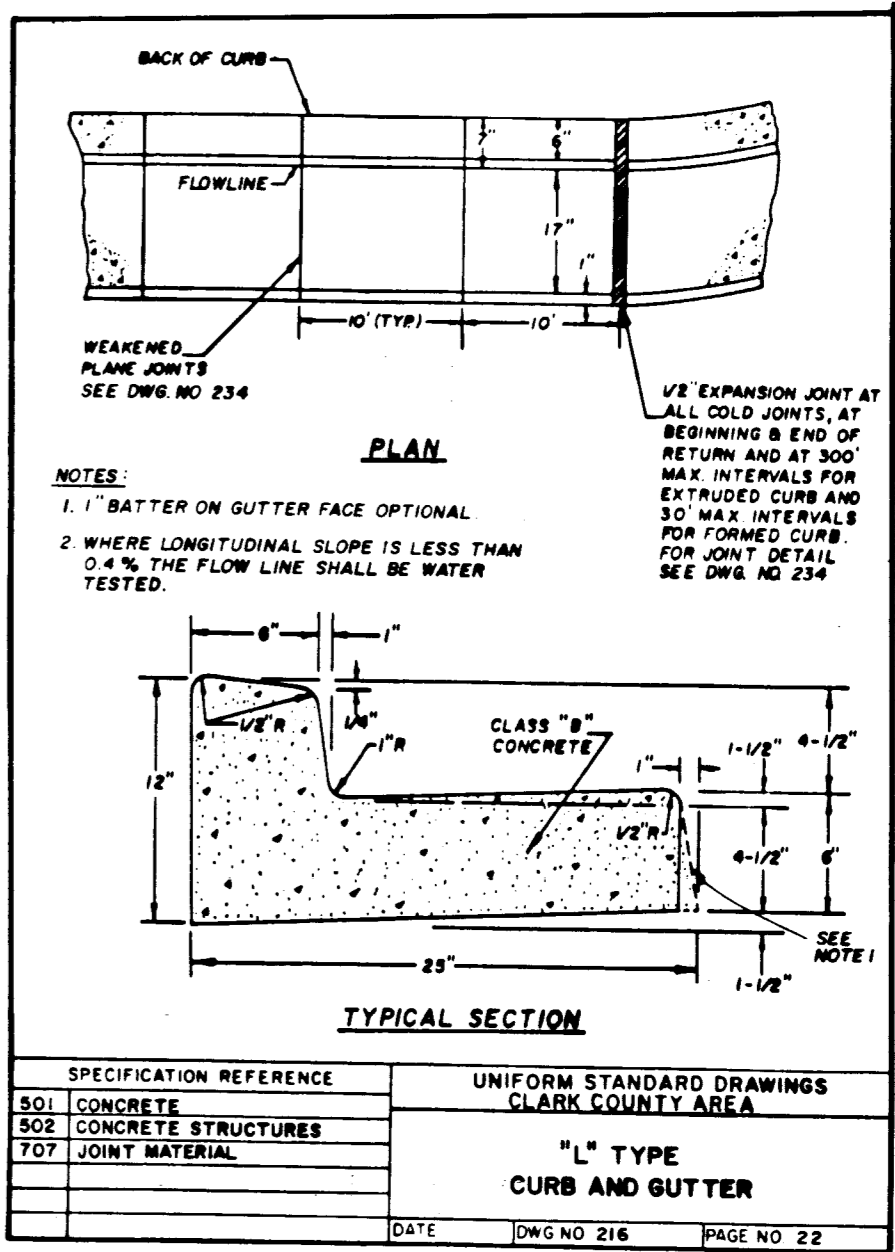
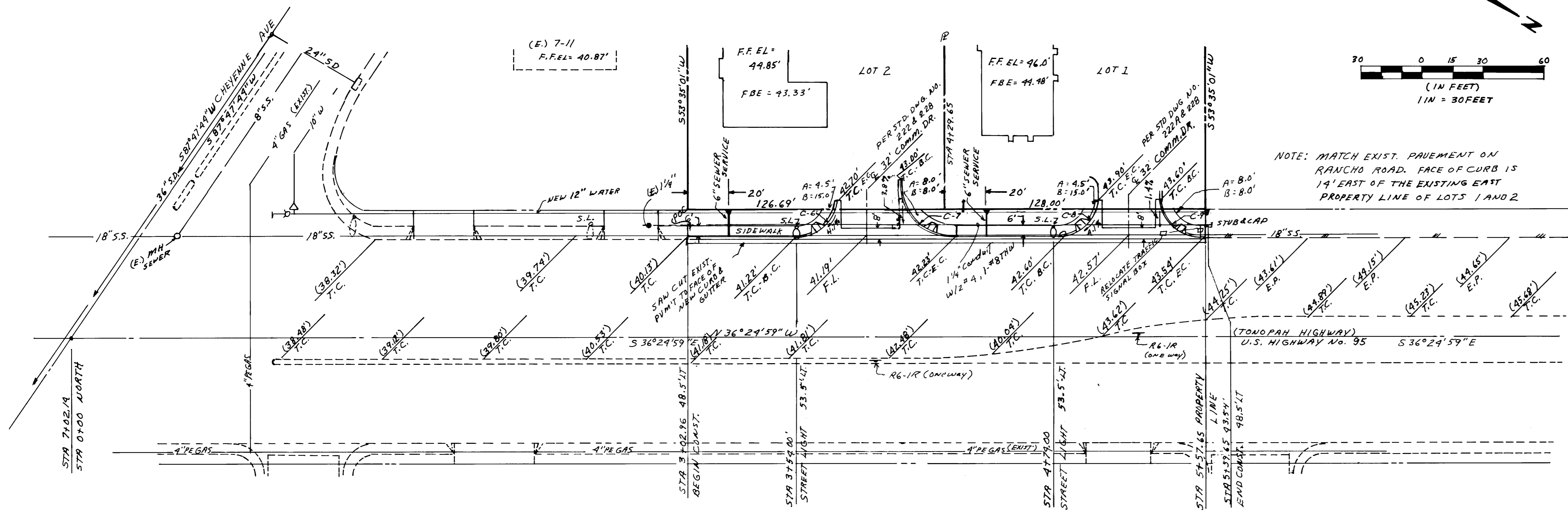
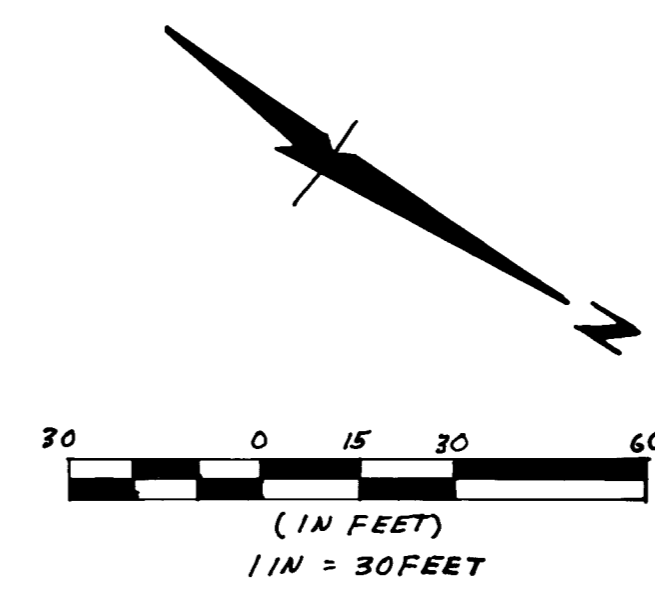


CURVE	RADIUS	DELTA	LENGTH	TANGENT	A	B
C6	20'	90°	31.42'	20.00'	4.5'	15.0'
C7	30'	90°	47.12'	30.00'	8.0'	8.0'
C8	20'	90°	31.43'	20.00'	4.5'	15.0'
C9	25'	90°	39.27'	25.0'	8.0'	8.0'

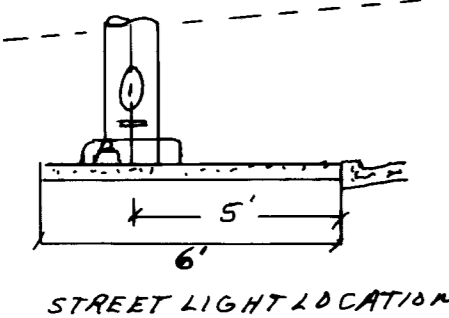
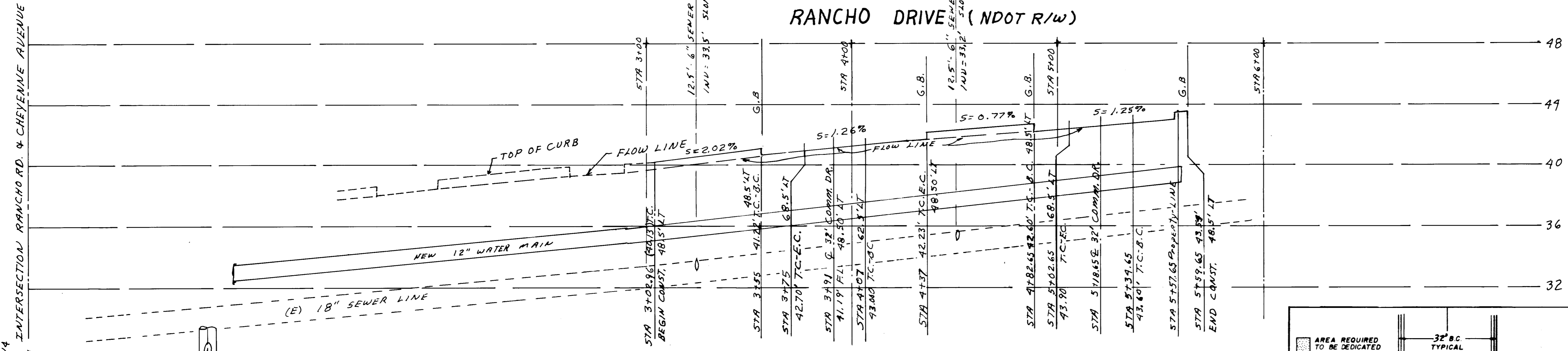


A NDOT PERMIT IS REQUIRED FOR ALL IMPROVEMENTS WITHIN THE NDOT R/W.

BENCHMARK:  
CITY OF LAS VEGAS VERTICAL CONTROL: NAVD 88:  
STATION: CCBM, 12SSE6, 2,241.203 FEET, RIVET & PLATE IN TOP OF CURB, NW RETURN OF CHEYENNE AVE. AND RANCHO ROAD.

APPROVED FOR CONSTRUCTION

(NDOT) NEVADA DEPARTMENT OF TRANSPORTATION DATE PUBLIC HIGHWAY



STREET LIGHT NOTE:  
ALL HAND HOLE COVERS MUST BE INSTALLED, POLE CAPS POURED, AND PULL BOX LIDS BOLTED DOWN PRIOR TO ENERGIZING CIRCUIT, ALL WIRE MUST HAVE THW INSULATION.

NOTE: CONSTRUCTION TO BE DONE ON THE WEST SIDE OF RANCHO DRIVE ONLY UNDER THIS CONTRACT.

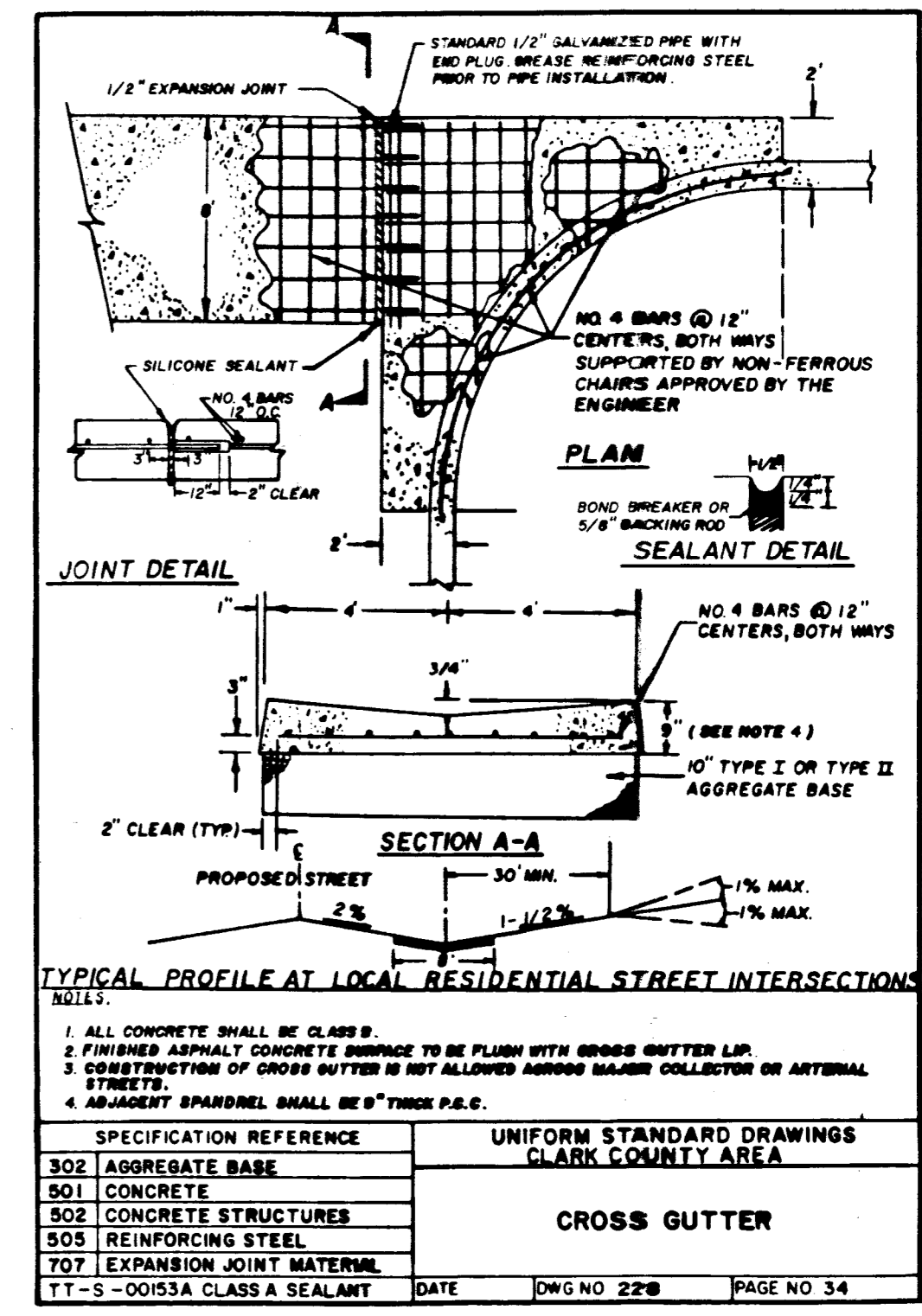
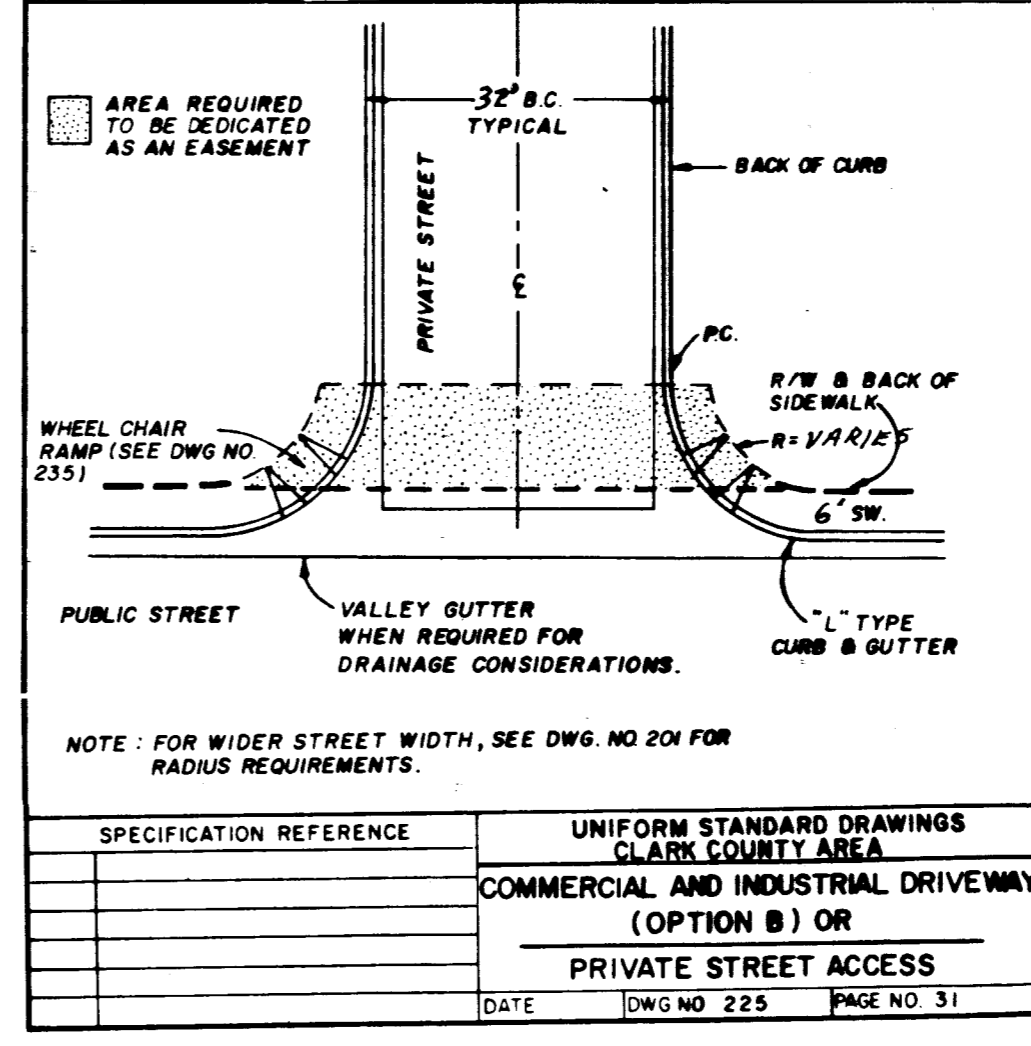
SCALE: 1" = 30' HORIZ.  
1" = 4' VERT.

ST. LIGHTS ON RANCHO ROAD TO BE BREAK-A-WAY TYPE POLES W/12" AROUND, 250W H.P.S. LUMINAIRES PER DWG'S 311, 312, 314, 315, 316 & 318.

SIDWALK

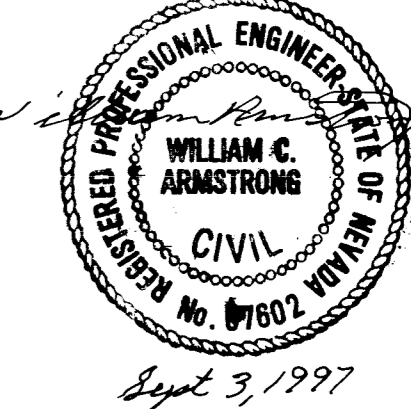
CURB & GUTTER

COMMERCIAL DRIVE



SPECIFICATION REFERENCE	UNIFORM STANDARD DRAWINGS CLARK COUNTY AREA
302 AGGREGATE BASE	301 CONCRETE
501 CONCRETE	502 CONCRETE STRUCTURES
502 CONCRETE STRUCTURES	505 REINFORCING STEEL
T07 EXPANSION JOINT MATERIAL	T17-5-00153A CLASS A SEALANT

DATE DWG NO 228 PAGE NO 34



REVISIONS	BY	DATE

ARMSTRONG ENGINEERING & DEVELOPMENT, LTD.  
3840 BRUCE STREET  
LAS VEGAS, NEVADA 89130  
(702) 220-7220

ARMSTRONG ENGINEERING & DEVELOPMENT, LTD.  
3625 SO. MOJAVE, SUITE 1  
LAS VEGAS, NV 89121

SIDEWALK & COMMERCIAL DRIVES  
RANCHO DRIVE.

DATE: 6-22-97  
DRAWN: WCP  
SCALE: 1"=30'  
JOB: REISS  
SHEET 3

OF 7 SHEET(S)

