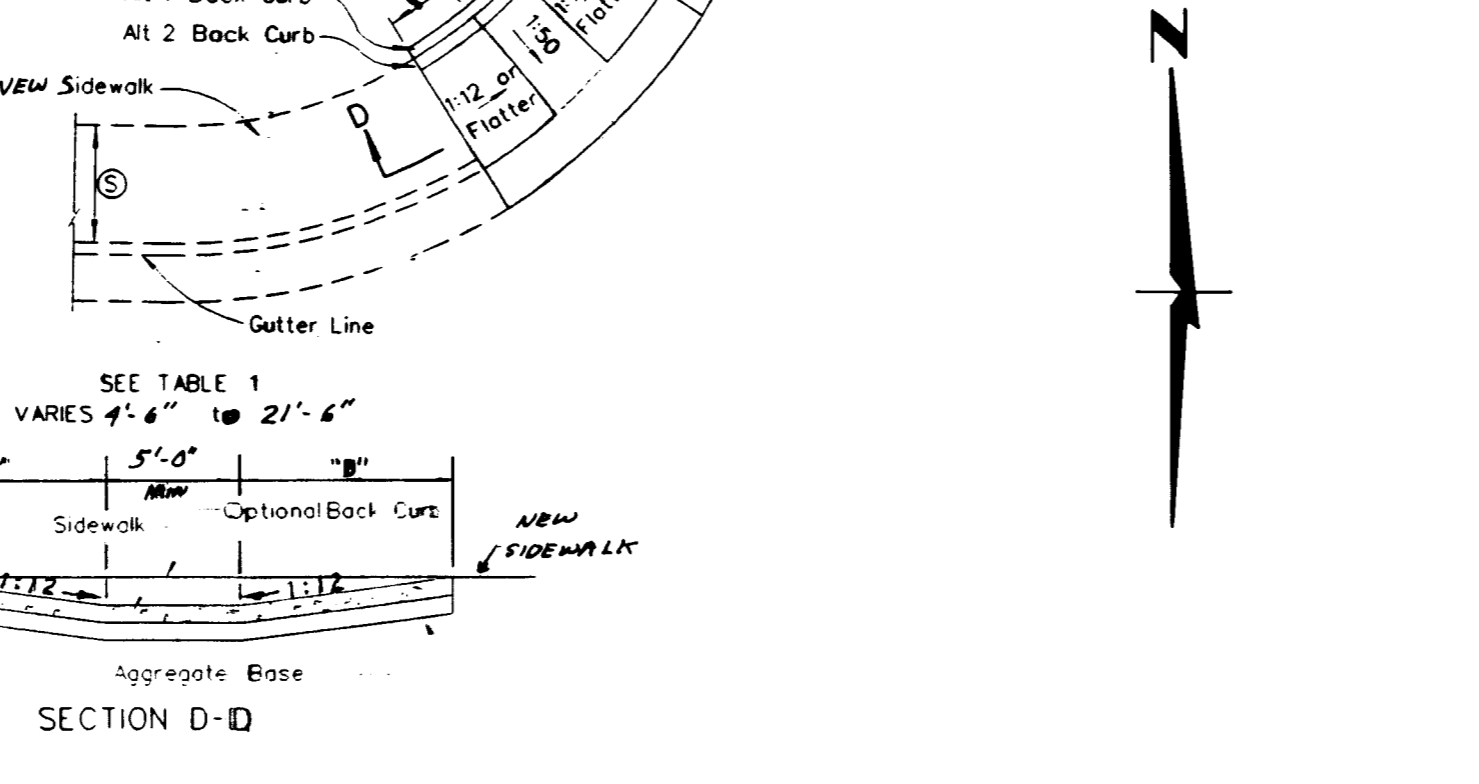
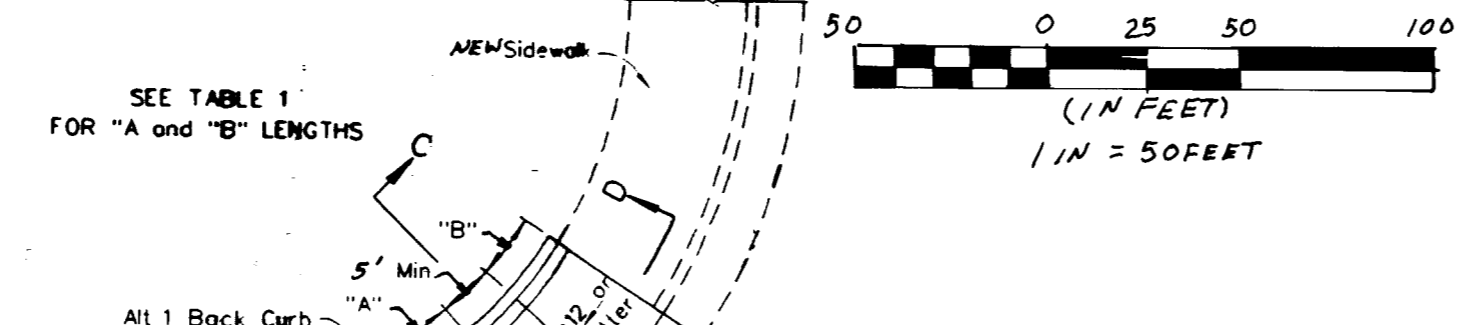
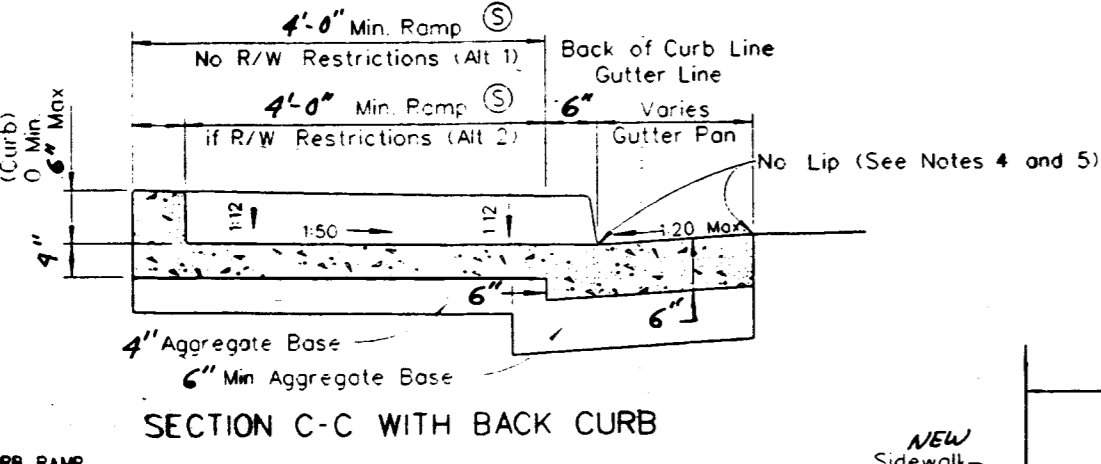
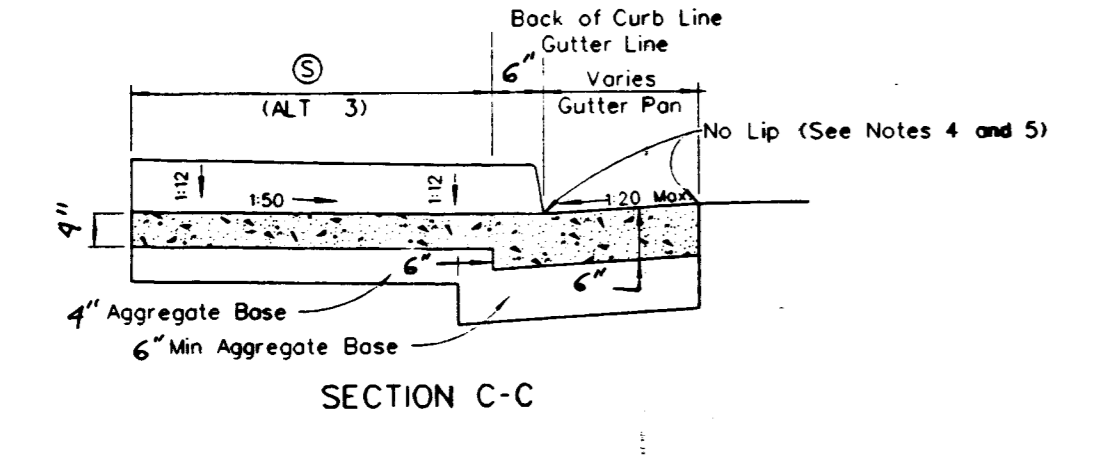


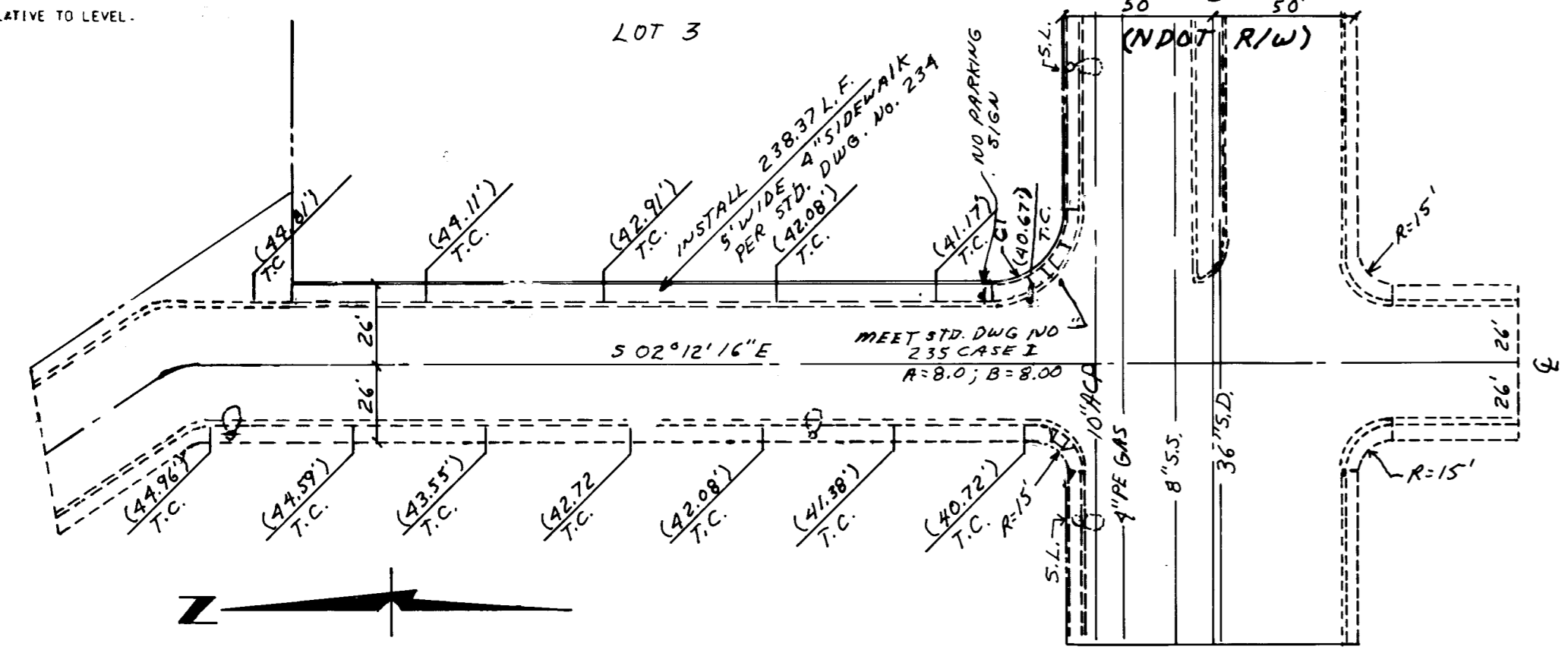
GRADE 'B' TO 'A'	'A' (FT) MIN.	'B' (FT) MIN.
-6 TO -5.01	4.5	21.5
-5 TO -4.01	4.5	15.0
-4 TO -3.01	4.5	12.0
-3 TO -2.01	4.5	9.5
-2 TO 2	8.0	8.0
2.01 TO 3	9.5	4.5
3.01 TO 4	12.0	4.5
4.01 TO 5	15.0	4.5
5.01 TO 6	21.5	4.5

TABLE 1
TRANSITION LENGTHS FOR 1/2 SIDE SLOPES

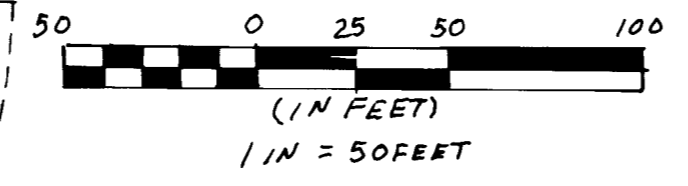
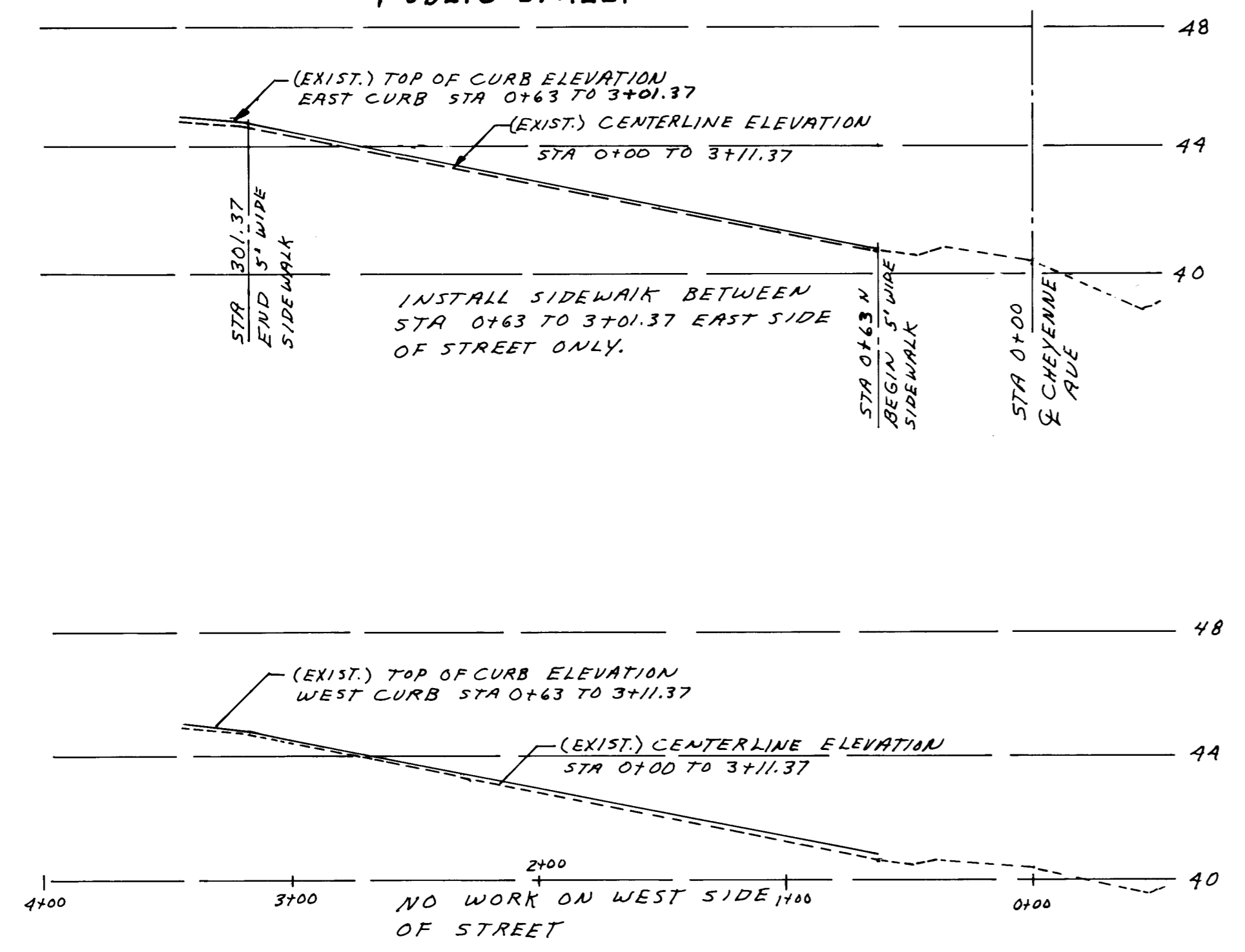


- GENERAL NOTES
- IF RIGHT OF WAY IS AVAILABLE, USE TYPE A CURB RAMP.
 - SEE STRUCTURE LIST AND PLAN SHEETS FOR (A), (B), (C), (D), (E), (F), (G), (H), (I), (J), (K), (L), (M), (N), (O), (P), (Q), (R), (S), (T), (U), (V), (W), (X), (Y), (Z).
 - GRATINGS OR SIMILAR ACCESS SHALL NOT BE LOCATED IN AREA AT THE BASE OF THE CURB RAMP OR LANDING AREA.
 - NO LIP SHALL BE PERMITTED AT THE CURB RAMP SLOPE TO GUTTER PAN.
 - PLANTING BITUMINOUS OPEN-GRADED SURFACE SHALL BE FLOSH WITH THE EDGE OF THE GUTTER PAN IN THE AREA OF THE CURB RAMP.
 - ROUGH BROOM TEXTURE ON CURB RAMPS AND WINGS. TEXTURE SHALL PROVIDE A VISUAL CONTRAST TO THE SIDEWALK.
 - ALL RAMPS SHALL BE 1:12 OR FLATTER.
 - ALL SLOPE RATES ARE RELATIVE TO LEVEL.

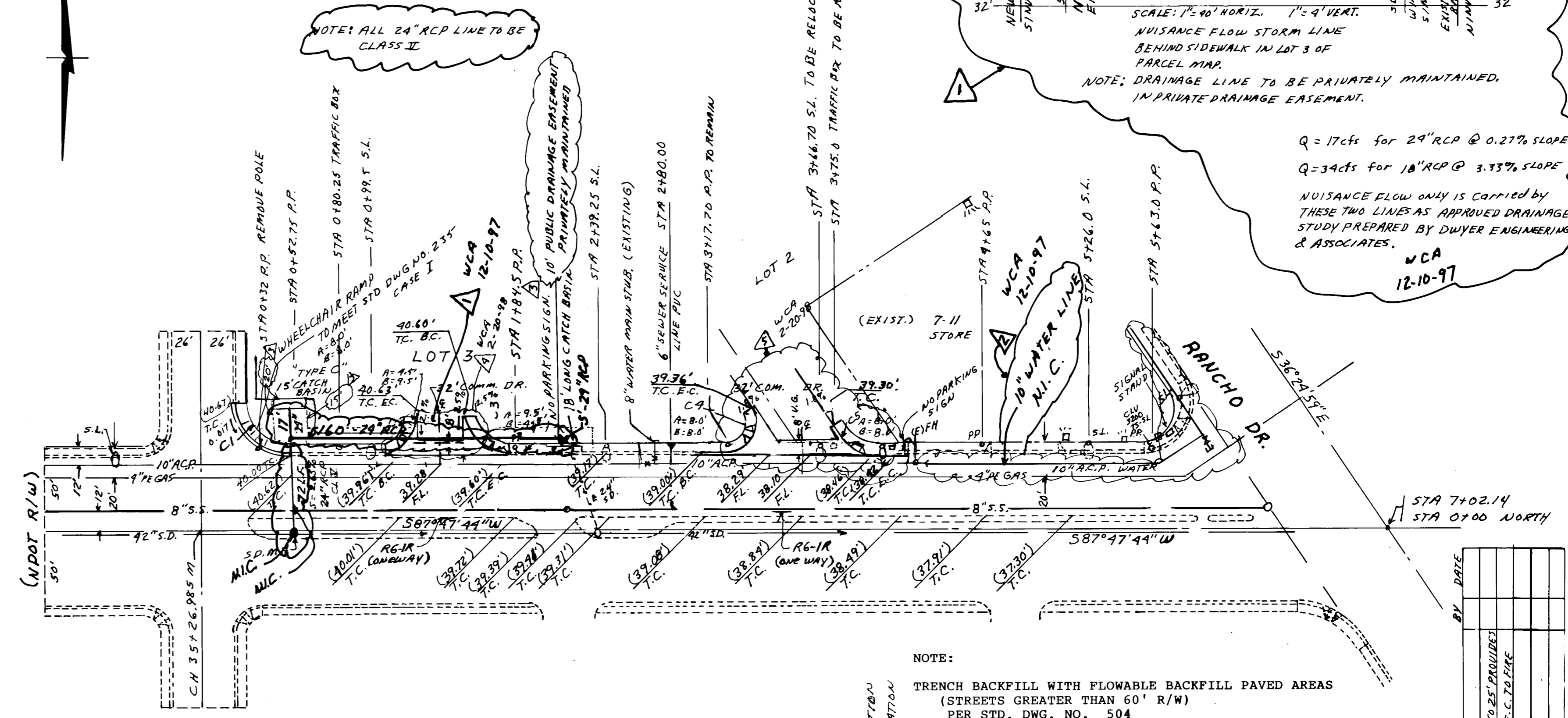
HANDICAPPED RAMPS
PER STD DWG 235
CASE I



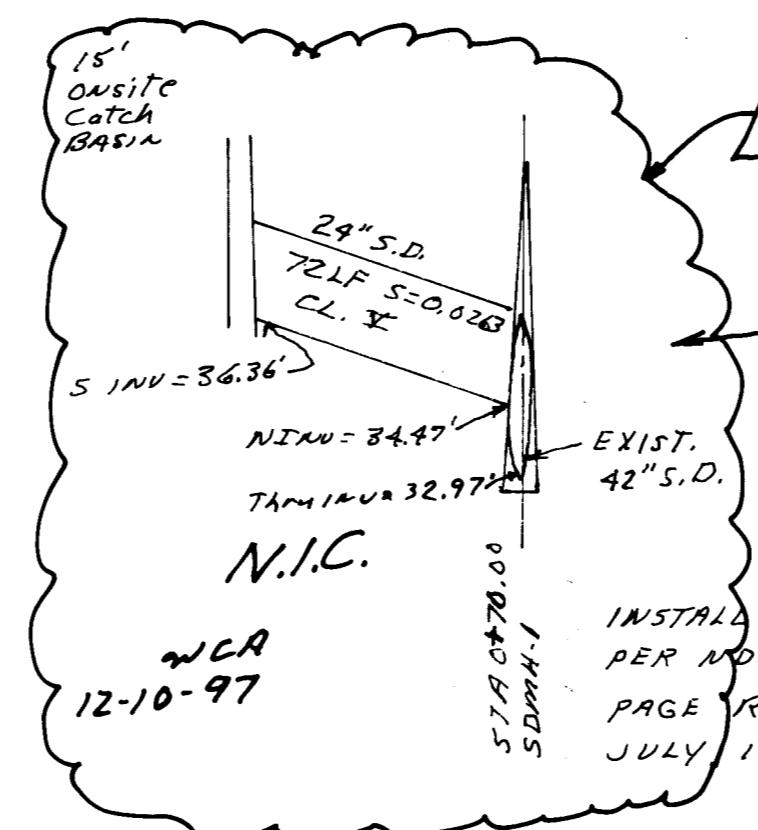
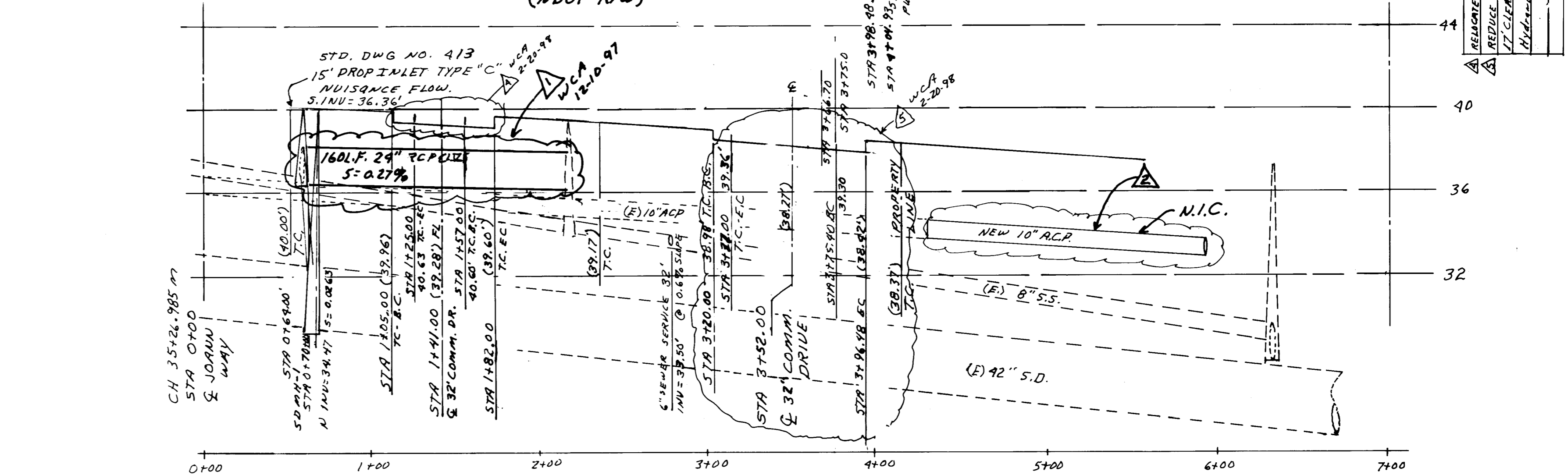
JOANN WAY
PUBLIC STREET



CURVE	RADIUS	DELTA	LENGTH	TANGENT	A	B
C1	25'	90°	39.27'	25.00'	8.0'	8.0'
C2	20'	90°	31.42'	20.00'	4.5'	9.5'
C3	25'	90°	39.27'	25.00'	9.5'	4.5'
C4	15'	141°22'45\"	37.13'	42.81'	8.0'	8.0'
C5	25'	55°47'17\"	24.23'	13.24'	8.0'	8.0'



CHEYENNE AVENUE
(NDOT R/W)



NOTE: 1\"/>

COMMERCIAL DRIVE

SEE UPPER RIGHT FOR REVISION

INSTALL TYPE 4 MANHOLE
PER NDOT R-9.7.2
PAGE R-36 STANDARD PLANS
JULY 1996

- NOTE:
- TRENCH BACKFILL WITH FLOWABLE BACKFILL PAVED AREAS (STREETS GREATER THAN 60' R/W) PER STD. DWG. NO. 504
 - PIPE TRENCH BEDDING METHODS PER STD. DWG. NO. 505 USE CLASS "B" BEDDING

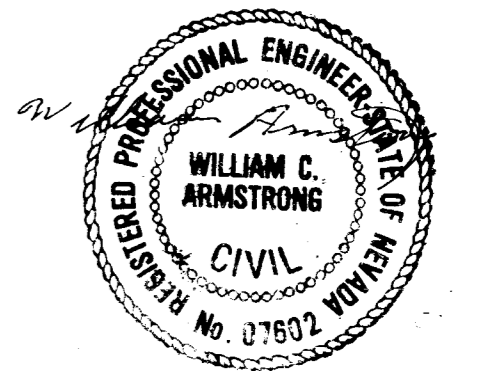
APPROVED FOR CONSTRUCTION

(NDOT) NEVADA DEPARTMENT OF TRANSPORTATION DATE PUBLIC HIGHWAY

A NDOT PERMIT IS REQUIRED FOR ALL IMPROVEMENTS WITHIN THE NDOT R/W.

BENCHMARK:

CITY OF LAS VEGAS VERTICAL CONTROL: NAVD 88: STATION: CCBM, 12SSE6, 2,241.203 FEET, RIVET & PLATE IN TOP OF CURB, NW RETURN OF CHEYENNE AVE. AND RANCHO ROAD.



Sept. 3, 1997

REVISIONS	BY	DATE
1	WCA	12-10-97
2	WCA	12-10-97
3	WCA	12-10-97
4	WCA	12-10-97
5	WCA	12-10-97
6	WCA	12-10-97
7	WCA	12-10-97
8	WCA	12-10-97
9	WCA	12-10-97
10	WCA	12-10-97
11	WCA	12-10-97
12	WCA	12-10-97
13	WCA	12-10-97
14	WCA	12-10-97
15	WCA	12-10-97
16	WCA	12-10-97
17	WCA	12-10-97
18	WCA	12-10-97
19	WCA	12-10-97
20	WCA	12-10-97
21	WCA	12-10-97
22	WCA	12-10-97
23	WCA	12-10-97
24	WCA	12-10-97
25	WCA	12-10-97
26	WCA	12-10-97
27	WCA	12-10-97
28	WCA	12-10-97
29	WCA	12-10-97
30	WCA	12-10-97
31	WCA	12-10-97
32	WCA	12-10-97
33	WCA	12-10-97
34	WCA	12-10-97
35	WCA	12-10-97
36	WCA	12-10-97
37	WCA	12-10-97
38	WCA	12-10-97
39	WCA	12-10-97
40	WCA	12-10-97
41	WCA	12-10-97
42	WCA	12-10-97
43	WCA	12-10-97
44	WCA	12-10-97
45	WCA	12-10-97
46	WCA	12-10-97
47	WCA	12-10-97
48	WCA	12-10-97
49	WCA	12-10-97
50	WCA	12-10-97

ARMSTRONG ENGINEERING & DEVELOPMENT, LTD.
3840 N. BRUCE STREET
LAS VEGAS, NEVADA 89130
(702) 220-7220

RONALD REISS TRUST
3625 SO. MOJAVE, SUITE 1
LAS VEGAS, NV 89121

SIDEWALK - JOANN WAY
COMMERCIAL DRIVES - CHEYENNE AVE.

