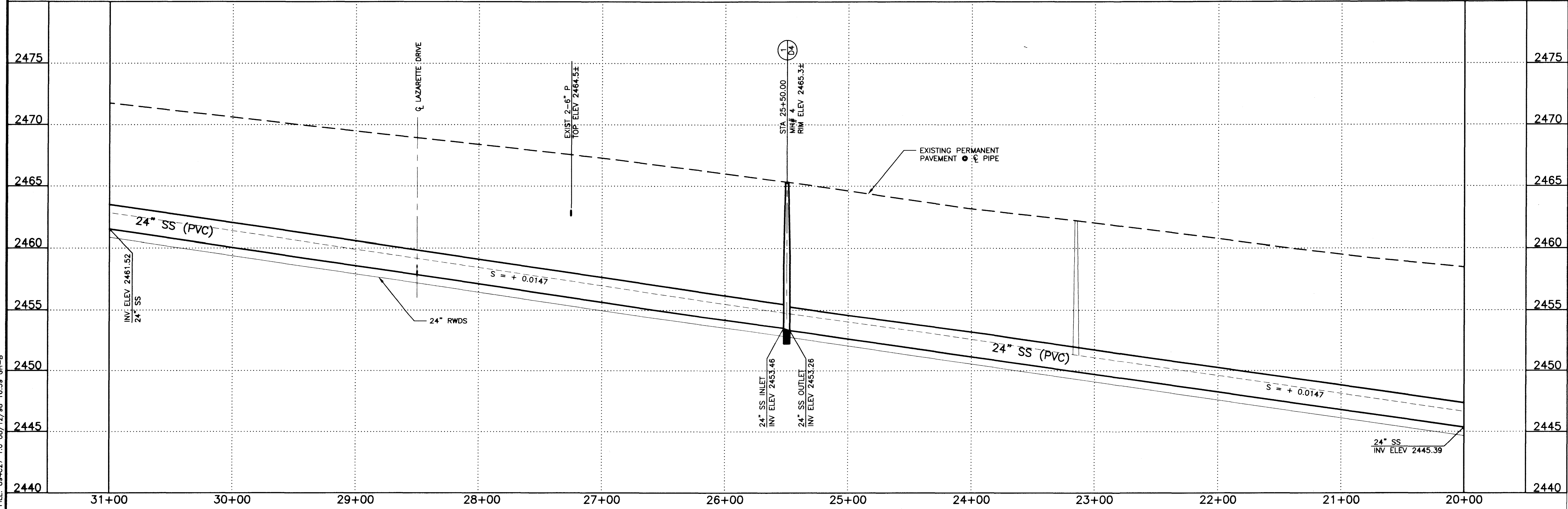
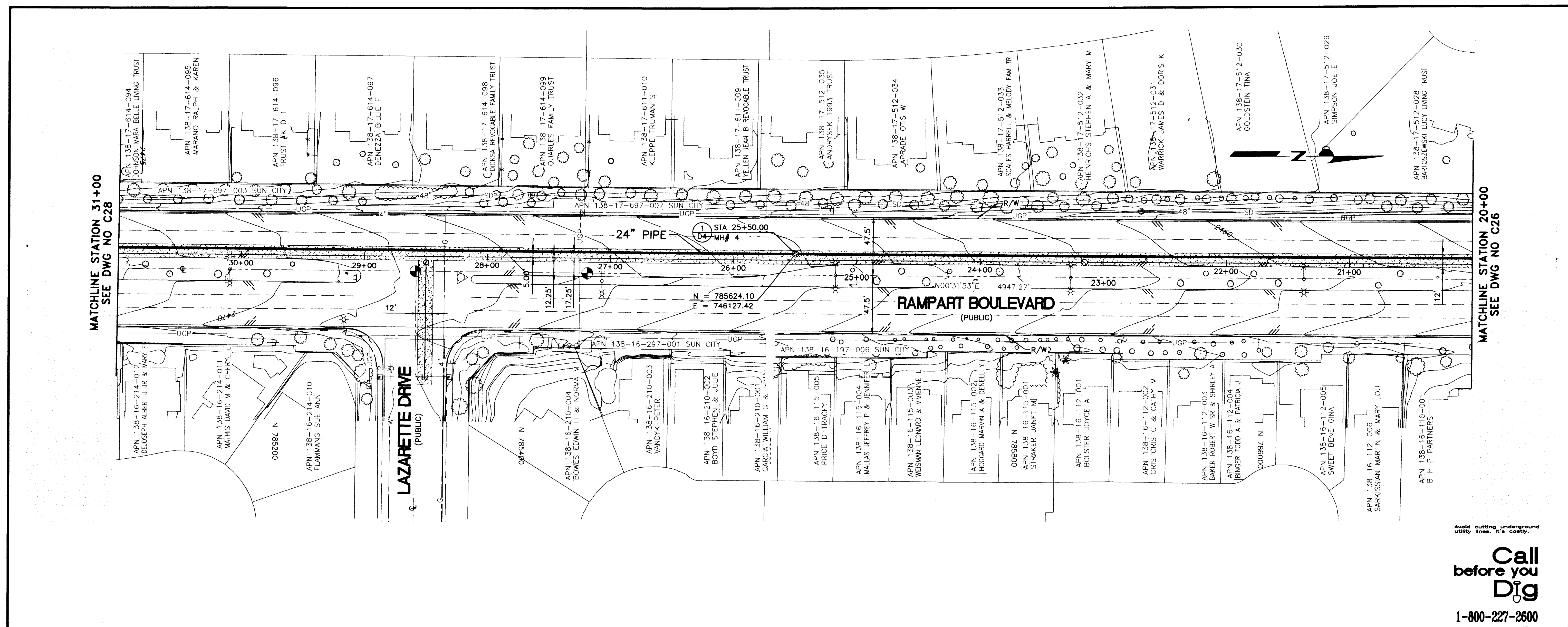


FILE: 894C27 1.0 08/12/98 16:59 GH-B



Avoid cutting underground utility lines. It's costly.

Call before you Dig

1-800-227-2600

LAS VEGAS VALLEY WATER DISTRICT

GREELEY AND HANSEN
ENGINEERS

4625 SOUTH POLARIS AVENUE, SUITE 210
LAS VEGAS, NEVADA 89103

VERIFY SCALE

1/2" = 0' 1/2"

BAR REPRESENTS ONE AND ONE-HALF INCHES ON ORIGINAL

RECYCLED WATER DISTRIBUTION SYSTEM - RAMPART BLVD PIPELINE

INFLUENT SEWER - PLAN AND PROFILE

STA 20+00 TO STA 31+00

SCALE: HORIZ. SCALE 1" = 40' VERT. SCALE 1" = 4'

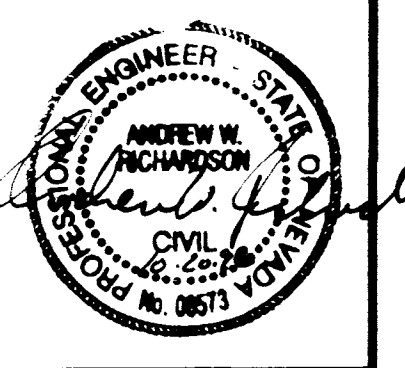
894C27.DWG Plot 10/20/98 12:24

DRAWN BY: R. ATLEE 1/19/98

CHECKED BY: M. PETERSON 6/10/98

RECOMMENDED BY: RALPH G. JANGA 12/02 R.P.E. NO. DATE

ACCEPTED BY: ANDREW W. RICHARDSON 8/23 R.P.E. NO. DATE

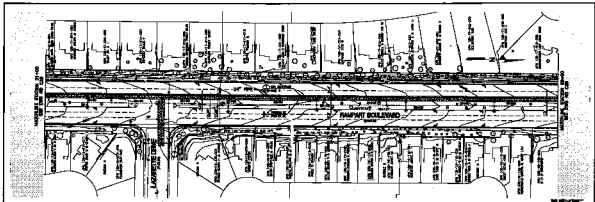
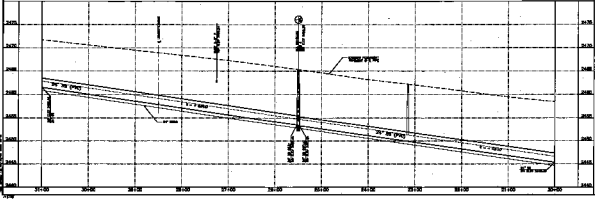


CONTRACT NUMBER

894

DRAWING NUMBER C27
SHEET 35 OF 51

565-308



Call

 D

 P

 1-88-02-00



PROJECT NO. 88-02-00
 SHEET NO. 10 OF 10
 DATE: 11/15/88

BECKLE WITH DIMENSION NOTES - SEE PLAN FOR PROFILE
 INFLUENT SEWER - PLAN AND PROFILE
 STA. 30+00 TO STA. 31+00
 SCALE: 1" = 40'

V. L. S.
 REGISTERED PROFESSIONAL ENGINEER
 STATE OF NEVADA

LE WALK WALKWAY WATER SERVICE
 CROSBY AND HARMON
 ENGINEERS
 403 SOUTH POLARIS AVENUE, SUITE 113
 LAS VEGAS, NEVADA 89103