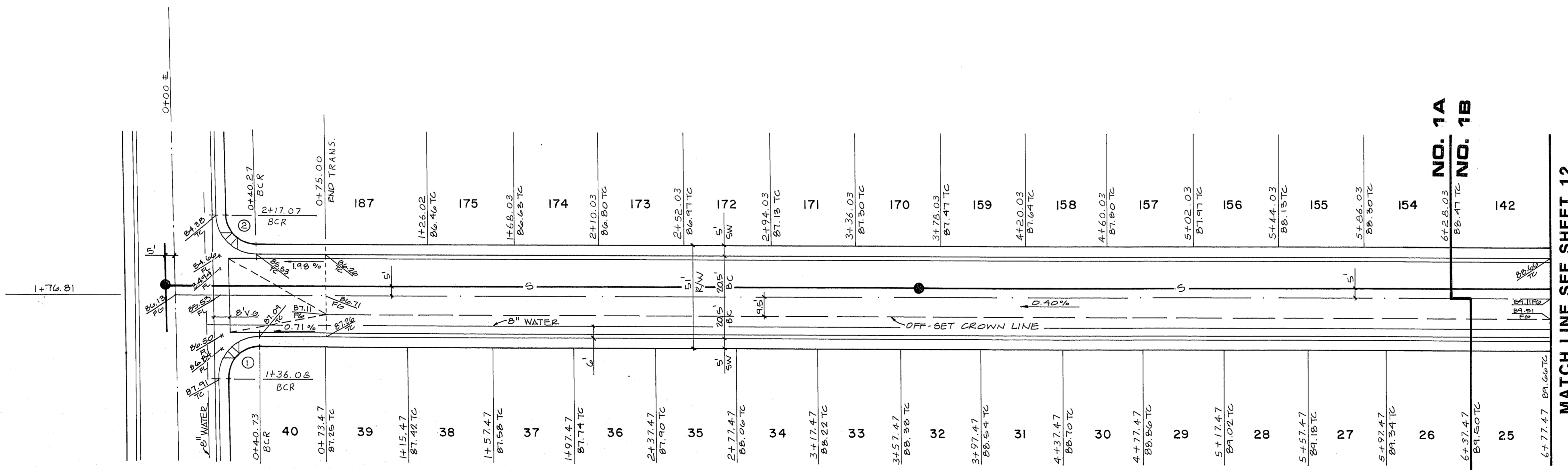
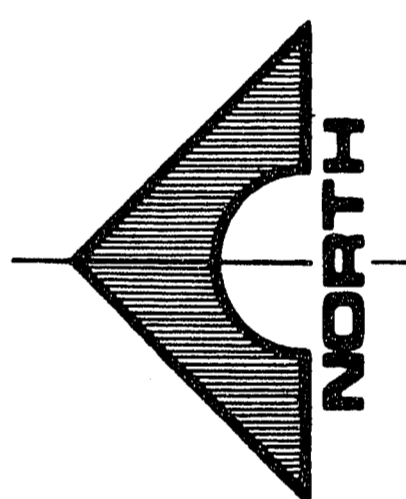


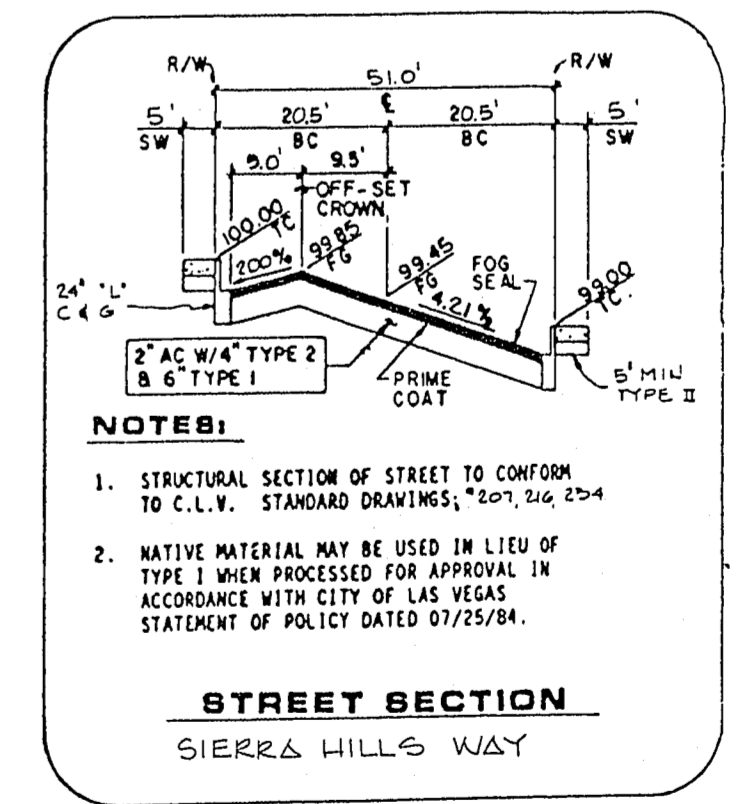
PROFILE
SCALE: HORIZ. 1" = 30'
VERT. 1" = 3'



OLD MISSION DR.
SEE SHEET 20

NO. 1A
NO. 1B

MATCH LINE SEE SHEET 12



- NOTES:**
- STRUCTURAL SECTION OF STREET TO CONFORM TO C.I.V. STANDARD DRAWINGS, 501 306-274
 - NATIVE MATERIAL MAY BE USED IN LIEU OF TYPE I WHEN PROCESSED FOR APPROVAL IN ACCORDANCE WITH CITY OF LAS VEGAS STATEMENT OF POLICY DATED 07/25/84.

BCR CURVE DATA

| NO. | A | R | L | T |
|-----|-------------|--------|--------|--------|
| ① | 90° 19' 33" | 20.00' | 31.53' | 20.11' |
| ② | 89° 40' 27" | 20.00' | 31.30' | 19.89' |

REVISIONS

| REV | DATE | DESCRIPTION |
|-----|---------|-------------------|
| 1 | 8-24-10 | ISSUE FOR PERMITS |
| 2 | 9/10/10 | CHANGE ST. NAMES |

5555 R.E. NO. DATE

REGISTERED PROFESSIONAL ENGINEER STATE OF NEVADA
G. C. WALLACE, INC.
1555 SOUTH RAINBOW BLVD. LAS VEGAS, NEVADA 89102

G.C. WALLACE, INC.
Engineering/Architecture

LEWIS HOMES OF NEVADA
LEWIS HOMES - TENAYA EAST
SIERRA HILLS WAY
STA. 0+00.00 TO STA. 6+77.47

SHEET
11
OF 28 SHEETS