

PROJECT BENCHMARK

B.L.M. BRASS CAP AT INTERSECTION
OF CHARLESTON & DURANGO.
ELEVATION: 2663.94

LEGEND

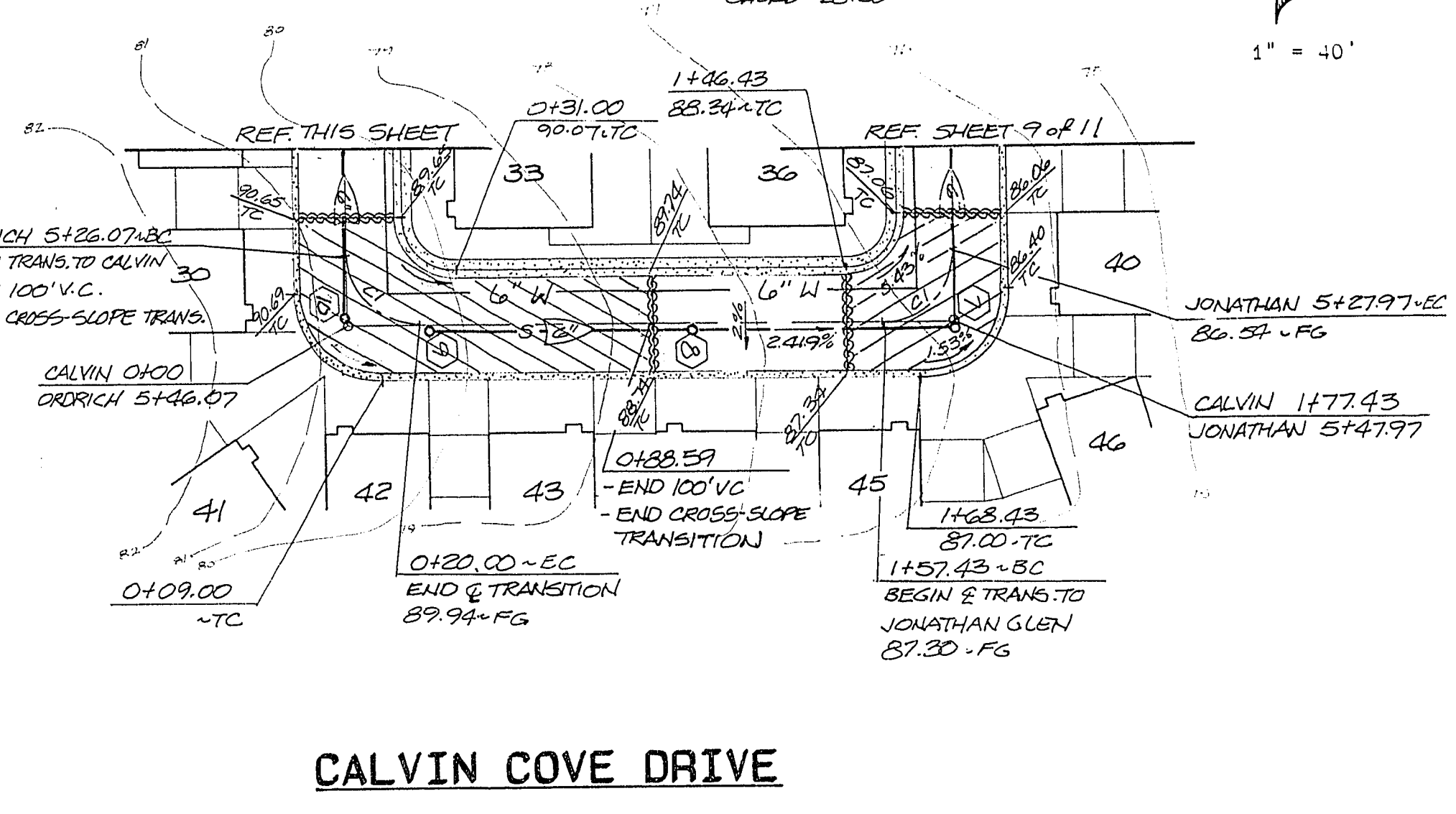
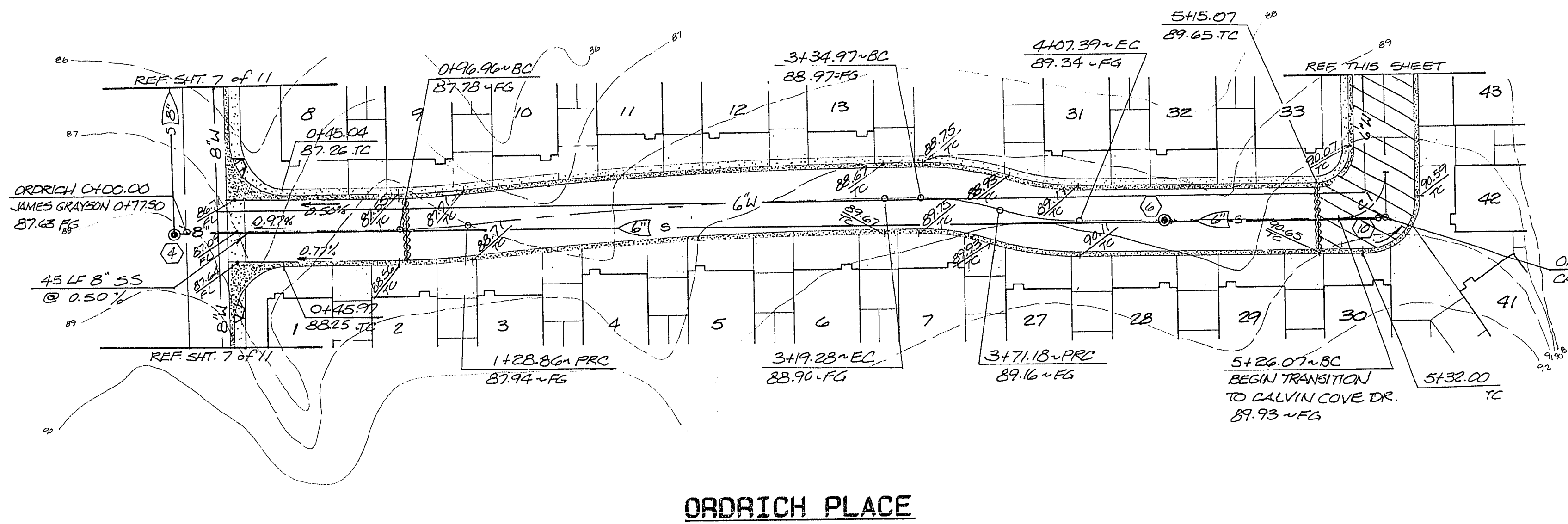
- PROPOSED A.C. PAVEMENT
- PROPOSED CONCRETE
- PAVEMENT TRANSITION AREA
- EXISTING CONTOUR LINES
- GRADE BREAK
- LOT NUMBER

LEGEND

- FLOWLINE ELEVATION
- ELEV. @ GRADE BREAK
- ELEV. @ FINISHED GRADE
- ELEV. @ HIGH PT./LOW PT.
- ELEV. @ TOP OF CURB
- SANITARY SEWER W/FLOW, M.H. AND M.H. NUMBER

REFER TO SHEET 9 OF 11 FOR TYPICAL
ROADWAY SECTION (APPLIES TO SHT. 9 &
10 ONLY).

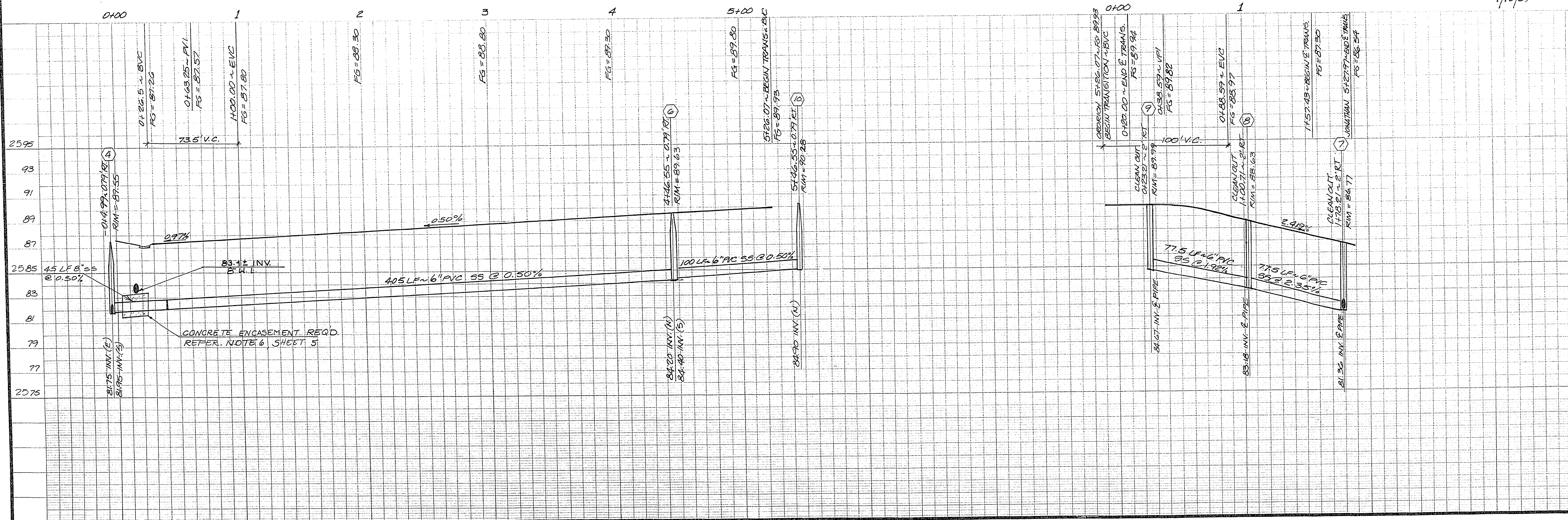
CURVE DATA
C.I. RADIUS=20.00'
DELTA=90°00'00"
LENGTH=31.41'
CHORD=28.28'



ORDRICH PLACE

CALVIN COVE DRIVE

Handwritten signature: Todd J. Steiner
4/12/89



SUMMIT™ ENGINEERING CORPORATION
CONSULTING ENGINEERS AND SURVEYORS
1145 EAST YERGEN AVENUE, SUITE 102, LAS VEGAS, NEVADA 89149
PHONE: (702) 736-1801

DESIGNED BY: KEK
DRAWN BY: STAFF
CHECKED BY: ILK
DATE: FEB., 1989

ORDRICH PLACE/CALVIN COVE DRIVE
JONATHAN'S GLEN
GLENVIEW DEVELOPMENT CORPORATION
LAS VEGAS, CLARK COUNTY, NEVADA

REV.	DATE	DESCRIPTION	BY	APP'D
2	2-24-89			
1				

SCALE: HORIZ. 1" = 40', VERT. 1" = 4'
JOB NO. 289002

SHEET 10 OF 11