

**LOS PRADOS - PHASE 2 - UNIT 2**  
 A PORTION OF SECTION 36, T. 19 S., R. 60 E., M.D.M.,  
 CITY OF LAS VEGAS, CLARK COUNTY, NEVADA.

**CURVE TABLE (THIS SHEET ONLY)**

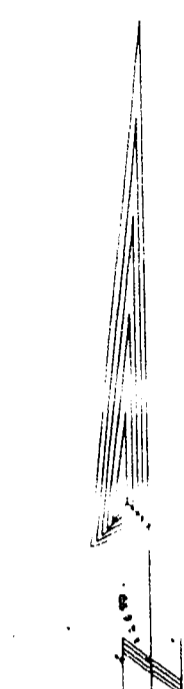
CURVE	ARC	DELTA	RADIUS	TAN LENGTH
C1	14.45	2°35'12"	300.00	7.22
C2	56.30	0°52'19"	3700.00	28.15
C3	27.95	0°25'58"	3700.00	13.97
C4	24.35	0°58'35"	200.00	12.19
C5	30.90	89°31'38"	20.00	19.49
C6	55.97	14°33'00"	220.00	26.09
C7	77.45	20°10'21"	220.00	39.13
C8	9.93	2°35'12"	220.00	4.97
C9	54.76	0°52'19"	3600.00	27.39
C10	79.77	1°15'10"	3600.00	39.89
C11	81.26	14°33'00"	320.00	40.85
C12	22.00	84°02'11"	15.00	13.51
C13	81.07	12°33'13"	370.00	40.70
C14	37.96	3°55'39"	370.00	18.99
C15	25.54	0°23'25"	3750.00	12.77
C16	72.89	1°06'49"	3750.00	36.45
C17	84.34	1°17'19"	3750.00	42.17
C18	25.52	9°29'42"	15.00	17.10
C19	43.29	19°50'33"	125.00	21.87
C20	53.20	4°07'08"	740.00	26.61
C21	32.67	74°52'52"	25.00	19.14
C22	50.74	0°44'03"	3960.00	25.37
C23	74.45	1°04'38"	3960.00	37.23
C24	23.05	0°20'01"	3960.00	11.53
C25	35.50	16°16'18"	125.00	17.87
C26	41.25	18°54'35"	125.00	26.82
C27	23.56	30°00'00"	15.00	15.00
C28	26.79	81°03'32"	25.00	14.84
C29	63.46	0°54'17"	4000.00	31.58
C30	22.78	0°19'35"	4000.00	11.39
C31	73.84	1°03'28"	4000.00	36.92
C32	72.27	1°02'07"	4000.00	36.14
C33	29.56	2°32'12"	590.00	14.78
C34	82.75	8°02'25"	590.00	41.47
C35	63.33	6°08'59"	590.00	31.69
C36	36.39	3°32'01"	590.00	18.20
C37	29.07	2°58'27"	590.00	14.54
C38	36.84	10°09'32"	20.00	26.32
C39	6.73	2°34'20"	150.00	3.37
C40	70.61	1°04'44"	3750.00	35.31
C41	22.18	84°42'17"	15.00	13.67
C42	52.59	17°13'10"	175.00	26.50
C43	18.47	8°02'53"	175.00	9.24
C44	42.55	3°32'01"	690.00	21.28
C45	69.80	5°47'45"	690.00	34.93
C46	4.28	9°48'45"	25.00	2.15
C47	8.70	19°56'14"	25.00	4.29
C48	47.72	45°34'11"	60.00	25.20
C49	46.31	44°13'08"	60.00	24.37
C50	43.07	41°07'40"	60.00	22.51
C51	12.12	27°47'14"	25.00	6.18
C52	3.78	0°07'31"	40.00	1.91
C53	64.68	0°55'22"	40.00	32.34
C54	56.30	0°57'21"	40.00	33.45
C55	46.05	35°10'53"	75.00	23.78
C56	55.69	12°38'21"	25.00	30.85
C57	39.01	55°11'37"	40.00	17.17
C58	55.11	8°41'20"	370.00	28.11
C59	45.96	43°53'05"	60.00	24.17
C60	38.82	29°26'00"	60.00	15.76
C61	12.48	28°36'52"	25.00	6.28
C62	12.79	18°05'41"	40.50	6.45
C63	42.40	55°59'17"	40.50	23.38
C64	40.00	13°05'45"	175.00	20.09
C65	73.21	27°57'49"	150.00	37.35
C66	61.40	35°10'53"	100.00	31.70
C67	145.89	24°23'41"	345.00	74.57
C68	103.08	1°40'40"	3725.00	54.55
C69	71.07	23°16'03"	175.00	36.03
C70	12.98	29°45'00"	25.00	6.64
C71	76.75	35°10'53"	125.00	39.63
C72	119.02	18°25'52"	370.00	60.03
C73	66.53	1°01'49"	3700.00	33.27
C74	64.73	1°01'49"	3600.00	32.37
C75	61.52	9°31'38"	370.00	30.88
C76	87.95	15°44'54"	320.00	44.26
C77	62.47	8°44'52"	220.00	30.43
C78	61.40	0°57'03"	3700.00	30.70
C79	59.74	0°57'03"	3600.00	29.87
C80	39.93	56°29'19"	40.50	21.76
C81	12.25	28°04'21"	25.00	6.25
C82	83.65	8°33'50"	560.00	41.90

**COURSE TABLE (THIS SHEET ONLY)**

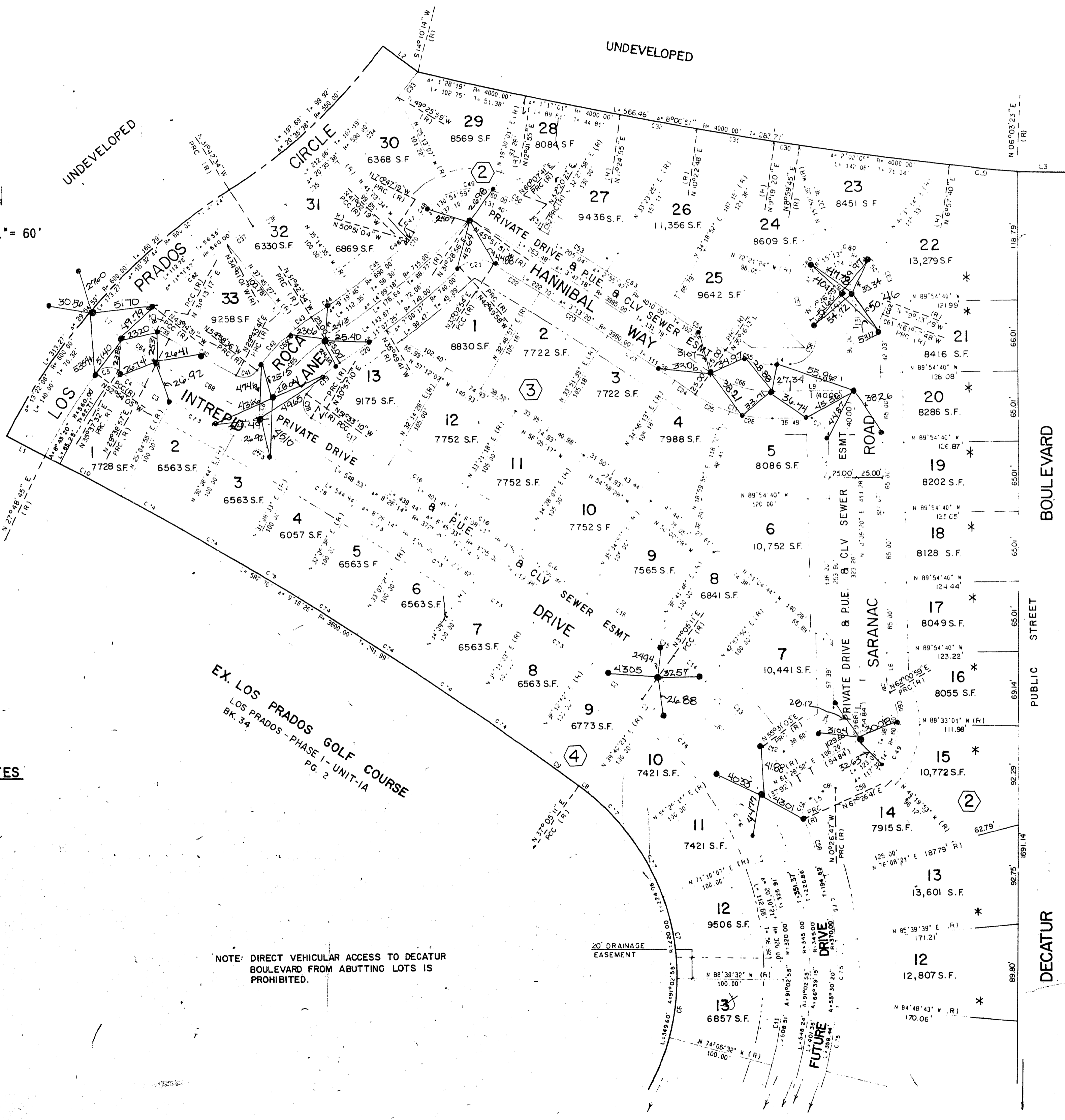
LINE	BEARINGS	DISTANCE
L1	N 61°37'28" W (R)	40.00
L2	S 52°18'12" E (R)	40.00
L3	S 88°50'28" E	50.00
L4	S 89°54'40" E	17.12
L5	N 61°28'50" E	13.44
L6	N 0°05'20" E	25.04
L7	N 48°15'18" W (R)	38.32
L8	N 30°19'38" E (R)	24.24
L9	N 89°54'40" W	76.49
L10	N 89°54'40" W	7.50

**LEGEND & NOTES**  
 SEE SHEET 2 OF 3

NOTE: DIRECT VEHICULAR ACCESS TO DECATUR BOULEVARD FROM ABUTTING LOTS IS PROHIBITED.



SCALE: 1" = 60'



MATCH LINE - SEE SHEET 2 OF 3

N.O. # 3188LP2-2  
 SHEET 3 OF 3

ACT	DATE	BY	ACTION
1	11/1/89	KMJ	REV. LOTS ABUTTING DECATUR BLVD & BOUNDARY

10-10-812

BR. 47, 2686  
 058-4116-2-2