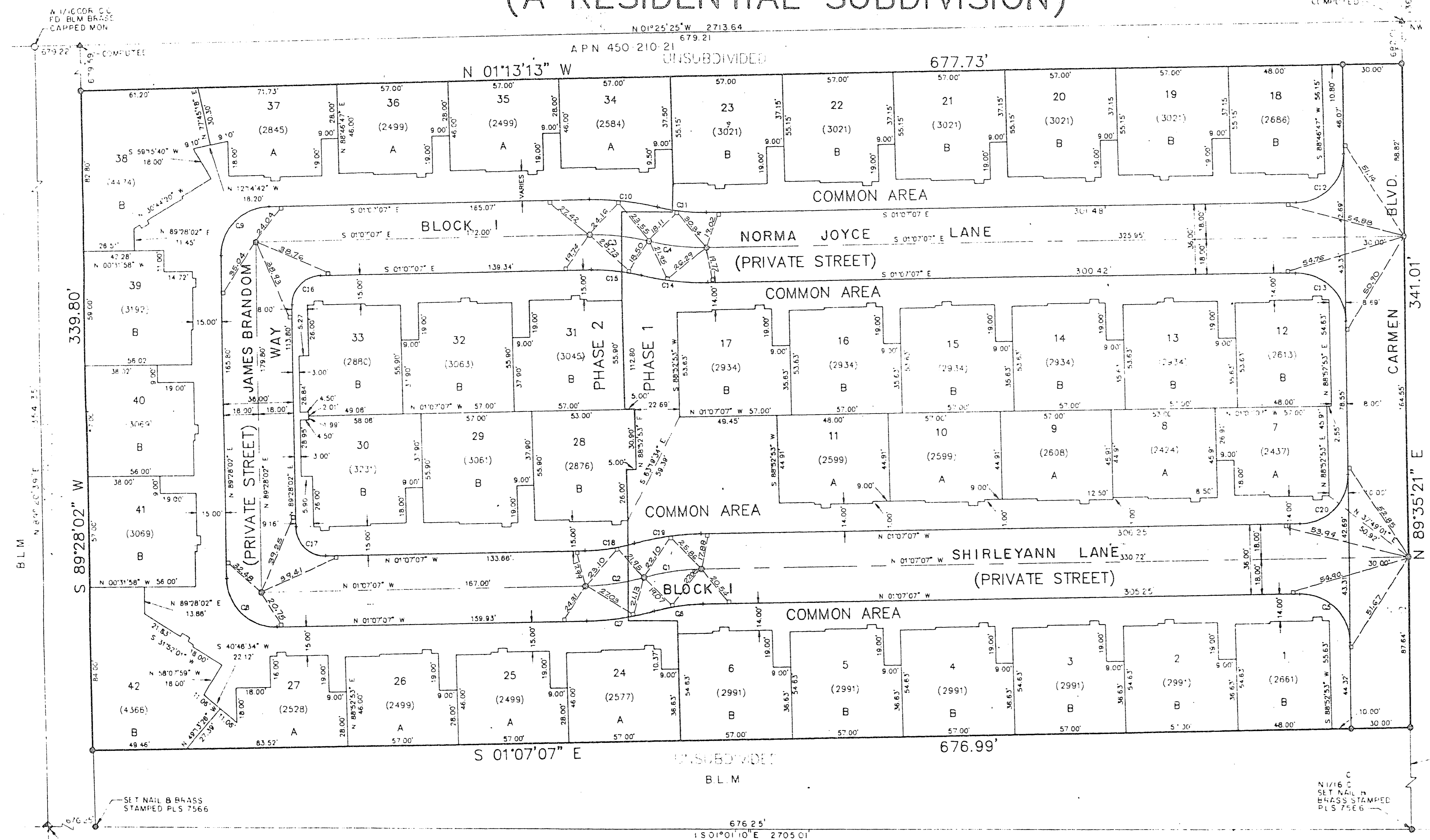


# JONATHAN'S GLEN III

## (A RESIDENTIAL SUBDIVISION)

4-6-26



**LEGEND**

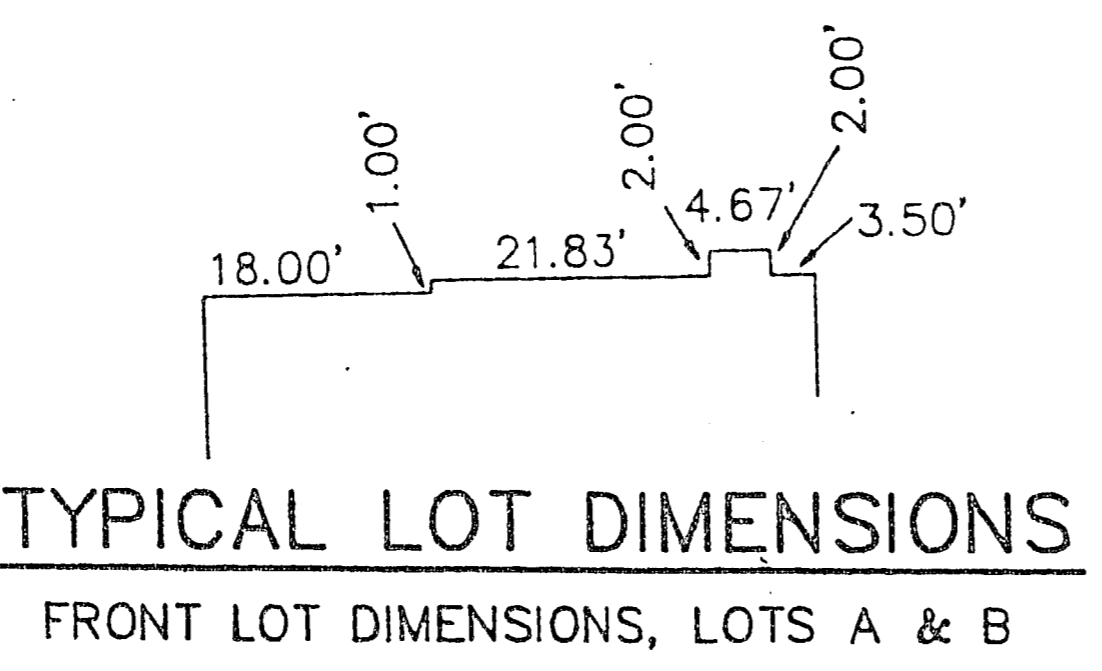
- MONUMENT
- MONUMENT FOUND - AS DESCRIBED
- 20 LOT NUMBER
- (2000) AREA IN SQUARE FEET
- A LOT TYPE DESIGNATION
- ▲ COMPUTED POINT
- TIE MONUMENT

TOTAL AREA = 5.293 ACRES  
TOTAL NUMBER OF LOTS = 42

**COUNTY RECORDERS NOTE**  
ANY SUBSEQUENT CHANGES TO THIS MAP SHOULD BE EXAMINED AND MAY BE DETERMINED BY REFERENCE TO THE COUNTY RECORDERS CUMULATIVE MAP INDEX. (PER NRS 278.5695)

**BASIS OF BEARINGS**  
N 01°07'07" W BEING THE CENTER SECTION OF SECTION 28, TOWNSHIP 20 SOUTH, RANGE 80 EAST, M.D.M. AS SHOWN ON FILE 42 PAGE 15 OF RECORDS & SURVEY, ON FILE IN THE CLARK COUNTY, NEVADA COURT HOUSE

CURVE	RADIUS	LENGTH	CHORD	BEARING	DELTA	TANGENT
C01	118.00'	30.09'	30.01'	S 08°25'23" E	14°36'32"	15.13'
C02	118.00'	30.09'	30.01'	N 09°25'23" W	14°36'32"	15.13'
C03	118.00'	30.07'	30.07'	S 05°10'53" W	14°36'00"	15.12'
C04	118.00'	30.07'	30.07'	N 06°10'53" E	14°36'00"	15.12'
C05	25.00'	38.58'	35.57'	S 44°14'07" W	80°42'27"	20.09'
C06	100.00'	25.43'	25.43'	S 08°25'23" E	14°36'32"	12.76'
C07	136.00'	34.88'	34.88'	N 02°25'23" W	14°36'32"	17.43'
C08	25.00'	39.53'	35.34'	N 44°10'26" E	80°32'09"	25.26'
C09	25.00'	39.01'	35.17'	S 45°49'32" E	89°24'51"	24.75'
C10	136.00'	34.88'	34.88'	S 05°10'53" W	14°36'00"	17.42'
C11	100.00'	25.48'	25.41'	N 06°10'53" E	14°36'00"	12.81'
C12	25.00'	38.96'	35.14'	N 45°45'53" E	89°17'32"	24.69'
C13	136.00'	34.88'	35.57'	S 44°14'07" W	80°42'27"	25.31'
C14	100.00'	25.48'	25.41'	N 06°10'53" E	14°36'00"	12.81'
C15	100.00'	25.48'	25.41'	S 05°10'53" W	14°36'00"	12.81'
C16	15.00'	23.41'	21.10'	S 45°49'32" E	89°24'51"	14.85'
C17	15.00'	23.72'	21.37'	N 44°10'26" E	80°32'09"	15.15'
C18	100.00'	25.50'	25.43'	N 02°25'23" W	14°36'32"	12.82'
C19	136.00'	34.88'	34.98'	S 05°25'23" E	14°36'32"	17.43'
C20	25.00'	38.96'	35.14'	N 45°45'53" W	89°17'32"	24.69'



**CERTIFICATION**  
I, JACK H. NINNEMAN A PROFESSIONAL LAND SURVEYOR REGISTERED IN THE STATE OF NEVADA, DO HEREBY CERTIFY THAT THE MONUMENTS HAVE BEEN SET AND THE TIE DISTANCES ESTABLISHED AS SHOWN HEREON. THIS WAS COMPLETED ON 8-7-91

JACK H. NINNEMAN DATE: 8/7/91



OFFICIAL MONUMENT TIE MAP  
**JONATHAN'S GLEN III**  
(A RESIDENTIAL SUBDIVISION)  
SITUATED IN THE NORTHWEST 1/4 OF SECTION 28, TOWNSHIP 20 SOUTH, RANGE 80 EAST, M.D.M., LAS VEGAS, CLARK COUNTY, NEVADA

**ROBNSON/DALTON CONSULTING, INC.**  
THE RANCHO OFFICE CENTER  
2855 RAYBURN DRIVE, SUITE 3  
LAS VEGAS, NEVADA 89121  
TELEPHONE: 702-496-8763