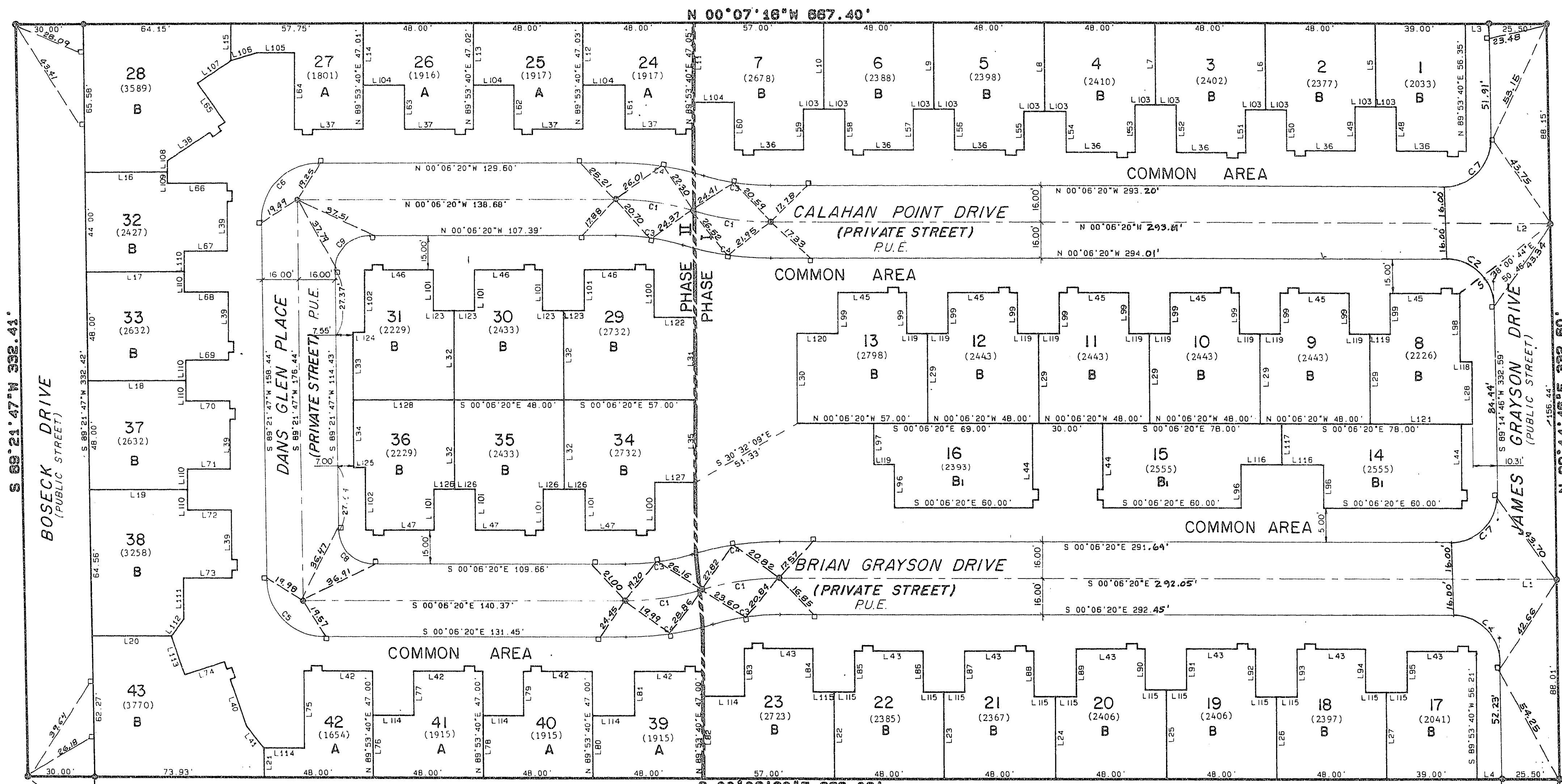


8-6-38

JONATHAN'S GLEN II (A RESIDENTIAL SUBDIVISION)

UNSUBDIVIDED



LEGEND

- TYPE III MONUMENT TO BE SET
- MONUMENT FOUND - AS DESCRIBED
- 25 LOT NUMBER
- (1950) AREA IN SQUARE FEET
- B LOT TYPE DESIGNATION (SEE DIMENSIONS BELOW)

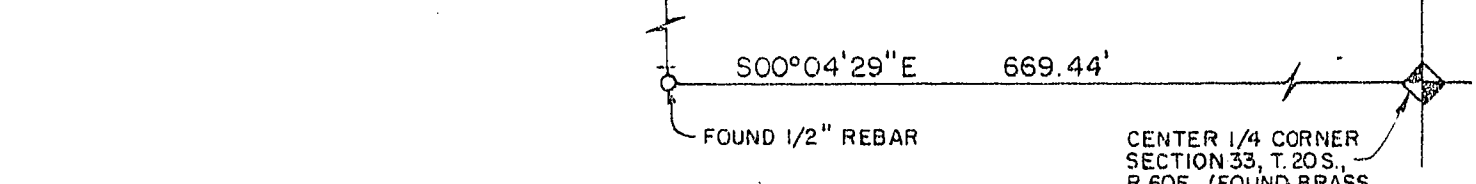
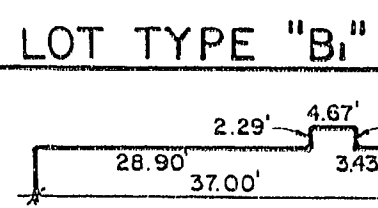
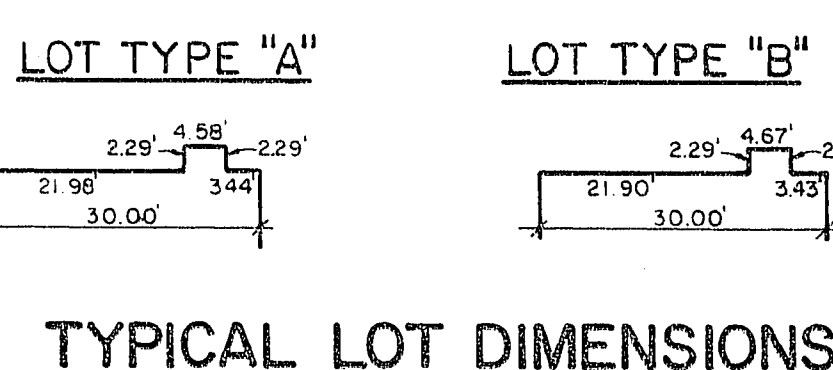
TOTAL AREA = 5.097 ACRES
TOTAL NUMBER OF LOTS = 43

COUNTY RECORDER'S NOTE
ANY SUBSEQUENT CHANGES TO THIS MAP SHOULD BE EXAMINED AND MAY BE DETERMINED BY REFERENCE TO THE COUNTY RECORDER'S CUMULATIVE MAP INDEX. (PER NRS 278.5695)

JONATHAN'S GLEN
BOOK 42, PAGE 51

LINE	BEARING	DISTANCE	LINE	BEARING	DISTANCE	LINE	BEARING	DISTANCE	LINE	BEARING	DISTANCE
1	S 00°06'20"E	49.50	33	N 89°53'40"E	29.71	65	N 55°31'26"E	21.00	97	S 89°53'40"W	18.00
2	N 00°06'20"W	49.50	34	N 89°53'40"E	29.71	66	N 00°06'20"W	25.84	98	S 89°53'40"W	30.00
3	S 00°07'15"E	10.00	35	S 89°53'40"W	36.21	67	S 00°06'20"E	18.50	99	N 89°53'40"E	18.00
4	N 00°06'20"W	10.85	36	S 00°06'20"E	21.90	68	N 00°06'20"W	18.95	100	S 89°53'40"W	21.00
5	N 89°53'40"E	36.84	37	S 00°06'20"E	21.98	69	S 00°06'20"E	18.50	101	N 89°53'40"E	18.00
6	N 89°53'40"E	38.33	38	S 34°28'34"E	21.90	70	N 00°06'20"W	18.95	102	N 89°53'40"E	27.50
7	N 89°53'40"E	36.31	39	N 89°53'40"E	21.90	71	S 00°06'20"E	18.50	103	S 00°06'20"E	9.00
8	N 89°53'40"E	39.30	40	N 71°22'48"E	21.90	72	N 00°06'20"W	18.95	104	S 00°06'20"E	18.00
9	N 89°53'40"E	38.28	41	N 52°07'05"E	11.98	73	S 00°06'20"E	21.00	105	S 00°06'20"E	16.58
10	N 89°53'40"E	38.28	42	N 00°06'20"W	21.90	74	N 18°31'12"W	18.00	106	N 18°31'12"W	17.58
11	S 89°53'40"W	35.26	43	N 00°06'20"W	21.90	75	S 89°53'40"W	34.00	107	S 34°28'34"E	17.58
12	S 89°53'40"W	27.53	44	N 89°53'40"E	28.90	76	S 89°53'40"W	27.50	108	N 89°53'40"E	5.00
13	S 89°53'40"W	27.52	45	S 00°06'20"E	21.90	77	S 89°53'40"W	19.50	109	N 89°53'40"E	5.00
14	S 89°53'40"W	27.51	46	S 00°06'20"E	21.90	78	S 89°53'40"W	27.50	110	N 89°53'40"E	9.00
15	N 89°53'40"E	16.45	47	N 00°06'20"W	21.90	79	S 89°53'40"W	19.50	111	N 89°53'40"E	18.00
16	N 00°06'20"W	36.19	48	S 89°53'40"W	19.50	80	S 89°53'40"W	27.50	112	S 54°32'24"E	9.29
17	N 00°06'20"W	42.92	49	N 89°53'40"E	19.50	81	S 89°53'40"W	19.50	113	N 71°22'48"E	18.00
18	N 00°06'20"W	42.92	50	S 89°53'40"W	18.00	82	S 89°53'40"W	18.00	114	N 00°06'20"W	18.00
19	N 00°06'20"W	42.92	51	N 89°53'40"E	19.00	83	S 89°53'40"W	21.00	115	N 00°06'20"W	9.00
20	N 00°06'20"W	34.86	52	S 89°53'40"W	21.00	84	N 89°53'40"E	19.00	116	S 00°06'20"E	18.00
21	S 89°53'40"W	13.00	53	N 89°53'40"E	21.00	85	S 89°53'40"W	18.00	117	S 89°53'40"W	18.00
22	S 89°53'40"W	38.21	54	S 89°53'40"W	18.00	86	N 89°53'40"E	18.00	118	N 00°06'20"E	5.00
23	S 89°53'40"W	38.21	55	N 89°53'40"E	17.00	87	S 89°53'40"W	18.00	119	S 00°06'20"E	9.00
24	S 89°53'40"W	38.21	56	S 89°53'40"W	18.00	88	N 89°53'40"E	20.00	120	S 00°06'20"E	18.00
25	S 89°53'40"W	38.21	57	N 89°53'40"E	18.00	89	S 89°53'40"W	18.00	121	N 00°06'20"W	44.00
26	S 89°53'40"W	36.21	58	S 89°53'40"W	18.00	90	N 89°53'40"E	18.00	122	S 00°06'20"E	18.00
27	S 89°53'40"W	38.21	59	N 89°53'40"E	18.00	91	S 89°53'40"W	18.00	123	S 00°06'20"E	9.00
28	S 89°53'40"W	27.43	60	S 89°53'40"W	21.00	92	N 89°53'40"E	21.00	124	S 00°06'20"E	5.00
29	N 89°53'40"E	38.43	61	S 89°53'40"W	19.50	93	S 89°53'40"W	21.00	125	N 00°06'20"W	21.00
30	N 89°53'40"E	38.43	62	S 89°53'40"W	19.50	94	N 89°53'40"E	19.00	126	N 00°06'20"W	9.00
31	S 89°53'40"W	36.21	63	S 89°53'40"W	19.50	95	S 89°53'40"W	18.00	127	N 00°06'20"W	18.00
32	N 89°53'40"E	38.21	64	S 89°53'40"W	34.00	96	S 89°53'40"W	19.00	128	S 00°06'20"E	44.00

LINE	BEARING	DISTANCE	LINE	BEARING	DISTANCE	LINE	BEARING	DISTANCE	LINE	BEARING	DISTANCE
1	16°53'01"	116.00	34	18	17.22	34.06					
2	89°21'06"	20.00	31	19	19.78	24.12					
3	16°53'01"	100.00	29	47	14.84	25.36					
4	16°53'01"	132.00	38	90	19.59	38.76					
5	89°28'07"	25.00	39	34	24.77	35.19					
6	90°31'53"	25.00	39	50	24.77	35.19					
7	99°20'04"	20.00	21	49	24.23	28.44					
8	89°28'07"	15.00	23	42	14.86	21.11					
9	90°31'53"	15.00	23	70	15.14	21.31					



SCALE: 1" = 30'

**OFFICIAL PLAT OF
JONATHAN'S GLEN II
(A RESIDENTIAL SUBDIVISION)**

Situated in the Southwest 1/4 of Section 33,
Township 20 South, Range 60 East, M.D.M.,
Las Vegas, Clark County, Nevada

SHEET 2 of 2

ROBINSON/KELLER ENGINEERING, INC.
ENGINEERING - SURVEYING - PLANNING

3838 Raymert Drive, Suite 3
Las Vegas, Nevada 89121 (702) 456-2730

058-4040-II