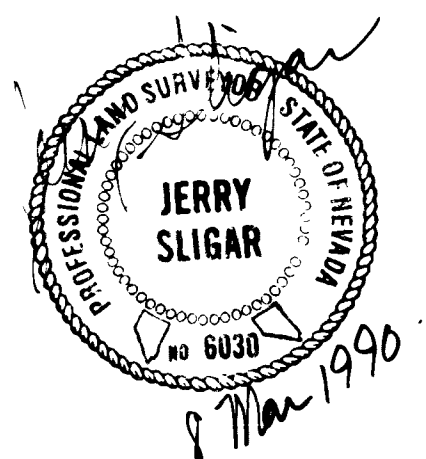


MONUMENTATION MAP FOR LA JOLLA CLASSICS

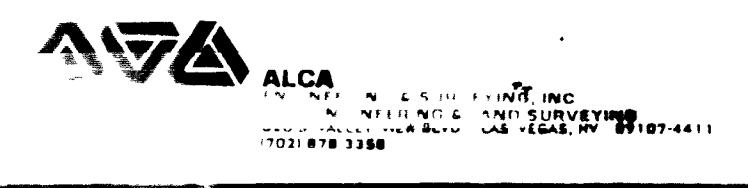
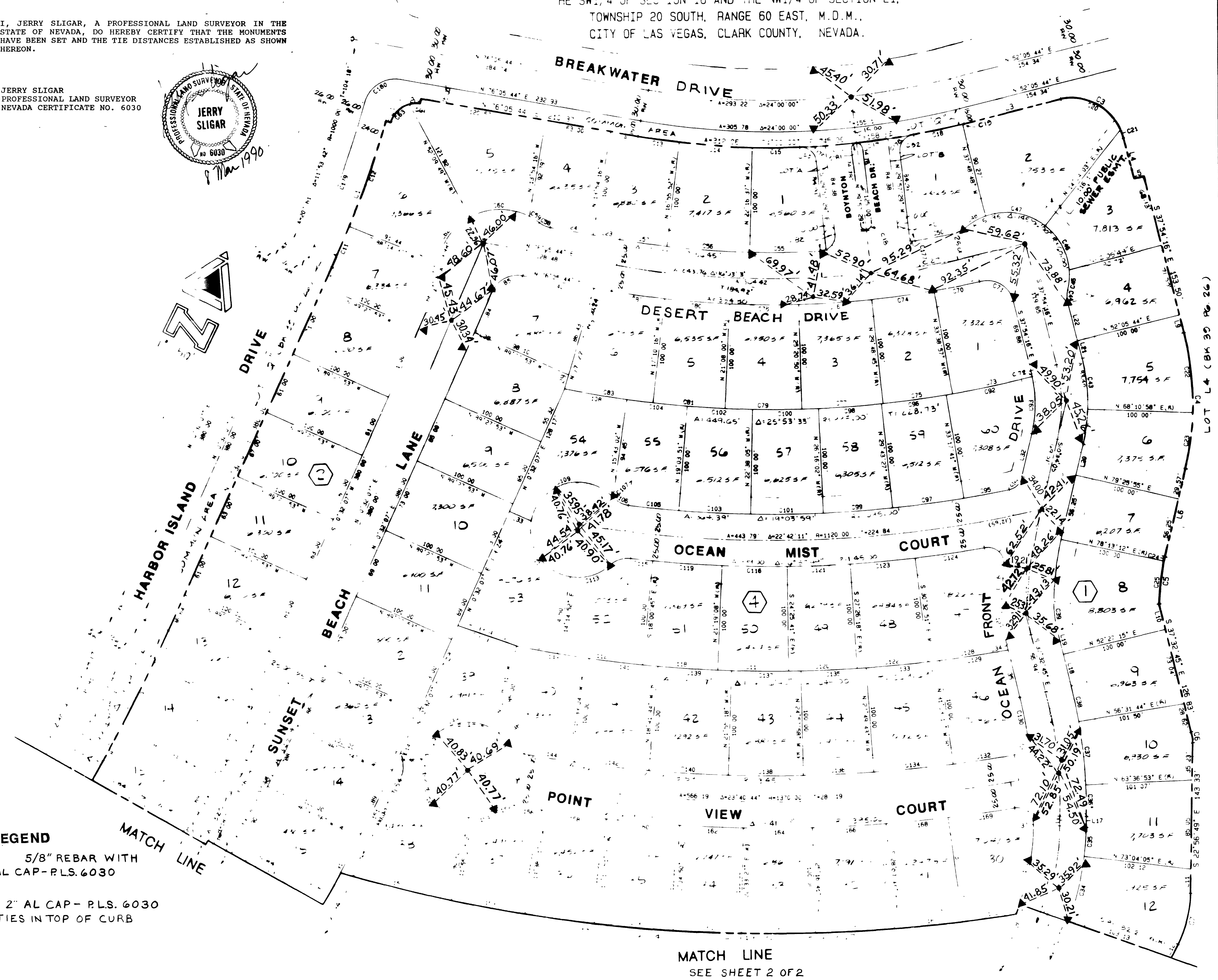
A PORTION OF
THE SW1/4 OF SECTION 16 AND THE NW1/4 OF SECTION 21,
TOWNSHIP 20 SOUTH, RANGE 60 EAST, M.D.M.,
CITY OF LAS VEGAS, CLARK COUNTY, NEVADA.

I, JERRY SLIGAR, A PROFESSIONAL LAND SURVEOR IN THE STATE OF NEVADA, DO HEREBY CERTIFY THAT THE MONUMENTS HAVE BEEN SET AND THE TIE DISTANCES ESTABLISHED AS SHOWN HEREON.

JERRY SLIGAR
PROFESSIONAL LAND SURVEYOR
NEVADA CERTIFICATE NO. 6030



- LEGEND**
- 5/8" REBAR WITH AL CAP- PLS. 6030
 - ▲ 2" AL CAP- PLS. 6030 TIES IN TOP OF CURB



LA JOLLA CLASSICS

