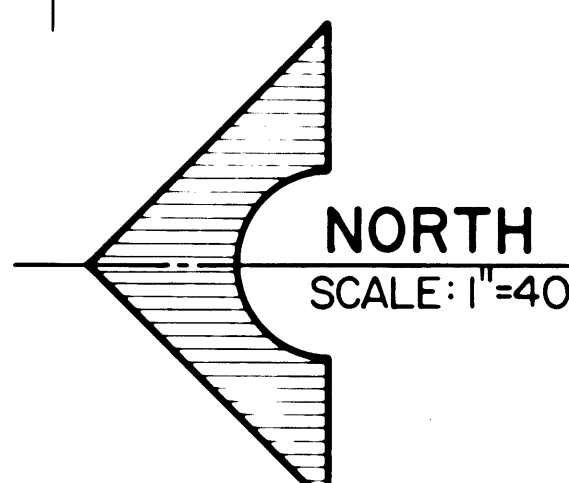
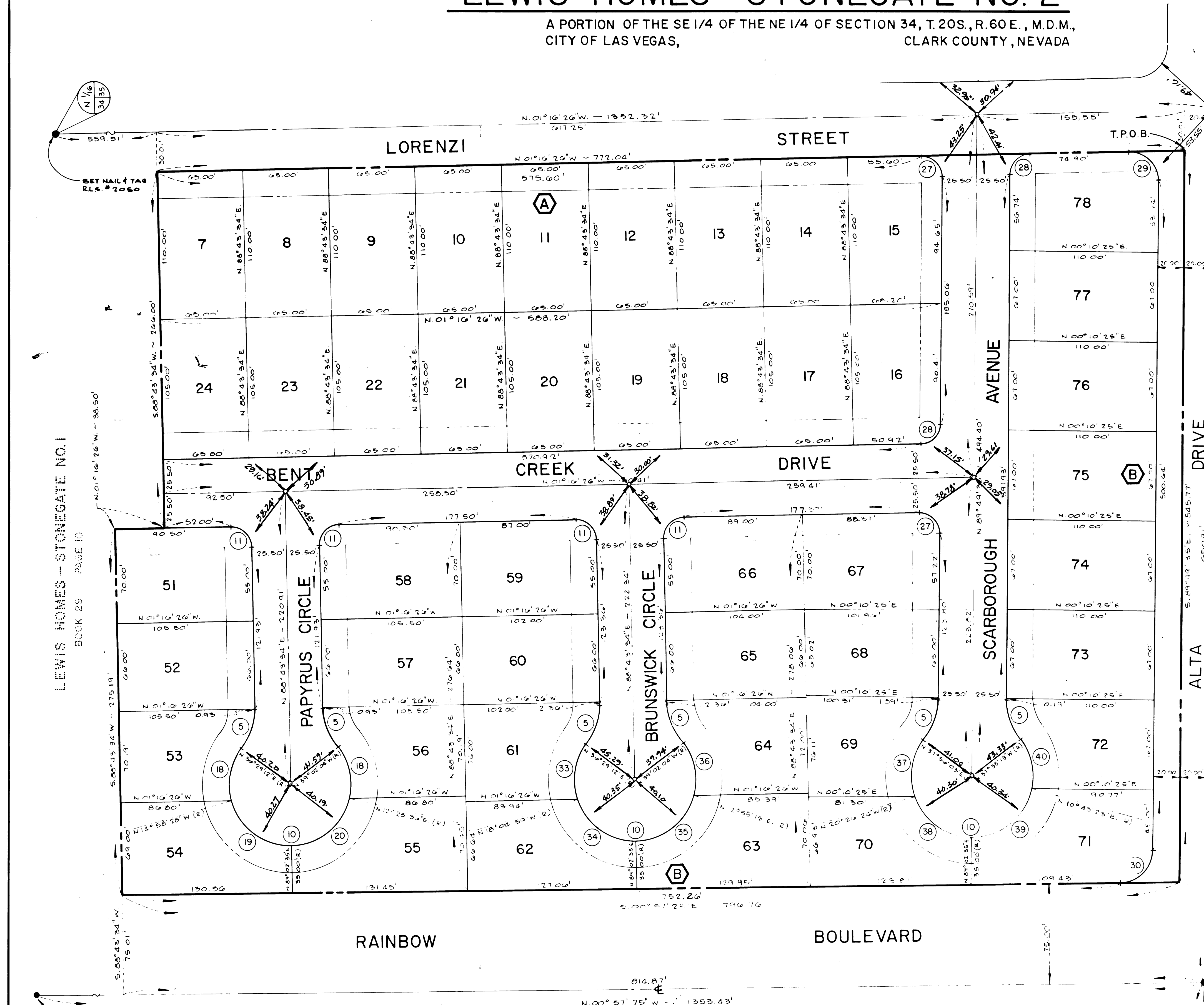


LEWIS HOMES - STONEGATE NO. 2

A PORTION OF THE SE 1/4 OF THE NE 1/4 OF SECTION 34, T.20S., R.60E., M.D.M.,
CITY OF LAS VEGAS, CLARK COUNTY, NEVADA



- SET 5/8" REBAR & ALUM. CAP RLS 2050
- SET NAIL & BRASS TAG RLS 2050 WITH BRASS CAP REFERENCE TIES IN TOP OF CURB

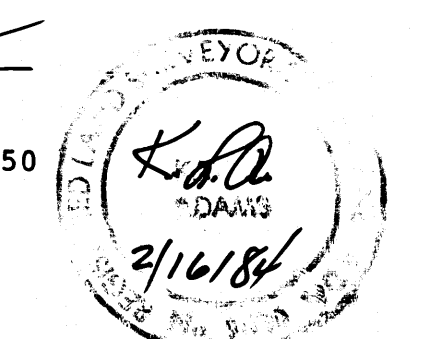
CURVE DATA

NO	Δ	R	L	T
5	37°45'36"	50.00'	32.95'	17.10'
10	255°31'16"	45.50'	202.92'	00
11	90°00'00"	15.00'	23.56'	15.00'
18	51°27'40"	45.50'	40.87'	21.93'
19	75°58'57"	45.50'	60.34'	35.54'
20	76°36'59"	45.50'	60.84'	35.94'
27	91°26'51"	15.00'	23.94'	15.38'
28	88°33'09"	15.00'	23.18'	14.63'
29	91°26'51"	20.00'	31.92'	20.51'
30	88°52'10"	25.00'	38.78'	24.51'
33	54°34'11"	45.50'	43.34'	23.47'
34	72°52'26"	45.50'	57.87'	33.59'
35	76°07'19"	45.50'	60.45'	35.63'
36	51°57'20"	45.50'	41.26'	22.17'
37	58°22'27"	45.50'	46.36'	25.42'
38	70°31'01"	45.50'	56.00'	32.17'
39	78°19'12"	45.50'	62.20'	37.06'
40	48°18'36"	45.50'	38.36'	20.41'

MONUMENT TIE MAP

SURVEYOR'S CERTIFICATE
THIS IS TO CERTIFY THAT THE MONUMENTS HAVE BEEN SET AND TIES ESTABLISHED AS SHOWN HEREON.

Kay Adams
KAY L. ADAMS
REGISTERED LAND SURVEYOR
NEVADA CERTIFICATE NO. 2050



NOTE:
DIRECT VEHICULAR ACCESS TO RAINBOW BLVD. FROM LOTS 54, 55, 62, 63, 70 & 71 - BLOCK "B" AND TO ALTA DRIVE FROM LOTS 71-78, BLOCK "B" IS PROHIBITED

FIND HUB & TAG 0.08' EAST

SET 5/8" REBAR & ALUM. CAP (FIND NAIL & TAG 0.10 N. & 0.40 W.)

FIND CARRIAGE BOLT

56-51