

LOS PRADOS - PHASE 2 - UNIT 1B

A PORTION OF SECTION 36, T. 19 S., R. 60 E., M.D.M.,
CITY OF LAS VEGAS, CLARK COUNTY, NEVADA.

MONUMENT TIE MAP

I, STEPHEN P. GURLIDES, A PROFESSIONAL LAND SURVEYOR IN THE STATE OF NEVADA, DO HEREBY CERTIFY THAT THE MONUMENTS HAVE BEEN SET AND THE TIE DISTANCE ESTABLISHED AS SHOWN HEREON. THIS SURVEY WAS COMPLETED ON

8/4/94
STEPHEN P. GURLIDES
NEVADA CERTIFICATION NO. 9105

CURVE TABLE

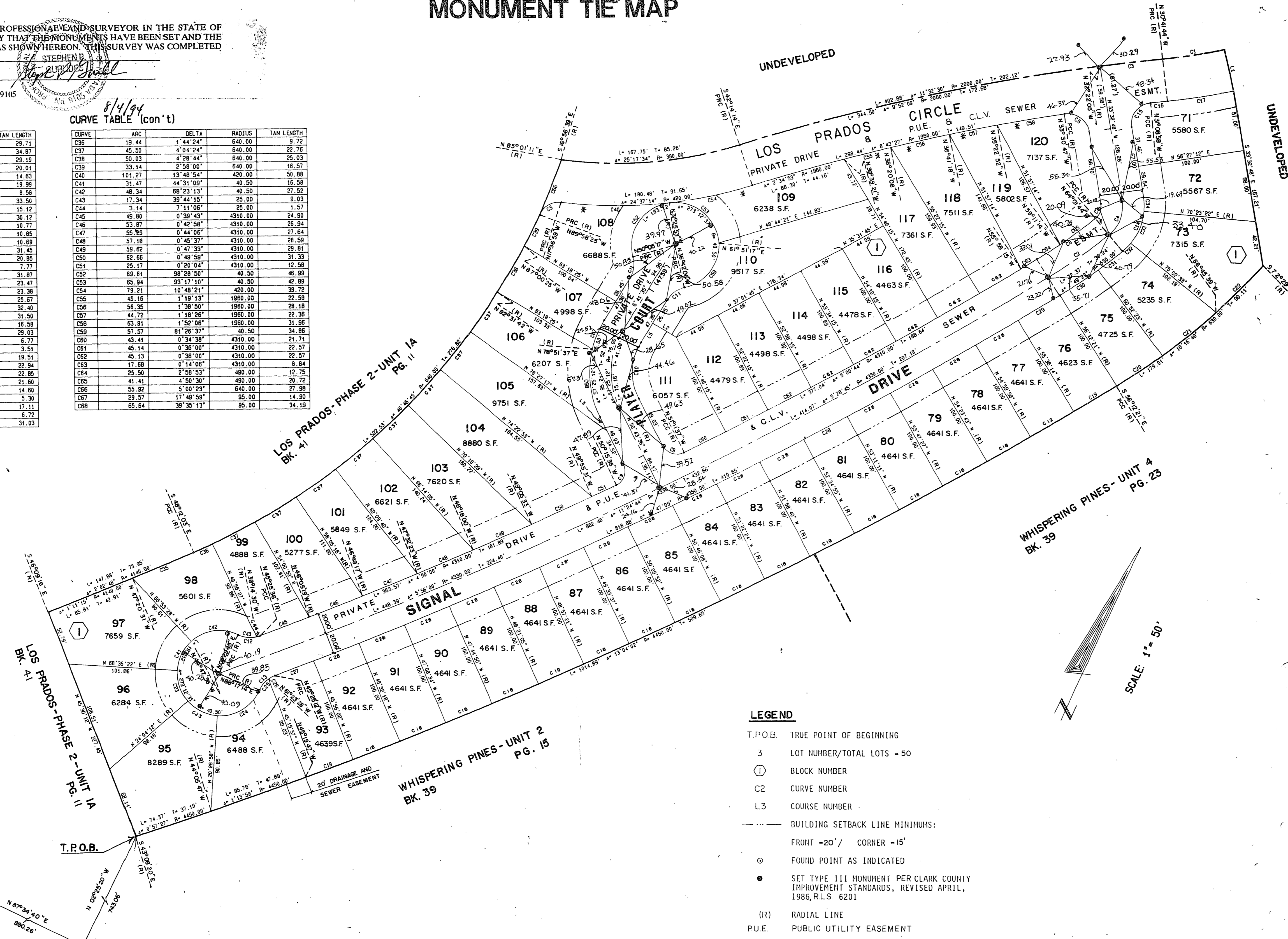
CURVE	ARC	DELTA	RADIUS	TAN LENGTH
C1	59.36	6°11'02"	550.00	29.71
C2	69.63	7°49'23"	510.00	34.87
C3	59.36	1°40'21"	2000.00	29.19
C4	36.36	59°31'03"	35.00	20.01
C5	25.26	72°21'26"	20.00	14.63
C6	31.40	89°57'59"	20.00	19.99
C7	15.58	59°31'03"	15.00	8.58
C8	66.80	7°40'22"	480.00	33.50
C9	23.68	90°28'01"	15.00	15.12
C10	55.12	57°25'12"	55.00	30.12
C11	20.34	46°36'18"	25.00	10.71
C12	20.47	46°55'21"	25.00	10.85
C13	20.20	46°17'33"	25.00	10.69
C14	57.13	59°31'03"	55.00	31.45
C15	32.25	92°23'49"	20.00	20.85
C16	15.53	0°27'15"	1950.00	7.71
C17	63.68	6°11'02"	500.00	31.87
C18	46.94	0°36'16"	4450.00	23.47
C19	46.75	0°36'07"	4450.00	23.38
C20	51.32	4°40'02"	630.00	23.67
C21	64.74	5°53'16"	630.00	32.40
C22	62.95	5°43'31"	630.00	31.50
C23	31.47	44°31'10"	40.50	16.58
C24	50.37	71°15'48"	40.50	28.03
C25	13.23	30°19'18"	25.00	6.77
C26	6.97	15°58'16"	25.00	3.51
C27	39.01	0°30'50"	4350.00	19.51
C28	45.89	0°38'16"	4350.00	22.34
C29	45.79	0°38'07"	4350.00	22.25
C30	43.17	4°40'02"	530.00	21.60
C31	29.19	3°09'21"	530.00	14.60
C32	10.57	11°00'49"	35.00	5.30
C33	33.18	34°34'05"	55.00	17.11
C34	13.38	13°56'10"	55.00	6.72
C35	62.07	0°51'32"	4140.00	31.03

CURVE TABLE (con't)

CURVE	ARC	DELTA	RADIUS	TAN LENGTH
C36	19.44	1°44'24"	640.00	9.72
C37	45.50	4°04'24"	640.00	22.76
C38	50.03	4°28'44"	640.00	25.03
C39	33.14	2°58'00"	640.00	16.57
C40	101.27	13°48'54"	420.00	50.88
C41	31.47	44°31'09"	40.50	16.58
C42	48.34	89°23'13"	40.50	27.82
C43	17.34	39°44'15"	25.00	9.03
C44	3.14	7°11'08"	25.00	1.57
C45	49.80	0°38'43"	4310.00	24.90
C46	53.87	0°42'58"	4310.00	26.94
C47	55.99	0°44'06"	4310.00	27.64
C48	57.18	0°45'37"	4310.00	28.59
C49	59.62	0°47'33"	4310.00	29.81
C50	62.66	0°49'58"	4310.00	31.33
C51	25.17	0°20'04"	4310.00	12.58
C52	69.81	98°28'50"	40.50	46.99
C53	65.94	93°17'10"	40.50	42.89
C54	79.21	10°48'21"	420.00	38.72
C55	45.16	1°19'13"	1950.00	22.58
C56	56.35	1°38'50"	1950.00	28.18
C57	44.72	1°18'26"	1950.00	22.36
C58	63.91	0°50'00"	1950.00	31.96
C59	67.57	81°29'37"	40.50	34.86
C60	43.41	0°34'38"	4310.00	21.71
C61	45.14	0°38'00"	4310.00	22.57
C62	45.13	0°38'00"	4310.00	22.57
C63	17.88	0°14'06"	4310.00	8.84
C64	25.50	2°50'53"	490.00	12.75
C65	41.41	4°50'30"	490.00	20.72
C66	55.92	5°00'23"	640.00	27.99
C67	29.57	17°48'56"	95.00	14.50
C68	65.64	39°35'13"	95.00	34.19

COURSE TABLE

LINE	BEARING	DISTANCE
L1	S 36°52'46" E (R)	40.00
L2	N 83°18'25" W	25.14
L3	N 50°43'36" W	14.51
L4	N 6°41'35" E	20.91
L5	N 6°41'35" E	21.11



LEGEND

- T.P.O.B. TRUE POINT OF BEGINNING
- 3 LOT NUMBER/TOTAL LOTS = 50
- Ⓛ BLOCK NUMBER
- C2 CURVE NUMBER
- L3 COURSE NUMBER
- BUILDING SETBACK LINE MINIMUMS:
FRONT = 20' / CORNER = 15'
- ⊙ FOUND POINT AS INDICATED
- SET TYPE III MONUMENT PER CLARK COUNTY IMPROVEMENT STANDARDS, REVISED APRIL, 1986, R.L.S. 6201
- (R) RADIAL LINE
- P.U.E. PUBLIC UTILITY EASEMENT
- TIE-BRASS CAP IN TOP OF CURB

*** NOTES**

1. EMERGENCY ACCESS ONLY BETWEEN PLAYER COURT & LOS PRADOS CIRCLE.
2. DIRECT VEHICULAR ACCESS FROM SIDE/REAR OF LOTS PROHIBITED.

W.O. # 3188LP2-1B
SHEET 2 OF 2

ACT	DATE	BY	ACTION

5-6-107 BK. 43, PG. 0001
MON TIE MAP 058-2037-2-1B