

LOS PRADOS - PHASE 2 - UNIT 1A
 A PORTION OF SECTION 36, T. 19 S., R. 60 E., M.D.M., CITY OF LAS VEGAS, CLARK COUNTY, NEVADA.

MONUMENT TIES MAP

LEGEND

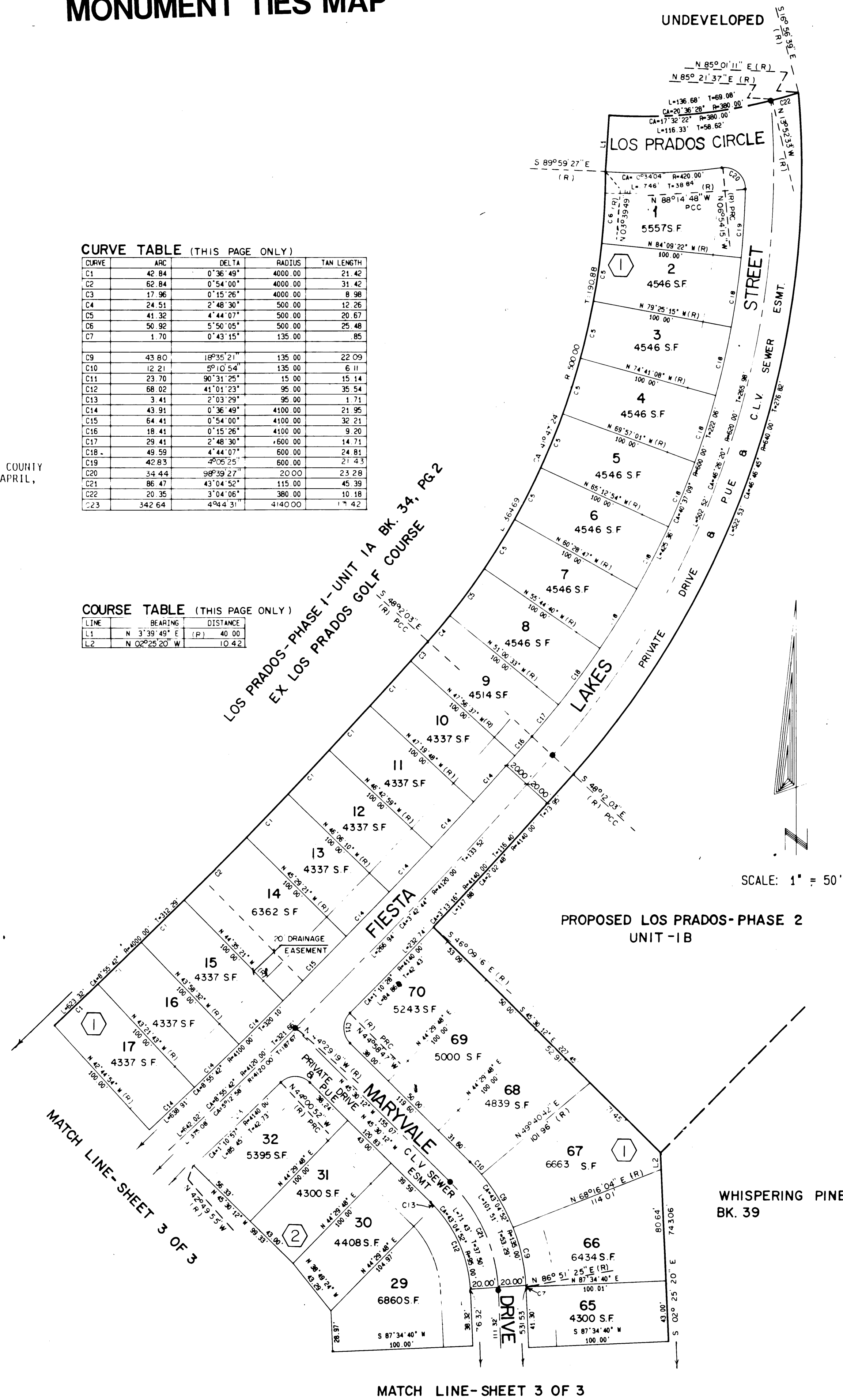
- POB TRUE POINT OF BEGINNING
- 3 LOT NUMBER/TOTAL LOTS = 120
- Ⓛ BLOCK NUMBER
- C2 CURVE NUMBER
- L3 COURSE NUMBER
- BUILDING SETBACK LINE MINIMUMS:
 FRONT = 20' CORNER = 15'
- ⊙ FOUND POINT AS INDICATED
- SET TYPE III MONUMENT FOR CLARK COUNTY IMPROVEMENT STANDARDS, REVISED APRIL, 1986 R.L.S. 6201
- (R) RADIAL LINE
- PUE PUBLIC UTILITY EASEMENT

CURVE TABLE (THIS PAGE ONLY)

CURVE	ARC	DELTA	RADIUS	TAN LENGTH
C1	42.84	0°36'49"	4000.00	21.42
C2	62.84	0°54'00"	4000.00	31.42
C3	17.96	0°15'26"	4000.00	9.98
C4	24.51	2°48'30"	500.00	12.26
C5	41.32	4°44'07"	500.00	20.67
C6	50.92	5°50'05"	500.00	25.48
C7	1.70	0°43'15"	135.00	.85
C9	43.80	10°35'51"	135.00	22.09
C10	12.21	5°10'54"	135.00	6.11
C11	23.70	9°31'25"	15.00	15.14
C12	68.02	41°01'23"	95.00	35.54
C13	3.41	2°03'29"	95.00	1.71
C14	43.91	0°36'49"	4100.00	21.95
C15	64.41	0°54'00"	4100.00	32.21
C16	18.41	0°15'26"	4100.00	9.20
C17	29.41	2°48'30"	4100.00	14.71
C18	49.59	4°44'07"	500.00	24.81
C19	42.83	5°50'05"	500.00	21.43
C20	34.44	9°31'25"	200.00	23.28
C21	86.47	43°04'52"	115.00	45.39
C22	20.35	3°04'06"	380.00	10.18
C23	342.64	4°44'31"	4140.00	17.42

COURSE TABLE (THIS PAGE ONLY)

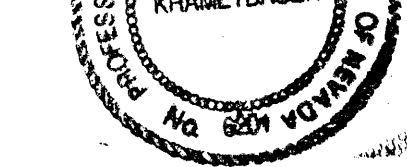
LINE	BEARING	DISTANCE
L1	N 3°39'49" E	40.00
L2	N 02°25'20" W	10.42



SCALE: 1" = 50'

I, GENE D. KRAMETBAUER, A PROFESSIONAL LAND SURVEYOR IN THE STATE OF NEVADA, DO HEREBY CERTIFY THAT THE MONUMENTS HAVE BEEN SET AND THE TIE DISTANCE ESTABLISHED AS SHOWN HEREON. THIS SURVEY WAS COMPLETED ON 4/20/92

GENE D. KRAMETBAUER, P.L.S.
 NEVADA CERTIFICATION NO.: 6201



4/20/92

WHISPERING PINES-UNIT 2
 BK. 39 PG. 15

W.O. 3188-LP2-1A
 SHEET 2 OF 3